

ddpai DDPAI-Z40-S

DDPAI Z40 Single Front Dash Cam User Manual

Model: DDPAI-Z40-S

INTRODUCTION

The DDPAI Z40 Single Front Dash Cam is a high-performance car camera designed to record your journeys in clear 1944P resolution. Equipped with advanced features such as a Sony IMX335 sensor for superior night vision, D²save dual emergency storage, built-in Wi-Fi for app connectivity, and a super capacitor for enhanced durability, this dash cam provides reliable evidence and peace of mind on the road. This manual provides detailed instructions for setup, operation, maintenance, and troubleshooting to ensure optimal performance of your device.



Image: DDPAI Z40 Single Front Dash Cam with its companion mobile application interface.

What's in the Box

Verify that all components are present in the package before proceeding with installation.

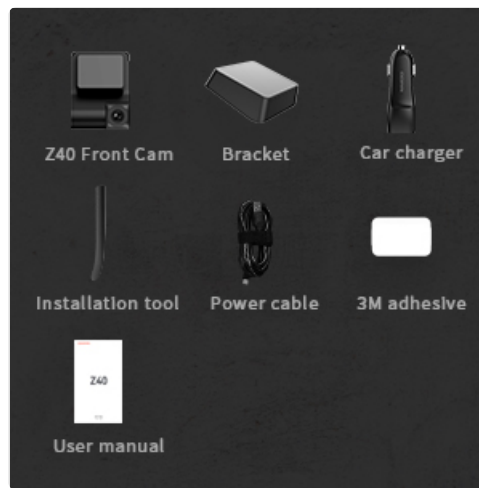


Image: All components included in the DDPAL Z40 Dash Cam package.

- DDPAL Z40 Front Cam
- Bracket
- Car Charger
- Installation Tool
- Power Cable
- 3M Adhesive
- User Manual

SETUP

1. Micro SD Card Installation

A Class 10, U3 Speed Micro-SD Card (up to 128GB max) is required for high-resolution video recording. The SD card is not included. Please format the micro SD card before first use. Avoid using "SanDisk Ultra" or "Generic Class 10 for HD Video" cards from third-party sellers.

2. Mounting the Dash Cam

Clean the windshield area where the dash cam will be mounted. Apply the 3M adhesive to the bracket and firmly attach it to the desired location on your windshield. Ensure the camera lens has a clear view of the road. The front camera rotates up and down with a limited angle for optimal positioning.

3. Power Connection

Connect the dash cam to your vehicle's power source using the provided car charger (cigarette lighter) or a dedicated hardwire kit (DDPAL dedicated hardwire kit ASIN: B08LL4L87C, sold separately) for 24-hour parking mode functionality. The device uses a Type-C port for power input (DC12V/24V, 2A).

4. Wi-Fi and App Connection

The DDPAL Z40 has built-in Wi-Fi for easy connection to the "DDPAL" app on your smartphone. Download the "DDPAL" app from your app store. The initial Wi-Fi password is **1234567890**. For iOS users, disable cellular connection in your phone network settings for seamless preview playback. The available Wi-Fi connection distance is 9-15ft.

5. Setting Date and Time

Before setting the date and time, ensure you set the [NETWORK] and [Timezone] settings within the DDPAL app. The date and time will then synchronize automatically when connected to the app. If not connected to the app, the date and time may not update, and footage might not be saved correctly.

OPERATING INSTRUCTIONS

Automatic Recording

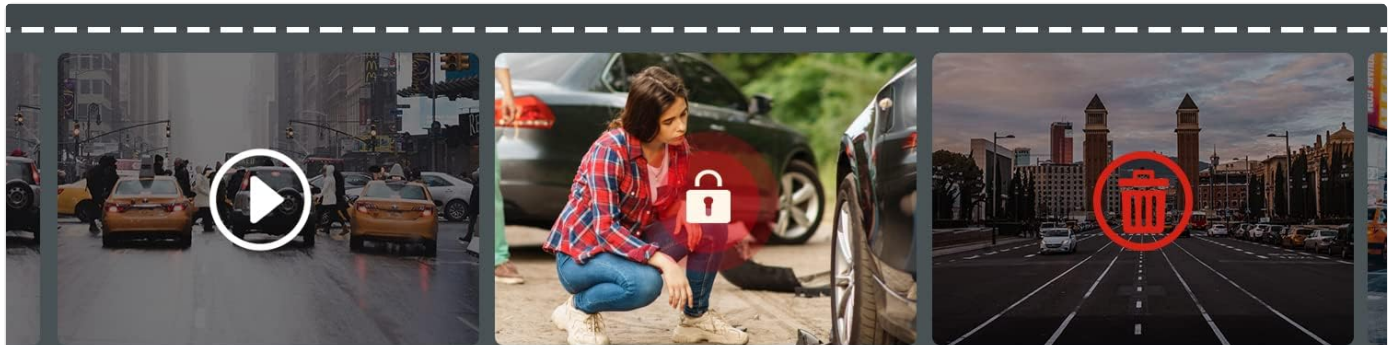
Once powered on, the dash cam will automatically begin loop recording. Oldest files will be overwritten automatically unless they are locked by the G-sensor or manually saved.

G-Sensor (Collision Detection)

The built-in G-sensor detects sudden shocks or collisions. When triggered, the camera automatically locks the current video segment, preventing it from being overwritten. This ensures critical footage is preserved as evidence.

24-Hour Parking Monitor

To enable 24-hour parking mode, the DDPAI dedicated hardwire kit (ASIN: B08LL4L87C) is required. This feature allows the dash cam to monitor your vehicle's surroundings even when parked, automatically recording incidents.



Essential Witness for Accidents

24 Packing Monitor

Monitor the surrounding environment, protect your car (MINI5/Z40 hardware kit ASIN:B08LL4L87C)



G-sensor

Locked the video when collision occurred.

Loop recording

Wipe the unlocked oldest recordings out and prevent files from being overwritten.



Image: Essential features for accident recording: 24H Parking Monitor, G-Sensor, and Loop Recording.

Using the DDPAI App

Connect your smartphone to the dash cam's Wi-Fi. The "DDPAI" app allows you to:

- **Live Preview:** View real-time footage from the dash cam.
- **Video Playback:** Review recorded videos directly on your smartphone.
- **Download Footage:** Download videos to your phone at a faster speed than SD card transfer.
- **One-Click Share:** Easily share your travel footage to social media.
- **Firmware Upgrade:** Receive free firmware upgrades for continuous improvement.
- **SR Version Display:** Download cool SR Version display through video download on the App to keep your safety and reduce the incident to keep the right distance between other cars.

Easily Download & Preview on Smartphone

Easily playback and preview the video & **One-Click share** to your social app anytime and anywhere by smartphone.

No need to remove the SD card to download it on the computer.



Image: Seamless video download and preview on your smartphone via the DDPAI app.

Built-in GPS & Virtual and Reality

Built-in GPS recording with two user-friendly speed unit in **M/H** or **KM/H** for every driver. Download cool **SR Version** display through **Video download on App** to keep your safety and reduce the incident to **keep the right distance** between other cars.



Image: Built-in GPS recording with virtual and reality display, showing speed and distance.

KEY FEATURES

3K (1944P) Resolution & Super Night Vision

The dash cam records in 3K (2560×1944P @30fps) for the front camera, providing clear and detailed footage. It features a high-sensitivity Sony IMX335 STARVIS CMOS Sensor, which significantly enhances night vision capabilities, allowing for clear recordings even in low-light conditions. Unique Corrected Image Technology reduces distortion along the edges of the video.

Super Night Vision With Sony Sensor

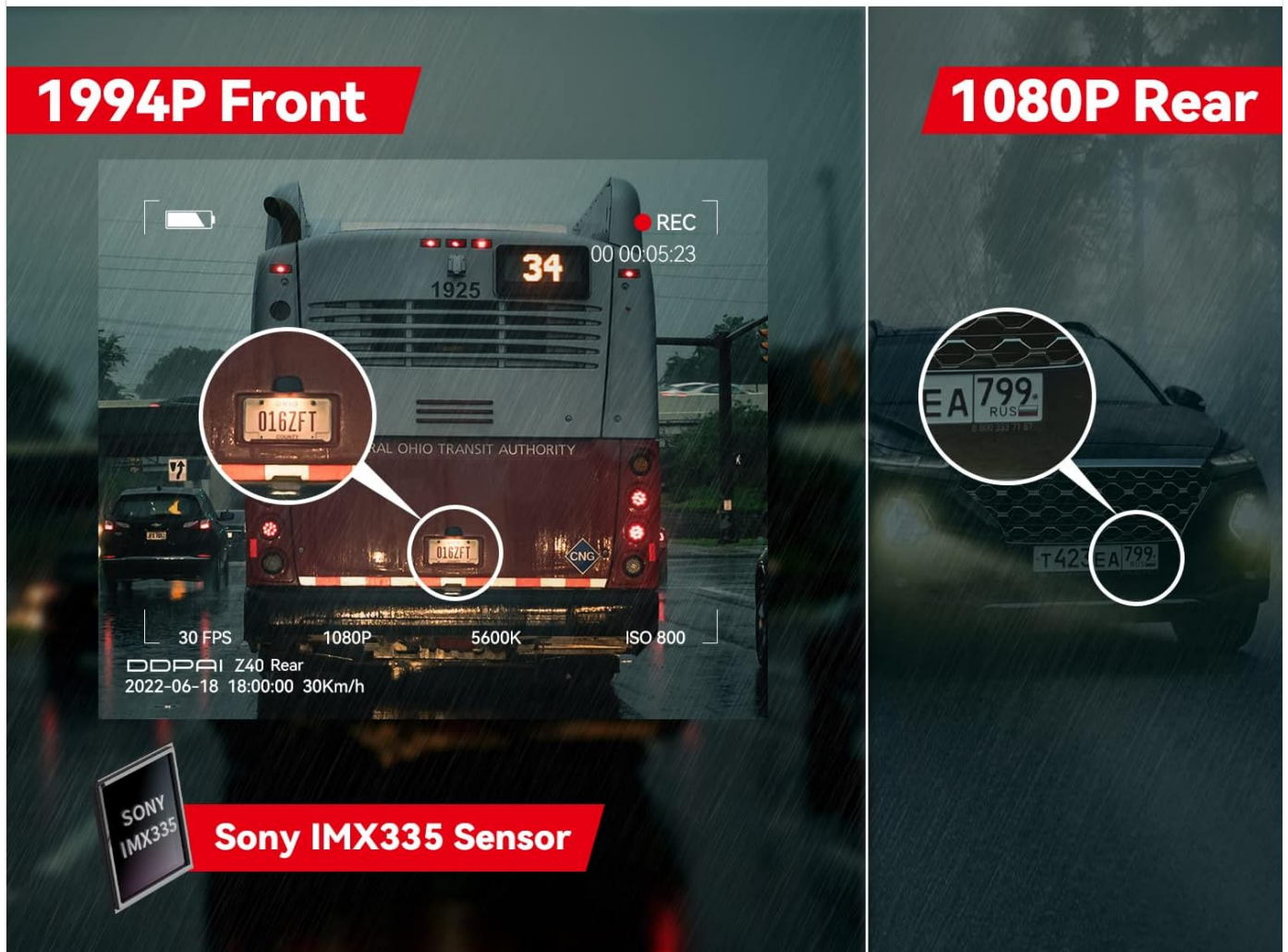


Image: Super Night Vision with Sony Sensor, demonstrating clear 1944P front recording.

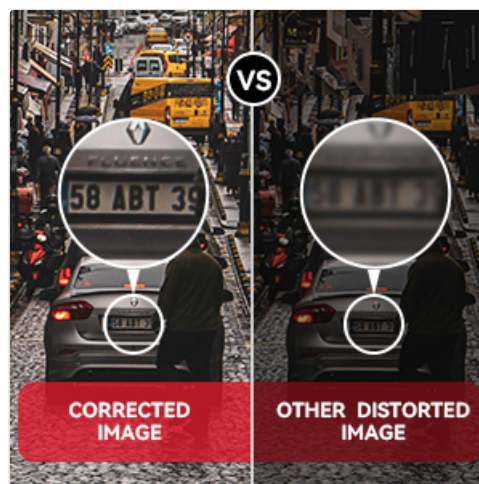


Image: Corrected Image Technology provides clear, undistorted footage compared to other dash cams.

D²save Dual Emergency Storage

This innovative feature provides enhanced evidence protection. In the event of a sudden and significant collision, an additional 10-second loop recording is automatically saved, even if the SD card is abnormal or turned off. This ensures greater stability and data

security, preventing loss of crucial footage.

D²save Dual Emergency Storage Keep Recording Even Car Crash

Built-in **D²save dual storage** to offer the extra
10s loop recordding during sudden huge collision,
no need worry about missing the recording anymore.



Image: D²save Dual Emergency Storage ensures recordings are kept even during a car crash.

Super Capacitor for Extreme Temperatures

The DDPAI Z40 is equipped with a super capacitor instead of traditional lithium batteries. This provides a longer lifespan and allows the dash cam to operate reliably in extreme temperatures, ranging from -4°F to 158°F (-20°C to 70°C), making it suitable for various climates.

Super Performance Capcitor

Built-in Sper Capacitor can adapt to extrame weather under

-4°F-158°F



Safer



Heat Resistant



Longer Lifespan

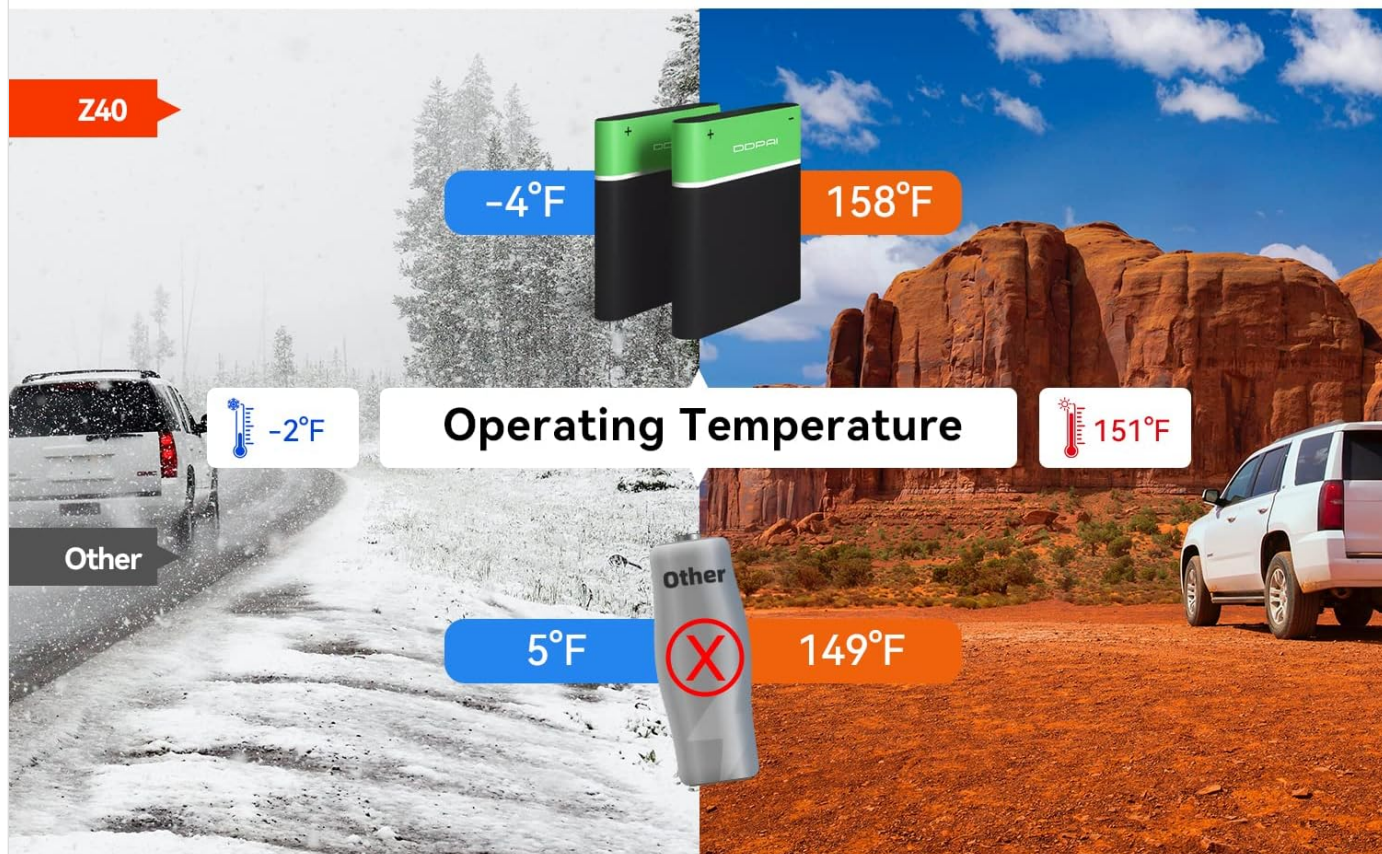


Image: Super Performance Capacitor allows operation in extreme temperatures from -4°F to 158°F.

MAINTENANCE

- **SD Card Care:** Regularly format your micro SD card (e.g., once a month) to maintain optimal performance and prevent data corruption. Back up any important footage before formatting.
- **Cleaning:** Use a soft, dry cloth to clean the dash cam's lens and screen. Avoid using abrasive cleaners or solvents.
- **Firmware Updates:** Keep your dash cam's firmware updated via the DDPAL app to ensure the latest features and bug fixes.
- **Storage:** When not in use for extended periods, store the dash cam in a cool, dry place away from direct sunlight.

TROUBLESHOOTING

Problem	Possible Cause / Solution
Date and time do not update automatically or footage is not saving.	Ensure the dash cam is connected to the DDPAL app via Wi-Fi. Verify that [NETWORK] and [Timezone] settings are correctly configured in the app. For iOS users, temporarily disable cellular data when connecting to the dash cam's Wi-Fi.

Problem	Possible Cause / Solution
App connectivity issues or slow download speeds.	Ensure you are within the 9-15ft Wi-Fi range. Check that the initial password (1234567890) is entered correctly. Try restarting both the dash cam and your smartphone. Ensure the DDPAI app is updated to the latest version.
Dash cam turns off immediately after power is disconnected.	This is normal behavior. The DDPAI Z40 uses a super capacitor, not a battery, for power. It requires continuous power from the vehicle to operate.
Video quality is poor or distorted.	Ensure the lens is clean. Verify that you are using a Class 10, U3 Speed Micro-SD Card. Format the SD card regularly. Check for firmware updates.
Parking mode is not working.	The 24-hour parking mode requires the DDPAI dedicated hardwire kit (ASIN: B08LL4L87C), which is sold separately. Ensure it is correctly installed.
Forgot Wi-Fi password.	Use a pin to insert into the REST hole on the device to restore to default settings. The initial password is 1234567890.

SPECIFICATIONS

Feature	Detail
Product Dimensions	2.76 x 5.51 x 4.33 inches
Item Weight	10.6 ounces
Model Number	DDPAI-Z40-S
Video Capture Resolution	1944p (2560×1944P @30fps Front)
Sensor	Sony IMX335 STARVIS Sensor
Display Technology	LCD (2.4")
Connectivity Technology	Wireless (Built-In WiFi)
Special Features	G-Sensor, Built-In WiFi, App Control, Built-In GPS, D²save Dual Emergency Storage, Super Capacitor
Power Source	Cigarette Lighter or Hard Wire (Type-C Port), DC12V/24V, 2A
Operating Temperature	-4°F to 158°F (-20°C to 70°C)
Max SD Card Support	128GB (Class 10, U3 Speed required)
Mounting Type	Windshield Mount (3M adhesive)

WARRANTY AND SUPPORT

The DDPAI Z40 Dash Cam is backed by a **FULL 18-MONTH WARRANTY**. DDPAI is committed to providing excellent customer service and support.

- **Warranty Period:** 18 Months
- **Return Policy:** 7 Days Return Policy
- **Defects:** Return on Defects
- **Customer Support:** Quick 24/7 live email customer support is available.

For any issues with the app, Wi-Fi, or general inquiries, please contact DDPai customer service. They aim to resolve any issue within 24 hours.

Email Support: servicecenter@ddpai.com

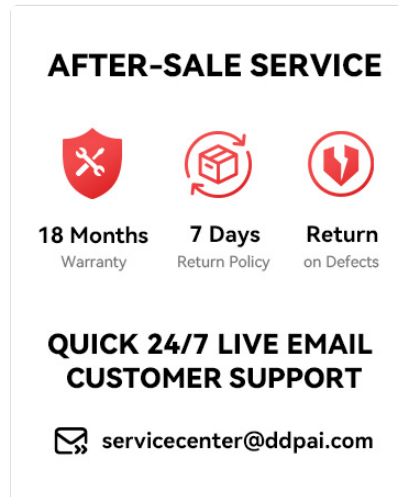


Image: DDPai After-Sale Service information.