

## Splenssy DXG6113947329543PB

# Splenssy Wireless Electronic Deadbolt Lock DXG6113947329543PB User Manual

## INTRODUCTION

---

This manual provides detailed instructions for the installation, operation, and maintenance of your Splenssy Wireless Electronic Deadbolt Lock. Please read this manual thoroughly before installation and use to ensure proper function and safety. This lock offers enhanced security with its invisible design and convenient remote control access.

## PRODUCT FEATURES

---

- **Quick Response:** Wireless lock with remote control and dual-core system for fast opening and closing. Offers two methods of operation: remote control and manual knob. Remote control range up to 10 meters.
- **Secure and Reliable:** Invisible lock design, undetectable from the exterior, providing enhanced anti-burglary protection. No external keyhole eliminates common entry points for thieves.
- **Backup Battery System:** Features a backup battery system to ensure continued operation if the main batteries are depleted, preventing accidental lockout.
- **Energy-Efficient:** Designed for low power consumption, with 4 main batteries lasting up to 16 months in standby mode.
- **Durable Construction:** Made from high-quality stainless steel for long service life and robust security.



Tiger Lock  
Method



Strong  
Security



Remote  
Unlocking



Wireless  
Design



No Lock  
Hole



Power  
Saving



*Image: Visual representation of the lock's key features including strong security, remote unlocking, wireless design, and power saving.*

# MADE OF STAINLESS STEEL

provide long service life, very strong and steady.



*Image: The lock's robust stainless steel construction ensures durability and a long service life.*

# Invisible Remote Control Lock

No keyholes outside, there is no way for thieves.



*Image: The invisible design of the lock means no keyholes are visible from the outside, preventing tampering and forced entry.*

## PACKAGE CONTENTS

---

Please verify that all the following components are included in your package:

- 1 x Door Lock Unit
- 1 x Lower Gusset Plate
- 1 x Door Bolt Holder
- 1 x Screw Kit (for installation)
- 1 x 23A 12V Battery (for backup power)
- 4 x Remote Controls
- 1 x English-Chinese User Manual



Image: The complete package contents, including the lock unit, remote controls, batteries, and installation hardware.

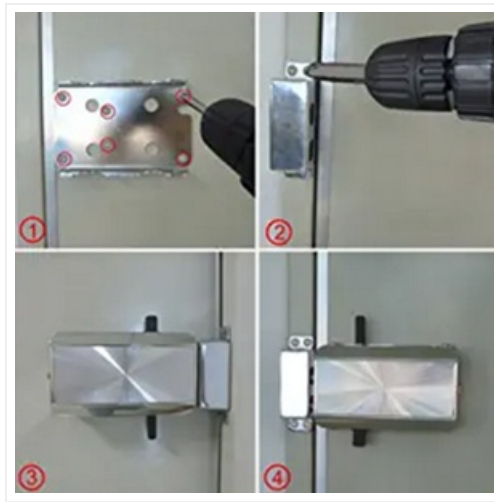
## SETUP AND INSTALLATION

The Splenssy Wireless Electronic Deadbolt Lock is designed for interior door installation. It should be mounted on the inside of the door, as the manual knob for emergency override should not be accessible from the exterior.

### Installation Steps:

- 1. Prepare the Door:** Ensure the door surface is clean and free from obstructions where the lock will be mounted.
- 2. Mount the Main Lock Unit:** Position the main lock unit on the interior side of your door. Use the provided screws to securely fasten it. Ensure it is level and aligned correctly for smooth operation.
- 3. Install the Bolt Holder:** Attach the bolt holder to the door frame, aligning it precisely with the bolts of the main lock unit. The bolts should slide smoothly into the holder when the lock is engaged.
- 4. Test Operation:** Before fully tightening all screws, test the lock's operation with a remote control and the manual knob to ensure proper locking and unlocking. Adjust as necessary.





*Image: Step-by-step visual instructions for mounting the lock unit and bolt holder onto the door and frame.*

## Door Opening Direction:

The lock can be installed to accommodate both left-opening and right-opening doors. Ensure the bolt holder is oriented correctly based on your door's swing direction.



*Image: Illustrations demonstrating how the lock can be configured for doors that open from the left or from the right.*

## OPERATING INSTRUCTIONS

---

### Using the Remote Control:

Each lock comes with four remote controls for convenient wireless operation. The remote control allows you to lock and unlock the door from a distance of up to 10 meters.

- Press the **Lock** button (closed padlock icon) to engage the deadbolt.
- Press the **Unlock** button (open padlock icon) to retract the deadbolt.



*Image: A hand demonstrating the use of the remote control to operate the electronic deadbolt lock.*

### **Manual Operation:**

In case of battery depletion or remote control malfunction, the lock can be operated manually from the inside using the rotating knob.

- Turn the knob clockwise to lock the door.
- Turn the knob counter-clockwise to unlock the door.

### **Emergency Unlock Mechanism:**

The lock features an emergency unlock screw for extreme situations. This screw is located on the side of the lock unit and can be used to manually disengage the lock if all other methods fail. It is recommended to note its exact position during installation for future reference.

# Two different ways to open and close

with the remote control and the spinning roulette.



*Image: Detailed view of the emergency unlock screw, providing an alternative manual override.*

## MAINTENANCE

---

### Battery Replacement:

The lock uses 4 CR2 batteries for main power and 1 23A 12V battery for backup. Replace batteries when you notice a decrease in performance or when the low battery indicator (if available) activates.

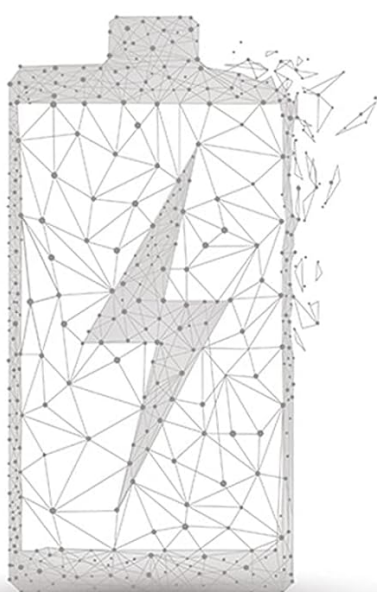
1. Locate the battery compartment on the lock unit.
2. Open the compartment cover.
3. Remove the old batteries and insert new ones, ensuring correct polarity.
4. Close the battery compartment cover securely.





Image: The internal battery compartment with main batteries visible, ready for replacement.

Once the main batteries are depleted, you can use the backup battery, no worries about dead battery and be locked outside.



Power Supply: 2\* 12V 27A Battery (included) & 1\* 23A 12V Battery (included)

Image: Visual concept of the backup battery ensuring continuous operation even when main batteries are low.

General Care:

Wipe the lock surface with a soft, dry cloth. Avoid using abrasive cleaners or solvents that could damage the finish.

TROUBLESHOOTING

- **Remote Control Not Responding:**
  - Check the battery in the remote control and replace if necessary.
  - Ensure you are within the 10-meter operating range.
  - Verify there are no obstructions blocking the signal between the remote and the lock.
- **Lock Not Engaging/Disengaging Smoothly:**
  - Check for any physical obstructions in the door frame or around the bolt holder.
  - Ensure the lock unit and bolt holder are properly aligned and securely mounted. Minor adjustments may be needed.
- **Activating Backup Battery (Emergency Procedure):**

If the main batteries are completely depleted and the lock is unresponsive, follow these steps to activate the backup battery:

  1. Tap the door from the outside, corresponding to the lock's position, until you hear a "BEEP".
  2. Immediately press any button on the remote control that has a lightning icon or a barred trapezoid icon. This activates the backup battery mode.
  3. Immediately after activating backup mode, press the **Open** (open padlock) or **Close** (closed padlock) button on the remote control to operate the lock.

SPECIFICATIONS

Brand	Splenssy
Model Number	DXG6113947329543PB
Material	Stainless Steel
Color	Silver
Finish Type	Painted
Product Dimensions (L x W x H)	23 x 17 x 6.5 cm (9.06 x 6.69 x 2.56 inches)
Weight	67 Grams (0.15 lbs)
Main Batteries	4 x CR2 (included)
Backup Battery	1 x 23A 12V (included)
Recommended Use	Door
Special Feature	Stable



*Image: Detailed dimensions of the lock unit and remote control for installation planning.*

## WARRANTY AND SUPPORT

---

Information regarding specific warranty terms and customer support contacts for the Splenssy Wireless Electronic Deadbolt Lock is not provided in this manual. Please refer to the product packaging or the seller's website for warranty details and support options.