



Manuals.plus /

› DATOUBOSS /

› DATOUBOSS DT-SC-003 Infrared Paint Curing Lamp User Manual

DATOUBOSS DT-SC-003

DATOUBOSS DT-SC-003 Infrared Paint Curing Lamp User Manual

Model: DT-SC-003 | Brand: DATOUBOSS

1. INTRODUCTION

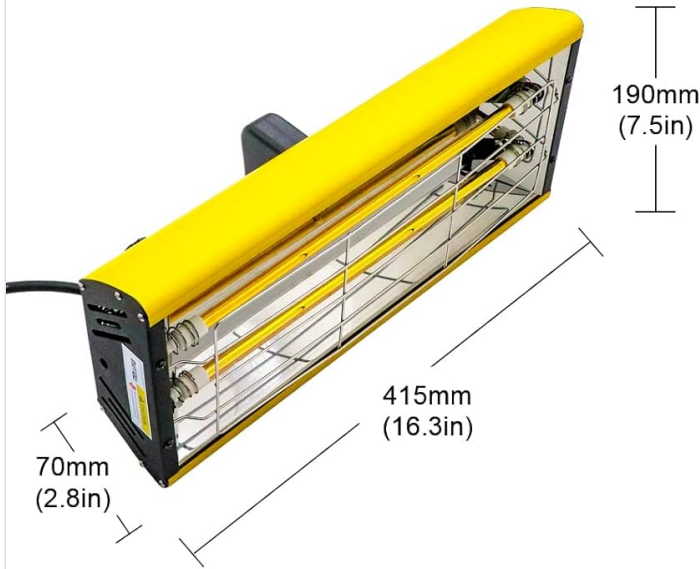
This manual provides essential information for the safe and effective use of your DATOUBOSS DT-SC-003 Infrared Paint Curing Lamp. Please read these instructions carefully before operation and retain them for future reference. This device is designed for professional and DIY applications requiring efficient paint curing and drying.

2. PRODUCT FEATURES

- **Shortwave Infrared Heating:** Utilizes shortwave infrared technology for high luminous efficiency and strong penetrating power. This ensures high thermal efficiency, penetrating the paint layer to dry from the inside out, resulting in a high surface gloss and strong coating adhesion. It helps reduce wrinkles and tears, minimizing rework.
- **Timing Function:** Equipped with an adjustable timer, allowing users to set the spraying time from 1 to 90 minutes according to the paint surface requirements. The lamp automatically shuts down when the timer reaches zero, enhancing convenience and safety.
- **Optimized Curing Area:** Provides a curing area of 650*500mm (25.6*19.7 in) with an adjustable working temperature range of 0-200 °C (0-392 °F). A specially designed high-reflectivity reflector ensures uniform heat distribution, increasing the effective curing area and reducing drying time.
- **High Heat Dissipation Performance:** Constructed from aluminum alloy, featuring an aluminum alloy mesh front and a perforated aluminum alloy sheet back. This design significantly enhances heat dissipation, contributing to a longer service life for the lamp.
- **Wide Application:** Ideal for various applications including auto spray paint rooms, local paint drying, putty drying, car spray cooking booths, on-site repairs, engine drying, removing adhesive strips, drying filler, primer desiccant, and preheating before spraying.

3. PRODUCT SPECIFICATIONS

PARAMETER



Model: DT-SC-003
Power:2000W
Lamp Material :Halogen tube
Product material:Aluminum Alloy
Voltage:110v/220V 50Hz/60Hz
Curing Area: 420*500mm (16.53*19.68in)
Lamp Tube length: 370mm (14.56in)
Operating Temperature: 0-200°C
Net weight: 2.45kg

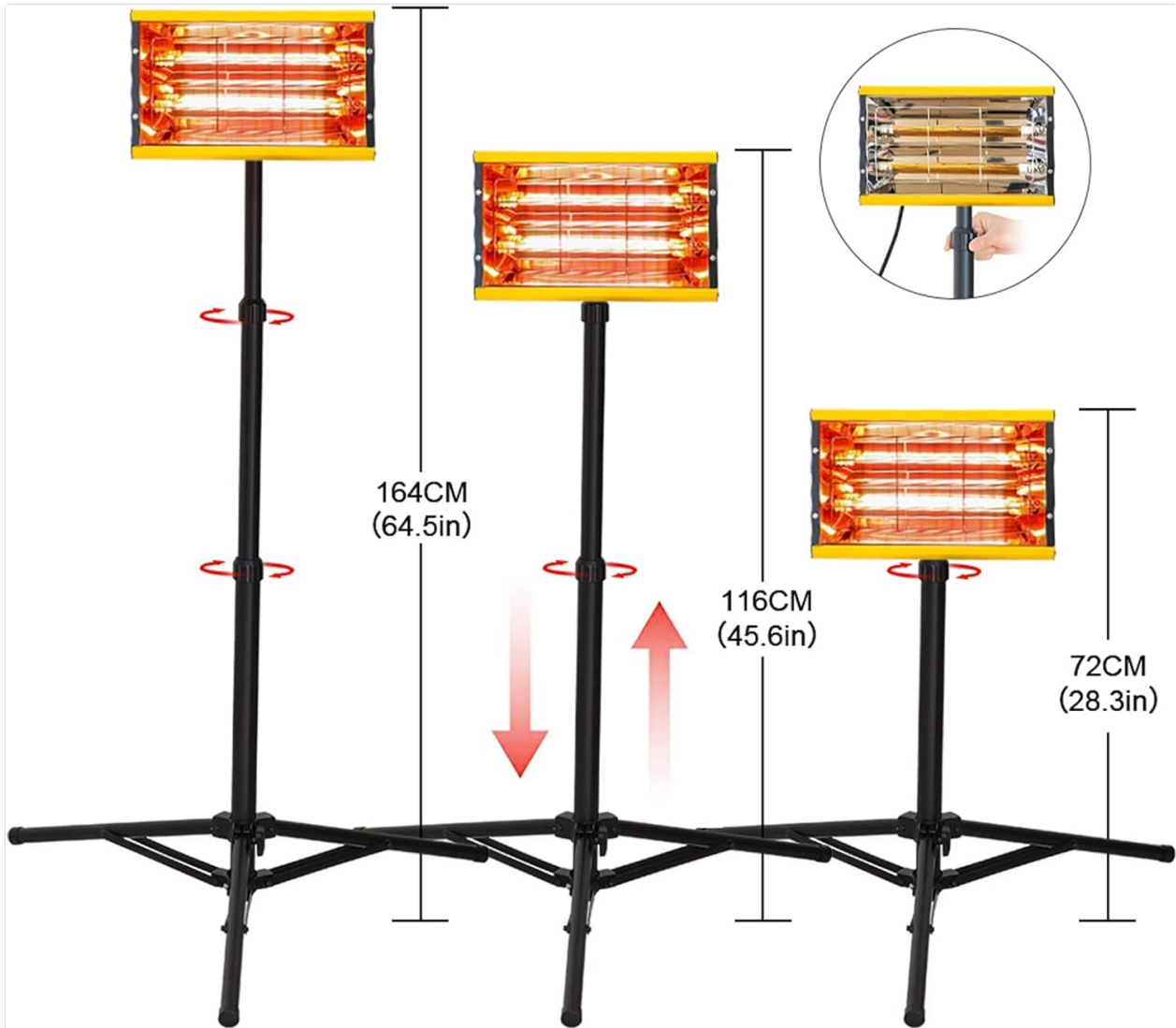


This image displays the technical specifications and dimensions of the DATOUBOSS DT-SC-003 infrared paint curing lamp. Key details include model number DT-SC-003, power 2000W, halogen tube lamp material, aluminum alloy product material, 110V/220V 50Hz/60Hz voltage, 420*500mm (16.53*19.68in) curing area, 370mm (14.56in) lamp tube length, 0-200°C (0-392°F) operating temperature, and 2.45kg net weight. Dimensions are also shown: 190mm (7.5in) height, 415mm (16.3in) length, and 70mm (2.8in) depth.

Technical Specifications

Brand	DATOUBOSS
Model	DT-SC-003
Light Type	Halogen
Special Feature	Energy Efficient
Wattage	2000 watts
Bulb Shape Size	T8
Curing Area	650*500mm (25.6*19.7 in)
Operating Temperature	0-200 °C (0-392 °F)

4. PRODUCT ACCESSORIES



This image displays the various accessories included with the DATOUBOSS infrared paint curing lamp. These include a telescopic support stand, fixing nuts, the baking lamp (SC-03) itself, a connecting plate, a fixed plate, a handle, a hexagon wrench, and an instruction manual.

The DATOUBOSS DT-SC-003 Infrared Paint Curing Lamp comes with the following components:

- Infrared Paint Curing Lamp Unit (Model SC-03)
- Telescopic Support Stand
- Connecting Plate
- Fixed Plate
- Handle
- Fixing Nuts
- Hexagon Wrench
- Instruction Manual

5. SETUP AND INSTALLATION

Follow these steps to assemble and set up your infrared paint curing lamp:

1. **Install the Connection Board:**

Manually remove the nut from the lamp unit. Align the internal thread through the holes on the connection plate with the holes on both sides of the mounting plate. Tighten the nuts and ensure the connecting plate is perpendicular to the mounting plate. Use the provided hexagon wrench to secure the screws.

1. Install the base

Manually remove the nut, adjust the bolt to the middle position, align the two holes on the base and put it in, then tighten the nut



2. Install the connection board

Align the internal thread through holes on the connecting plate with the holes on both sides of the mounting plate, tighten the nuts and ensure that the connecting plate is perpendicular to the mounting plate



3. Connect the bracket

Remove the rotating nut on the top of the bracket, align the hole in the middle of the connecting plate, and tighten the nut



4. Adjust the height

Through the two rotating devices on the bracket, a high degree of free expansion and contraction is realized



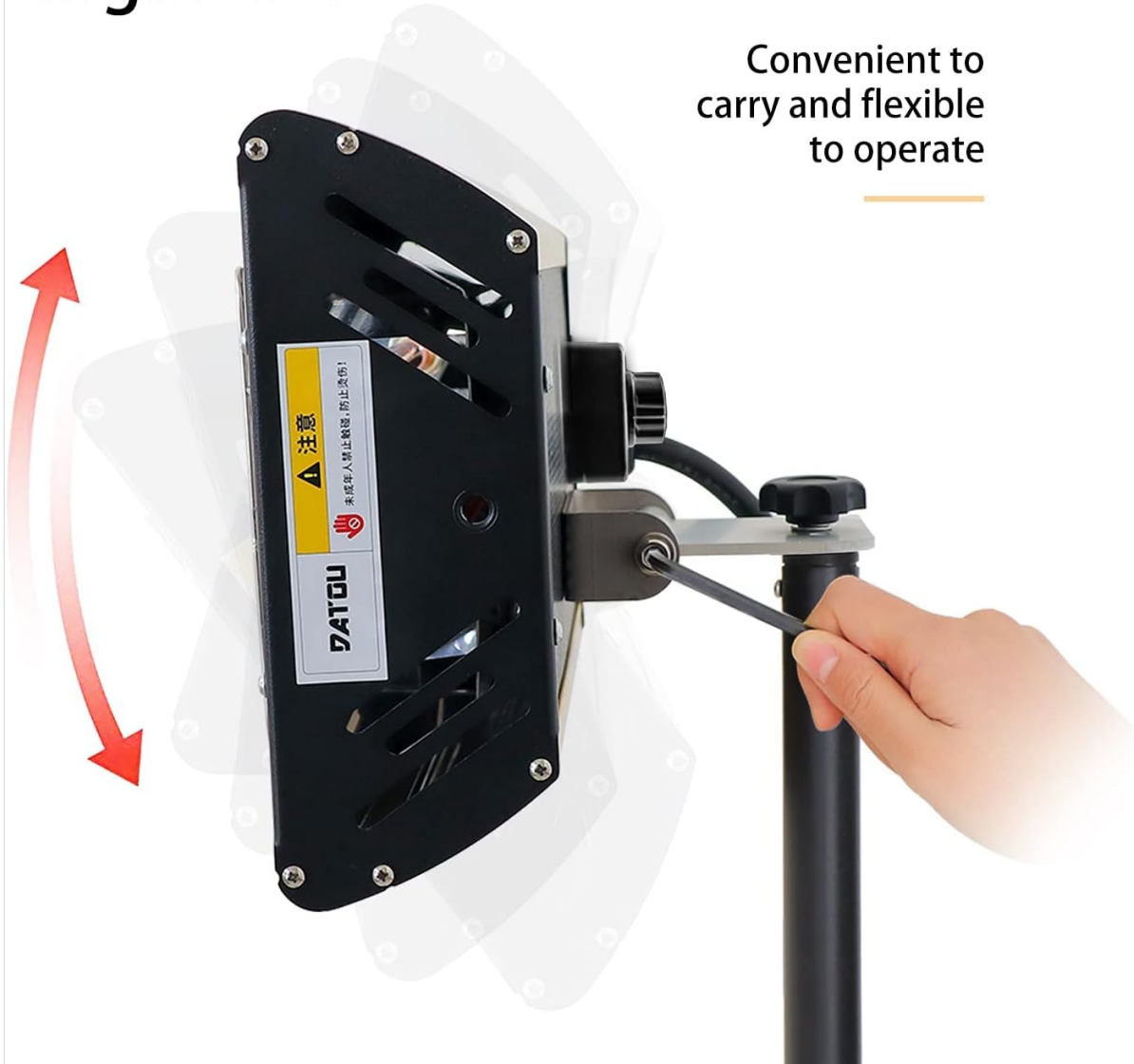
This image illustrates the process of attaching the connection board to the infrared paint curing lamp. It shows a person wearing gloves using a hex wrench to secure the connection board to the lamp's body, ensuring proper alignment and tightening of the screws.

2. Connect the Bracket/Stand:

Remove the rotating nut on the top of the telescopic support stand. Align the hole in the middle of the connecting plate (already attached to the lamp) with the top of the stand. Secure it by tightening the rotating nut.

Manually adjustable working angle 270 °

Convenient to carry and flexible to operate



This image highlights the lamp's ability to adjust its working angle up to 270 degrees, providing flexibility for directing heat. A hand is shown adjusting the angle with a wrench, emphasizing its convenient and flexible operation.

3. Adjust the Height:

The telescopic support stand allows for height adjustment. Use the two rotating devices on the bracket to expand or contract the stand to your desired working height. The lamp can be adjusted to heights such as 164cm (64.5in), 116cm (45.6in), and 72cm (28.3in).

PRODUCT ACCESSORIES



This image demonstrates the adjustable height feature of the infrared paint curing lamp when mounted on its stand. It shows the lamp at three different heights: 164cm (64.5in), 116cm (45.6in), and 72cm (28.3in), indicating the flexibility in positioning the lamp for various applications.

4. Optional Handheld Use:

For specific applications, the lamp can be detached from the stand and used with the included handle for handheld operation.

Your browser does not support the video tag.

This video provides a step-by-step demonstration of how to assemble the DATOUBOSS Infrared Paint Curing Lamp, including attaching the bracket and mounting it on the stand. It also shows the lamp in operation, highlighting its adjustable height and angle features, and the illumination of the infrared tubes.

6. OPERATING INSTRUCTIONS

Once assembled and positioned, operate the DATOUBOSS DT-SC-003 lamp as follows:

1. **Power Connection:** Plug the power cord into a suitable electrical outlet (110V/220V 50Hz/60Hz).
2. **Adjust Angle and Height:** Position the lamp to direct the infrared heat precisely onto the target area. The lamp head can be adjusted up to 270 degrees, and the stand height can be modified as needed.
3. **Set Timer:** Use the timer dial on the control panel to set the desired curing time. The adjustable range is

1 to 90 minutes. The lamp will automatically shut off once the set time has elapsed.

4. **Monitor Curing Process:** Observe the curing process to ensure optimal results. The shortwave infrared technology ensures efficient drying from the inside out.
5. **Safety Precautions:** Always wear appropriate personal protective equipment (PPE) such as gloves and eye protection. Avoid direct contact with the lamp during operation and immediately after use, as it will be hot. Ensure adequate ventilation in the working area.



This collage of close-up images shows details of the lamp. It includes the timer dial with a 'LIFE SAFETY' warning, the protective mesh for heat dissipation, a caution label warning against touching the hot surface, and a view of the internal halogen tubes.



This image illustrates the wide range of applications for the infrared paint curing lamp, including car film drying, metal processing, furniture drying, advertising construction, wheel baking, and general car paint drying.

7. MAINTENANCE

Regular maintenance ensures the longevity and optimal performance of your infrared paint curing lamp:

- **Cleaning:** Ensure the lamp is unplugged and completely cooled before cleaning. Use a soft, dry cloth to wipe down the exterior. Do not use abrasive cleaners or solvents.
- **Bulb Replacement:** If a halogen tube needs replacement, ensure the unit is unplugged and cool. Refer to the detailed instructions in the included manual for safe bulb replacement procedures.
- **Storage:** When not in use, store the lamp in a dry, clean environment, away from direct sunlight and extreme temperatures.
- **Inspection:** Periodically inspect the power cord for any signs of damage. Check all connections and fasteners to ensure they are secure.

8. TROUBLESHOOTING

If you encounter issues with your DATOUBOSS Infrared Paint Curing Lamp, refer to the following common

problems and solutions:

- **Lamp Not Turning On:**

- Check if the power cord is securely plugged into both the lamp and the electrical outlet.
- Verify that the electrical outlet is functional by plugging in another device.
- Ensure the timer is set to a duration greater than zero.

- **Insufficient Heat Output:**

- Confirm that the lamp is positioned at the correct distance from the curing surface.
- Check if the halogen tubes are fully functional and not damaged. Replace if necessary.

- **Uneven Curing:**

- Ensure the lamp is positioned evenly over the surface to be cured.
- Adjust the lamp's angle and height to achieve uniform heat distribution.

For issues not covered here, please contact DATOUBOSS customer support.

9. WARRANTY AND SUPPORT

Your DATOUBOSS Infrared Paint Curing Lamp is covered by a manufacturer's warranty. Please refer to the warranty card included in your packaging for specific terms and conditions. For technical support, replacement parts, or warranty claims, please contact DATOUBOSS customer service through the contact information provided in your product documentation or on the official DATOUBOSS website.