

[Manuals.plus](#) /

> [IWISS](#) /

> iCrimp PEX-A Expander Tool Kit Instruction Manual

IWISS F1960R(1/2",1/3",1" three rotatry head)

iCrimp PEX-A Expander Tool Kit Instruction Manual

Model: F1960R(1/2", 3/4", 1" three rotary head) | Brand: IWISS

1. INTRODUCTION

This manual provides detailed instructions for the safe and effective use of the iCrimp PEX-A Expander Tool Kit. This tool is designed for expanding PEX-A pipes for connections with F1960 standard PEX expansion systems, commonly used with Uponor ProPEX and Wirsbo. The kit includes the expander tool, multiple expansion heads, and a PEX cutter.

2. SAFETY INFORMATION

Always wear appropriate personal protective equipment, including safety glasses, when operating this tool. Ensure the work area is clear and well-lit. Do not use the tool for purposes other than its intended use. Keep hands and fingers clear of moving parts during operation. Store the tool in its case when not in use to prevent damage and injury.

3. PACKAGE CONTENTS

The iCrimp PEX-A Expander Tool Kit typically includes the following items:

- 1 x PEX-A Expander Tool
- 3 x Self-Rotary Expansion Heads (1/2", 3/4", 1")
- 1 x PEX Cutter
- 1 x Lubricant Tube
- 1 x Storage Case

ITEMS INCLUDED

Expander Tool

1/2", 3/4", 1" Expansion Heads

PEX Cutter

Lubricant



Figure 3.1: Contents of the iCrimp PEX-A Expander Tool Kit.

4. SETUP

4.1 Attaching Expansion Heads

Select the appropriate expansion head size (1/2", 3/4", or 1") for your PEX pipe. Align the head with the tool's cone and twist to secure it firmly. Ensure it is fully seated before use.

4.2 Lubrication

Apply a small amount of the provided lubricant to the cone of the expander tool and the segments of the expansion head before each use. This ensures smooth operation and extends the life of the tool and heads.

4.3 PEX Cutter Usage

Use the included PEX cutter to make clean, straight cuts on the PEX pipe. A clean cut is essential for a proper seal and connection.

IWS-F1960R



Cone made from spring steel with chrome plating for weather and corrosion resistance.

Aluminum alloy body, lightweight for easy operation in narrow spaces or at height.

Ergonomic, non-slip grips reduce hand fatigue for comfortable operation.

Hand-held, manual expanding tool for PEX-A pipe with ASTM F1960 expansion rings and fittings.



Figure 4.1: The iCrimp PEX-A Expander Tool with its cone and ergonomic handles.

3 EXPANSION HEADS



- Chrome-plated expansion heads for weather and corrosion resistance.
- Precision-machined using Electrical Discharge Machining (EDM).
- Compatible with PEX-A pipes and F1960 fittings (Uponor ProPEX, Wirsbo, Watts).

Figure 4.2: The three included expansion heads (1/2", 3/4", 1").

5. OPERATING INSTRUCTIONS

Follow these steps for proper PEX-A pipe expansion and connection:

1. **Cut:** Use the PEX cutter to make a clean, perpendicular cut on the PEX pipe.

USING INSTRUCTION

01 CUT



02 FIT



03 EXPAND



04 FINISH



Figure 5.1: Cutting the PEX pipe.

2. **Fit:** Slide the PEX expansion ring onto the end of the cut pipe.

USING INSTRUCTION

01 CUT



02 FIT



03 EXPAND



04 FINISH



Figure 5.2: Fitting the expansion ring.

3. **Expand:** Insert the expander tool's head into the pipe and expansion ring. Fully open and close the handles repeatedly to expand the pipe and ring. The tool's self-rotary feature will automatically rotate the head with each full cycle, ensuring even expansion. Continue until the pipe and ring are expanded to the required diameter for the fitting.

USING INSTRUCTION

01 CUT



02 FIT



03 EXPAND



04 FINISH



Figure 5.3: Expanding the PEX pipe and ring.

4. **Finish:** Immediately after expansion, remove the tool and firmly push the expanded pipe and ring onto the PEX fitting. Hold in place for a few seconds to allow the PEX to contract and create a secure connection.

USING INSTRUCTION

01 CUT



02 FIT



03 EXPAND



04 FINISH

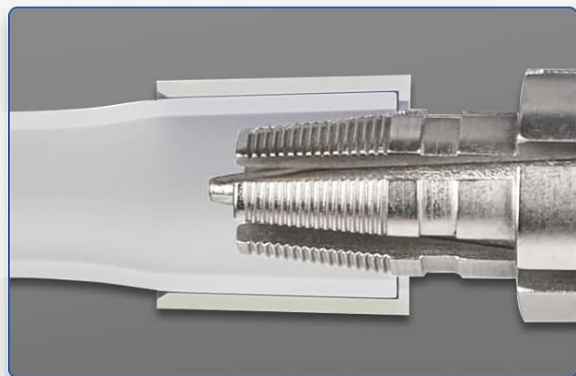


Figure 5.4: Completing the PEX connection.

5.1 Understanding Auto-Rotation

The iCrimp PEX-A Expander Tool features an auto-rotation mechanism designed to ensure uniform expansion of the PEX pipe, preventing deep grooves and potential leaks. The expansion head will automatically rotate 15°-30° after each full cycle of opening and closing the handles.

AUTO ROTATION



The expansion head will automatically rotate 15°-30° after each full cycle of opening and closing the handles.

Figure 5.5: Illustration of the auto-rotation feature.

Your browser does not support the video tag.

Video 5.1: Demonstration of the F1960R Expansion Operation, highlighting the auto-rotation feature.

6. MAINTENANCE

Regular maintenance ensures the longevity and optimal performance of your iCrimp PEX-A Expander Tool Kit:

- **Cleaning:** After each use, wipe down the tool and expansion heads with a clean, dry cloth to remove any debris or excess lubricant.
- **Lubrication:** Periodically reapply lubricant to the cone and expansion head segments, especially if the tool feels stiff during operation.
- **Storage:** Store the tool and all accessories in the provided storage case in a dry, clean environment to prevent rust and damage.

7. TROUBLESHOOTING

7.1 Auto-Rotation Not Functioning

If the expansion head does not auto-rotate as expected, check the following conditions:

- **Tool without inserted fittings or pipes:** The auto-rotation mechanism is designed to engage only when the expansion head is encircled by the PEX tubing during expansion. It will not rotate if the tool is operated without a pipe inserted.
- **Handles not fully open:** Ensure the handles are fully opened after each expansion stroke. The auto-rotation mechanism requires the handles to complete a full open-and-close cycle to trigger the rotation.



Figure 7.1: Common reasons for auto-rotation issues.

WHY THE HEAD CAN'T ROTATE 30 DEGREE?

1. The tool can't rotate 30 degree without inserted fittings or pipes.



2. The handles must be fully opened.



Figure 7.2: Visual guide to ensure proper auto-rotation.

8. SPECIFICATIONS

Feature	Detail
Model	F1960R(1/2", 3/4", 1" three rotary head)
Material	Aluminum, High-strength Steel
Brand	IWISS
Color	Black
Connector Type	Barb
Exterior Finish	Chrome

Feature	Detail
Item Weight	16 ounces (tool only), 1 pound (package)
Number of Pieces	1 (tool kit)
Manufacturer	IWISS TOOLS
Package Dimensions	17.83 x 10.55 x 2.72 inches
Batteries Required?	No

9. WARRANTY AND SUPPORT

For warranty information or technical support, please contact IWISS customer service. Refer to the product packaging or the official IWISS website for the most current contact details.

You can visit the official IWISS store for more information:[IWISS Store](#)

