

GODOX MF12-K2

Godox MF12-K2 Macro Flash Kit Instruction Manual

Model: MF12-K2

[Introduction](#) [What's in the Box](#) [Setup](#) [Operating](#)
[Instructions](#) [Maintenance](#) [Troubleshooting](#) [Specifications](#)

1. INTRODUCTION

The Godox MF12-K2 Macro Flash Kit is designed for macro photography, providing precise and flexible lighting solutions for small subjects. This kit includes two MF12 macro flashes, which can be used individually or combined with the included mounting ring and adapter rings for various lighting configurations. The flashes feature a built-in lithium battery, TTL auto flash, and 2.4G wireless control for versatile operation.

2. WHAT'S IN THE BOX

Verify that all items listed below are included in your package:

- 2 x Godox MF12 Macro Flashes
- 2 x Flash Stands
- 2 x Cold Shoe Adapters
- 2 x Color Filter Holders
- 2 x Color Effects Set MF-11C (various colored gels)
- 2 x Color Temperature Adjustment Set MF-11T (various color temperature gels)
- 2 x Extreme Close-Up Positioning Adapters
- 1 x Mounting Ring MF-AR
- 1 x Adapter Rings Kit AR-R Kit (includes 49mm, 52mm, 55mm, 58mm, 62mm, 67mm, 72mm, 77mm rings)
- 1 x Carry Case
- 2 x USB Type-C Charging Cables



Image: The complete Godox MF12-K2 Macro Flash Kit, showing two MF12 flashes, mounting ring, adapter rings, color filters, charging cables, and carry case.



Image: A detailed layout of all components included in the MF12-K2 kit, including flashes, ring, adapters, and accessories.

3. SETUP

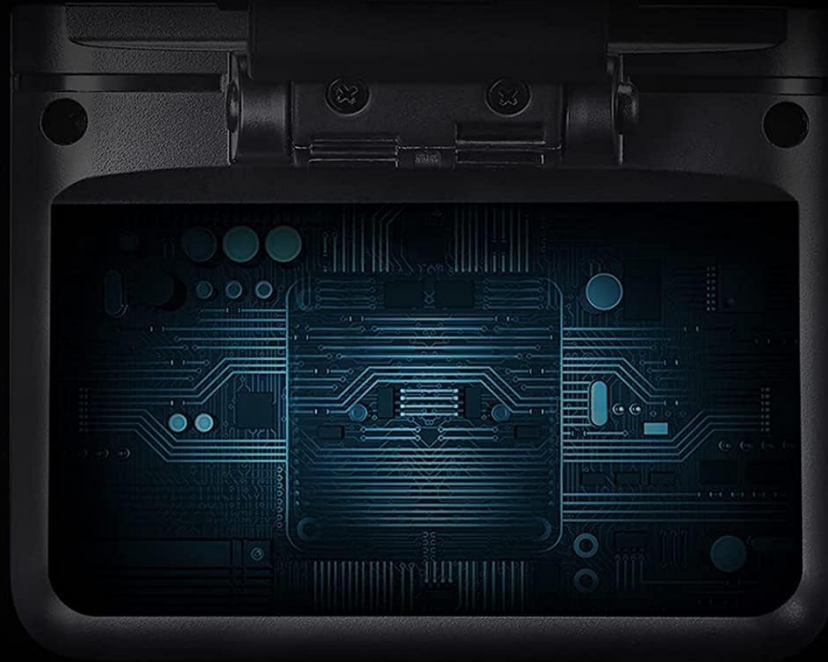
3.1 Charging the MF12 Flashes

Each MF12 flash unit has a built-in lithium battery. Before first use, fully charge the flashes.

1. Locate the USB Type-C port on the side of the MF12 flash unit.
2. Connect the provided USB Type-C cable to the flash unit and a compatible USB power source (e.g., USB wall adapter, computer USB port).
3. The charging indicator will show the charging status. Once fully charged, the indicator will change (refer to the flash unit's display for specific indications).

Rechargeable High-performance Battery

The powerful built-in lithium battery supports maximum 500 full-power flashes and 0.01-1.7s recycling time, which guarantees a long-time creation without interruption. When the power runs down, you can easily recharge it through a type-c cable.



0.01-1.7s
Recycling Time



Supports Maximum
500 Full-Power Flashes



Type-C USB
Cable

Image: A close-up of the MF12 flash unit highlighting its Type-C charging port and battery status display.

3.2 Attaching Flashes to the Mounting Ring (MF-AR)

The MF-AR mounting ring allows for flexible positioning of the MF12 flashes around your lens.

1. Align the MF12 flash unit with one of the mounting slots on the MF-AR ring.
2. Slide the flash into the slot until it clicks securely into place.
3. Repeat for the second MF12 flash unit.
4. The flashes can be rotated and slid along the ring for optimal positioning.

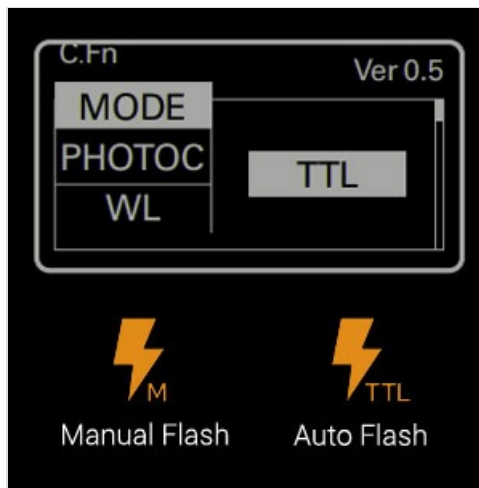


Image: The MF-AR mounting ring, designed to hold the MF12 flashes.

3.3 Attaching the Mounting Ring to Your Lens

Use the appropriate adapter ring from the AR-R Kit to attach the MF-AR mounting ring to your camera lens.

1. Determine the filter thread size of your camera lens (e.g., 49mm, 52mm, 77mm).
2. Select the corresponding adapter ring from the AR-R Kit.
3. Screw the selected adapter ring onto the front filter thread of your lens.
4. Attach the MF-AR mounting ring (with flashes) to the adapter ring by aligning the grooves and twisting until secure.

Mounting Ring for Multi-Flash Solution

Adapter Ring Set features 8 different sizes(49mm,52mm,55mm,58mm,62mm,72mm,77mm), which matches most of the lenses.



Color Filters for Creating a Colorful Light Effect.



Image: The MF-AR mounting ring displayed with a selection of adapter rings from the AR-R Kit, showing different sizes.

3.4 Using Flashes Off-Camera

For off-camera lighting, use the provided flash stands and cold shoe adapters.

1. Attach a cold shoe adapter to the bottom of an MF12 flash unit.
2. Mount the flash unit with the cold shoe adapter onto a flash stand or other compatible light stand.
3. Position the flash as desired for your lighting setup.

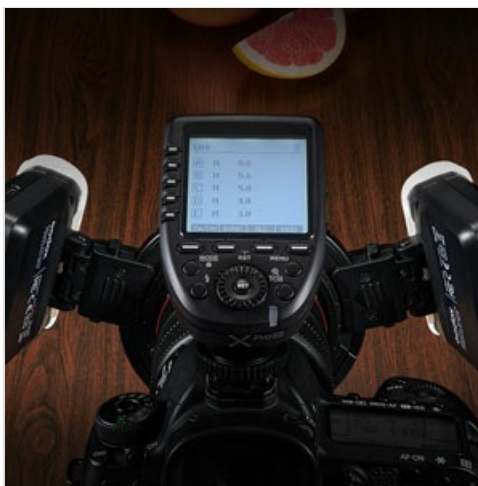


Image: A flash stand for supporting the MF12 unit off-camera.

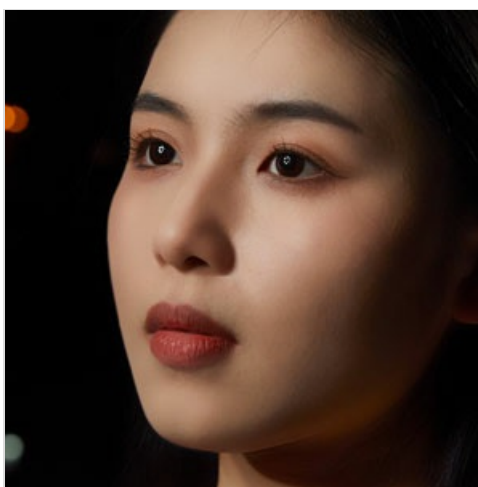


Image: A cold shoe adapter for mounting the MF12 flash.

3.5 Attaching Color Filters and Extreme Close-Up Adapters

The kit includes color filter sets (MF-11C, MF-11T) and extreme close-up positioning adapters for creative lighting and precise subject illumination.

1. Slide the desired color filter into the color filter holder.
2. Attach the color filter holder to the front of the MF12 flash unit.
3. For extreme close-up work, attach the extreme close-up positioning adapter to the front of the flash unit.

Multi-flash Setup for Broader Usage

The combination can handle various scenarios easily depending on the number of flashes and the way you setup.



While not over-shined to be obtrusive for small animals or insects.



When adding more flashes, it brings a brighter light source to light up larger space while reducing shadows on the subject.



Supports the installation of multiple, instead of illuminating forward only, every flash can rotate to a different angle freely and slide around the mounting ring for correct positioning.

Image: Examples of MF12 flashes with color filters applied, demonstrating their use in a multi-flash setup.

4. OPERATING INSTRUCTIONS

4.1 Powering On/Off

To power on the MF12 flash, press and hold the power button until the display illuminates. To power off, press and hold the power button again until the display turns off.

4.2 Flash Modes (TTL and Manual)

The MF12 supports both TTL (Through-The-Lens) auto flash and Manual (M) flash modes.

- **TTL Mode:** The flash automatically adjusts its output based on the camera's metering system. This is suitable for quick shooting and changing light conditions.
- **Manual Mode:** Allows you to manually set the flash power output (e.g., 1/1 to 1/128). This provides precise control over lighting for consistent results.

Refer to the flash unit's display and controls to switch between modes and adjust settings.



Image: A close-up of the MF12 flash unit's display, showing mode and power settings.

4.3 2.4G Wireless Control

The MF12 flashes can be controlled wirelessly using a compatible Godox 2.4G wireless trigger (e.g., XPro, X1, X2, X3 series, sold separately). This allows for remote control of flash power, mode, and group settings.

- **Compatibility:** Works with camera systems from Nikon, Sony, Canon, Fuji, Olympus, and Panasonic when paired with the appropriate Godox trigger.
- **Groups and Channels:** The system supports 5 groups and 32 channels, minimizing interference when multiple wireless systems are in use.
- **Setup:** Ensure your MF12 flashes and wireless trigger are set to the same group and channel. Refer to your trigger's manual for specific pairing instructions.

2.4G Wireless Control

2.4G wireless technology enables long-distance transmission, adding more flexibility to your shooting. 5 groups with 32 channels each help to prevent disturbance when several wireless systems working together.



Image: A Godox XPro wireless trigger mounted on a camera hot shoe, wirelessly controlling two MF12 flashes attached to the lens.

Rechargeable High-performance Battery

The powerful built-in lithium battery supports maximum 500 full-power flashes and 0.01-1.7s recycling time, which can support a long-time creation without interruption. When the power runs down, you can easily recharge it through a type-c cable.



0.01-1.7s
recycling time



Supports maximum
500 full-power flashes



Type-C USB
Cable

Image: The display of a Godox XPro trigger, illustrating the interface for adjusting flash settings for multiple groups.



Image: A Godox XPro wireless trigger.



Image: A Godox X2T wireless trigger.

4.4 Multi-Flash Configurations

The MF12 flashes can be arranged in various ways to achieve different lighting effects for macro photography.

- **Ring Flash Effect:** Attach both MF12 units to the MF-AR mounting ring for even, shadow-reducing illumination, ideal for capturing fine details.
- **Directional Lighting:** Use the adjustable heads of the MF12 units to direct light from specific angles, creating shadows and enhancing texture.
- **Off-Camera Lighting:** Utilize the flash stands and cold shoe adapters to position flashes independently for more complex lighting setups.

Small World Big Magic

MF12 is perfect for macro lighting, which enables you to shoot beautiful and sharp photos of small subjects, like plants, animals and insects, in extremely close distance. It's not only ideal to work individually, but also can serve as a multi-flash solution when several units attach to the mounting ring, forming a ring flash effect or more other flexible light effects as you wish.



Image: An MF12 flash mounted on a camera lens, demonstrating its use for macro photography of small subjects.

The Power Behind the Scene

The small flash unit mounted on the stand is exactly what a macro photographer needs. Adjustable head for quick positioning, even extreme close-up range is within its reach. Compact size results in "invisibility", lighting up the object while hiding itself away easily from the frame.



Image: Two MF12 flashes positioned to illuminate a ring, showcasing precise lighting for small objects.



Image: Illustrations of different multi-flash setups using the MF12 units, including a ring flash configuration and off-camera placement for food photography.

5. MAINTENANCE

- **Cleaning:** Use a soft, dry cloth to clean the flash units and accessories. Avoid using harsh chemicals or abrasive materials.
- **Storage:** Store the kit in the provided carry case in a cool, dry place away from direct sunlight and extreme temperatures.
- **Battery Care:** For optimal battery life, fully charge the flashes before long-term storage and recharge them every three months if not in use.
- **Handling:** Handle the flash units and accessories with care to prevent damage from drops or impacts.

6. TROUBLESHOOTING

Problem	Possible Cause	Solution
Flash not firing	Low battery; Incorrect wireless settings; Flash not powered on; Trigger not compatible or paired.	Charge the battery; Verify flash is powered on; Check group and channel settings on flash and trigger; Ensure trigger is compatible and properly paired with the flash.
Flash output inconsistent	TTL metering issues; Manual power set too low/high; Obstruction between flash and subject.	Switch to Manual mode and adjust power; Ensure clear line of sight; Check camera's metering mode.
Flashes not mounting securely	Incorrect adapter ring size; Mounting ring not properly aligned.	Ensure the correct adapter ring size is used for your lens; Verify the MF-AR ring is twisted securely onto the adapter ring.

7. SPECIFICATIONS

Feature	Detail
Model	MF12-K2
Brand	GODOX
Flash Type	Macro Flash
Compatible Mountings	Canon, Sony, Nikon, Fuji, Panasonic (with compatible trigger)
Flash Sync Speed	1/250s
Battery	Built-in Lithium Ion (1 required, included)
Full-Power Flashes	Up to 500
Recycling Time	0.01-1.7 seconds
Product Dimensions	3.19 x 3.03 x 2.56 inches (per flash unit)
Item Weight	2.46 pounds (total kit)
ASIN	B09CKXG1DQ
Date First Available	August 13, 2021

8. WARRANTY AND SUPPORT

For warranty information and technical support, please refer to the official GODOX website or contact your local distributor. Keep your purchase receipt as proof of purchase for warranty claims.

Additional product information can sometimes be found using the UPC:6952344222430

For further inquiries, you may also visit the GODOX store on Amazon:GODOX Store