

[Manuals.plus](#) /

> [SXFJF](#) /

> TWS Wireless Bluetooth 5.0 Earbuds User Manual

SXFJF Sports Games Earbuds

TWS Wireless Bluetooth 5.0 Earbuds User Manual

Model: Sports Games Earbuds

INTRODUCTION

Thank you for choosing the SXFJF TWS Wireless Bluetooth 5.0 Earbuds. These earbuds are designed to provide a superior audio experience with advanced features such as HiFi stereo sound, noise cancellation, and IPX8 waterproofing. This manual will guide you through the setup, operation, maintenance, and troubleshooting of your new earbuds.



Image: The TWS Wireless Bluetooth 5.0 Earbuds and their charging case.

PACKAGE CONTENTS

- 2 x Wireless Headphones (Earbuds)
- 1 x Type-C Charging Cable
- 1 x Charging Case
- 1 x Use Manual (This document)

SETUP

1. Charging the Earbuds and Case

Before first use, ensure both the earbuds and the charging case are fully charged. Connect the Type-C charging cable to the charging port on the case and a USB power source. The indicator lights on the case will show charging status.



Touch



SPORTS



HIFI



waterproof

Magnetic charge

Built-in mobile power function can provide repeated headset 3 times



Image: Magnetic charging feature of the earbuds within the case.

2. Pairing with Your Device

1. Take both earbuds out of the charging case. They will automatically power on and enter pairing mode.
2. On your device (smartphone, tablet, etc.), enable Bluetooth.
3. Search for available Bluetooth devices and select "Sports Games Earbuds" (or similar name) from the list.
4. Once connected, you will hear a confirmation sound, and the earbuds' indicator lights will change.

After the initial pairing, the earbuds will automatically connect to your device when taken out of the charging case, provided Bluetooth is enabled on your device.

BLUETOOTH 4.1

Eardbud working range: 10M



IP5 waterproof rating design:
to prevent the water splash,
not into the water

Ergonomic design: suitable for ears

Image: Bluetooth pairing illustration and ergonomic design.

OPERATING INSTRUCTIONS

Touch Controls

The earbuds feature touch-sensitive controls for various functions:

- **Power On/Off:** Automatically power on when removed from case, off when placed back. Manual power on/off may involve a long press on the touch area.
- **Play/Pause:** Single tap on either earbud.

- **Next Track:** Double tap on the right earbud.
- **Previous Track:** Double tap on the left earbud.
- **Answer/End Call:** Single tap on either earbud during an incoming call.
- **Reject Call:** Long press on either earbud during an incoming call.
- **Activate Voice Assistant (Siri/Google Assistant):** Triple tap on either earbud.



Image: Earbud touch control functions and charging case components.

Usage Modes

The earbuds can be used in various configurations:

- **Single Earbud Use:** Either the left or right earbud can be used independently. Simply take one out of the case, and it will connect.
- **Dual Earbud Use:** For stereo sound, use both earbuds together. They will automatically pair with each other and then with your device.

Earbuds Introduce

The two earphones are equipped with different mobile phones and can be used separately.

when two eaphones are paired with the same mobile phone, the one with reminder sound can be used alone.

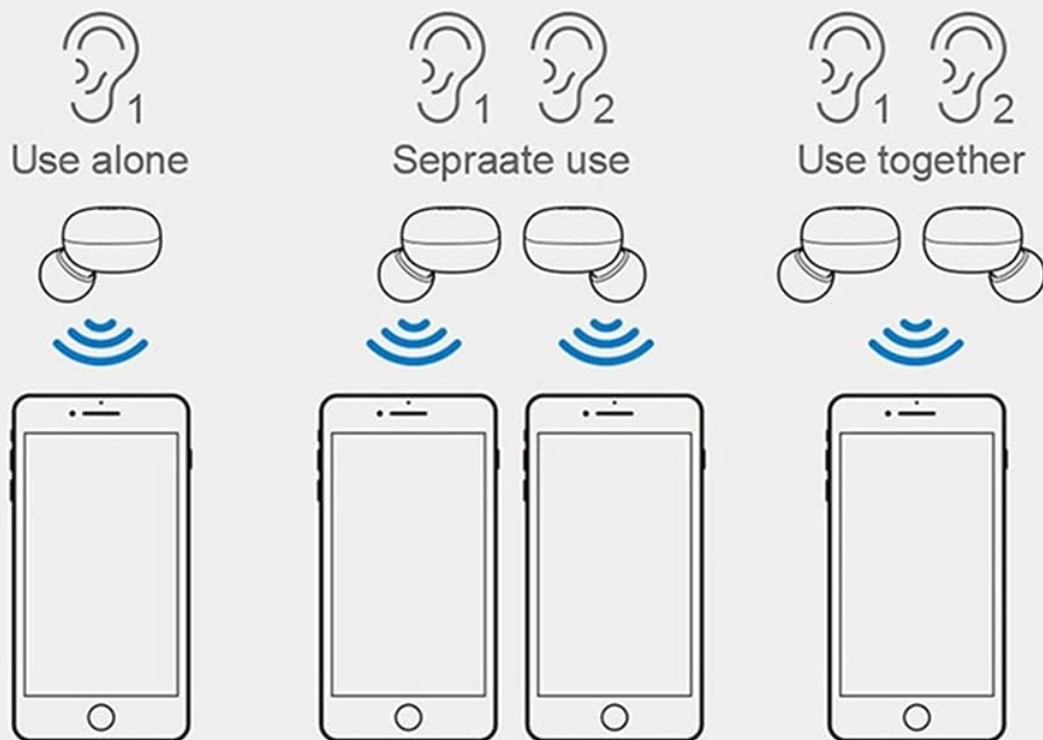


Image: Different usage modes for the earbuds.

MAINTENANCE

- **Cleaning:** Use a soft, dry cloth to clean the earbuds and charging case. Do not use harsh chemicals or abrasive materials.
- **Storage:** When not in use, store the earbuds in their charging case to protect them and keep them charged.
- **Water Resistance:** The earbuds are IPX8 waterproof, meaning they can withstand immersion in water. However, it is recommended to wipe them dry after exposure to water to prevent moisture buildup in the charging contacts. Do not expose the charging case to water.

Waterproof bring user experience

Almost 50% electronic equipments was damaged humidity. Bluetooth headset belong to high precision electronic equipment, if damaged by humidity, it will be impossible to repair.



Waterproof

Sweatproof
sports Sweatproof

Dirtproof
nanoparticles
Surface technology

Image: Earbuds highlighting their waterproof feature.

TROUBLESHOOTING

- **Earbuds not pairing with each other:** Place both earbuds back into the charging case, close the lid, wait a few seconds, then take them out again. They should automatically re-sync.
- **Earbuds not connecting to device:** Ensure Bluetooth is enabled on your device and the earbuds are charged. Forget the device in your phone's Bluetooth settings and try pairing again.
- **No sound from one earbud:** Check if both earbuds are charged. Try resetting them by placing them in the case and then taking them out.
- **Charging issues:** Ensure the charging cable is securely connected and the charging port is clean. Try a different USB power source.

SPECIFICATIONS

Feature	Specification
Product Name	Sports Games Earbuds

Bluetooth Version	V5.0
Bluetooth Range	10 meters (without barriers)
Play Time	5 hours
Talk Time	5 hours
Standby Time	50 hours
Charging Case Battery	330 mAh
Water Resistance Rating	IPX8
Frequency Response Range	20Hz-20KHz
Material	ABS+PC
Weight	Approx. 30g

WARRANTY AND SUPPORT

For warranty information and customer support, please refer to the product packaging or contact the retailer where you purchased the product. Keep your purchase receipt as proof of purchase.
