

Mxmoonant Scent Air Machine (B09CGZR2PR)

Mxmoonant Scent Air Machine User Manual

Brand: Mxmoonant | **Model:** Scent Air Machine (B09CGZR2PR)

1. INTRODUCTION

The Mxmoonant Scent Air Machine is an advanced aromatherapy diffuser designed to enhance your environment with soothing scents. Utilizing nano atomization and recyclable oil return technology, it efficiently atomizes essential oils of varying viscosities, uniformly releasing effective components. This device is ideal for improving mood, covering pet odors, and promoting better sleep. With an 800ml essential oil bottle, it offers extensive coverage from 1500 to 3000 sq. ft., expandable by connecting to an HVAC system or using its built-in fan.



Figure 1: The Mxmoonant Scent Air Machine, a compact white device, shown with a smartphone displaying its companion Aroma-Link application, highlighting its smart control capabilities.

2. SETUP GUIDE

1. **Unpack the Device:** Carefully remove all components from the packaging. Ensure you have the Scent Air Machine, power adapter, keys, and the clear tube for HVAC connection.
2. **Power Connection:** Plug the power adapter into the machine and then into a suitable electrical outlet. The display screen will illuminate.
3. **Accessing the Oil Bottle:** Use the provided keys to unlock the top cover of the machine. Gently lift the cover to reveal the 800ml essential oil bottle.

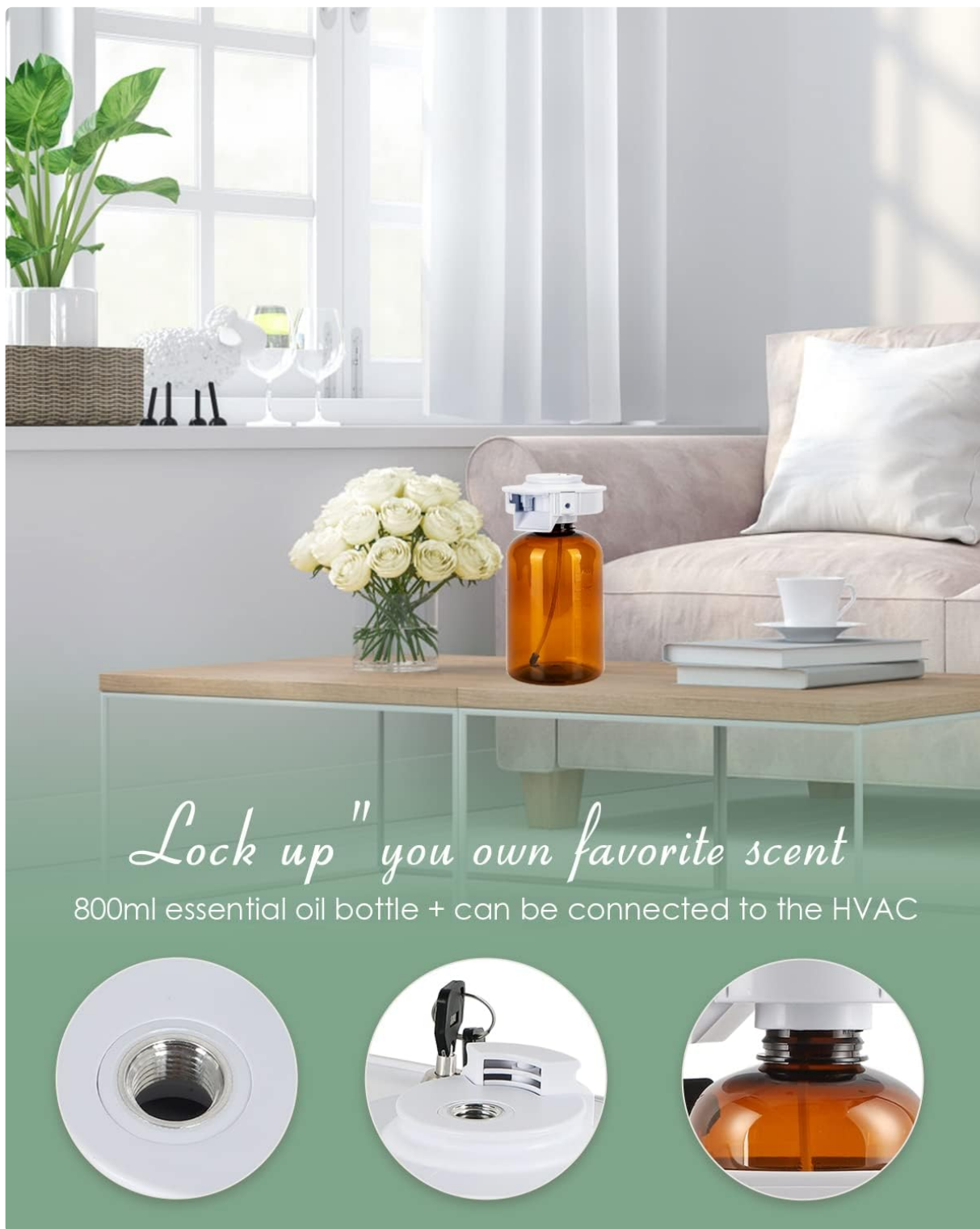


Figure 2: The internal compartment of the Scent Air Machine, designed to securely hold the essential oil bottle.

4. **Filling the Essential Oil Bottle:** Unscrew the top of the essential oil bottle. Fill it with your preferred essential oil. **Do not overfill.** Ensure the oil viscosity is suitable (e.g., $30 < \text{mPa.s} < 50$ is good, $>50 \text{ mPa.s}$ may block). Do not add water to the essential oil bottle.

Essential Oil Selection



Figure 3: Guidelines for selecting and filling essential oils, emphasizing proper viscosity and avoiding overfilling or adding water.

5. **Reinsert and Lock:** Screw the top back onto the essential oil bottle and carefully place it back into the machine. Close the top cover and lock it using the keys.
6. **Initial Power On:** Long press the "ENT" button on the control panel to power on the diffuser.

3. OPERATING INSTRUCTIONS

The Mxmoonant Scent Air Machine offers two primary control modes: direct manual control via the device's buttons and intelligent operation via a mobile application.

3.1. Manual Control

Use the "BACK", "ENT", and arrow buttons on the device's control panel to navigate settings and adjust operation parameters such as working time and pause intervals. The display screen provides real-time information on the current settings.

3.2. App Control (Aroma-Link)

1. **Download the App:** Search for "Aroma-Link" in your mobile device's app store and download it.
2. **Connect to Device:** Ensure your device's Bluetooth is enabled. Open the Aroma-Link app. The app will guide you through the connection process. The default password for connection is **1234**.

Scent xmoonant
Aroma Diffuser

800ML

Coverage - 1500-3000 sq.ft.

Efficient Atomization

Waterless

Energy Saving

Easy Mobile Control

ECO

Please search in the app store

Aroma-Link

Figure 4: The Scent Air Machine can be controlled conveniently via the Aroma-Link mobile application.

3. **Adjust Settings:** Once connected, you can intelligently operate the diffuser, setting schedules, intensity, and other preferences directly from your smartphone.

3.3. Placement and Coverage

The Scent Air Machine offers versatility in placement. It can be placed on desks, floors, or mounted on walls. It is designed to enhance small-scale areas like living rooms, bedrooms, and offices, providing relaxation and air purification during activities such as yoga or gatherings.

For larger coverage (1500-3000 sq. ft.), you can expand its reach using the built-in fan or by connecting it to your HVAC system. To connect to HVAC, use the provided clear tube and the specialized connector. Push the connector into the designated port on the machine, then firmly push the tube onto the connector. The other end of the tube connects to your HVAC system to distribute the scent throughout your entire home or office.



Figure 5: The diagram illustrates the option to connect the Scent Air Machine to an HVAC system for broader fragrance distribution.

4. MAINTENANCE

- **Refilling Essential Oil:** When the essential oil level is low, follow the steps in Section 2.3 to refill the 800ml bottle. Regular refilling ensures continuous operation.
- **Cleaning:** Periodically clean the exterior of the machine with a soft, dry cloth. For the essential oil bottle and internal components, refer to the detailed cleaning instructions in the full manual (not provided here).
- **Storage:** If storing the device for an extended period, ensure the essential oil bottle is empty and clean. Store in a cool, dry place.

5. TROUBLESHOOTING

- **Password Error during App Connection:** If you encounter a password error when connecting via the Aroma-Link app, you can restore factory settings. Press the "BACK" and "Right Arrow" buttons simultaneously. Select "YES" using the "Right Arrow" button and confirm with "ENT". Completion is indicated by "OK" on the display and an audible beep sound.
- **No Scent/Weak Scent:**
 - Check essential oil level in the bottle.
 - Ensure the essential oil viscosity is appropriate (refer to Section 2.3).
 - Verify that the machine is powered on and operating according to your set schedule.
 - If connected to HVAC, ensure the tube is securely connected and not kinked.
- **Device Not Powering On:**
 - Check if the power adapter is securely plugged into both the device and the electrical outlet.

- Ensure the electrical outlet is functional.
- **Other Issues:** For any other problems encountered during use, please contact the seller via Amazon email for assistance.

6. SPECIFICATIONS

Feature	Detail
Brand	Mxmoonant
Model Name	Scent Air Machine
Color	White
Recommended Uses For Product	Home, Office
Material	Polypropylene (PP)
Special Feature	Touch Screen Control
Power Source	Corded Electric
Capacity	800 Milliliters
Floor Area	3000 Square Feet
Product Dimensions	7.87"L x 4.33"W x 10.63"H
Coverage	1500-3000 sq.ft.
Runtime	8 hours
Wattage	13 watts
Shape	Square
Auto Shutoff	Yes
Item Weight	5.65 pounds

7. IMPORTANT SAFETY INFORMATION

- Avoid direct skin contact with undiluted essential oils.
- Keep out of reach of children and pets.
- Ensure proper ventilation during use.

8. SUPPORT

For any questions, technical support, or issues not covered in this manual, please contact Mxmoonant customer service directly via Amazon email. Our team is ready to assist you.

