

manuals.plus /

- › [Gillette](#) /
- › [Gillette Mach3 Turbo Shaving Razor User Manual](#)

## Gillette 80702925

# Gillette Mach3 Turbo Shaving Razor User Manual

Model: 80702925

### PRODUCT OVERVIEW

---

The Gillette Mach3 Turbo is a premium shaving razor designed for men, offering a comfortable and close shave. It features advanced technologies such as Flexball and Dynamic Pivot for enhanced maneuverability, anti-friction blades, and a lubricating strip for smooth glides and sensitive skin protection.



Image: Gillette Mach3 Turbo Razor and its retail packaging, showcasing the product design and branding.

### Key Features:

- **World's #1 3-bladed razor:** Engineered for superior performance.
- **Long-lasting comfort:** Feels better even after 10 shaves compared to a first shave with a disposable razor.
- **Durable Blades:** Three stronger-than-steel, high-definition imported blades (manufactured in Germany) designed for up to 15 shaves.
- **Ergonomic Handle:** Sporty red chrome metal handle provides a sturdy grip for precise control.
- **Skin Protection:** Features 3 microfins' skin guard to gently stretch and hold the skin, preparing it for a close shave.
- **Flexball Technology:** Allows the razor head to pivot and adapt to facial contours for maximum contact and comfort.
- **Lubricating Strip:** Provides a smooth glide and indicates when it's time to change the blade (turns white).

# ONE STROKE COMFORT

You take 1 stroke, it takes 3

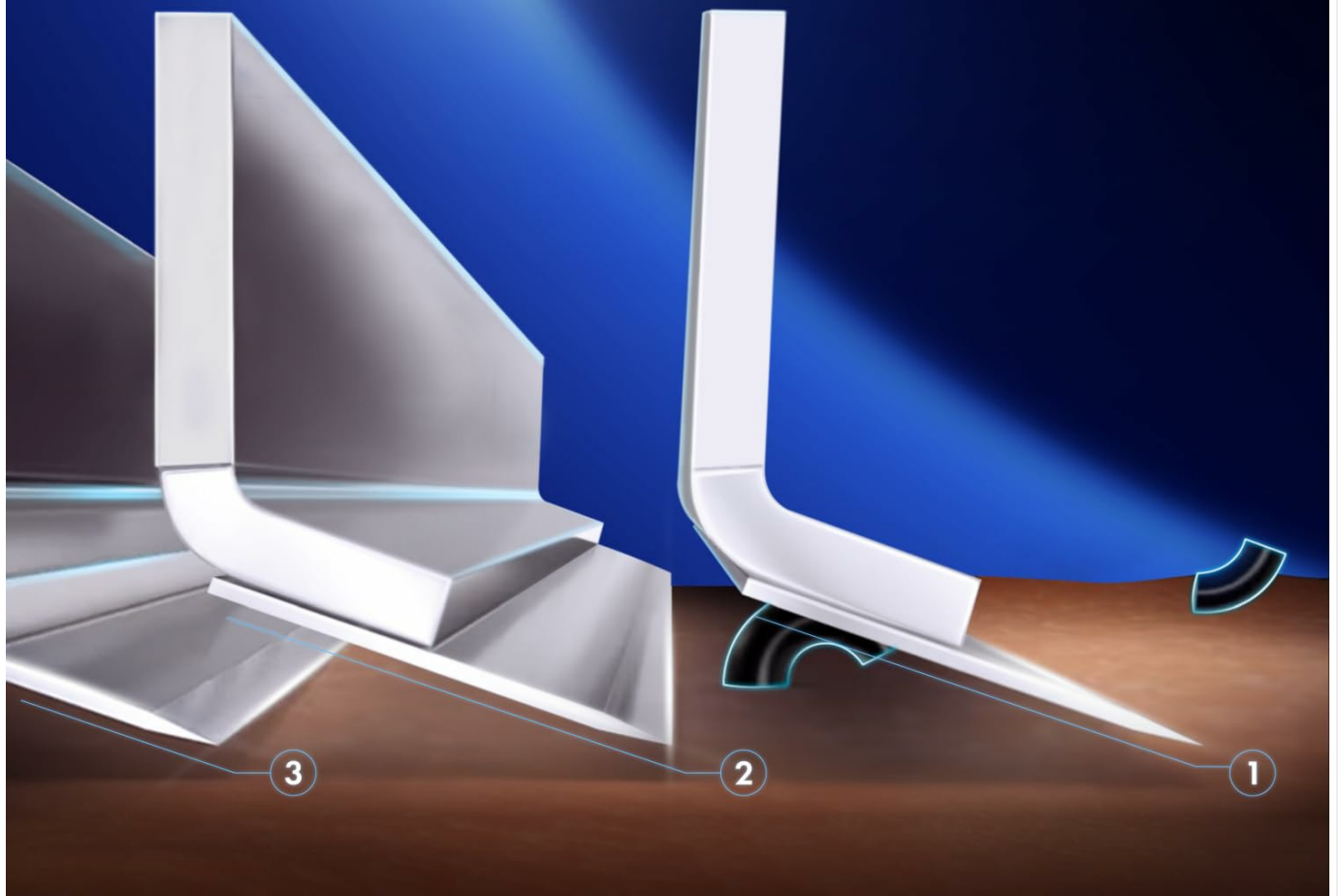


Image: Diagram illustrating key features including Comfort Boost Lubrastrip, Skin Adaptive Technology, 3D Flexball, 15 comfortable shaves, and 3 Anti-friction Blades.

## SETUP AND FIRST USE

---

The Gillette Mach3 Turbo razor is ready for use right out of the package. Ensure you are at least 18 years of age before using this product.

### Unpacking:

- Carefully remove the razor from its packaging.
- Inspect the razor and blade for any visible damage.



Image: Illustration showing two possible packaging designs for the Gillette Mach3 Turbo, indicating that the product may come in either package.

## OPERATING INSTRUCTIONS

For optimal shaving results and comfort, follow these steps:

1. **Prepare your skin:** Wet your face with warm water to soften the hair. Apply a generous amount of Gillette shaving gel or foam to create a rich lather.
2. **Shave with Mach3 Turbo:** Hold the razor with a comfortable grip. Shave with light, gentle strokes in the direction of hair growth. The Flexball technology allows the razor to pivot and maintain contact with your skin's contours, reducing the need for excessive pressure.
3. **Rinse and Refresh:** After shaving, rinse your face thoroughly with cool water to remove any remaining lather and hair. For best results, apply Gillette After Shave Lotion to soothe and moisturize your skin.



# 3 STEPS TO A GREAT SHAVE

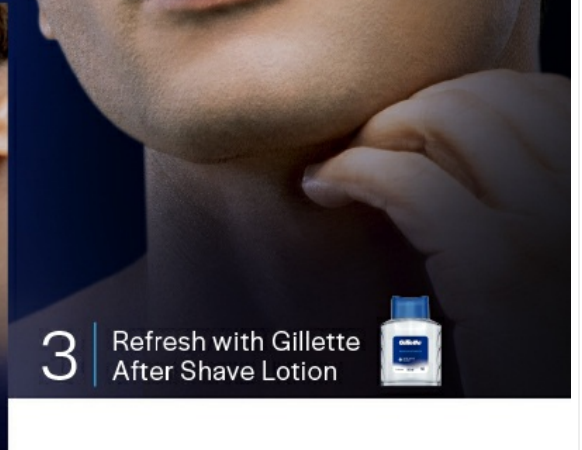


Image: Visual guide demonstrating the three steps for a great shave: 1. Lather with Gillette Shaving Gel, 2. Shave with Gillette Mach3 Charcoal, 3. Refresh with Gillette After Shave Lotion.

# NO CUTS

Blades adapt to  
every curve of your face

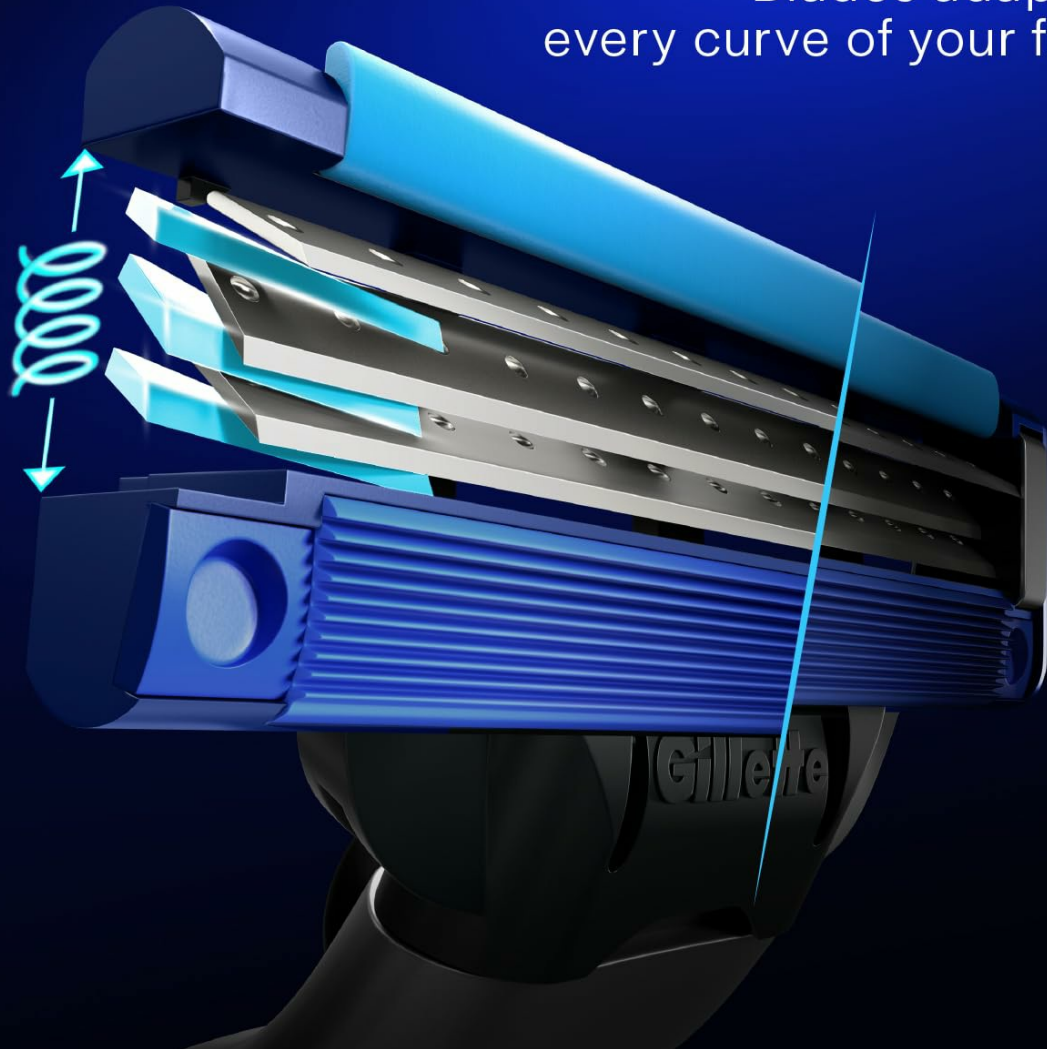


Image: Illustration highlighting "One Stroke Comfort," showing how the 3-bladed system works efficiently with a single stroke.

# 3D FLEXBALL

moves in every direction to  
reach tricky corners

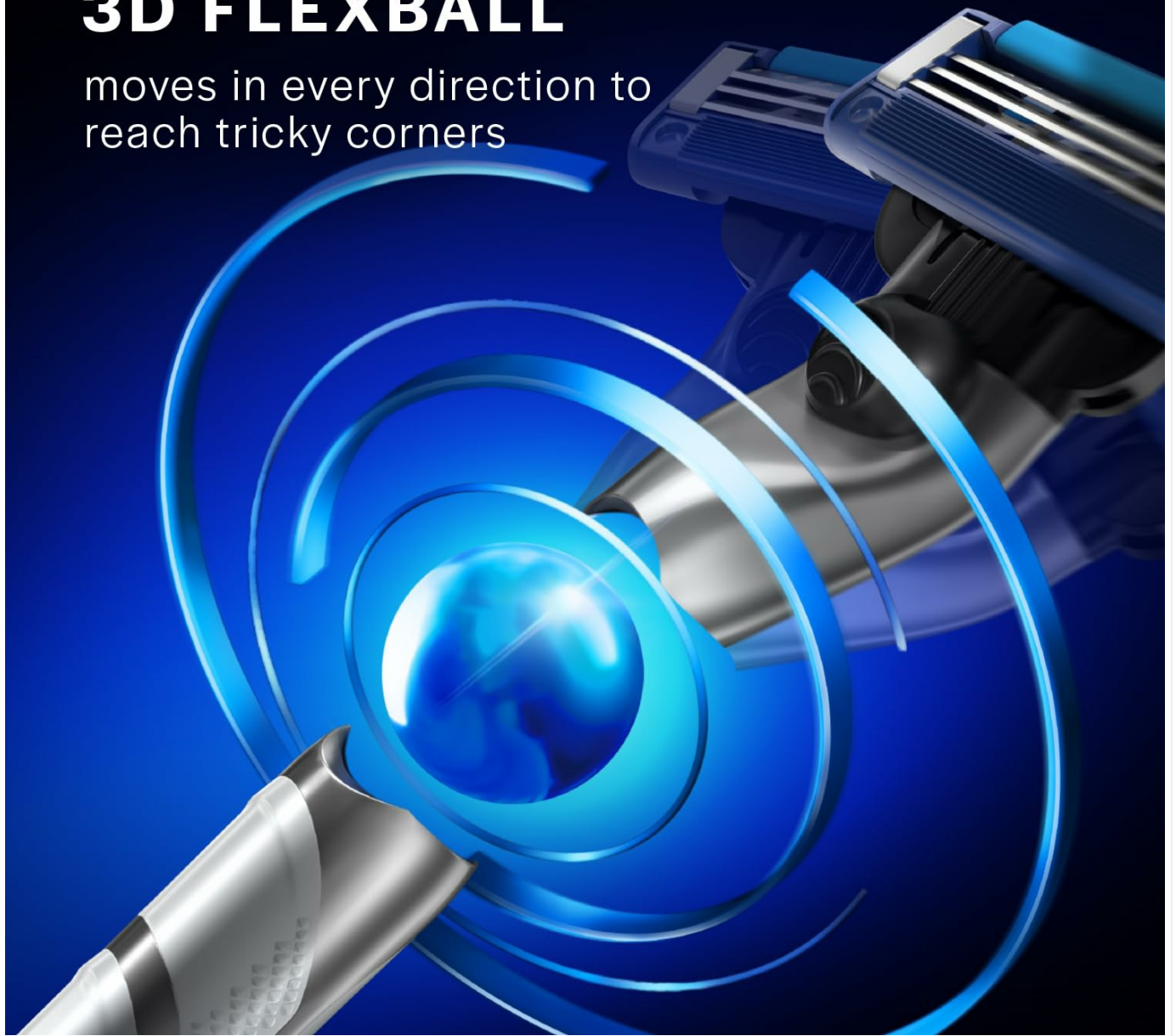


Image: Diagram illustrating how the blades adapt to every curve of the face, minimizing cuts and ensuring a smooth shave.

# RELOAD

When the strip  
turns white

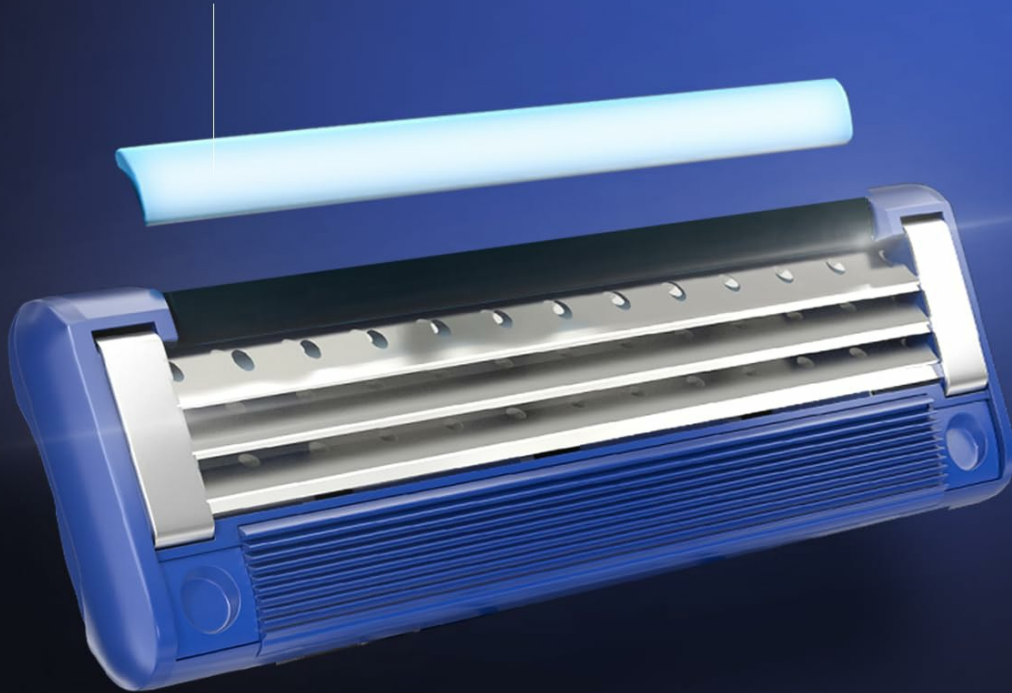


Image: Visual representation of the 3D Flexball technology, showing its ability to move in every direction to reach tricky corners of the face.

## MAINTENANCE

---

Proper maintenance ensures the longevity and performance of your Gillette Mach3 Turbo razor.

### Cleaning the Razor:

- After each stroke, rinse the blades under running water to clear away hair and shaving cream.
- Do not tap the razor against the sink or wipe the blades, as this can damage the precision components.

### Replacing the Blade:

The lubricating strip on the blade head will fade from blue to white over time, indicating that the blade is no longer providing optimal performance and should be replaced.



# WORLD'S #1

3 Bladed Razor\*



Image: Close-up of a razor cartridge showing the lubricating strip and an arrow pointing to "RELOAD When the strip turns white," indicating when to replace the blade.

To replace the blade:

1. Press the release button on the back of the razor handle to detach the used cartridge.
2. Align a new Gillette Mach3 Turbo cartridge with the handle and push until it clicks into place.

## TROUBLESHOOTING

| Problem                            | Possible Cause                | Solution  |
|------------------------------------|-------------------------------|---|
| Razor pulling hair or feeling dull | Blade is worn out or clogged. | Rinse the blade thoroughly. If the lubricating strip has turned white, replace the blade cartridge. |

| Problem                    | Possible Cause   | Solution   |
|----------------------------|--|--|
| Skin irritation or nicks   | Insufficient lather, dry shaving, or applying too much pressure. | Ensure skin is well-hydrated and use ample shaving gel/foam. Shave with light, gentle strokes. Consider replacing the blade if it's old. |
| Razor not gliding smoothly | Lubricating strip is depleted.                                   | Replace the blade cartridge.   |

### SPECIFICATIONS

| Feature                    | Detail                                 |
|----------------------------|--|
| Brand                      | Gillette                               |
| Model Number               | 80702925                               |
| Number of Blades           | 3                                      |
| Special Features           | Flexball Technology, Lubricating Strip |
| Skin Type Compatibility    | All Skin Types                         |
| Country of Origin          | Vietnam                                |
| Item Weight                | 38 g                                   |
| Product Dimensions (LxWxH) | 15 x 1.9 x 20 cm                       |
| UPC                        | 4987176286871                          |


| GUARD                   | NORMAL RAZOR<br>(3 BLADES) | <div>  </div> |
|-------------------------|----------------------------|---|
| 1 Blade _____ ★         | 3 Blades _____ ★★          | 3 Anti-friction Blades _____ ★★★★★  |
| No Blade Support ____ ★ | No Blade Support ____ ★    | Skin Adaptive Technology ____ ★★★★★   |
| No lubrastrip _____ ★   | Normal Strip _____ ★★      | Comfort Boost Lubrastrip ____ ★★★★★   |
| Plastic comb _____ ★★   | Hard fins _____ ★★         | Soft Microfins _____ ★★★★★  |
| Normal pivot _____ ★★   | Center pivot _____ ★★      | Dynamic Pivot _____ ★★★★★   |
| Plastic handle _____ ★  | Plastic handle _____ ★     | Ergonomic Metallic Handle _ ★★★★★   |
| 5-7 Shaves _____ ★      | 9-11 Shaves _____ ★★       | 15 Shaves _____ ★★★★★   |

Image: Comparison table detailing features of Guard, Normal Razor (3 Blades), and Gillette Mach3 Turbo, highlighting the superior features of the Mach3 Turbo.

WARRANTY AND SUPPORT





Gillette products are manufactured to high-quality standards. For any concerns regarding your Gillette Mach3 Turbo razor, please contact Gillette customer service.

While specific warranty details are not provided in this manual, Gillette stands by the quality of its products. Please refer to the official Gillette website or product packaging for the most current warranty information and customer support contacts. For further assistance, visit the official [Gillette website](#).

© 2024 Gillette. All rights reserved.

This manual is for informational purposes only. Product specifications are subject to change without notice.

Related Documents - 80702925

|   |   |
|---|---|
|   | <p><a href="#">How to Shave Your Face: A Guide to Men's Shaving</a></p> <p>A comprehensive guide to achieving a smooth, comfortable shave with expert tips on hydration, shaving cream application, blade care, shaving techniques, and post-shave care for men, featuring Gillette products.</p>           |
|  | <p><a href="#">Gillette Fusion ProGlide Styler: Beard Grooming Instructions for Four Styles</a></p> <p>Learn how to achieve four distinct beard styles – Anchor Beard, Semi-Kempt Scruff, 5 O'Clock Shadow, and The Chevron – with step-by-step instructions using the Gillette Fusion ProGlide Styler.</p> |
|  | <p><a href="#">Gillette Razor and Blade Compatibility Guide   FAQs &amp; Tips</a></p> <p>Find answers to common questions about Gillette razors and blades, including compatibility charts, power razor features, subscription services, recycling, and shaving tips.</p>                                   |
|  | <p><a href="#">Guide d'utilisation et instructions de sécurité du rasoir MÜHLE R44M3</a></p> <p>Guide détaillé pour le rasoir MÜHLE R44M3, couvrant la présentation, l'utilisation, les consignes de sécurité et l'entretien. Compatible avec les lames Gillette Mach3.</p>                                 |

