

Tribit FlyBuds 3 Black+Pink

Tribit FlyBuds 3 User Manual

MODEL: FLYBUDS 3 BLACK+PINK

Introduction

Thank you for choosing the Tribit FlyBuds 3 True Wireless Earbuds. This manual provides detailed instructions on how to set up, operate, maintain, and troubleshoot your earbuds to ensure optimal performance and longevity. Please read this manual carefully before using the product.

Package Contents

Please check the package for the following items:

- Tribit FlyBuds 3 True Wireless Earbuds (L/R)
- Charging Case
- USB-C Charging Cable
- Multiple Sizes of Eartips (S/M/L)
- User Manual

Product Overview



Figure 1: Tribit FlyBuds 3 Earbuds and Charging Case. This image shows the pink charging case open with one earbud inside and the other earbud outside, displaying its design.



Figure 2: Tribit FlyBuds 3 Charging Case Controls. This image highlights the multi-function button on the charging case, indicating its uses for battery voltage check, re-pairing, and power output.

The Tribit FlyBuds 3 consist of two wireless earbuds and a portable charging case. The charging case not only protects and charges the earbuds but also functions as a power bank for other devices.

- **Earbuds:** Each earbud features a touch control area for managing playback, calls, and voice assistant.
- **Charging Case:** Equipped with LED indicators for battery status and a multi-function button for various operations including pairing and power output.

Setup

1. Charging the Earbuds and Case

Before first use, fully charge the earbuds and the charging case.

- **Charging the Case:** Connect the USB-C charging cable to the charging port on the case and a power source. The LED indicators on the case will show the charging progress.
- **Charging the Earbuds:** Place the earbuds into the charging case. They will automatically begin charging. The case LEDs will indicate the earbuds' charging status.



Figure 3: Long-lasting Battery. This image shows the earbuds inside the charging case, emphasizing the 100 hours of cycle playtime, 20 times recharge capability, and 5 hours of music playtime per charge.

The Tribit FlyBuds 3 offer up to 5 hours of music playback per charge, and the charging case provides an additional 100 hours of playtime, allowing for multiple recharges on the go.

2. Using the Charging Case as a Power Bank

The charging case can also serve as a portable power bank for your smartphone or other small devices.

- Connect your device to the USB-A output port on the charging case using an appropriate cable.
- Press the multi-function button on the case to initiate charging for your connected device.



Figure 4: Portable Power Bank Feature. This image illustrates the Tribit FlyBuds 3 charging case connected via a cable to a smartphone, demonstrating its capability to charge other devices.

3. Pairing with Your Device

The FlyBuds 3 feature one-step pairing for convenience.

- **Initial Pairing:** Open the charging case. The earbuds will automatically enter pairing mode and connect to the last paired device. If no device is found, they will enter discovery mode.
- **Connecting to a New Device:** With the earbuds in the case and the lid open, press and hold the multi-function button on the charging case for 10 seconds until the LED indicators flash, indicating re-pairing mode. Then, select "Tribit FlyBuds 3" from your device's Bluetooth list.

Operating

1. Wearing the Earbuds

For optimal sound quality and comfort, choose the eartips that best fit your ears. Insert the earbuds into your ear canal and gently twist them to secure a snug fit.

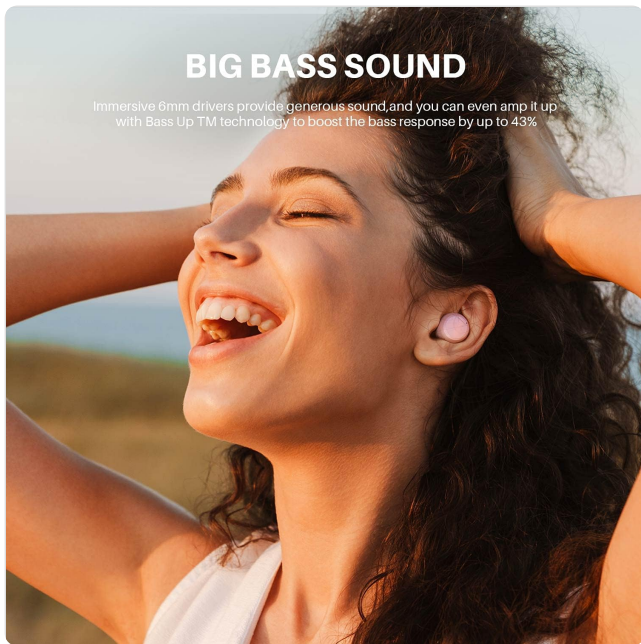


Figure 5: Earbud in Ear. This image shows a person wearing one of the pink Tribit FlyBuds 3 earbuds, demonstrating its discreet and comfortable fit.

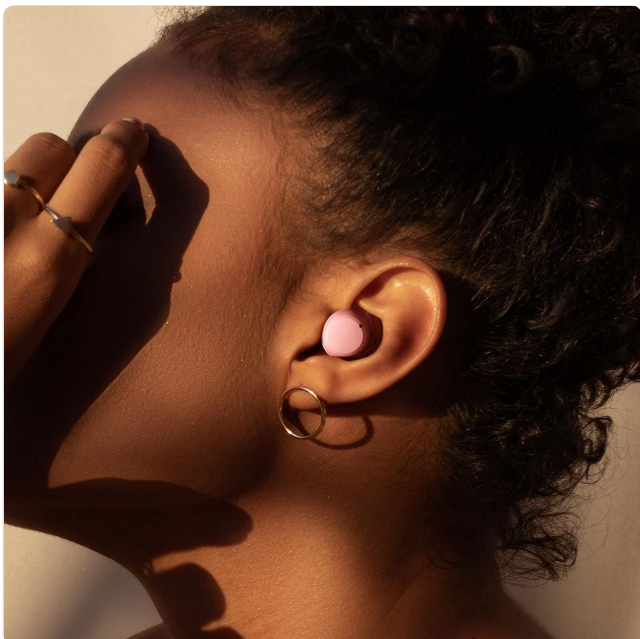


Figure 6: Close-up of Earbud Fit. A detailed view of the Tribit FlyBuds 3 earbud properly seated in a person's ear, highlighting

2. Touch Controls

The Tribit FlyBuds 3 utilize touch controls for various functions. The touch control area is located on the outer surface of each earbud.

Action	Function
Single Tap (L/R)	Play/Pause music, Answer/End call
Double Tap (Right Earbud)	Next Track
Double Tap (Left Earbud)	Previous Track
Triple Tap (Right Earbud)	Volume Up
Triple Tap (Left Earbud)	Volume Down
Press and Hold (2s)	Reject Call, Activate Voice Assistant

Maintenance

Proper maintenance ensures the longevity and performance of your Tribit FlyBuds 3.

- **Cleaning:** Regularly clean the earbuds and charging case with a soft, dry, lint-free cloth. Do not use harsh chemicals or abrasive materials.
- **Eartips:** Remove and clean the eartips with water and mild soap if necessary. Ensure they are completely dry before reattaching.
- **Charging Contacts:** Periodically clean the charging contacts on both the earbuds and inside the case with a dry cotton swab to ensure proper charging.
- **Water Resistance:** The FlyBuds 3 boast an IPX8 waterproof rating, meaning they are protected against prolonged immersion in water. However, it is recommended to dry them thoroughly after exposure to water before placing them back in the charging case to prevent damage to the charging contacts.
- **Storage:** When not in use, store the earbuds in their charging case to protect them and keep them charged. Store in a cool, dry place away from extreme temperatures.

Troubleshooting

If you encounter issues with your Tribit FlyBuds 3, try the following solutions:

- **Earbuds not pairing:**
 - Ensure both earbuds are charged.
 - Place both earbuds back into the charging case, close the lid, and then open it again to re-initiate pairing.
 - Forget "Tribit FlyBuds 3" from your device's Bluetooth settings and attempt to re-pair.
 - Perform a factory reset (see below).
- **Only one earbud working:**
 - Ensure both earbuds are charged.
 - Place both earbuds back into the charging case and close the lid for 5 seconds, then open it again.
 - Clean the charging contacts on both earbuds and inside the case.

- **No sound or low volume:**
 - Increase the volume on both your device and the earbuds.
 - Ensure the earbuds are properly connected to your device.
 - Try a different audio source or application.
- **Charging issues:**
 - Ensure the charging cable is securely connected.
 - Try a different charging cable or power adapter.
 - Clean the charging contacts on the earbuds and case.

Factory Reset

If the above steps do not resolve the issue, you can perform a factory reset:

1. Place both earbuds into the charging case.
2. Press and hold the multi-function button on the charging case for 10 seconds until the LED indicators flash rapidly. This clears the pairing history.
3. Remove "Tribit FlyBuds 3" from your device's Bluetooth list.
4. Repeat the pairing process as described in the "Setup" section.

Specifications

Feature	Detail
Brand	Tribit
Model	FlyBuds 3
Connectivity Technology	Wireless (Bluetooth)
Form Factor	In Ear
Battery Life (Earbuds)	Up to 5 hours
Total Playtime (with Case)	Up to 100 hours
Water Resistance Level	IPX8 Waterproof
Control Method	Touch
Specific Uses For Product	Movies and Gaming

Warranty and Support

Tribit products are designed with quality and reliability in mind. For information regarding warranty coverage and customer support, please refer to the warranty card included in your product packaging or visit the official Tribit website. If you experience any issues not covered in this manual, please contact Tribit customer service for assistance.

Tribit Official Website: www.tribit.com

