

VILTROX 03258-GDE-2

VILTROX 24MM F1.8 Z Mount Full Frame Lens User Manual

Model: 03258-GDE-2

1. INTRODUCTION

The VILTROX 24MM F1.8 Z Mount Full Frame Lens is an autofocus wide-angle prime lens designed for Nikon Z series mirrorless cameras. It offers a bright F1.8 aperture, suitable for various photographic applications including landscape, astrophotography, and portraits. This manual provides essential information for setting up, operating, and maintaining your lens.

2. KEY FEATURES

- **Autofocus Wide-Angle Prime Lens:** Designed for Nikon full-frame mirrorless cameras.
- **Lens IS Stabilization Support:** Enhances stability for sharper images.
- **EXIF Information Transmission:** Communicates lens data to the camera.
- **USB Upgrade Port:** Allows for future firmware updates.
- **"STM+Lead screw" Stepper Motor:** Provides quiet and smooth autofocus for both stills and video.
- **Lightweight Focusing Assembly:** Contributes to a compact design and reduced breathing effect during focus.
- **High Image Quality and Mobility:** Suitable for professional video and vlog creation.
- **0.3m Close-Up Shooting Performance:** Enables soft and natural bokeh effects.

3. SETUP

3.1 Attaching the Lens

1. Ensure your camera is turned off.
2. Align the mounting index (red dot) on the lens with the mounting index on your Nikon Z-mount camera body.
3. Gently insert the lens into the camera's lens mount.
4. Rotate the lens clockwise until it clicks into place, indicating it is securely locked.

Product Size

Size: $\Phi 70\text{mm} \times 86.7\text{mm}$

Weight: 370g



Light weight, can be operated with one hand



Type-C USB interface
Upgrade the firmware of the lens



HD nano multi-layer coating
Effectively reduce ghosting and flare



Lightweight design
Internal focus system to reduce effective focal length

The VILTROX 24MM F1.8 Z lens attached to a Nikon Z camera body, showing its compact profile.

3.2 Detaching the Lens

1. Turn off your camera.
2. Press and hold the lens release button on your camera body.
3. Rotate the lens counter-clockwise until it detaches from the camera body.
4. Place the front and rear lens caps on the lens and camera body immediately to protect them from dust and damage.

3.3 Firmware Updates

The lens features a USB-C interface for firmware updates. Periodically check the VILTROX official website for the latest firmware versions to ensure optimal performance and compatibility with new camera models.

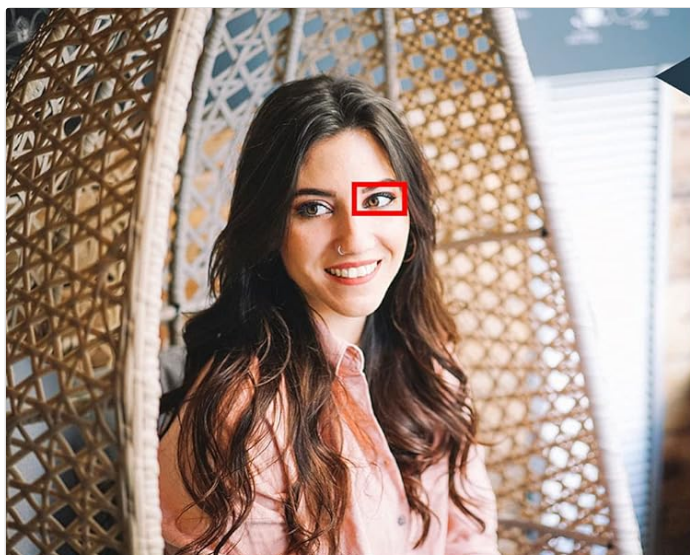


The USB-C port on the lens mount for firmware updates.

4. OPERATING THE LENS

4.1 Autofocus (AF)

The VILTROX 24MM F1.8 Z lens utilizes an STM+Lead screw stepper motor for fast, quiet, and smooth autofocus. This is beneficial for both still photography and video recording, minimizing distracting noise during operation. The lens supports eye-detection autofocus on compatible Nikon Z cameras.



Support Eye-Detection Autofocus



Linear Adjustable Aperture Ring



STM+ LEAD SCREW



Killer Lens For Astrophotography

Eye-detection autofocus is supported by the lens for precise subject tracking.

4.2 Manual Focus (MF)

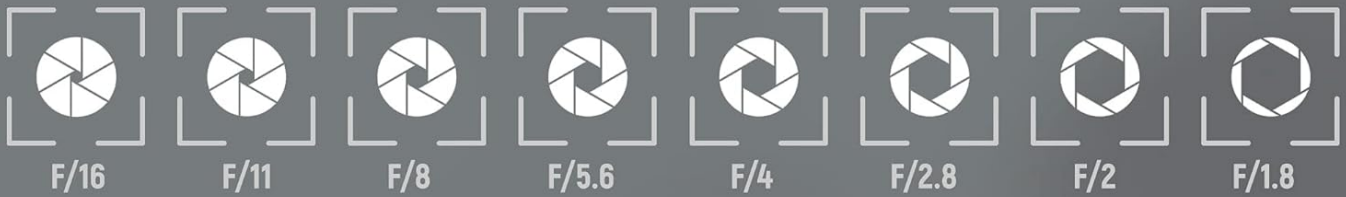
For precise control, switch your camera to manual focus mode. The lens features a smooth focus ring for manual adjustments. The focus range is 0.3m to infinity.

4.3 Aperture Control

The lens has a linear adjustable aperture ring. You can set the aperture from F1.8 to F16. The smooth, clickless aperture ring is particularly useful for video recording, allowing for seamless exposure adjustments without audible clicks.

Soft and Natural Out-of-focus Blur

F1.8 large aperture, high sharpness, excellent resolution



Visual representation of aperture settings from F/1.8 to F/16, demonstrating depth of field control.

4.4 Lens Hood

Attach the included lens hood to reduce flare and ghosting, especially when shooting in bright light or with light sources near the edge of the frame. Align the hood with the lens and twist until it locks into place.

5. MAINTENANCE

5.1 Cleaning the Lens

- Use a blower brush to remove dust and loose particles from the lens surface.
- For smudges or fingerprints, use a clean microfiber cloth specifically designed for optics, along with a small amount of lens cleaning solution.
- Avoid touching the glass elements directly with your fingers.
- Do not use harsh chemicals or abrasive materials, as these can damage the lens coatings.

5.2 Storage

- When not in use, always attach the front and rear lens caps.
- Store the lens in a dry, cool place, away from direct sunlight and extreme temperatures.
- Consider using a dehumidifying cabinet or silica gel packets to prevent mold growth, especially in humid environments.

6. TROUBLESHOOTING

6.1 Autofocus Issues

If autofocus stops working, try detaching the lens and reattaching it to the camera. Ensure the lens firmware is up to date. Check your camera's autofocus settings to confirm they are configured correctly for the shooting situation.

6.2 Vignetting and Distortion

At wider apertures (e.g., F1.8), some vignetting (darkening of image corners) and distortion may be noticeable. Many modern cameras offer in-camera lens corrections that can mitigate these effects. Alternatively, post-processing software can be used to correct vignetting and distortion.

6.3 Softness in Corners

Corner sharpness may improve by stopping down the aperture (e.g., to F2.8 or F4). This is a common characteristic of wide-angle lenses, especially at their widest apertures.

7. SPECIFICATIONS

Feature	Detail
Brand	VILTROX
Model Number	03258-GDE-2
Focal Length	24mm
Maximum Aperture	F1.8
Minimum Aperture	F16
Lens Type	Wide Angle Prime Lens
Compatible Mountings	Nikon Z
Focus Method	Auto Focus (STM+Lead screw) / Manual Focus
Lens Elements	11 elements in 9 groups
Aperture Blades	9
Focus Range	0.3m ~ ∞
Filter Size	Φ55mm
Weight	370g (1.34 pounds)

Product Dimensions	6.69 x 5.12 x 5.12 inches
USB Port	Type-C (for firmware updates)



Wide angle and large aperture No fear of low light

Clearer photos can be taken in low light, suitable for a wide range of scenes



Portrait



Scenery



Architecture



Night Scenes



travel



Detailed product information and contents of the packing list.

8. WARRANTY INFORMATION

VILTROX products typically come with a manufacturer's warranty. Please refer to the warranty card included in your product packaging or visit the official VILTROX website for detailed warranty terms and conditions. Keep your proof of purchase for warranty claims.

9. CUSTOMER SUPPORT

For technical assistance, product inquiries, or service requests, please contact VILTROX customer support through their

official website or the contact information provided in your product documentation. You can also visit the [VILTROX Official Store on Amazon](#) for more information.

10. PRODUCT VIDEOS

Viltrox AF 24mm f/1.8 Z lens review

Your browser does not support the video tag.

This video provides a detailed review of the Viltrox AF 24mm f/1.8 Z lens, covering its features, performance, and image quality. It offers insights into the lens's build, autofocus capabilities, and optical characteristics.

