

## Bisofice L1

# Bisofice Poooli Mini Thermal Photo Printer L1 User Manual

Model: L1

## 1. INTRODUCTION

Thank you for choosing the Bisofice Poooli Mini Thermal Photo Printer L1. This compact and portable printer allows you to print photos, labels, notes, and more directly from your smartphone via Bluetooth. This manual provides essential information for safe and effective use, including setup, operation, maintenance, and troubleshooting.

## 2. SAFETY INFORMATION

Please read all safety instructions before using the device to prevent injury or damage.

- Keep the printer away from water and high humidity.
- Do not expose the printer to extreme temperatures or direct sunlight.
- Avoid dropping or subjecting the printer to strong impacts.
- Use only the specified thermal paper. Other paper types may damage the print head.
- Do not attempt to disassemble or repair the printer yourself. Contact customer support for assistance.
- Keep out of reach of children.
- Charge the printer using the provided USB cable and a compatible power adapter (not included).

## 3. PACKAGE CONTENTS

Verify that all items are present in your package:

- Bisofice Poooli Mini Thermal Photo Printer L1
- Thermal Paper Rolls (7 rolls total, including one pre-installed)
- USB Charging Cable
- Quick Start Guide



Image: Contents of the Bisofice Poooli L1 package, including the printer, seven rolls of thermal paper, a USB charging cable, and a quick start guide.

## 4. PRODUCT OVERVIEW

Familiarize yourself with the components of your Poooli L1 printer.



## Unique Appearance

Cute parrot shape, beautiful and attractive.



## Premium Print Head

Long printing life and good printing effects.



## Integrated Cutter

Safe and convenient to tear off thermal paper.



## Slide to Open

Gently slide to open the cover for easily removing and changing thermal paper.

Image: Key features of the Poooli L1 printer, highlighting its unique parrot design, high-quality print head, built-in paper cutter, and easy-open cover for paper loading.

- **Power Button:** Located on the top surface, typically indicated by a circular icon.
- **Paper Exit Slot:** Where printed thermal paper emerges.
- **Integrated Cutter:** A safe and convenient mechanism for tearing off printed paper.
- **USB Charging Port:** For connecting the USB cable to charge the device.
- **Indicator Light:** Provides status information (e.g., charging, connected, printing).
- **Parrot Beak Design:** A decorative and functional element, featuring a built-in magnet for attaching notes or securing the printer to metallic surfaces.

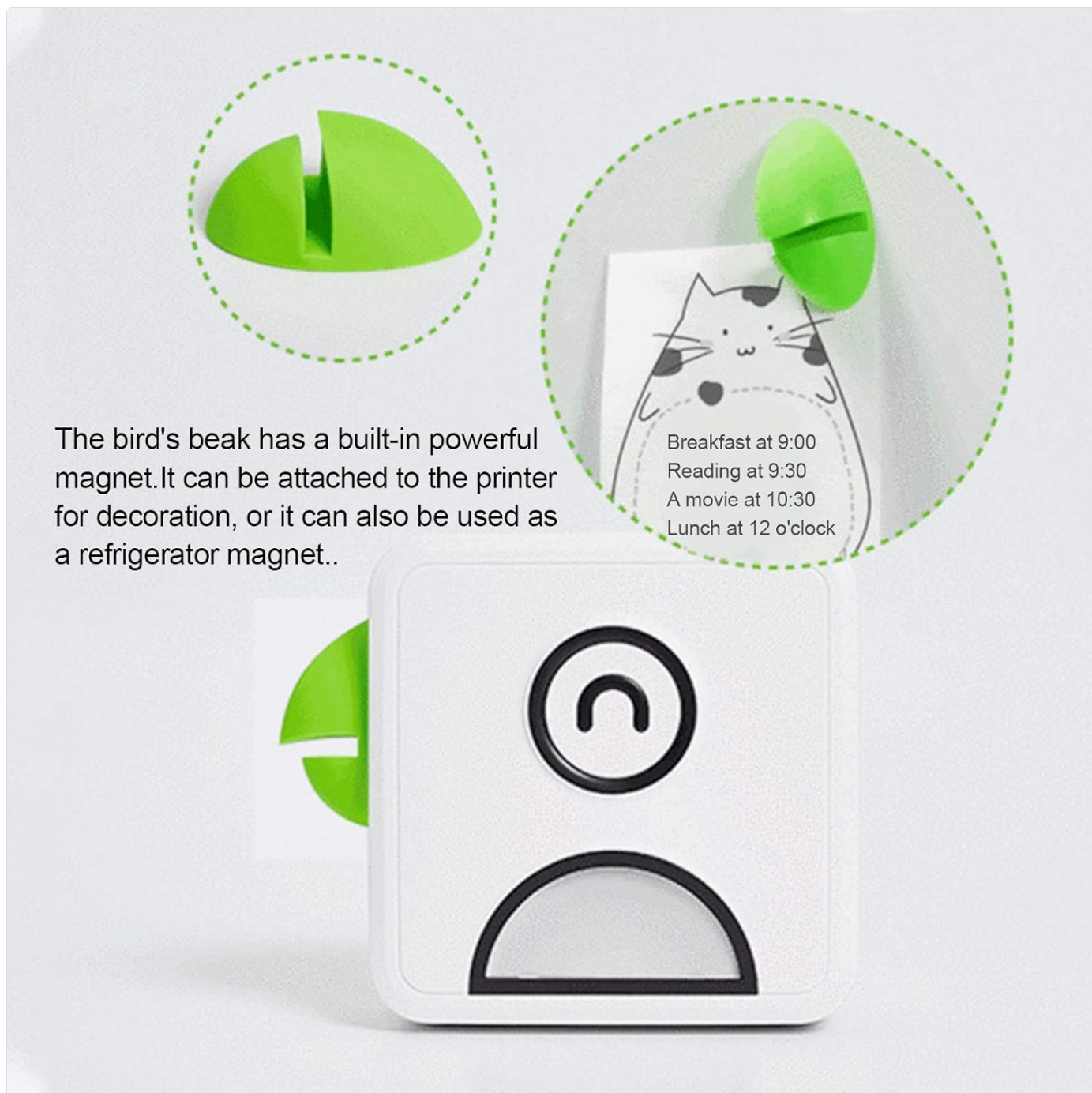


Image: The parrot beak of the printer contains a magnet, allowing it to hold notes or be attached to magnetic surfaces like a refrigerator.

## 5. SETUP

### 5.1 Charging the Printer

Before first use, fully charge the printer. Connect the provided USB cable to the printer's charging port and the other end to a USB power adapter (e.g., phone charger) or a computer's USB port. The indicator light will show charging status (e.g., red for charging, green for fully charged).

### 5.2 Loading Thermal Paper

1. Gently slide the printer cover to open it.
2. Insert a roll of thermal paper into the compartment, ensuring the paper feeds out from the top.
3. Pull a small length of paper out beyond the cutter.
4. Close the printer cover firmly until it clicks into place.



### 5.3 App Installation

The Bisofice Pooli L1 printer requires a dedicated mobile application for operation. Search for "Pooli" in your smartphone's app store (Google Play Store for Android, Apple App Store for iOS) and install it. The app is compatible with Android 5.0 or above and iOS 10 or above.

### 5.4 Bluetooth Pairing

1. Ensure the printer is charged and powered on. The indicator light may flash, indicating it's ready for pairing.
2. Enable Bluetooth on your smartphone.
3. Open the "Pooli" application.
4. Within the app, navigate to the device connection or pairing section.
5. Select the "Pooli L1" or a similar device name from the list of available Bluetooth devices.
6. Once successfully paired, the printer's indicator light will typically turn solid blue or green, and the app will confirm the connection.



Image: The Pooli L1 printer connecting wirelessly via Bluetooth 4.0 to a smartphone, ready for printing.

## 6. OPERATING INSTRUCTIONS

The Pooli app provides various functions for printing. Ensure your printer is connected via Bluetooth before proceeding.

### 6.1 Printing Photos and Images

1. Open the Pooli app and select the "Photo Print" or "Image" option.
2. Choose an image from your phone's gallery.
3. Adjust the image as needed using the app's editing tools (e.g., filters, crop, rotate).
4. Tap the print icon to send the image to the printer.

### 6.2 Printing Text and Notes

The app supports printing various text-based content:

- **Messages/Notes:** Type or paste text directly into the app's note editor.
- **Lists:** Create to-do lists or shopping lists.
- **OCR Text Recognition:** Use the app to scan text from an image and print it.
- **Web Printing:** Enter a web address to print the content of a webpage.

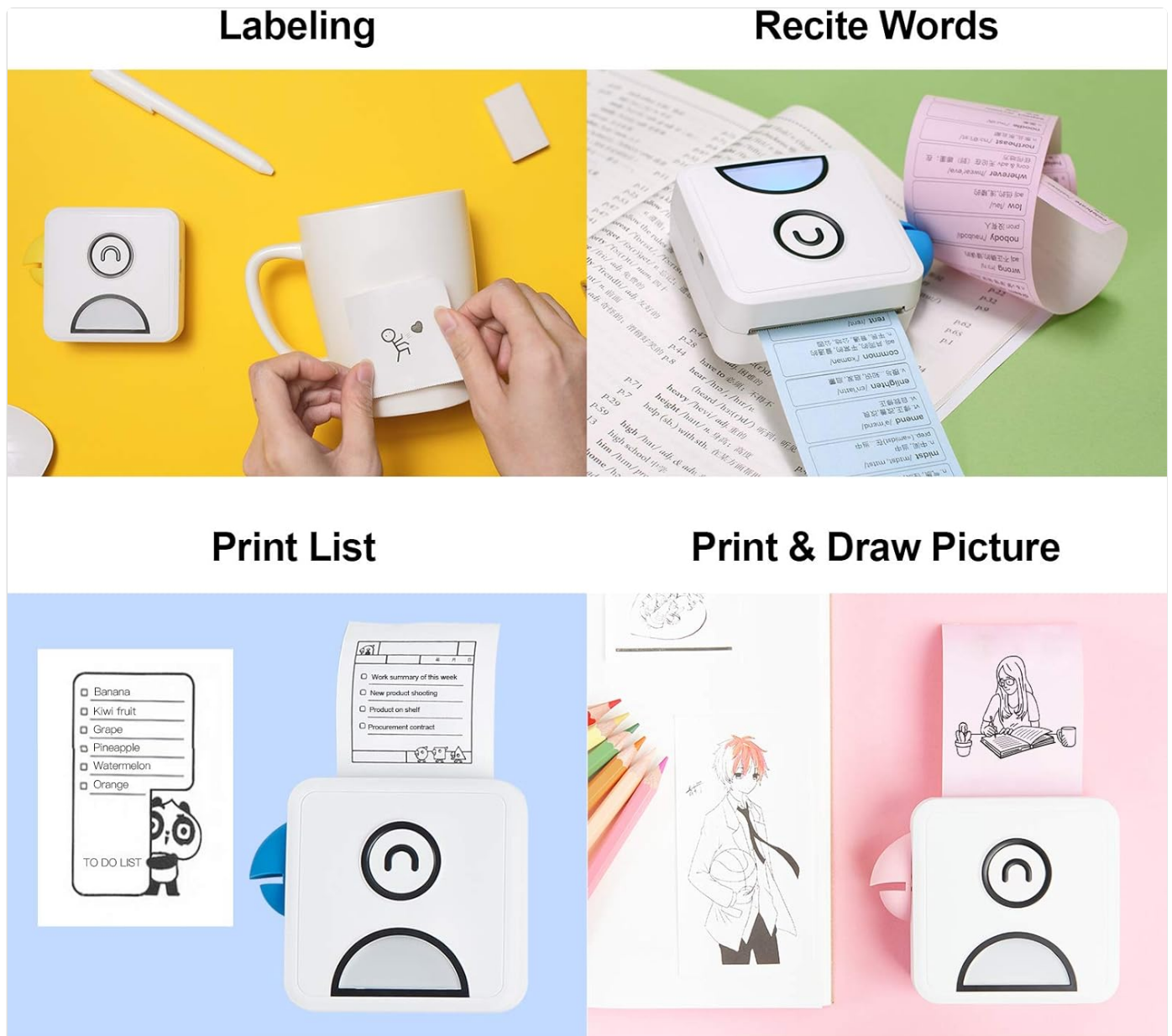


Image: Demonstrates various printing capabilities including labels, text, lists, and drawings.

# Web Printing

Enter the web address, find the print content, and print the whole page or the current screen content.



Image: Web printing feature, allowing users to print content directly from a web address.

## 6.3 Using App Features

The Poooli app offers a variety of templates, emojis, and themes to customize your prints. Explore the app's interface to discover all available options for creative and functional printing.

## 7. MAINTENANCE

### 7.1 Cleaning the Printer

To maintain optimal print quality and device longevity:

- Ensure the printer is powered off before cleaning.
- Use a soft, dry, lint-free cloth to wipe the exterior of the printer.
- If the print head appears dirty or print quality degrades, gently wipe the print head with a cotton swab lightly dampened with isopropyl alcohol. Allow it to dry completely before use.

- Do not use abrasive cleaners or solvents.

7.2 Replacing Thermal Paper

When the paper roll is depleted, follow the steps in section 5.2 "Loading Thermal Paper" to replace it with a new roll. Ensure you use thermal paper of the correct size (58mm width x 30mm diameter).



Image: Thermal paper rolls designed for long-lasting preservation of prints.

8. TROUBLESHOOTING

If you encounter issues with your printer, refer to the following common problems and solutions:

Problem	Possible Cause	Solution
Printer does not turn on.	Low battery or no charge.	Charge the printer fully using the USB cable.



Problem	Possible Cause	Solution
Cannot connect via Bluetooth.	Bluetooth is off on phone, printer is off, or not in pairing mode.	Ensure Bluetooth is enabled on your phone. Turn the printer off and on again. Re-attempt pairing through the Pooli app.
Poor print quality (faint, blank, or streaky prints).	Incorrect paper loading, low battery, dirty print head, or non-thermal paper.	Check if thermal paper is loaded correctly. Charge the printer. Clean the print head (see Section 7.1). Ensure you are using thermal paper.
Paper jam.	Improper paper loading or foreign object.	Open the cover, carefully remove any jammed paper, and re-load the paper correctly.
App not detecting printer.	App issue, Bluetooth connection lost.	Restart the Pooli app. Disconnect and re-pair the printer in your phone's Bluetooth settings and then in the app.

## 9. SPECIFICATIONS

Feature	Detail
Brand	Bisofice
Model Name	L1
Print Technology	Thermal
Printer Output	Monochrome (Black and White)
Resolution	200 DPI
Connectivity Technology	Bluetooth 4.0 (Wireless), USB (for charging)
Compatible Devices	Smartphones (Android 5.0+, iOS 10+)
Print Medium	Thermal Paper (Sticker, Label, Poster Paper)
Paper Roll Size	58mm (width) x 30mm (diameter)
Battery	1000 mAh (Built-in Lithium Battery)
Battery Energy Content	2 Watt Hours
Special Feature	Portable, Inkless Printing, Magnetic Design
Product Dimensions	Approx. 8.3 x 8.3 x 3.85 cm (3.3 x 3.3 x 1.5 inches)
Product Weight	Approx. 500 grams
Color	White with Green accent (as pictured)

# Pocket Thermal Printer

Compact and lightweight for printing anywhere and anytime.

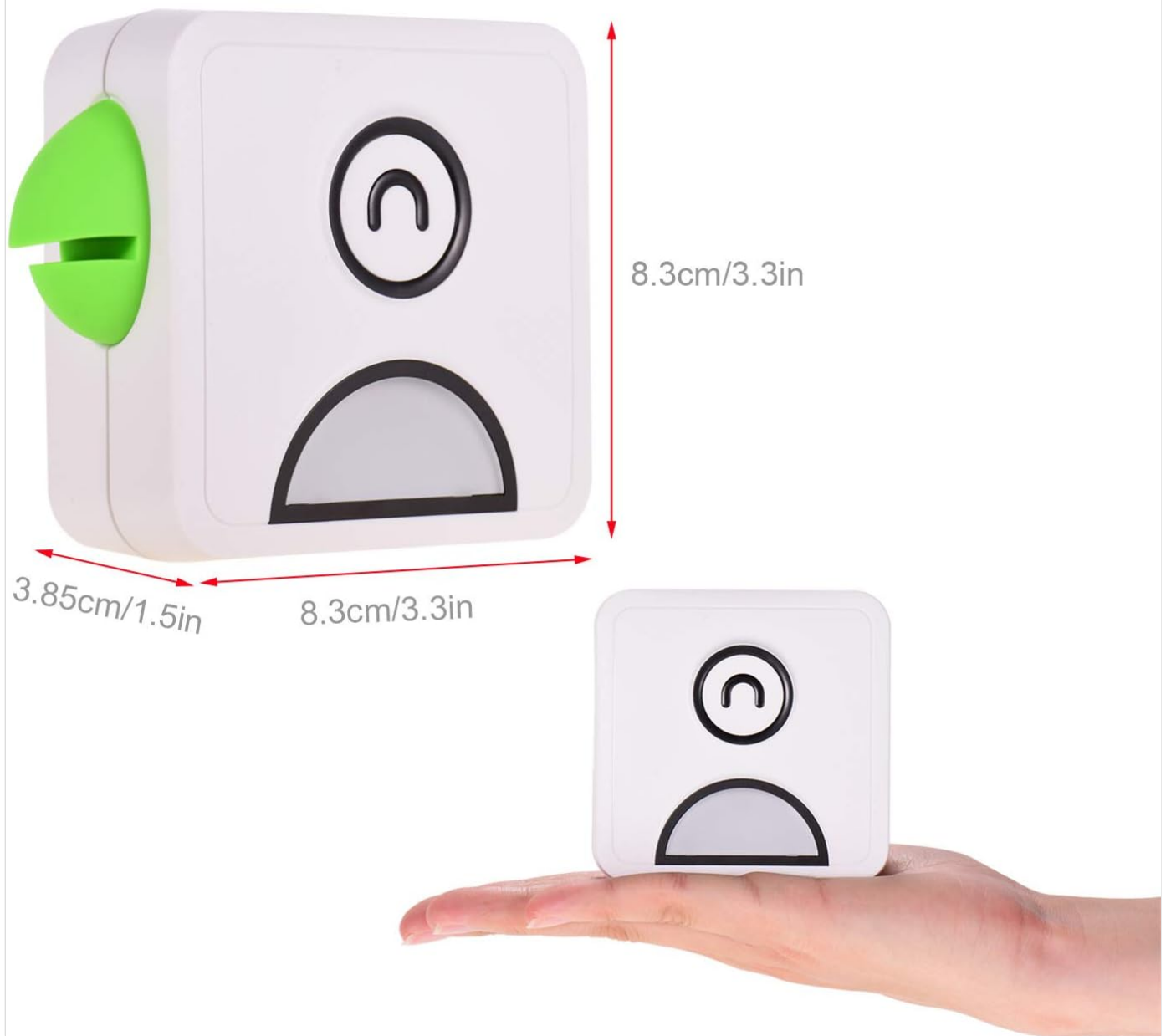


Image: The compact size of the Poooli L1 printer, demonstrating its portability.

## 10. WARRANTY AND SUPPORT

Specific warranty details are not provided in the product information. For warranty claims or technical support, please refer to the retailer's return policy or contact Bisofice customer service directly through their official website or the contact information provided with your purchase.



