



Manuals.plus /

› Brightup /

› Brightup Beard Trimmer User Manual

Brightup FK-8788T

Brightup Beard Trimmer for Men

MODEL: FK-8788T

User Manual

1. Safety Information

Please read all instructions carefully before using the Brightup Beard Trimmer. Keep this manual for future reference.

- Only use adapters that support 5V for charging.
- Keep the device out of reach of children.
- Do not disassemble the device. Refer to qualified personnel for repairs.
- Avoid extreme temperatures and direct sunlight.
- Ensure the charging port is dry before connecting the USB cable.

2. Package Contents

Your Brightup Beard Trimmer kit includes the following items:

- 1 x Brightup Beard Trimmer Handle
- 6 x Trimmer Heads (Full-size trimmer, Precision trimmer, Design trimmer, Body shaver, Nose/Ear trimmer, Micro shaver)
- 6 x Hair Trimmer Combs (various lengths)
- 1 x Stand Base
- 1 x Leather Storage Bag
- 1 x USB Charging Cable
- 1 x Cleaning Brush
- 1 x Comb

LI-ION POWERD

CONVENIENT AND SAFE USB CHARGING



Laptop



USB Outlet



USB Charger



Car Charger



Power Bank

120
MINS
WORK TIMES

1.8
HOUR
FULL CHARGE

Adapter
Only 5V

Usb Cable
100-240V

Image: The trimmer being charged via USB, illustrating various compatible power sources.

3.2 Attaching/Detaching Trimmer Heads

To change the trimmer head:

- Ensure the trimmer is turned off.
- Gently pull the currently attached head upwards to detach it from the main body.
- Align the desired trimmer head with the main body and push it down until it clicks securely into place.

SUPER WASHABLE CLIPPER

Easy Removable Quick Hygienic Cleaning



Image: The trimmer body with different detachable heads, demonstrating the modular design.

4. Operating Instructions

The Brightup Beard Trimmer is designed for versatile grooming across various body areas. It features two speed modes for different hair thicknesses.

4.1 Powering On/Off and Speed Modes

- Press the power button once to turn on the trimmer at the default speed (8000 RPM).
- Press the power button a second time to switch to the higher speed (10000 RPM), suitable for thicker hair.
- Press the power button a third time to turn off the trimmer.
- The device also has a 3-second long press lock design to prevent accidental activation.

4.2 Using Different Trimmer Heads

Select the appropriate trimmer head and comb for your desired grooming task:

- **Full-size Trimmer:** Ideal for general hair cutting and shaping. Use with adjustable combs (3mm, 6mm, 9mm, 12mm) for desired length.

- **Precision Trimmer:** For detailed styling, sharp lines, and intricate designs. Use with adjustable combs (1/2/3/4mm) for precise control.
- **Body Shaver:** Designed for smooth and comfortable shaving of body hair.
- **Nose & Ear Trimmer:** Safely removes unwanted hair from the nose and ears.
- **Micro Shaver:** For an ultra-close shave on smaller areas or for finishing touches.
- **Design Trimmer:** For creating specific patterns or sharp edges in hair.

MULTI GROOMING FOR BEARD BODY NOSE HAIR TRIMMER

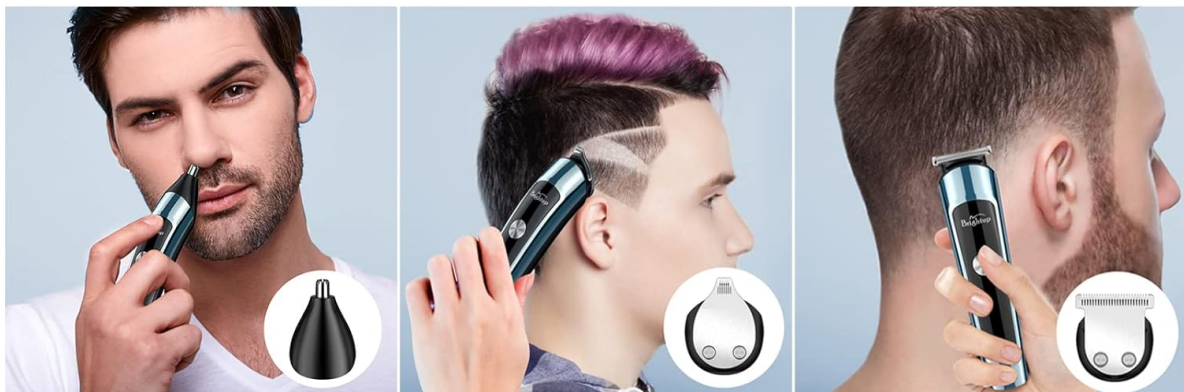
Functionality + Durability + Ergonomic



Precision Trimmer

Body Hair Trimmer

Nose & Ear Trimmer



Micro Shaver

Design Trimmer

Full Size Trimmer

Image: Demonstrates the versatility of the trimmer for beard, body, nose, and ear hair.

5. Maintenance and Cleaning

Regular cleaning ensures optimal performance and extends the lifespan of your trimmer.

5.1 Cleaning the Trimmer Heads

- The trimmer is IPX7 waterproof, allowing for whole-body washing.
- After each use, detach the trimmer head.
- Rinse the detached head under running water to remove hair and debris.
- Use the provided cleaning brush to remove any stubborn hair from the blades.
- Ensure the head is completely dry before reattaching it to the trimmer body.



Image: The trimmer being cleaned under running water, highlighting its waterproof feature.

5.2 Blade Sharpening

The stainless steel blades are self-sharpening, maintaining their sharpness over time. No manual sharpening is required.

6. Troubleshooting

If you encounter any issues with your Brightup Beard Trimmer, refer to the following common solutions:

Problem	Possible Cause	Solution
Trimmer does not turn on.	Low battery or device is locked.	Charge the trimmer fully. Press and hold the power button for 3 seconds to unlock.
Poor trimming performance.	Blades are clogged with hair or head is not properly attached.	Clean the trimmer head thoroughly. Ensure the head is securely attached.
Trimmer makes unusual noise.	Hair caught in the motor or internal issue.	Clean the device thoroughly. If the issue persists, contact customer support.

7. Specifications

- **Model Number:** FK-8788T
- **Brand:** Brightup
- **Power Source:** Rechargeable Lithium-ion Battery
- **Charging Time:** Approximately 1.8 hours
- **Run-time:** Up to 120 minutes
- **Waterproof Rating:** IPX7 (Whole Body Washable)
- **Speed Modes:** 8000 RPM (daily use), 10000 RPM (thicker hair)
- **Blade Material:** Stainless Steel
- **Product Dimensions:** 9.6 x 7.2 x 3 inches
- **Item Weight:** 1.9 Pounds
- **Color:** Blue
- **Country of Origin:** China

8. Warranty and Support

Brightup stands behind the quality of its products.

- **Warranty:** We provide a 1-year guarantee for the Brightup beard trimmer from the date of purchase.
- **Customer Service:** For any questions or concerns regarding your Brightup product, please do not hesitate to contact our customer service team directly.
- **Phone:** 001 (848) 256-9372