

BoxWave ClearTouch Crystal

BoxWave ClearTouch Crystal Screen Protector

INSTRUCTION MANUAL FOR TOGUARD CE35

1. Introduction

The BoxWave ClearTouch Crystal Screen Protector is designed to provide a protective layer for your TOGUARD CE35 device screen. This high-quality optical film offers 99% visual transparency, ensuring vibrant color display while shielding your screen from scratches and dust. This manual provides detailed instructions for proper installation, usage, and maintenance to ensure optimal performance and longevity of your screen protector.

2. Package Contents

Each BoxWave ClearTouch Crystal Screen Protector package includes the following items:

- Two (2) ClearTouch Crystal Screen Protectors
- One (1) ClearTouch Applicator Card
- One (1) Microfiber Cleaning Cloth

***ClearTouch** screen protector* *included accessories*



***Applicator
Card***



***Microfiber
Cleaning Cloth***



***Dust Removing
Sticker***

Image: Contents of the BoxWave ClearTouch Crystal Screen Protector package, showing the screen protectors, applicator card, and cleaning cloth.

3. Installation Guide

Follow these steps carefully for a bubble-free installation:

1. **Prepare Your Workspace:** Ensure you are in a clean, dust-free environment. Wash your hands thoroughly to avoid transferring oils to the screen or protector.
2. **Clean the Device Screen:** Use the included microfiber cleaning cloth to thoroughly clean the TOGUARD CE35 screen. Ensure all dust, smudges, and fingerprints are removed. For stubborn marks, a screen cleaner (not included) can be used, followed by drying with the microfiber cloth.
3. **Align the Protector:** Carefully peel back a small portion of the protective layer (usually labeled '1' or 'back') from one corner of the screen protector. Align the exposed edge of the screen protector with the corresponding edge of your device screen. Ensure precise alignment with all cutouts (e.g., camera, sensors) before proceeding.
4. **Apply the Protector:** Slowly and steadily peel back the remaining protective layer while simultaneously applying the screen protector to the device screen. Use the ClearTouch Applicator Card to gently smooth out any air bubbles as you go, pushing them towards the edges.
5. **Remove Top Layer:** Once the screen protector is fully applied, carefully peel off the top protective layer (usually labeled '2' or 'front').

6. **Final Smoothing:** Use the applicator card or the microfiber cloth to gently press down on the entire surface of the screen protector, ensuring all edges are adhered and any remaining small bubbles are pushed out.

Note: The special low-tack adhesive may take approximately 2 days of regular use to fully adhere around the edges, allowing any minor air gaps to clear out naturally.



Image: Visual representation of the screen protector's high definition clarity, maintaining vibrant colors.

4. Usage

Once installed, the ClearTouch Crystal Screen Protector functions as an invisible shield for your TOGUARD CE35 screen. It is designed to protect against scratches, dust, and minor impacts without compromising touch sensitivity or display clarity. Enjoy your device with enhanced screen protection.

5. Maintenance and Care

To maintain the clarity and effectiveness of your screen protector:

- **Cleaning:** Use the provided microfiber cleaning cloth to gently wipe the screen protector. For

smudges, lightly dampen the cloth with water or a screen-safe cleaning solution. Avoid harsh chemicals or abrasive materials.

- **Avoid Sharp Objects:** While the protector offers scratch resistance, extreme pressure or sharp objects can still damage it.
- **Reusability:** The ClearTouch Crystal is designed with a glueless adhesive, allowing for reuse and reinstallation if needed. Ensure the adhesive side remains clean during removal and reapplication.

6. Troubleshooting

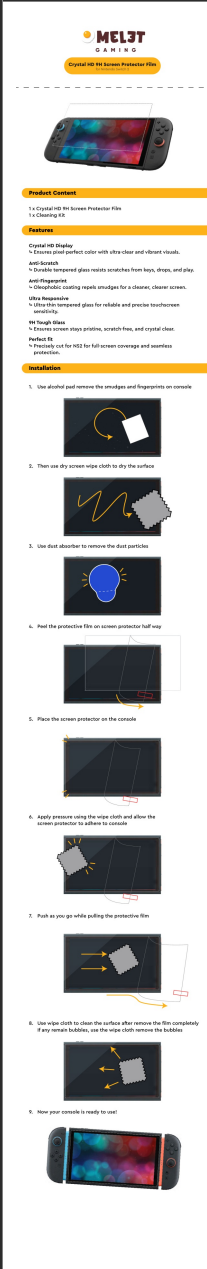
- **Bubbles After Installation:** Small bubbles or air gaps, especially around the edges, are common immediately after installation due to the low-tack adhesive. These typically dissipate within 2 days of regular use as the adhesive fully cures. Gently push larger bubbles towards the nearest edge with the applicator card.
- **Dust Particles Under Protector:** If dust particles are trapped, carefully lift the nearest corner of the screen protector, use a dust-removing sticker (not included, but often found with screen protectors) or a piece of tape to lift the dust, then reapply the protector.
- **Misalignment:** If the protector is significantly misaligned, carefully peel it off, clean both the device screen and the protector's adhesive side (if necessary), and attempt reinstallation following the steps above.

7. Product Specifications

Feature	Detail
Brand	BoxWave
Model	ClearTouch Crystal
Compatibility	TOGUARD CE35
Material	Polyethylene Terephthalate (PET)
Screen Surface Description	Glossy
Transparency	99% Visual Transparency
Adhesive Type	Glueless, Low-Tack

8. Warranty and Support

Specific warranty information for the BoxWave ClearTouch Crystal Screen Protector is not provided within this manual. For details regarding warranty coverage, returns, or technical support, please refer to the BoxWave official website or contact their customer service directly. Contact information can typically be found on the product packaging or the manufacturer's website.



MEL3T GAMING Crystal HD 9H Screen Protector Film for Nintendo Switch 2 Installation Guide

Detailed guide for installing the MEL3T GAMING Crystal HD 9H Screen Protector Film on the Nintendo Switch 2, featuring anti-scratch, anti-fingerprint, and ultra-responsive properties.



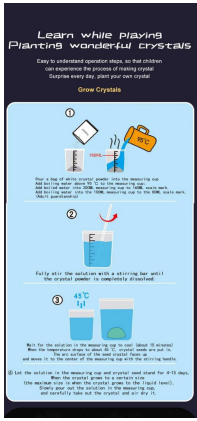
Quikcell Screen Care Guide: Crystal-Clear Film Screen Protector Installation

Follow the Quikcell Screen Care Guide for easy installation of your Crystal-Clear Film screen protector. Learn how to clean, align, and attach the protector to your device for optimal protection.

Formmaster			
Specification			
Name: _____ Title: _____ Client: _____ Date: _____			
Specification			
Product Name: CRSP Electric Projection Screen Product Number: _____ File Number: _____ Edition: A01			
Customer Confirmation			
Please return one copy after verification.			
Customize <input type="checkbox"/>	Review <input type="checkbox"/>	Approve <input type="checkbox"/>	
Page 1			

Yovanxer CBSP Electric Projection Screen: Technical Specifications & Features (72-130 Inch)

Comprehensive technical specifications and features for the Yovanxer CBSP Electric Projection Screen, including dimensions, installation, operation, and suitability for ultra-short throw projectors. Available in sizes from 72 to 130 inches.



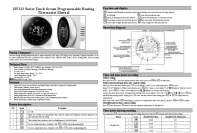
[How to Grow Crystals: A Fun Planting Activity](#)

Step-by-step instructions for growing beautiful crystals at home. This guide explains the process for children to experience crystal formation and surprise.



[INFICON Cygnus 2 Thin Film Deposition Controller Operating Manual](#)

This operating manual provides detailed information on the INFICON Cygnus 2 Thin Film Deposition Controller, covering installation, setup, operation, specifications, and troubleshooting for precise thin film deposition processes.



[HY312 Series Touch Screen Programmable Heating Thermostat Manual](#)

User manual for the HY312 Series Touch Screen Programmable Heating Thermostat, detailing its features, technical specifications, operation, programming, and wiring diagrams for floor heating systems.