

Manuals+

[Q & A](#) | [Deep Search](#) | [Upload](#)

[manuals.plus](#) /

- › [Eogiffee](#) /
- › [Eogiffee UC9050T Ceiling Fan Wall Remote Control Kit User Manual](#)

Eogiffee UC9050T

Eogiffee UC9050T Ceiling Fan Wall Remote Control Kit

Model: UC9050T | Brand: Eogiffee

INTRODUCTION

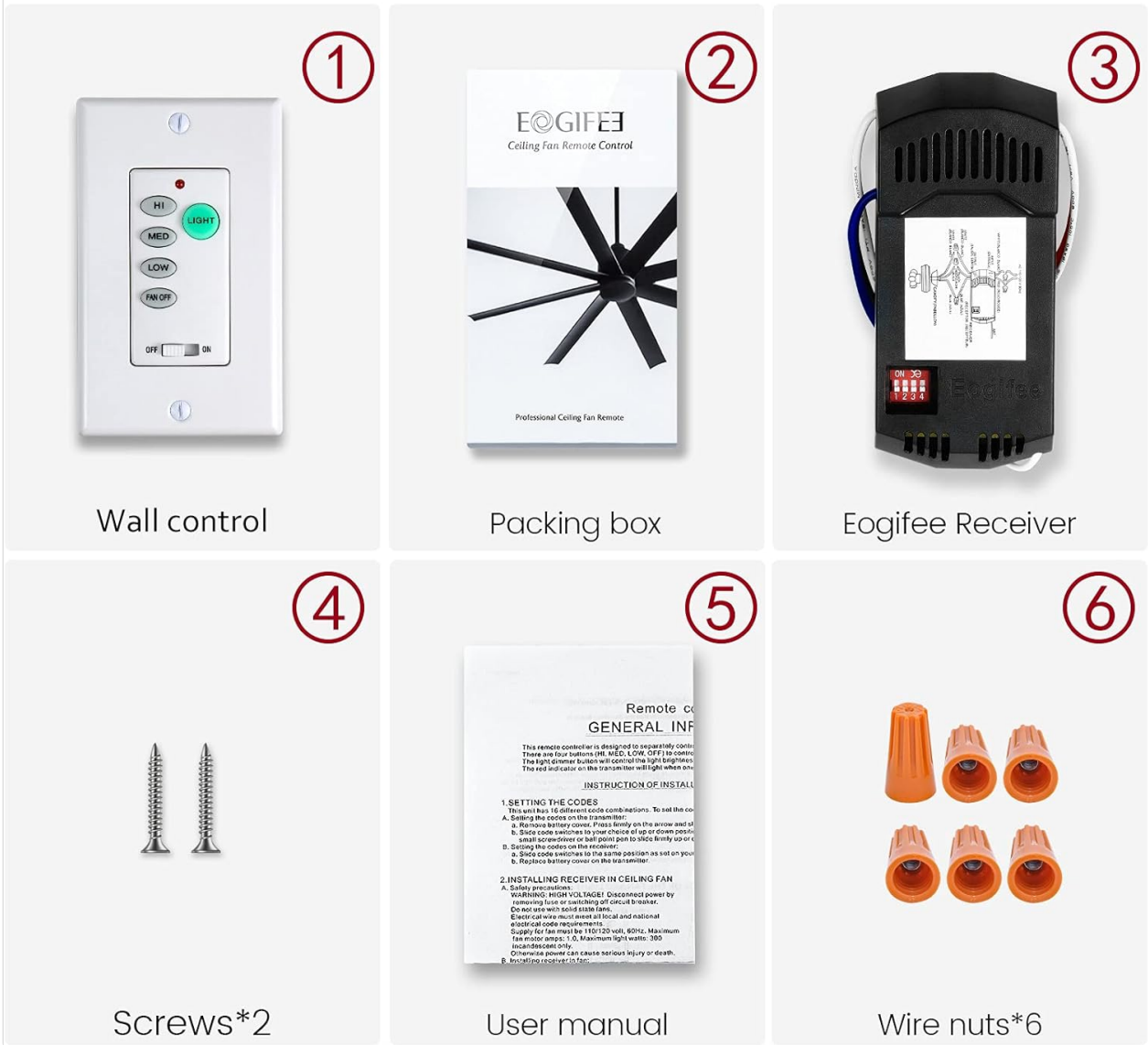
Thank you for choosing the Eogiffee UC9050T Universal Ceiling Fan Wall Remote Control Kit. This kit is designed to provide convenient control over your ceiling fan's speed and light functions, offering adjustable 3-speed fan control and light dimming capabilities. It is compatible with a wide range of ceiling fan brands, including Hampton Bay, Harbor Breeze, and Hunter. Please read this manual thoroughly before installation and operation to ensure safe and proper use.

PACKAGE CONTENTS

Please verify that all items listed below are included in your package:

- Wall Control (Remote) x 1
- Receiver x 1
- Wall Mount Holder x 1
- User Guide x 1
- Wire Nuts x 6
- Screws x 2

PACKAGE INCLUDE



This image illustrates all items included in the product package: (1) Wall control, (2) Packing box, (3) Eogiffee Receiver, (4) 2 Screws, (5) User manual, and (6) 6 Wire nuts.

SPECIFICATIONS

Feature	Specification
Brand	Eogiffee
Model Number	UC9050T
Operation Mode	Automatic
Contact Type	Normally Open
Connector Type	Screw Terminals
Terminal	Screw
Circuit Type	1-way

Feature	Specification
Actuator Type	Push Button
Contact Material	Copper
Number of Positions	3 (Fan Speeds)
Controller Type	Button Control
Control Method	Remote
Connectivity Protocol	Wi-Fi (Wireless RF)
Color	Green (Light Button)
Unit Count	1.0 Count (Kit)
Manufacturer	Eogiffee
UPC	715377505163
Package Dimensions	5.39 x 4.61 x 2.64 inches
Item Weight	9.6 ounces
Country of Origin	China

SETUP

Pre-Installation Checklist

- Ensure power to the ceiling fan circuit is turned OFF at the circuit breaker before beginning installation.
- Confirm that your existing ceiling fan is compatible (see Compatibility section).
- Gather necessary tools: screwdriver, wire strippers, electrical tape (optional).

Setting the DIP Switches

The remote control and receiver communicate via a unique frequency code set by DIP switches. For proper operation, the DIP switches on both the remote and the receiver must match. If you are replacing an existing remote/receiver, match the new unit's DIP switches to the pattern of your old unit. If installing a new system, set the switches to any desired pattern, ensuring both units match.

SETTING THE CODES

Note: Slide the switches in the new remote to match the same pattern as the original remote.



Product Features



3-Speed Control:
HIGH/MED/LOW/FAN OFF



Light Dimmer:
ON/OFF/DIMMING



Dimmable Button

A hand is shown interacting with the wall remote, highlighting its key features: 3-speed fan control (High, Medium, Low, Fan Off), light dimmer functionality (On/Off/Dimming), and a dimmable button. The background shows a ceiling fan in a living room setting.

SET DIFFERENT PIN CODE IF CONTROL MULTIPLE CEILING FANS

NOTE: If you control multiple ceiling fans in the house, please check the PIN code settings are different between these, or it may let transmitter next door or your neighbourhood's remote activates this ceiling fan in your other rooms. This may cause the fan turning on strangely while you are not at home.



This diagram illustrates the process of setting the DIP switches on both the wall remote and the receiver unit. It emphasizes that the switches (numbered 1-4) must match between the remote and receiver to ensure proper communication, especially when controlling multiple ceiling fans in a household.

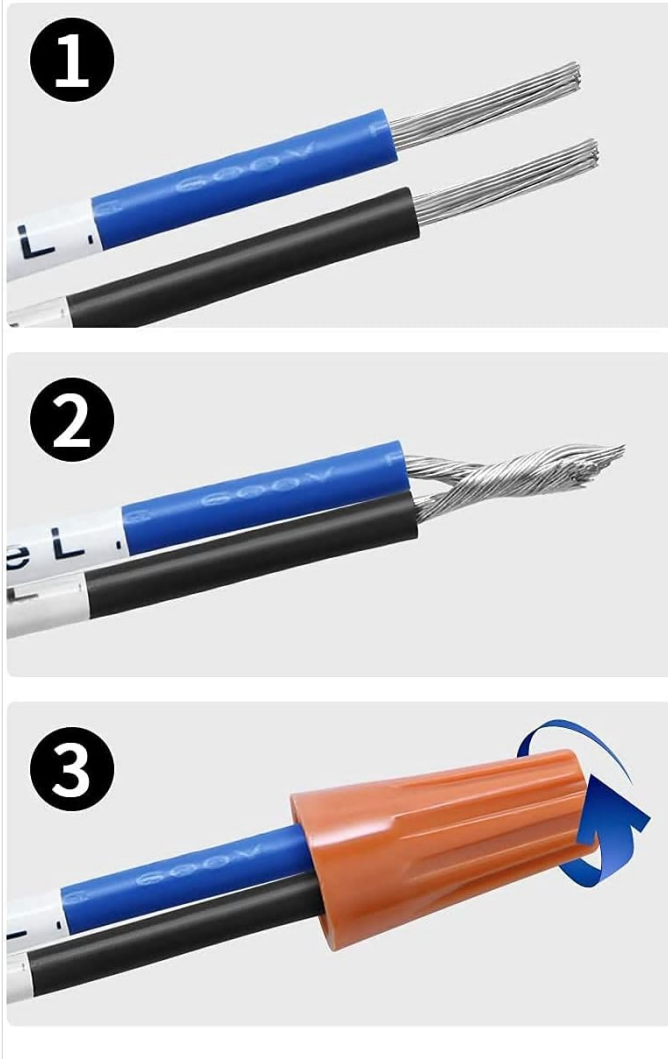
Wiring Instructions

The receiver is designed to be installed within the ceiling fan's canopy or electrical box. Follow these steps carefully:

1. Turn off power to the ceiling fan at the circuit breaker.
2. Remove the existing wall switch or access the wiring in the ceiling fan canopy.
3. Connect the receiver wires to the corresponding fan and house wires using the provided wire nuts. The receiver has a 250W capacity, allowing for robust performance.
 - **Black wire (Receiver) to Black wire (Fan/House - Live)**
 - **White wire (Receiver) to White wire (Fan/House - Neutral)**
 - **Blue wire (Receiver) to Blue wire (Fan Light)**
 - **Red wire (Receiver) to Red wire (Fan Motor)**
 - **Green wire (Receiver) to Green/Bare wire (Ground)**
4. Secure all connections with wire nuts, ensuring no bare wires are exposed.

5. Carefully tuck the receiver and wires into the electrical box or fan canopy.
6. Install the wall control into the wall box and secure it with the provided screws.
7. Restore power at the circuit breaker and test the system.

How To Use Wire Nuts?



A three-step visual guide demonstrates the correct method for using wire nuts. Step 1 shows two stripped wires, Step 2 shows them twisted together, and Step 3 shows the wire nut being twisted onto the twisted wires to secure the connection.

NOTE: If your ceiling fan has PULL CHAINS SWITCHES, before using the wireless remote control, use the PULL CHAINS SWITCH to turn the fan speed to maximum and turn the fan light on. This ensures proper synchronization between the pull chains and the wireless remote control.

OPERATING INSTRUCTIONS

Remote Control Functions

- **LIGHT Button (Green):** Press to turn the light ON/OFF. Press and hold to dim or brighten the light. This button has a luminous function for easy visibility in the dark.
- **HI Button:** Sets the fan speed to High.

- **MED Button:** Sets the fan speed to Medium.
- **LOW Button:** Sets the fan speed to Low.
- **FAN OFF Button:** Turns the fan OFF.
- **Main Power Switch (Slider):** Located at the bottom of the remote. Slide to 'ON' for operation and 'OFF' to completely disable all buttons, providing a safety feature for when you are away.

COMPATIBILITY

The Eogiffee UC9050T kit is designed for universal compatibility with many popular ceiling fan brands, including but not limited to Hampton Bay, Harbor Breeze, Hunter, Litex, Home Decorators Collection, Westinghouse, and Honeywell.

Regarding lighting, the dimmer function is primarily for incandescent and halogen lamps. It is also compatible with some dimmable LED/CFL bulbs. If your original LED/CFL bulbs are not dimmable, the remote will only control their On/Off function.

Important Note:

- Do not use this kit with wall-mounted fans or exhaust-type fans.
- Ensure your fan is a downrod style fan for proper installation and function.



Compatible with most downrod style fans



Halogen & Incandescent Lamps



Please don't use with wall mounted fans or exhaust-type fans



Dimmable LED Lamps



Dimmable CFL Lamps



Compatible with incandescent light bulbs and dimmable LED/CFL lamps, other LED/CFL lamps only support ON/OFF function.

This image provides a visual guide to the compatibility of the UC9050T kit. It shows that the kit is compatible with most downrod style fans and halogen/incandescent lamps. It also indicates compatibility with dimmable LED and CFL lamps, but notes that non-dimmable versions will only support On/Off functionality. It explicitly states not to use with wall-mounted or exhaust fans.

MAINTENANCE

- **Cleaning:** Wipe the remote control and wall plate with a soft, dry cloth. Do not use abrasive cleaners or solvents.
- **Battery Replacement:** (If applicable, for the remote control unit) If the remote's indicator light does not illuminate or its range decreases, replace the battery. Refer to the remote's specific battery type if different from the wall control.
- **Environmental Conditions:** Avoid exposing the unit to excessive moisture, extreme temperatures, or direct sunlight.

TROUBLESHOOTING

Problem	Solution
Fan/Light does not respond to remote.	<ul style="list-style-type: none"> ◦ Ensure the main power switch on the remote is in the 'ON' position. ◦ Verify that the DIP switches on both the remote and receiver match exactly. ◦ Check if power is supplied to the fan at the circuit breaker. ◦ If the fan has pull chains, ensure the fan speed is set to HIGH and the light is ON via the pull chains before using the remote.
Light does not dim.	<ul style="list-style-type: none"> ◦ Confirm that the light bulbs installed are dimmable. Non-dimmable LED/CFL bulbs will only support On/Off functionality. ◦ Ensure you are pressing and holding the LIGHT button to activate the dimming function, not just pressing it briefly.
Fan operates at wrong speed or erratically.	<ul style="list-style-type: none"> ◦ Re-check the DIP switch settings on both the remote and receiver to ensure they match. ◦ Ensure the fan's pull chain (if present) is set to the highest speed.
Remote range is poor.	<ul style="list-style-type: none"> ◦ Ensure there are no major obstructions between the remote and the fan receiver. ◦ Check for strong interference from other electronic devices.
Receiver does not fit in fan canopy/electrical box.	<ul style="list-style-type: none"> ◦ The receiver is designed to be compact, but some older or smaller electrical boxes may be tight. Carefully arrange wires to maximize space. ◦ Ensure all wires are properly stripped and connected to minimize bulk.

WARRANTY AND SUPPORT

For specific warranty information, please refer to the documentation included with your purchase or contact Eogiffee customer support directly. This product is covered by a standard manufacturer's warranty against defects in materials and workmanship.

For additional support or to download the official user manual in PDF format, please visit [Eogiffee UC9050T User Manual \(PDF\)](#)

IMPORTANT SAFETY INFORMATION

- Always turn off power at the circuit breaker before installing, cleaning, or performing any maintenance on the fan or remote control system.
- Installation should be performed by a qualified electrician or a person with sufficient electrical knowledge.
- Ensure all wiring connections are secure and properly insulated to prevent electrical hazards.
- Do not exceed the maximum wattage rating of the receiver (250W).
- This device is intended for indoor use only. Do not expose to water or high humidity.
- Keep out of reach of children.

