

Manuals+

[Q & A](#) | [Deep Search](#) | [Upload](#)

manuals.plus /

> [Innovia](#) /

> [Innovia Automatic Paper Towel Dispenser User Manual \(Model B09C2RB66R\)](#)

Innovia B09C2RB66R

Innovia Automatic Paper Towel Dispenser User Manual

Model: B09C2RB66R

Brand: Innovia

INTRODUCTION

This manual provides detailed instructions for the installation, operation, and maintenance of your Innovia Automatic Paper Towel Dispenser. This touchless dispenser is designed for convenience and hygiene, working with most paper towel brands and sizes. Please read these instructions carefully before use to ensure proper functionality and longevity of your device.



Figure 1: Front view of the Innovia Automatic Paper Towel Dispenser.

SAFETY INFORMATION

- Ensure the dispenser is mounted securely to prevent accidental falls.
- This under-cabinet model is powered by an AC adapter only. Mount near a suitable electrical outlet.
- Keep hands clear of the dispensing mechanism during operation to avoid injury.
- Do not immerse the dispenser in water or expose it to excessive moisture.
- Use only recommended paper towel roll sizes to prevent jamming.

SETUP

1. Mounting

The Innovia dispenser can be mounted under your cabinet or on a wall. Use the included mounting bracket and installation template. Ensure the chosen location is near an AC power outlet.



Figure 2: Dispenser mounted under a kitchen cabinet.

2. Power Connection

Connect the provided AC adapter to the dispenser and plug it into a standard electrical outlet. The dispenser requires continuous AC power for operation.

3. Loading Paper Towels

1. Open the dispenser cover.
2. Place your paper towel roll inside the dispenser.
3. Pull one sheet of paper towel out, leaving it hanging outside the dispenser opening.
4. Close the dispenser cover.



Figure 3: Loading a paper towel roll.

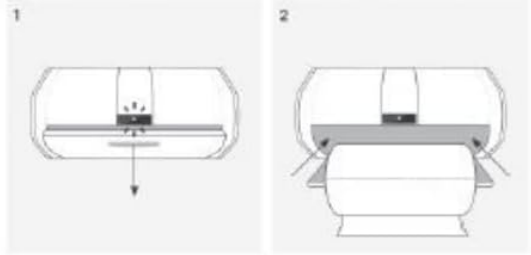
4. Setting Dispensing Mode

The first tear you make (either a half sheet or a full sheet) after loading a new roll will set the dispenser's mode. The dispenser will consistently dispense this chosen sheet length until the roll is replaced.

STOP

You must program your dispenser before using. See page 4 in the instruction manual.

Loading & Setting Towel Length



1 Grasp the handle and squeeze to unlatch the paper towel compartment. A red light will turn on while the door is open.

2 Insert the towel roll, leaving some towel hanging outside of the dispenser. Close and latch compartment. Red light will turn off at this time.

4

Figure 4: Important setup instruction for setting towel length.

Setup Video Tutorial



Video 1: Innovia Dispenser Set Up Tutorial. This video demonstrates the step-by-step process for installing and preparing your dispenser for use.

OPERATING INSTRUCTIONS

1. Dispensing Paper Towels

The dispenser utilizes smart sensor technology for touchless operation. Simply wave your hand in front of the sensor, and the dispenser will present a sheet of paper towel.



Figure 5: Touchless dispensing in action.

2. Automatic Retraction

After you tear off the desired amount of paper towel, any unused portion will automatically retract back into the dispenser. This feature helps keep the roll clean and dry.



Innovia® Touchless Paper Towel Dispenser keeps your roll clean and dry by automatically retracting unused sheets.

IMPORTANT: When training the dispenser, set it to dispense only 1 or ½ sheets to avoid retraction issues.

Watch the video for proper setup instructions

Figure 6: Automatic retraction of paper towel.

Operation Video



Video 2: Automatic paper towel dispenser with smart technology. This video demonstrates the touchless operation and smart features of the dispenser.

MAINTENANCE

1. Easy Roll Replacement

To replace an empty roll:

1. Open the dispenser cover.
2. Remove the empty paper towel roll.
3. Insert a new paper towel roll.
4. Pull one sheet out, leaving it hanging, and close the cover.
5. Remember to set the dispensing mode by making your first tear (half or full sheet) with the new roll.

2. Cleaning

Wipe the exterior of the dispenser with a soft, damp cloth. Avoid using abrasive cleaners or solvents that could damage the finish. Ensure the sensor area remains clean for optimal performance.

TROUBLESHOOTING

If your Innovia Automatic Paper Towel Dispenser does not operate as expected, please check the following:

- **Power Source:** Ensure the AC adapter is securely plugged into both the dispenser and a working electrical outlet.
- **Roll Placement:** Verify that the paper towel roll is correctly loaded and that a sheet is hanging out as instructed in the "Loading Paper Towels" section.
- **Sensor Obstruction:** Ensure nothing is blocking the smart sensor.

- **Dispensing Mode:** Confirm the dispensing mode was set correctly after the last roll change.

For further assistance or quick troubleshooting, please contact our U.S.-based support team at **1-800-283-5547** (Monday–Friday, 8 a.m.–5 p.m. EST).

SPECIFICATIONS

Brand	Innovia
Model Number	B09C2RB66R
Color	White
Mounting Type	Under Cabinet / Wall Mount
Item Weight	4.69 Pounds
Product Dimensions	14.1"L x 4"W
Power Source	AC Adapter Only
UPC	850443004321

WARRANTY AND SUPPORT

For any product-related inquiries, technical support, or warranty information, please contact Innovia customer service.

- **Phone Support:** 1-800-283-5547 (Monday–Friday, 8 a.m.–5 p.m. EST)
- **Online Support:** Visit [Innoviahome.com](https://www.innoviahome.com) for additional resources and support.

