

Tribesigns B09C1S6SM5

Tribesigns Industrial Kitchen Island with Storage

Model: B09C1S6SM5

INTRODUCTION

This manual provides comprehensive instructions for the assembly, operation, and maintenance of your Tribesigns Industrial Kitchen Island with Storage. Designed to enhance kitchen functionality, this island features a spacious worktop, multiple shelves, and convenient hooks for organization. Please read these instructions carefully before assembly and use to ensure safe and proper operation.

SAFETY INFORMATION

Warning:

- Ensure the kitchen island is placed on an even and stable surface to prevent tipping or instability.
- Do not exceed the maximum load capacity of 110 lb (approximately 50 kg) for the entire unit. Distribute weight evenly across shelves and the tabletop.
- Follow all assembly instructions precisely. Incorrect assembly can compromise the structural integrity and safety of the unit.
- Keep small parts and packaging materials away from children during assembly to prevent choking hazards.

PRODUCT SPECIFICATIONS

Dimensions (L x W x H)	43.31 x 19.69 x 35.43 inches (110 x 50 x 90 cm)
Item Weight	45 pounds (20.4 kg)
Material	Engineered Wood (E1-graded MDF), Robust Metal Frame
Number of Shelves	8 (2 large open shelves, 6 side racks)
Number of Hooks	12 (S-shaped hooks)
Color	Rustic Brown and Black
Special Feature	Scratch Resistant, Adjustable Protective Feet
Assembly Required	Yes



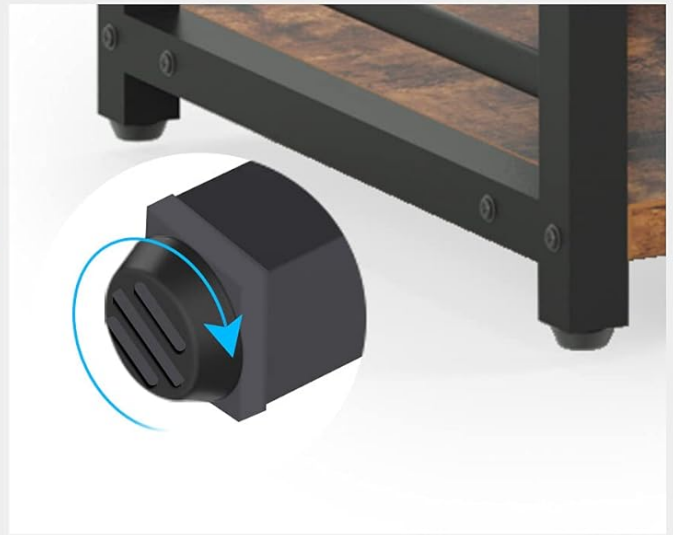
Figure 1: Product Dimensions Overview

## FEATURES OVERVIEW

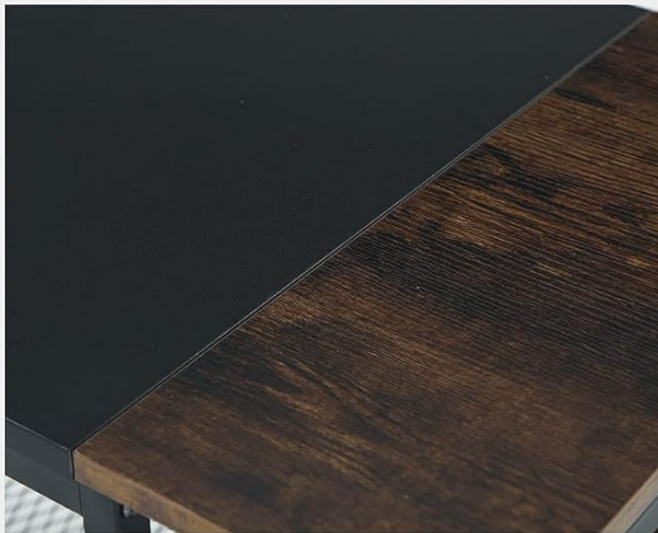
- **Spacious Worktop:** The 43.31" (L) x 19.69" (W) countertop provides ample space for food preparation, serving, or as a coffee bar.
- **Flexible Storage:** Includes two large open shelves and six side racks, suitable for microwaves, small appliances, spices, and other kitchen essentials.
- **Integrated Hooks:** Twelve S-shaped hooks are provided for hanging utensils, pots, pans, or towels, maximizing vertical storage.
- **Durable Construction:** Built with a robust metal frame and E1-graded MDF wood for stability and long-lasting use.
- **Adjustable Feet:** Equipped with adjustable protective feet to ensure stability on uneven floors and prevent scratches.
- **Industrial Design:** Features a rustic brown and black color-blocking design that complements various kitchen aesthetics.



▲ **12 S-Shaped Hooks**



▲ **Adjustable Protective Feet**



▲ **Color Block Design**



▲ **Stable Triangular Design**

Figure 2: Key Product Features

## ASSEMBLY INSTRUCTIONS

The Tribesigns Kitchen Island is designed for straightforward assembly. All necessary tools and hardware are included in the package. Please follow the step-by-step instructions provided in the separate assembly guide that accompanies your product. Ensure all parts are accounted for before beginning assembly.

1. Unpack all components and verify against the parts list in the assembly guide.
2. Identify each part, as they are typically labeled for easy recognition.
3. Assemble the main frame structure first, ensuring all connections are secure but not overtightened initially.
4. Attach the shelves and side racks according to the diagrams.
5. Install the tabletop and ensure it is flush and securely fastened.
6. Attach the 12 S-shaped hooks to the designated bars.
7. Adjust the protective feet to level the island on your floor.
8. Once fully assembled, tighten all fasteners to ensure maximum stability.

*Note: Assembly typically takes approximately 40 minutes. It is recommended to have a clear workspace.*

Your browser does not support the video tag.

Video 1: Tribesigns Kitchen Island Overview. This video demonstrates the features and potential uses of the kitchen island, providing a visual guide to its design and functionality.

## OPERATING INSTRUCTIONS

---

Your Tribesigns Kitchen Island is designed for versatile use in various settings. Here are guidelines for optimal operation:

- **Worktop Usage:** Utilize the spacious tabletop for food preparation, dining, or as a display surface. For cutting and chopping, always use a cutting board to protect the surface.
- **Shelf Organization:** The two large open shelves are ideal for larger appliances like microwaves, blenders, or instant pots. The six side racks are perfect for organizing spices, oils, small dishes, or cookbooks.
- **Hook Utilization:** The 12 S-shaped hooks can be used to hang kitchen utensils, dish towels, oven mitts, or small pots and pans, keeping them within easy reach.
- **Appliance Placement:** When placing electrical appliances, ensure their cords can reach an outlet without strain. The open back design of the main compartment allows for easy cord management.



# Maximize the Utilization of Your Kitchen Space

Satisfy your diverse storage requirement



Figure 3: Example of Kitchen Island Storage and Organization

## MAINTENANCE AND CARE

Proper care will extend the life and appearance of your kitchen island:

- **Cleaning:** Wipe surfaces with a damp cloth for general cleaning. For spills, wipe immediately with a dry cloth to prevent moisture damage. Avoid abrasive cleaners or harsh chemicals.
- **Surface Protection:** While the surface is scratch-resistant, using cutting boards and placemats is recommended to protect against excessive wear and heat.
- **Regular Checks:** Periodically check all screws and fasteners to ensure they remain tight. Retighten if necessary to maintain stability.
- **Adjustable Feet:** Re-adjust the protective feet if the island becomes wobbly due to uneven flooring.

## TROUBLESHOOTING

If you encounter any issues with your kitchen island, refer to the following common solutions:

- **Wobbling or Instability:**

- Ensure the island is on a flat, even surface.
- Adjust the protective feet at the bottom of the legs to compensate for unevenness.
- Check all assembly screws and bolts. If any are loose, tighten them securely. Pay particular attention to crossbars or support beams, as these are critical for stability.

- **Parts Missing or Damaged:**

- Refer to the parts list in your assembly guide. If any parts are missing or damaged upon arrival, contact customer support immediately for replacements.

## WARRANTY INFORMATION

---

Tribesigns offers an 18-month warranty for this product, covering manufacturing defects and material flaws under normal use. This warranty does not cover damage resulting from improper assembly, misuse, accidents, or unauthorized modifications. Please retain your proof of purchase for warranty claims.

## CUSTOMER SUPPORT

---

For any questions, concerns, or assistance with your Tribesigns Kitchen Island, please contact our customer service team. We are committed to providing friendly and helpful support.

**Contact Information:**

**Website:** [Visit the Tribesigns Store on Amazon](#)

**Email:** Refer to your product packaging or the separate assembly guide for specific email contact.

**Phone:** Refer to your product packaging or the separate assembly guide for specific phone contact.