

UT888

Portable Bluetooth Speaker User Manual

Model: UT888 | Brand: Generic

INTRODUCTION

Thank you for purchasing the Portable Bluetooth Speaker. This manual provides essential information for setting up, operating, and maintaining your speaker. Please read it thoroughly before use to ensure optimal performance and safety.

SAFETY INFORMATION

- Do not expose the speaker to extreme temperatures, direct sunlight, or high humidity.
- Avoid dropping or subjecting the speaker to strong impacts.
- Do not disassemble, repair, or modify the speaker yourself. Contact qualified service personnel for assistance.
- Keep the speaker away from water and liquids, despite its waterproof rating, to prevent damage to internal components.
- Use only the specified charging cable and power source to prevent damage or fire.
- Dispose of the speaker and its battery responsibly according to local regulations.

PACKAGE CONTENTS

Please check the package for the following items:

- Portable Bluetooth Speaker (Model: UT888)
- USB Charging Cable
- User Manual

PRODUCT OVERVIEW

Familiarize yourself with the speaker's components and controls.

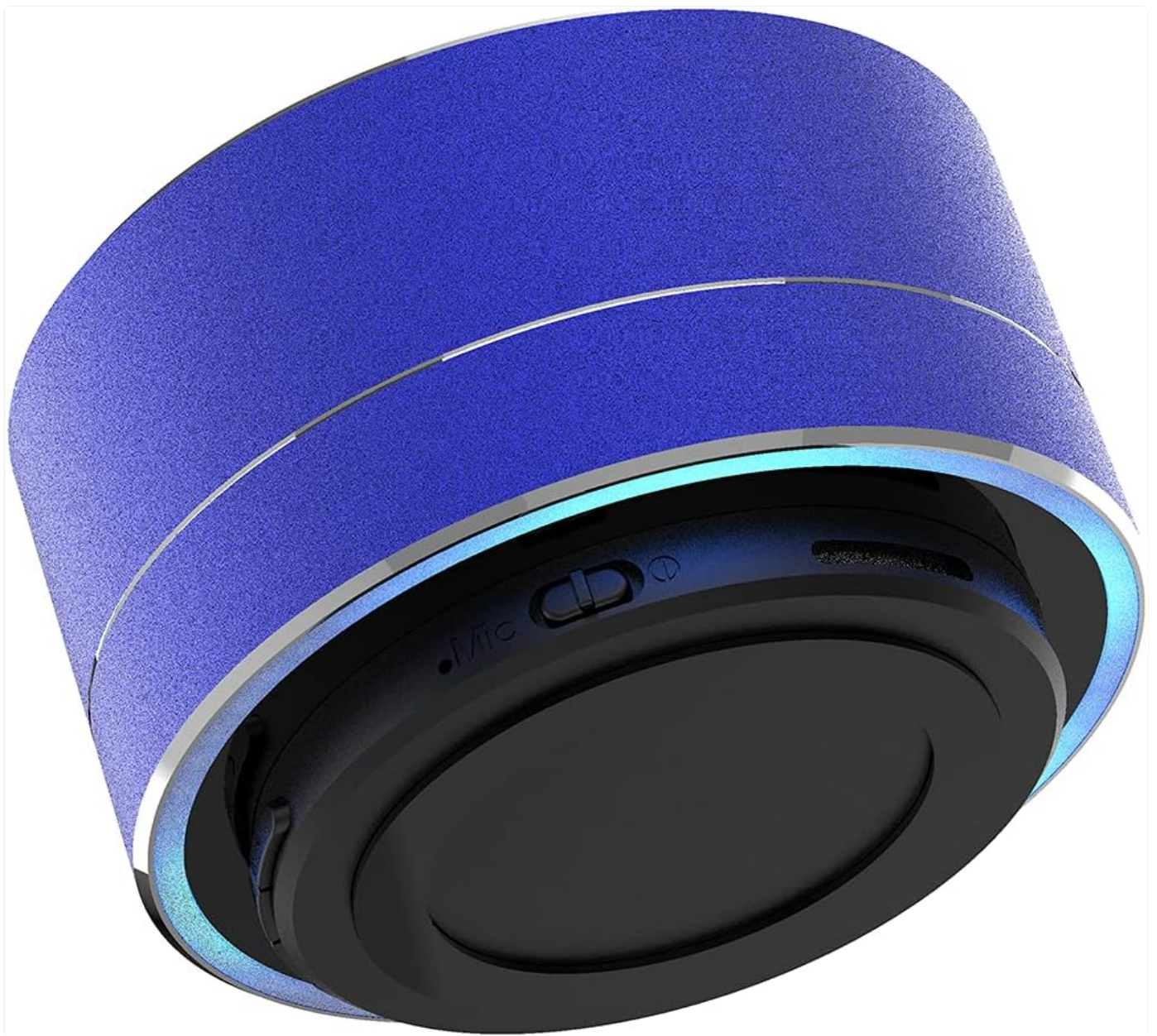


Figure 1: Front view of the Portable Bluetooth Speaker, showcasing its blue aluminum body and compact design.

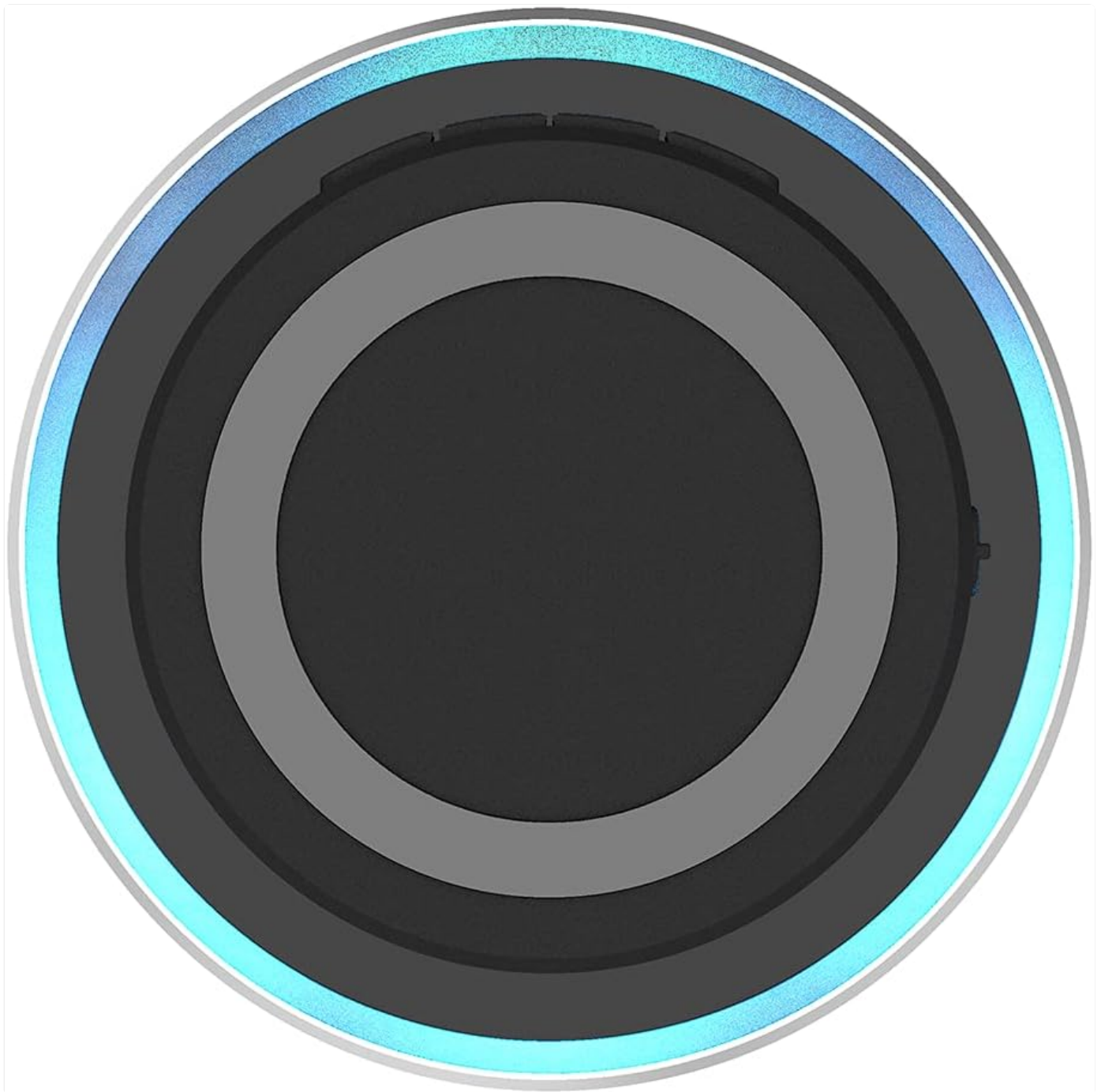


Figure 2: Bottom view of the speaker, highlighting the control buttons and microphone port. Controls include Mode (M), Previous/Volume Down, Play/Pause, Next/Volume Up, and Power/Call.



Figure 3: Side view of the speaker, showing the Micro USB charging port.

Controls and Ports:

- **Power Button:** Press and hold to power on/off. Short press to play/pause music or answer/end calls.
- **Mode (M) Button:** Short press to switch between Bluetooth, FM Radio, and other available modes.
- **Volume Down / Previous Track:** Short press for previous track, long press to decrease volume.
- **Volume Up / Next Track:** Short press for next track, long press to increase volume.
- **Microphone (Mic):** For hands-free calling.
- **Charging Port:** Micro USB port for charging the speaker.

SETUP

1. Charging the Speaker

1. Connect the supplied USB charging cable to the speaker's charging port.
2. Connect the other end of the USB cable to a USB power adapter (not included) or a computer's USB port.
3. The charging indicator light will illuminate. Once fully charged, the light may change color or turn off.
4. A full charge typically takes approximately 2-3 hours.

2. Powering On/Off

- **To Power On:** Press and hold the Power button for 2-3 seconds until you hear an audible prompt or see the indicator light flash.
- **To Power Off:** Press and hold the Power button again for 2-3 seconds until the speaker powers down.

OPERATING INSTRUCTIONS

1. Bluetooth Pairing

1. Ensure the speaker is powered on and in Bluetooth pairing mode (indicated by a flashing blue light or an audible prompt). If not, short press the 'M' button to switch to Bluetooth mode.
2. Enable Bluetooth on your device (smartphone, tablet, computer).
3. Search for available Bluetooth devices. The speaker will appear as "UT888" or similar.
4. Select "UT888" to connect. Once connected, you will hear a confirmation sound, and the indicator light will stop flashing.
5. The speaker will automatically reconnect to the last paired device when powered on, if the device's Bluetooth is active and within range.

2. True Wireless Stereo (TWS) Function

The TWS function allows you to pair two UT888 speakers together for a true stereo sound experience.

1. Ensure both speakers are powered on and not connected to any Bluetooth device.
2. On one of the speakers (this will be the primary speaker), long press the 'M' button or a dedicated TWS button (if available, refer to product diagram) until you hear a pairing prompt.
3. The two speakers will automatically search and pair with each other. Once paired, you will hear a confirmation sound.
4. Now, connect your device to the primary speaker via Bluetooth as described in "Bluetooth Pairing" (Step 1).
5. Audio will now play in stereo through both speakers.

3. FM Radio Mode

1. Short press the 'M' button to switch to FM Radio mode.
2. To auto-scan and save available stations, long press the Play/Pause button. The speaker will scan and store stations automatically.
3. Use the Previous/Next buttons to navigate between saved stations.

4. Hands-Free Calling

- When a call comes in while connected via Bluetooth, the music will pause.
- Short press the Power/Play/Pause button to answer the call.
- Short press the Power/Play/Pause button again to end the call.
- Long press the Power/Play/Pause button to reject an incoming call.

MAINTENANCE

- **Cleaning:** Use a soft, dry cloth to wipe the speaker's surface. Do not use abrasive cleaners or solvents.
- **Storage:** When not in use for extended periods, store the speaker in a cool, dry place away from direct sunlight and extreme temperatures.
- **Battery Care:** To prolong battery life, charge the speaker fully before first use and recharge it at least once every three months if not used regularly.

TROUBLESHOOTING

Problem	Possible Cause	Solution
---------	----------------	----------

Problem	Possible Cause	Solution
Speaker does not power on.	Low battery.	Charge the speaker fully.
Cannot pair with Bluetooth device.	Speaker is not in pairing mode or device Bluetooth is off.	Ensure speaker is in pairing mode. Turn off and on Bluetooth on your device. Move speaker closer to device.
No sound.	Volume too low or speaker not connected.	Increase volume on both speaker and device. Reconnect Bluetooth.
Poor FM radio reception.	Weak signal.	Relocate the speaker to an area with better reception.

SPECIFICATIONS

Feature	Detail
Model Name	UT888
Brand	Generic
Material	Aluminum, Metal, Plastic
Connectivity Technology	Bluetooth, Radio Frequency
Wireless Communication Technology	Bluetooth, Radio Frequency
Audio Output Mode	Stereo
Speaker Maximum Output Power	3 Watts
Frequency Response	20 KHz
Signal-to-Noise Ratio	85 dB
Impedance	4 Ohm
Battery Life	1 year (estimated)
Item Weight	180 Grams / 6.3 ounces
Product Dimensions	2.36 x 2.36 x 2.44 inches
Is Waterproof	TRUE

WARRANTY AND SUPPORT

This product comes with a **6-month battery warranty**. For any product-related inquiries, technical support, or warranty claims, please contact our customer service. We aim to provide quick response customer service.

Please retain your proof of purchase for warranty purposes.

