



Manuals.plus /

› **SogesHome** /

› SogesHome SH-YT-YF-1 Gaming Computer Desk User Manual

SogesHome SH-YT-YF-1

SogesHome SH-YT-YF-1 Gaming Computer Desk User Manual

Model: SH-YT-YF-1

[Introduction](#) [Safety Information](#) [Package Contents](#) [Setup & Assembly](#) [Operating](#)
[Instructions](#) [Maintenance](#) [Troubleshooting](#) [Specifications](#) [Warranty & Support](#)

1. INTRODUCTION

Thank you for choosing the SogesHome SH-YT-YF-1 Gaming Computer Desk. This desk is designed to provide a robust and ergonomic workspace for gaming and general computer use. It features a durable metal frame, a carbon fiber textured surface, and integrated accessories such as a headphone hook and cup holder for enhanced convenience.

Please read this manual thoroughly before assembly and use to ensure proper setup and to maximize the lifespan of your product.



Image 1.1: The SogesHome SH-YT-YF-1 Gaming Computer Desk in a typical setup, showcasing its spacious design and integrated features.

2. SAFETY INFORMATION

Observe the following safety precautions to prevent injury and damage to the product:

- Keep all assembly hardware out of reach of children.
- Ensure all screws and bolts are securely tightened before use. Periodically check and re-tighten as necessary.
- Do not overload the desk. Refer to the specifications section for weight capacity.
- Avoid placing hot items directly on the desk surface without protection.
- Do not stand or sit on the desk.
- Use the desk on a level surface to prevent instability and wobbling.
- When moving the desk, lift it rather than dragging to prevent damage to the floor or desk legs.

3. PACKAGE CONTENTS

Please verify that all components are present before beginning assembly. If any parts are missing or damaged, contact customer support.

- Desk Top Panel (1)
- Desk Legs (2)
- Support Beams (various)
- Headphone Hook (1)
- Cup Holder (1)
- Large Mouse Pad (1)
- Cable Management Grommets (2)
- Adjustable Foot Pads (4)
- Assembly Hardware (screws, bolts, Allen wrench)

4. SETUP & ASSEMBLY INSTRUCTIONS

Assembly typically requires two people. Ensure you have enough space and a soft surface (like a carpet) to prevent scratching components during assembly.

1. **Unpack Components:** Carefully remove all parts from the packaging and lay them out on a clean, soft surface. Check against the package contents list.
2. **Assemble Desk Legs:** Attach the horizontal support beams to the desk legs using the provided screws and Allen wrench. Do not fully tighten screws until all components are aligned.
3. **Attach Desk Top:** Carefully place the desk top panel upside down on your soft surface. Align the assembled leg frame with the pre-drilled holes on the underside of the desk top. Secure the frame to the desk top using the appropriate screws.
4. **Install Accessories:**
 - **Headphone Hook:** Attach the headphone hook to the desired side of the desk using the designated screws.
 - **Cup Holder:** Attach the cup holder to the opposite side of the desk using its designated screws.
 - **Cable Management:** Insert the cable management grommets into the pre-cut holes on the desk surface.
5. **Tighten All Screws:** Once all components are in place and aligned, fully tighten all screws and bolts.
6. **Attach Foot Pads:** Screw the adjustable foot pads into the bottom of each desk leg.
7. **Position the Desk:** Carefully flip the desk upright and place it in its desired location. Adjust the foot pads to ensure the desk is stable and level on uneven surfaces.
8. **Apply Mouse Pad:** Place the large mouse pad on the desk surface.

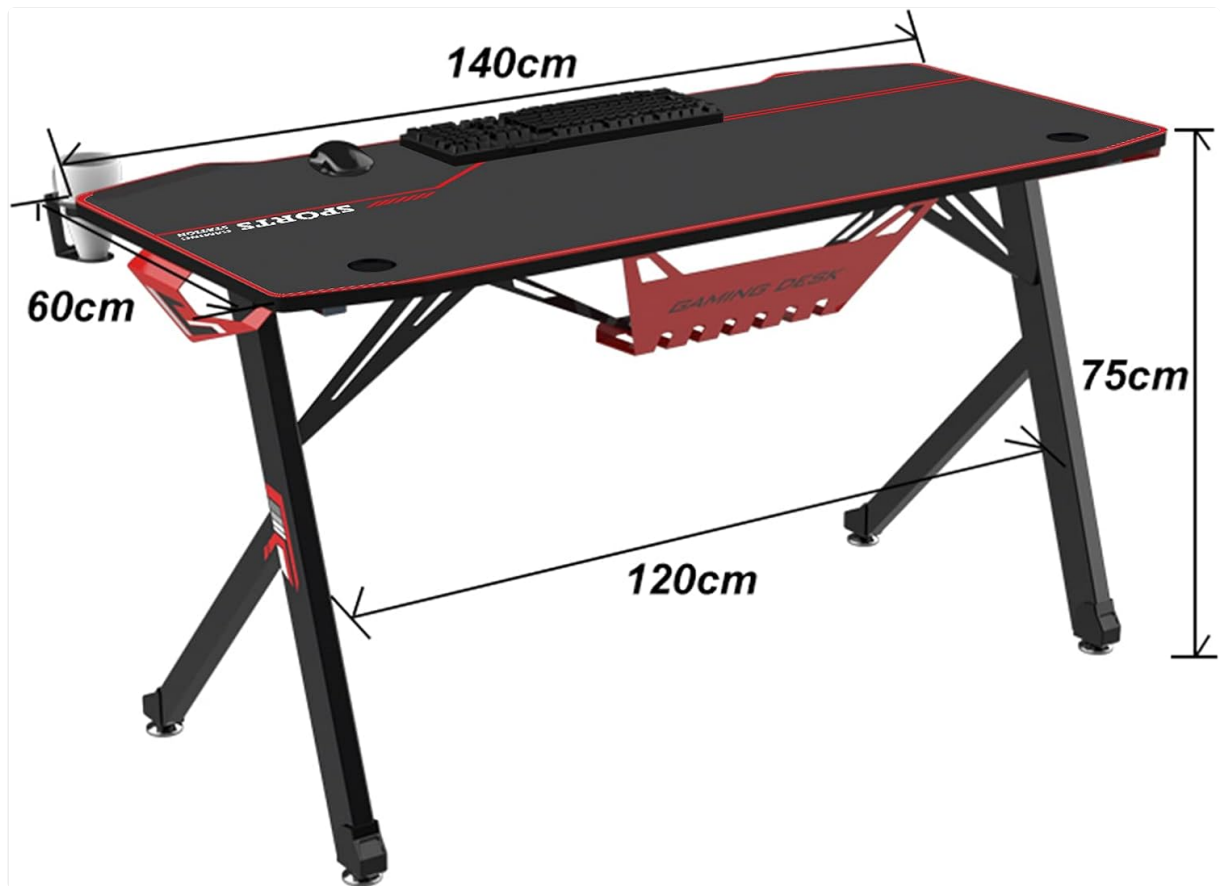


Image 4.1: Key dimensions of the desk, useful for planning your setup space.

5. OPERATING INSTRUCTIONS

The SogesHome SH-YT-YF-1 desk is designed for straightforward use with several integrated features:

- **Spacious Desktop:** The 140 x 60 cm surface provides ample space for multiple monitors, a keyboard, mouse, and other gaming or work peripherals. The carbon fiber texture offers a smooth and durable surface.
- **Headphone Hook:** Utilize the integrated hook to conveniently store your gaming headset or headphones, keeping them within reach and off the desk surface.
- **Cup Holder:** The attached cup holder provides a secure place for your beverage, reducing the risk of spills on your equipment.
- **Cable Management:** Use the cable grommets to route and organize your cables, maintaining a tidy and clutter-free workspace.
- **Adjustable Foot Pads:** If your floor is uneven, adjust the foot pads at the bottom of each leg by twisting them until the desk is stable and does not wobble.

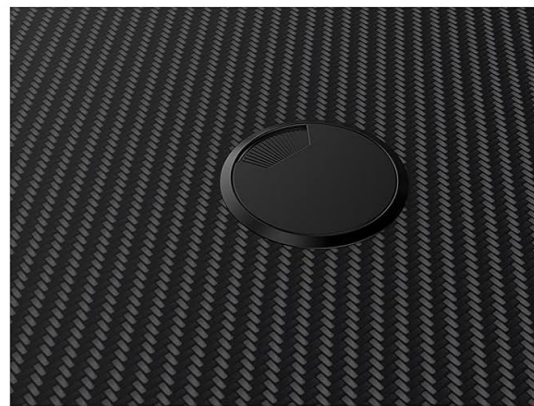
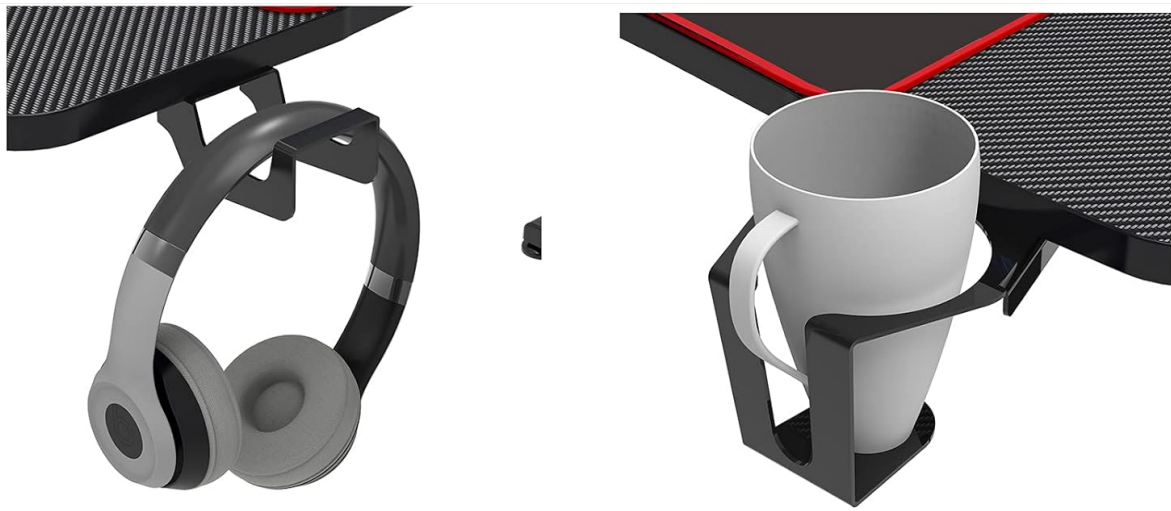


Image 5.1: Detailed view of the headphone hook, cup holder, and cable management features.

6. MAINTENANCE

Proper maintenance will help extend the life and appearance of your desk:

- **Cleaning:** Wipe the desk surface with a soft, damp cloth. For stubborn marks, use a mild soap solution and dry immediately. Avoid abrasive cleaners or harsh chemicals.
- **Frame Care:** The metal frame can be cleaned with a damp cloth. Ensure it is dried thoroughly to prevent rust.
- **Hardware Check:** Periodically check all screws and bolts to ensure they remain tight. Re-tighten if necessary to maintain stability.
- **Avoid Direct Sunlight:** Prolonged exposure to direct sunlight may cause fading or material degradation over time.

7. TROUBLESHOOTING

Problem	Possible Cause	Solution
Desk is wobbly/unstable.	Uneven floor; loose screws; foot pads not adjusted.	Ensure desk is on a level surface. Tighten all assembly screws. Adjust the foot pads at the bottom of each leg until stable.
Parts are missing or damaged.	Packaging error; shipping damage.	Do not proceed with assembly. Contact SogesHome customer support immediately with your purchase details.
Difficulty assembling.	Incorrect part orientation; screws not aligning.	Review the assembly instructions carefully. Ensure parts are oriented correctly before tightening screws. Do not force components.

8. SPECIFICATIONS

Feature	Detail
Model	SH-YT-YF-1
Brand	SogesHome
Dimensions (L x W x H)	140 x 60 x 75 cm (55.1 x 23.6 x 29.5 inches)
Item Weight	23.3 kg (51.3 lbs)
Material	Metal frame, Carbon fiber textured desktop (ABS)
Shape	Rectangular
Style	Modern
Special Features	Headphone hook, Cup holder, Large mouse pad, Cable management grommets, Adjustable foot pads



Image 8.1: Top view of the desk surface, highlighting the carbon fiber texture and cable management grommets.

9. WARRANTY & SUPPORT

Warranty Information:

SogesHome products are manufactured to high-quality standards. For specific warranty details regarding your SH-

YT-YF-1 Gaming Computer Desk, please refer to the warranty card included with your purchase or visit the official SogesHome website. The warranty typically covers manufacturing defects under normal use.

Customer Support:

If you encounter any issues, have questions about assembly, or require replacement parts, please contact SogesHome customer service. Have your model number (SH-YT-YF-1) and purchase information ready when contacting support.

Contact information can usually be found on the SogesHome official website or on your purchase receipt.

SogesHome aims to provide competent and friendly customer service.