

Techage PT815G

Techage PT815G Outdoor Security Camera User Manual

MODEL: PT815G

Brand: Techage

Your comprehensive guide to setting up, operating, and maintaining your Techage PT815G security camera.

1. INTRODUCTION

Thank you for choosing the Techage PT815G Plug-in Pan Tilt Security Camera. This advanced outdoor surveillance camera offers 3MP resolution, a 360° view, WiFi connectivity, two-way audio, color night vision with floodlights, and an IP66 waterproof rating, ensuring comprehensive protection for your property. This manual provides detailed instructions to help you maximize your camera's performance and ensure long-lasting operation.

2. WHAT'S IN THE BOX

Please verify that all items are present and in good condition:

- Pan & Tilt Outdoor Camera
- Power Adapter
- Screw Nails
- Warning Sticker
- User Manual

3. PRODUCT OVERVIEW

The Techage PT815G camera is designed for robust outdoor surveillance, offering a wide range of features for enhanced security. Below are the key components and features of your camera:



Figure 3.1: Techage PT815G Outdoor Security Camera. This image shows the camera mounted on a wall with a mobile phone displaying its live view, highlighting its pan and tilt capabilities.



Figure 3.2: Detailed Component Diagram. This diagram labels key parts of the camera including the WiFi Antenna, Plastic IP66 housing, Smart IR-cut, HD 3MP Lens, 4pcs White LEDs, 4pcs Array LEDs, Microphone, RJ45 Port, DC 12V Port, and Reset Button.

Key Features:

- **Pan & Tilt Functionality:** Pan the lens 355° horizontally and tilt it 90° vertically for comprehensive coverage.
- **3MP Resolution:** Captures clear and detailed video footage.
- **Color Night Vision:** Equipped with 4 motion-activated floodlights for full-color viewing even at night.
- **Two-Way Audio:** Built-in microphone and speaker allow for real-time communication.
- **Motion Detection & Auto Tracking:** Receive instant alerts on your phone and automatically track moving objects.
- **IP66 Weatherproof:** Designed to withstand various outdoor weather conditions.
- **Storage Options:** Supports SD card storage (up to 128GB) and cloud storage.
- **Compatibility:** Compatible with NVR, NAS, and third-party software like Blue Iris, iSpy, and Tincam.

4. SETUP GUIDE

Follow these steps to set up your Techage PT815G camera:

4.1. Initial Power-Up and App Installation

1. **Power On:** Connect the camera to a power source using the provided power adapter.
2. **Download App:** Download the *iCSee App* from the App Store (for iOS) or Google Play (for Android).
3. **Create Account:** Open the iCSee App and create a new user account or log in if you already have one.



Figure 4.1: The iCSee App icon, available on both App Store and Google Play, is essential for controlling your camera.

4.2. Connecting to Wi-Fi

4. **Add Device:** In the iCSee App, tap the "+" icon to add a new device. Select "WiFi Camera".
5. **Network Configuration:** Follow the in-app instructions to connect your camera to your 2.4GHz Wi-Fi network. The camera does not support 5GHz networks.
6. **Scan QR Code:** The app will generate a QR code. Present this QR code to the camera lens for scanning. You will hear a confirmation sound once connected.

4.3. Mounting the Camera

The Techage PT815G camera is designed for wall mounting. Use the provided screw nails to securely attach the camera to your desired outdoor location. Ensure the mounting surface is stable and can support the camera's weight.



Figure 4.2: Recommended Installation Locations. The camera can be installed at the front door, in the garden, inside the home, or in parking areas for optimal surveillance.

4.4. Software Updates

It is recommended to keep your camera's software updated for optimal performance and security. You can check for and install updates via the iCSee App.

Video 4.1: Steps for updating software. This video demonstrates the process of updating the camera's firmware through the iCSee mobile application.

5. OPERATING YOUR CAMERA

Learn how to utilize the various functions of your Techage PT815G camera.

5.1. Pan and Tilt Control

Control the camera's viewing angle directly from the iCSee App. You can pan the camera 355° horizontally and tilt it 90° vertically to monitor different areas.



Figure 5.1: Pan and Tilt Capabilities. This image illustrates the camera's ability to pan 355 degrees and tilt 90 degrees, providing extensive coverage.

Video 5.1: Step of cruise control. This video demonstrates how to set up and use the cruise control feature for automated camera movement.

5.2. Motion Detection and Alerts

The camera features intelligent motion detection with human shape recognition. When motion is detected, you will receive instant alerts on your phone. You can also set up specific activity zones to focus on critical areas.



Figure 5.2: AI Detection Capabilities. The camera can intelligently detect and differentiate between persons, vehicles, packages, and pets, reducing false alarms.

5.3. Two-Way Audio

Use the two-way audio feature to communicate with visitors or deter intruders. Simply press and hold the intercom button in the iCSee App to speak through the camera's speaker.



Figure 5.3: Two-Way Audio in Action. This image shows a user communicating through the camera, allowing them to speak to someone at their front door or receive packages.

5.4. Night Vision and Floodlights

The camera provides clear vision even in low-light conditions. Its 4 motion-activated floodlights enable full-color night vision, enhancing visibility and acting as a deterrent.

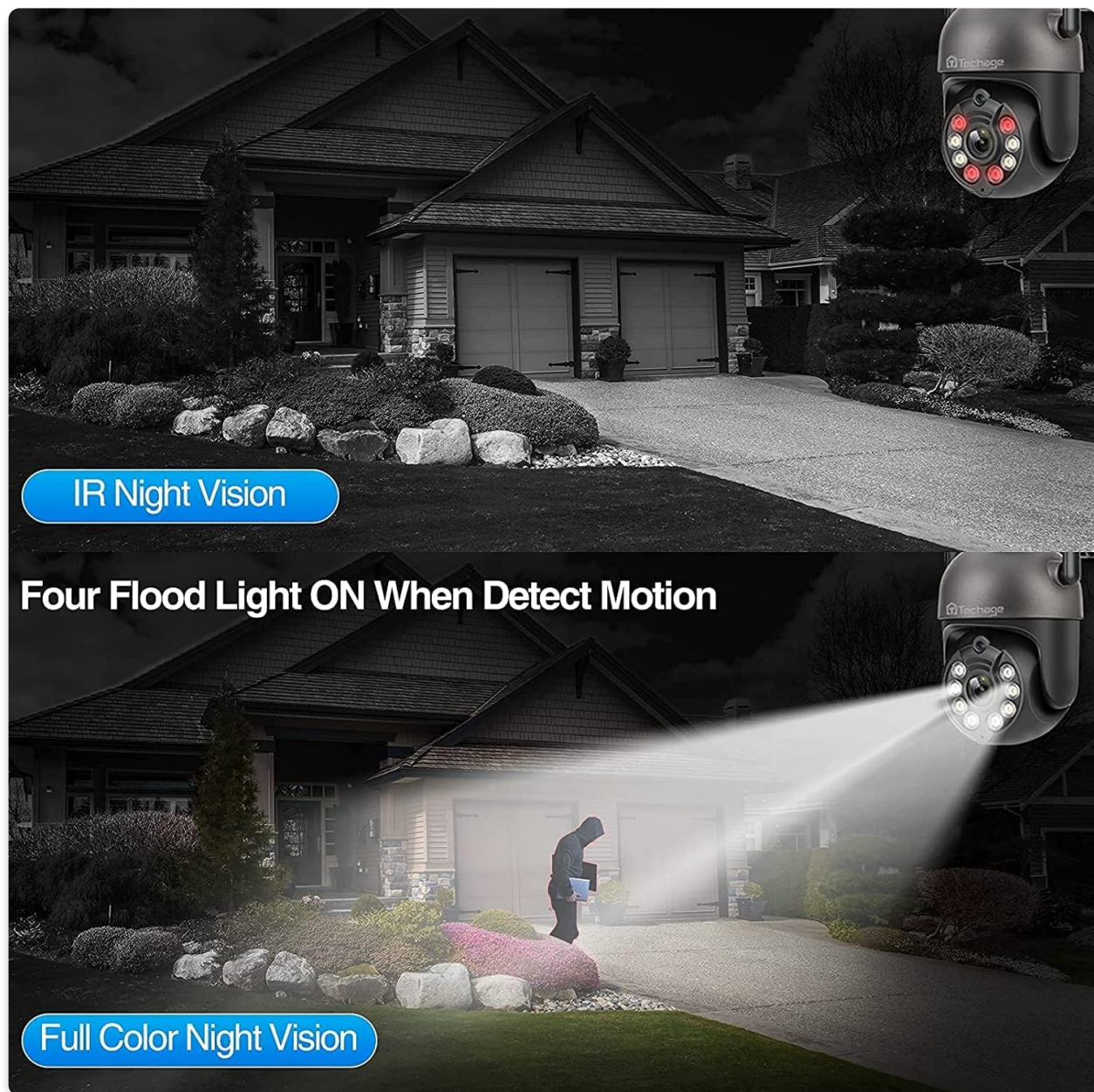


Figure 5.4: Night Vision Modes. This image compares standard IR night vision with the enhanced full-color night vision activated by the camera's floodlights when motion is detected.

5.5. Video Playback and Storage

Recorded footage can be stored on a Micro TF Card (up to 128GB) or via cloud storage. The overwrite function ensures continuous recording by replacing the oldest footage when the storage is full. You can access and playback recordings through the iCSee App.



Figure 5.5: Storage Options. The camera supports local storage via a Micro TF Card (up to 128GB) and offers free 30-day cloud storage for new users.

5.6. Sharing Camera Access

You can share access to your camera's live feed and recordings with family members or trusted individuals through the iCSee App.

Video 5.2: Steps of sharing camera. This video guides you through the process of sharing your camera's access with other users via the iCSee App.

6. MAINTENANCE

Proper maintenance ensures the longevity and optimal performance of your camera.

6.1. Cleaning

- Regularly wipe the camera lens with a soft, clean cloth to remove dust and smudges.
- For the camera body, use a damp cloth to clean any dirt. Avoid using harsh chemicals or abrasive cleaners.

6.2. Weather Resistance

The camera has an IP66 international protection rating, meaning it is protected against dust ingress and powerful water jets. While designed for outdoor use, avoid submerging the camera in water.



Figure 6.1: Weather Resistant Design. The camera is built to be heat resistant, IP66 waterproof, anti-lightning, and cold resistant, ensuring durability in various climates.

7. TROUBLESHOOTING

If you encounter issues with your camera, refer to the following common problems and solutions:

Problem	Possible Cause	Solution
Camera not connecting to Wi-Fi	Incorrect Wi-Fi password; Camera too far from router; 5GHz Wi-Fi network being used.	Ensure correct 2.4GHz Wi-Fi password. Move camera closer to the router. Confirm your router is broadcasting a 2.4GHz network.
Cannot log into iCSee App	Incorrect password; App glitch.	Double-check your password. If issues persist, try resetting your password. Note that certain words or phrases might not be allowed in passwords for security reasons.

Problem	Possible Cause	Solution
Poor image quality	Dirty lens; Low network bandwidth.	Clean the camera lens. Ensure stable and sufficient Wi-Fi bandwidth.
Motion detection not working or too sensitive	Incorrect sensitivity settings; Activity zones not configured.	Adjust motion detection sensitivity in the app. Configure specific activity zones to reduce unwanted alerts.

8. SPECIFICATIONS

Feature	Detail
Model Name	PT815G
Brand	Techage
Connectivity Technology	Wireless (Wi-Fi)
Indoor/Outdoor Usage	Outdoor
Video Capture Resolution	3 MP (2048*1536PX)
Pan/Tilt Range	Pan 355°, Tilt 90°
Night Vision Range	90 Feet
Waterproof Rating	IP66
Storage	Max 128GB Micro TF Card, Cloud Storage
Power Source	Corded Electric (12 Volts DC)
Controller Type	iCSee App
Material	Acrylonitrile Butadiene Styrene (ABS)
Dimensions (L x W x H)	4.13 x 2.4 x 4.13 inches
Item Weight	1.63 pounds
UPC	777647461975

9. WARRANTY AND SUPPORT

Techage is committed to providing high-quality security products and excellent customer service.

9.1. Technical Support

Free technical support is available for your Techage PT815G camera. For assistance with setup, operation, or troubleshooting, please refer to the contact information provided on the product packaging or the official Techage website.

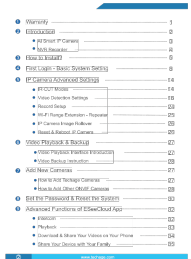




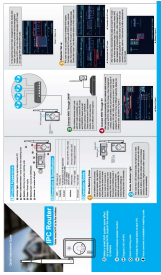
Figure 9.1: Free Technical Support. Techage offers dedicated technical support to assist users with any product-related inquiries or issues.

9.2. Warranty Information

Specific warranty details for your product are typically included with your purchase documentation. Please retain your proof of purchase for any warranty claims. For detailed warranty terms and conditions, refer to the information provided in the product packaging or contact Techage customer service.

Related Documents - PT815G

	<p>Techage IP Camera System User Manual and Installation Guide</p> <p>Comprehensive user manual for the Techage AI Smart IP Camera and NVR Recorder system, covering installation, setup, advanced features, and app integration for enhanced security.</p>
	<p>Techage WiFi AI Camera User Manual - Setup, Features, and Usage</p> <p>Comprehensive user manual for the Techage WiFi AI Camera. Learn how to set up, connect, and use its features like AI detection, two-way talk, and remote viewing on smartphones, web browsers, and PC software.</p>
	<p>Techage Dummy Camera with Solar Powered Flood Light User Manual</p> <p>User manual for the Techage Dummy Camera with Solar Powered Flood Light, detailing product features, testing procedures, optimal installation, technical specifications, and warranty information.</p>



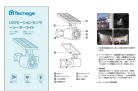
[Techage IPC Router R4S-2 Quick Start Guide](#)

A quick guide to setting up and using the Techage IPC Router R4S-2, enabling wired NVR systems to support wireless IP cameras and extend Wi-Fi transmission range.



[Techage Smart WiFi Battery Camera User Manual](#)

User manual for the Techage Smart WiFi Battery Camera, covering packing list, product appearance, quick start guide, setup, installation, sharing, charging, indicator status, specifications, firmware upgrades, FCC warnings, and FAQs.



[Techage LED](#)

Techage LED IP66