

Manuals+

[Q & A](#) | [Deep Search](#) | [Upload](#)

manuals.plus /

- › [dyplay](#) /
- › [Dyplay 20-Inch Bluetooth Soundbar User Manual](#)

dyplay 1702C

Dyplay 20-Inch Bluetooth Soundbar User Manual

Brand: dyplay | **Model:** 1702C

This manual provides comprehensive instructions for setting up, operating, and maintaining your Dyplay 20-Inch Bluetooth Soundbar. Enhance your audio experience with powerful sound and versatile connectivity.

PRODUCT OVERVIEW

The Dyplay 20-Inch Bluetooth Soundbar (Model 1702C) is designed to upgrade your home theater audio with its 100-watt peak power output. It delivers clear treble, heavy bass, and a wide stereo effect, making it ideal for TVs, smartphones, PCs, and gaming setups. Its compact design allows for flexible placement, either on a desktop or wall-mounted.



Image: The Dyplay 20-Inch Bluetooth Soundbar in black, accompanied by its remote control, showcasing its sleek design.

SETUP GUIDE

What's in the Box?

Before you begin, ensure all components are present:

- 1 x Dyplay Soundbar
- 1 x Power Adapter
- 1 x Remote Controller
- 1 x HDMI Cable
- 1 x Optical Cable
- 1 x Audio Cable (3.5mm)
- 1 x RCA-3.5mm Cable
- 1 x User Manual (this document)

What's in Box ?



1 Remote Controller



2 Power Adapter



3 Digital Optical Cable



6 User Manual



5 HDMI

6 Audio Cable



7 Stereo RCA to 3.5mm Audio Cable

Image: A visual representation of all items included in the soundbar package, such as the soundbar, remote, cables, and power adapter.

Placement Options

The soundbar can be placed on a desktop or mounted on a wall:

- **Desktop Placement:** Place the soundbar directly in front of your TV or monitor on a flat, stable surface.
- **Wall Mount:** The soundbar is designed to be wall-mountable. (Mounting brackets are not included).



Image: Demonstrates the soundbar's versatility with illustrations for both wall-mounted and desktop setups.

Connecting Your Soundbar

The Dyplay soundbar offers multiple connection options:

- **HDMI (ARC):** For optimal audio quality and synchronized volume control with your TV remote. Connect an HDMI cable from the soundbar's HDMI ARC port to your TV's HDMI ARC port. Ensure your TV's audio output is set to HDMI (ARC) and PCM format.
- **Optical:** For high-quality digital audio. Connect an optical cable from the soundbar's OPTICAL port to your TV's Optical Output port. Remember to remove the protective caps from the optical cable ends. Ensure your TV's audio output is set to Optical and PCM format.
- **AUX (3.5mm):** For connecting devices with a 3.5mm audio jack. Use the provided 3.5mm audio cable.
- **USB:** For playing audio from a USB drive.
- **TF Card:** For playing audio from a TF (MicroSD) card.
- **Bluetooth 5.0:** For wireless connection to smartphones, tablets, and other Bluetooth-enabled devices.

Easy to Connect

Easily connect to the sound bar via bluetooth 5.0 or optical input/RAC/AUX, easily work with any devices.



USB



AUX



OPTICAL



TF card

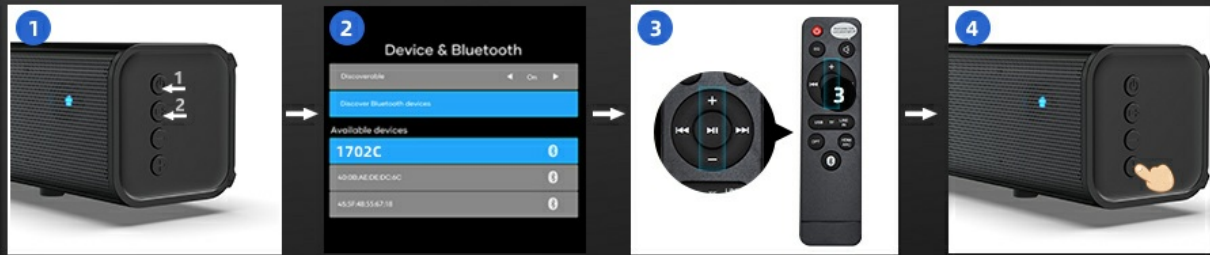


HDMI ARC



Image: A close-up view of the soundbar's rear panel, highlighting the various input ports including USB, AUX, Optical, TF card slot, and HDMI ARC.

EASY CONNECT TV VIA BLUETOOTH



1. Press power button for 3s, then press the function button, Bluetooth Mode automatically

2. Find out this available device on TV's Bluetooth List: 1702C to pair

3. Adjust the TV remote volume to the max firstly

4. Then adjust the volume of soundbar itself on the panel + or - button

HDMI (ARC) or SPDIF CONNECTION

Because the TV'S default Speakers is TV Speakers,when you connect via cable,firstly you need to set on TV: Audio/Sound Setting>Audio/Speaker Output--HDMI(ARC)/Optical>PCM



OR



Image: A step-by-step diagram illustrating how to connect the soundbar via Bluetooth and how to configure TV settings for HDMI (ARC) or SPDIF connections, including setting audio output to PCM.

OPERATING INSTRUCTIONS

Power On/Off

Press the power button on the soundbar or the remote control to turn the unit on or off.

Mode Selection

The soundbar features 4 equalizer modes to optimize your listening experience:

- **Music Mode:** Enhanced for musical playback.
- **Movie Mode:** Optimized for cinematic sound effects.
- **News Mode:** Clearer dialogue for news and talk shows.
- **Gaming Mode:** Immersive sound for gaming.

Switch between modes using the dedicated buttons on the remote control or the soundbar's control panel.

4 Different EQ Modes

Ensured 4 sound modes output is more stable and accurate



Music Mode



Movie Mode



News Mode



Gaming Mode



Image: Illustrates the four distinct equalizer modes (Music, Movie, News, Gaming) available on the soundbar, each with a corresponding visual scene.

Volume Control

Adjust the volume using the volume up/down buttons on the remote control or the soundbar's control panel. If connected via HDMI ARC, your TV remote may also control the soundbar's volume.

Bluetooth Pairing

1. Ensure the soundbar is powered on and in Bluetooth mode (indicated by a specific LED color or voice prompt).
2. On your device (smartphone, tablet, etc.), enable Bluetooth and search for available devices.
3. Select "1702C" from the list of devices to pair.
4. Once paired, the soundbar will indicate a successful connection, and you can stream audio wirelessly.



Image: A graphic illustrating a smartphone wirelessly connected to the soundbar via Bluetooth, with sound waves emanating from the soundbar.

CARE AND MAINTENANCE

To ensure the longevity and optimal performance of your Dyplay soundbar, follow these guidelines:

- **Cleaning:** Use a soft, dry cloth to wipe the surface of the soundbar. Do not use liquid cleaners or abrasive materials, as they may damage the finish.
- **Placement:** Avoid placing the soundbar in direct sunlight, near heat sources, or in areas with high humidity or dust.
- **Ventilation:** Ensure adequate airflow around the soundbar to prevent overheating.
- **Handling:** Handle the soundbar with care. Avoid dropping it or subjecting it to strong impacts.

TROUBLESHOOTING

If you encounter issues with your soundbar, refer to the following common problems and solutions:

Problem	Possible Cause / Solution
No Sound from Soundbar	<p>Ensure the soundbar is powered on and the correct input source is selected.</p> <p>Check all cable connections (HDMI, Optical, AUX) are secure.</p> <p>If using HDMI (ARC) or Optical, verify your TV's audio output settings are configured correctly (e.g., set to HDMI ARC Output / Optical Output and PCM format, not Dolby Audio).</p> <p>Increase the volume on both the soundbar and the connected device (TV, smartphone).</p>
Sound is Not Loud Enough	<p>Increase the volume on the soundbar, your TV/Smartphone, and any connected streaming devices (e.g., Fire Stick, Roku Stick).</p> <p>Ensure the audio source is providing a strong signal.</p>

Problem	Possible Cause / Solution
Bluetooth Pairing Issues	Ensure the soundbar is in Bluetooth pairing mode.
	Make sure your device's Bluetooth is enabled and within range (up to 15 meters).
	Forget the soundbar from your device's Bluetooth list and try pairing again.
	Restart both the soundbar and your Bluetooth device.
Remote Control Not Working	Check and replace the batteries in the remote control.
	Ensure there are no obstructions between the remote and the soundbar's sensor.
	Point the remote directly at the soundbar.

Note: The soundbar does not support Dolby Audio due to copyright issues.

TECHNICAL SPECIFICATIONS

Feature	Specification
Model Name	1702C
Speaker Type	Soundbar
Mounting Type	Wall Mount, Desktop
Speaker Maximum Output Power	100 Watts (Peak)
Surround Sound Channel Configuration	2.0
Connectivity Technology	Bluetooth 5.0, HDMI (ARC), Optical, AUX (3.5mm), USB, TF Card
Wireless Communication Technology	Bluetooth
Bluetooth Range	15 Meters
Product Dimensions (D x W x H)	2.4"D x 20"W x 2.4"H
Item Weight	2.89 pounds
Color	Black
Controller Type	Button, Remote Control
Power Source	Corded Electric
Audio Driver Type	Dynamic Driver

Feature	Specification
Special Features	Wireless, Bluetooth, Wall Mount, 2 Powerful Full-Range Speakers, 4 Equalizer Modes, Remote Control

WARRANTY AND SUPPORT

Every Dyplay soundbar undergoes a strict quality test process. We stand by the quality of our product with a **12-month worry-free after-sales support**.

For any problems or inquiries, please contact us via Amazon. Our customer service team is ready to assist you.

Contact Information:

- Through your Amazon order page for the product.
- Visit the official Dyplay Store on Amazon:[dyplay Store](#)