



Manuals.plus /

› Shkalacar /

› Shkalacar 12V Universal Car Remote Central Locking System User Manual

Shkalacar 12V Universal Car Auto Remote Central Kit

Shkalacar 12V Universal Car Remote Central Locking System User Manual

Model: 12V Universal Car Auto Remote Central Kit

1. INTRODUCTION

This manual provides comprehensive instructions for the installation, operation, and maintenance of your Shkalacar 12V Universal Car Remote Central Locking System. Please read this manual thoroughly before installation and use to ensure proper function and safety. This system is designed to add remote central locking functionality to vehicles that do not have it or to replace an existing system.

2. PRODUCT OVERVIEW

The Shkalacar 12V Universal Car Remote Central Locking System provides convenient remote control over your vehicle's door locks. It includes a main control unit, two remote controls, and a wiring harness for integration into your vehicle's electrical system.



Figure 2.1: Complete Shkalacar Remote Central Locking System Kit, including the control unit, two remote key fobs, and the wiring harness.

2.1. Components

- **Main Control Unit:** The central processing unit that receives signals from the remote controls and operates the door locks.
- **Remote Controls (x2):** Handheld devices for wirelessly locking and unlocking vehicle doors.
- **Wiring Harness:** Pre-wired connector for easy installation and connection to the vehicle's electrical system.



Figure 2.2: Two remote control key fobs for the central locking system. Each fob features lock and unlock buttons.

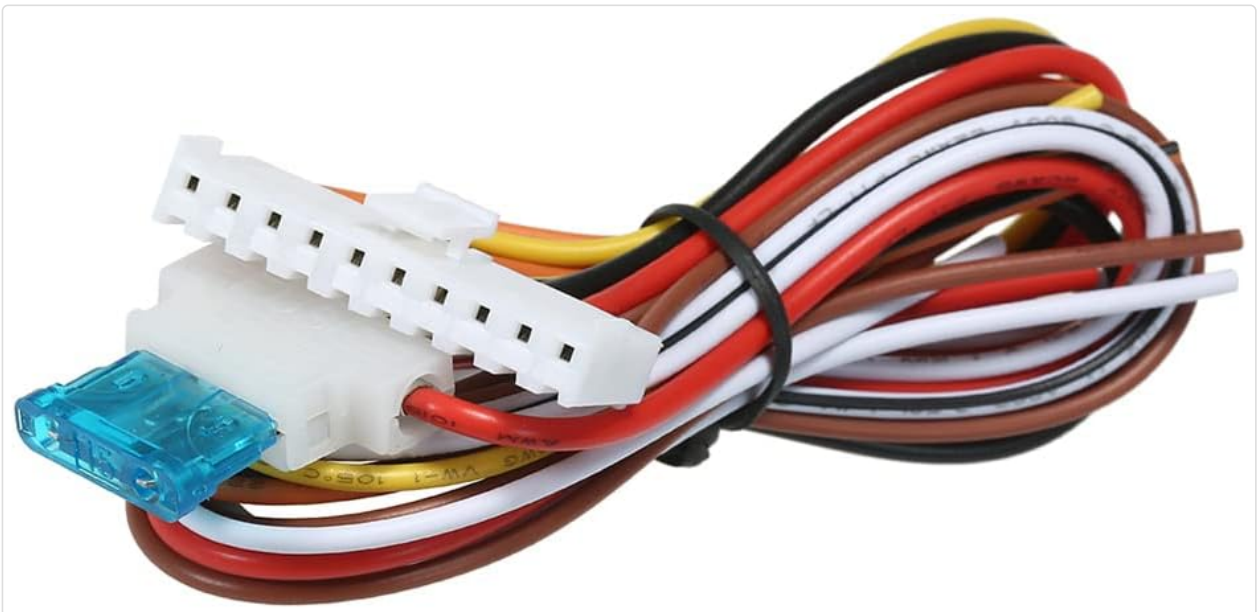


Figure 2.3: The wiring harness with a multi-pin connector and integrated fuse, designed for connecting the control unit to the vehicle's power and locking mechanisms.

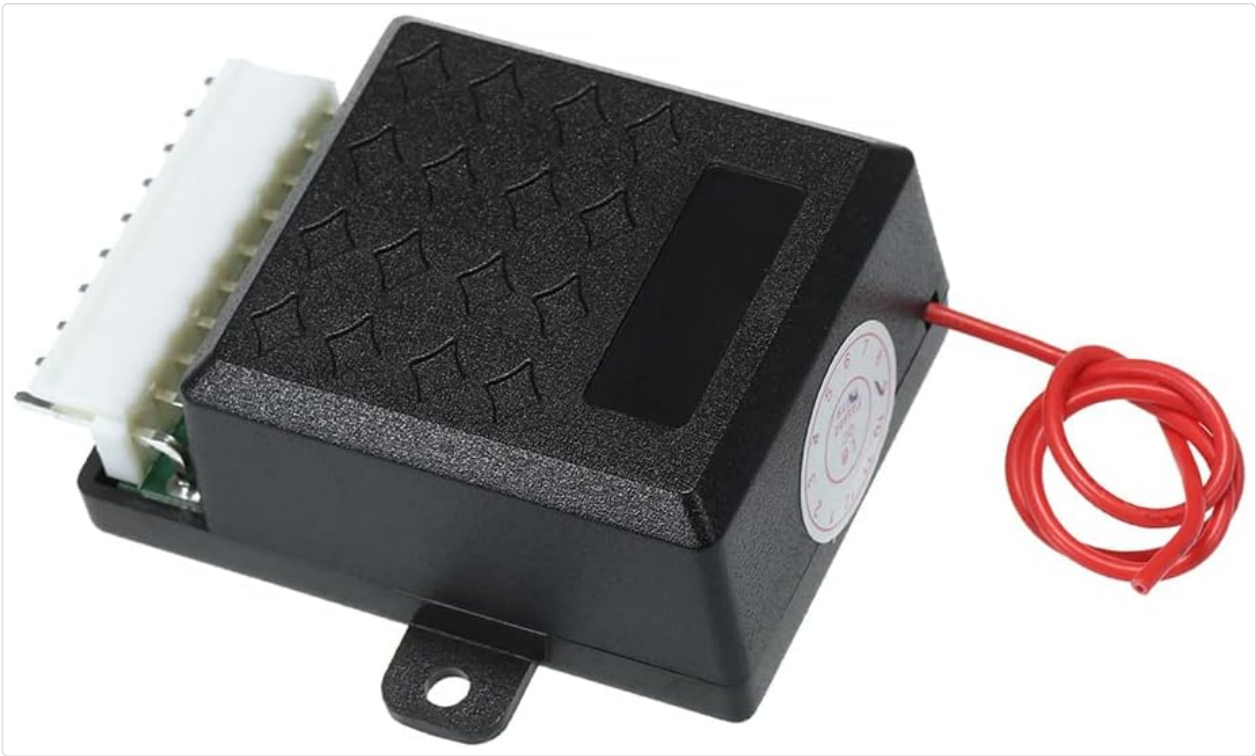


Figure 2.4: Top view of the main control unit, showing its compact design and textured surface.



Figure 2.5: Side view of the main control unit, highlighting the multi-pin connector port for the wiring harness and the antenna wire.

2.2. Key Features

- Remote Lock and Unlock functionality.
- Car Finding feature to locate your vehicle in a parking area.
- Universal compatibility with most 12V vehicle central locking systems.

SHKALACAR

Auto Remote Lock System

Main Unit

- Voltage: 12V ± 2V(DC)
- Static current: ≤12mA
- Frequency: 433.92MHz

Remote Control

- Voltage: 12V
- Current: < 5mA
- Frequency: 433.92MHz



- Control box: approx. 6 * 4 * 2.5cm
- Remote controller: approx. 6 * 3 * 1cm
- Package: 13 * 9 * 6.5cm / 5.1 * 3.5 * 2.6in

Figure 2.6: Overview of system features, including remote door lock/unlock, car window roll-up (if supported by vehicle), remote trunk release (if supported by vehicle), and remote car location.

3. SETUP AND INSTALLATION

Warning: Installation of this product requires knowledge of automotive electrical systems. Incorrect installation can lead to vehicle damage or fire. If you are not confident in your abilities, please seek professional installation.

3.1. Wiring Connection Diagram

Refer to the following diagram for proper wiring connections. Identify your vehicle's central locking system type (electric or pneumatic) and connect accordingly. Ensure all connections are secure and insulated.



Figure 3.1: Detailed wiring connection diagram for the Shkalacar central locking system. This diagram illustrates connections for power, ground, central lock control wires, and direction lights. It also shows the learning button and jumpers for electric (J1) or pneumatic (J2) lock programming.

3.2. General Wiring Guidelines

- **Power (Red Wire):** Connect to a constant +12V power source. Ensure this connection is fused.
- **Ground (Black Wire):** Connect to a reliable chassis ground point.
- **Central Lock Control Wires (Orange, White, Yellow, Orange/Black, White/Black, Yellow/Black):** These wires connect to your vehicle's central locking system. The specific configuration depends on your vehicle's locking mechanism (e.g., positive trigger, negative trigger, 5-wire alternating polarity). Consult your vehicle's wiring diagram or a professional for correct identification.
- **Direction Lights (Brown Wires):** Connect these to your vehicle's turn signal wires to provide visual confirmation of lock/unlock operations.
- **Antenna:** Position the antenna wire away from metal objects for optimal range.

3.3. Remote Control Programming (Learning Button)

The main control unit features a 'Learning Button' (as indicated in Figure 3.1). This button is used to program or re-program the remote controls to the unit. Specific programming steps may vary, but typically involve pressing the learning button on the control unit, then pressing a button on the remote control within a short timeframe to pair them.

4. OPERATING INSTRUCTIONS

Once installed, the system provides simple remote control over your vehicle's central locking.

4.1. Locking the Vehicle

Press the **Lock** button on the remote control. The vehicle's doors will lock, and the direction lights will flash once (if connected).



Figure 4.1: A hand holding the remote control, demonstrating the action of locking or unlocking a vehicle from a distance.

4.2. Unlocking the Vehicle

Press the **Unlock** button on the remote control. The vehicle's doors will unlock, and the direction lights will flash twice (if connected).

4.3. Car Finding Feature

To locate your vehicle in a large parking area, press and hold the **Lock** button (or a dedicated car finding button if present on your remote). The vehicle's direction lights will flash, and the horn may sound (if connected) to help you pinpoint its location.

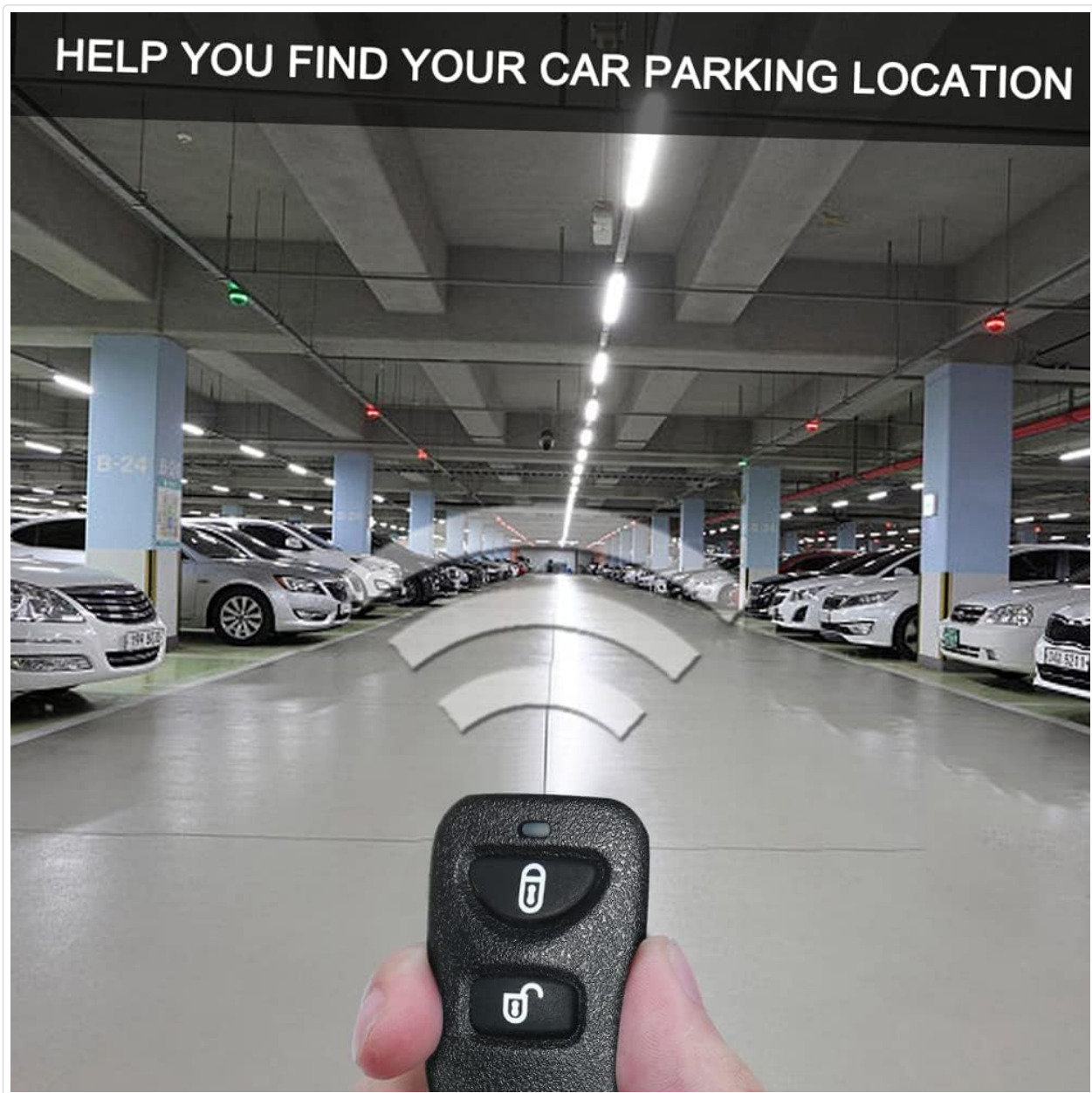


Figure 4.2: A hand holding the remote control in a parking garage, illustrating the use of the car finding feature to locate a parked vehicle.

5. MAINTENANCE

5.1. Remote Control Battery Replacement

The remote controls require 2 Lithium Ion batteries. When the remote's range decreases significantly or it stops responding, it is likely time to replace the batteries. Refer to the remote control's casing for instructions on how to open it and replace the batteries.

5.2. General Care

- Keep the main control unit and remote controls dry and away from extreme temperatures.
- Avoid dropping the remote controls.
- Periodically check wiring connections for security, especially after initial installation.

6. TROUBLESHOOTING

If you encounter issues with your central locking system, refer to the following common problems and

solutions:

- **System not responding to remote:**

- Check remote control batteries and replace if necessary.
- Ensure the remote control is within range of the vehicle.
- Re-program the remote control to the main unit using the learning button.
- Check the main unit's power and ground connections.

- **Doors do not lock/unlock:**

- Verify all central lock control wires are correctly connected to the vehicle's locking system.
- Ensure the vehicle's central locking system is functional manually.
- Check for blown fuses in the wiring harness or vehicle's fuse box.
- For vehicles requiring a double pulse to unlock, this system may not be directly compatible without additional relays.

- **Short circuit or blown fuse:**

- Immediately disconnect power.
- Thoroughly inspect all wiring for exposed wires, incorrect connections, or wires touching metal.
- Ensure the correct fuse rating is used.

If problems persist after troubleshooting, it is recommended to consult a professional automotive electrician.

7. SPECIFICATIONS

Feature	Specification
Main Unit Voltage	12V ± 2V (DC)
Main Unit Static Current	≤12mA
Main Unit Frequency	433.92MHz
Remote Control Voltage	12V
Remote Control Current	< 5mA
Remote Control Frequency	433.92MHz
Remote Control Batteries	2 Lithium Ion batteries required
Maximum Range	Approximately 2 meters (actual range may vary)
Item Weight	5.3 ounces
Package Dimensions	5.2 x 3.7 x 2.52 inches
Compatible Devices	Cars, Trucks

8. SAFETY INFORMATION

Important Safety Notice:



Figure 8.1: Warning label indicating a suffocation hazard. To avoid suffocation, keep all plastic packaging away from babies and children.

Always handle electrical components with care. Ensure proper insulation of all wires to prevent short circuits. Keep all packaging materials, especially plastic bags, away from infants and children to prevent suffocation hazards.

9. WARRANTY AND SUPPORT

For warranty information or technical support, please refer to the contact details provided with your purchase or visit the official Shkalacar website. Keep your proof of purchase for any warranty claims.