

T3 76650

T3 AireBrush Duo User Manual

Interchangeable Hot Air Blow Dry Brush with Two Attachments

INTRODUCTION

The T3 AireBrush Duo is an innovative hot air blow dry brush designed to provide versatile styling options, from sleek and smooth to voluminous and bouncy. Featuring an interchangeable brush design, advanced T3 IonFlow Technology, and 15 heat and speed combinations, this tool delivers shiny, frizz-free results tailored to your hair type and desired style.



Image: The T3 AireBrush Duo handle with both the round brush and paddle brush attachments displayed.

SETUP

Unboxing and Initial Inspection

Upon opening the package, ensure all components are present: the T3 AireBrush Duo handle, the 2.5" round brush attachment, and the 3" paddle brush attachment. Inspect the device and attachments for any visible damage.



Image: The T3 AireBrush Duo handle with both the round brush and paddle brush attachments displayed separately, illustrating the interchangeable design.

Attaching Brush Heads

To attach a brush head, align the desired brush with the handle and push firmly until it clicks into place. To detach, press the release button located on the handle and pull the brush head away. Ensure the brush head is securely locked before use.



Image: Close-up of the interchangeable locking mechanism on the T3 AireBrush Duo handle, indicating how to secure or release brush attachments.

Video: Official guide on preparing hair for styling with the T3 AireBrush Duo, including steps for attaching the brush head.

OPERATING INSTRUCTIONS

Hair Preparation

For optimal results, begin with hair that is 80% dry. For straight or wavy hair, air dry or rough dry until slightly damp. For curly or coily hair, you may skip the rough dry and start with slightly damp hair. Apply your desired heat protectant, volumizing, or smoothing products, then detangle and section your hair into manageable sections.

T3 AIREBRUSH DUO

Interchangeable hot air blow dry brush

How to prep for styling



Step 1: After washing hair, use a turban towel (Try the T3 Turban Towel*) to remove excess moisture.



Step 2: Add your desired heat protectant, volumizing or smoothing products, then detangle hair.



Step 3: For straight and wavy hair, rough dry until hair is slightly damp. For curly and coily hair, skip the rough dry and start with slightly damp hair.



Step 4: Section hair into 4 quadrants, splitting hair from ear to ear, and from forehead to nape. Use sectioning clips (try the T3 Clip Kit*) to hold each section in place.

*Sold separately.

Image: A collage showing four steps for hair preparation before using the T3 AireBrush Duo, including towel drying, applying product, detangling, and sectioning.

Video: Official guide on preparing hair for styling with the T3 AireBrush Duo, including steps for towel drying, applying heat protectant, detangling, and sectioning hair.

Power and Settings

Plug in the device. Use the power button to turn it on. The T3 AireBrush Duo offers 5 heat settings and 3 speed settings, providing 15 customized combinations for all hair types. Adjust settings using the dedicated heat and speed buttons to achieve your desired airflow and temperature.



Image: Close-up of the T3 AireBrush Duo's control panel, showing the power, heat, and speed setting buttons with indicator lights.

Styling with the Paddle Brush (Smooth & Sleek)

For a smooth, sleek look, attach the paddle brush. Take a 2" section of hair from the nape and brush from root to ends, repeating until hair is completely dry. The SmoothGrip Bristles provide optimal tension for control.



Image: A woman using the paddle brush attachment of the T3 AireBrush Duo to smooth her hair, demonstrating a sleek styling technique.



Image: Close-up of the T3 AireBrush Duo's paddle brush attachment, highlighting its bristles designed for smoothing.

Styling with the Round Brush (Volume & Waves)

For bold, voluminous looks or soft waves, attach the 2.5" round brush. Take a 2" section of hair and brush from root to ends, rotating the brush to create desired curl or volume. Repeat until hair is completely dry.

Change up your blowout.

5 heat & 3 speed settings deliver 15 styling combinations for every hair type.

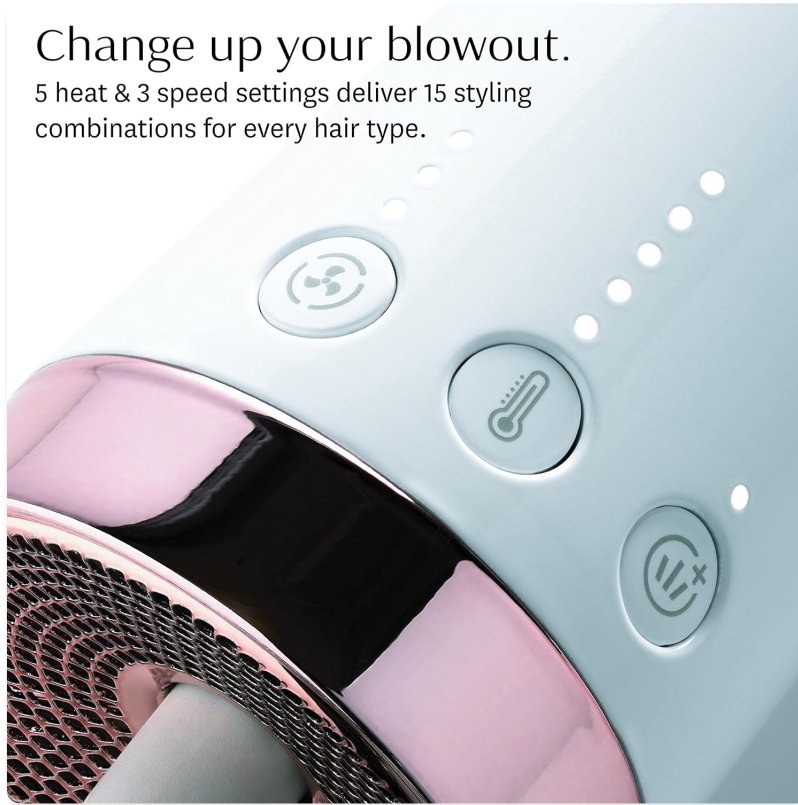


Image: A woman using the round brush attachment of the T3 AireBrush Duo to add volume and waves to her hair.

Achieve bold, voluminous

looks with the round brush.



Image: Close-up of the T3 AireBrush Duo's round brush attachment, showing its design for creating volume and soft waves.

Lock-in Cool Shot

After styling each section, use the Lock-in Cool Shot button to provide a burst of cool air. This helps to set the style and enhance shine, ensuring long-lasting results.

Video: An overview of the T3 AireBrush Duo, demonstrating its features including the cool shot function.

MAINTENANCE

Cleaning the Brush Heads

Regularly remove any trapped hair from the brush bristles. For deeper cleaning, detach the brush head and gently wipe the bristles and base with a damp cloth. Ensure the brush head is completely dry before reattaching or storing.

Storage

Store the T3 AireBrush Duo in a cool, dry place. Avoid wrapping the cord tightly around the device, as this can cause damage over time. It is recommended to store the brush heads detached to protect the bristles.

TROUBLESHOOTING

- **Device Not Turning On:** Ensure the device is properly plugged into a working power outlet. Check the power button and indicator lights.
- **No Airflow or Weak Airflow:** Check for any obstructions in the air intake filter at the bottom of the handle. Clean if necessary.
- **Hair Getting Tangled:** Ensure hair is thoroughly detangled before styling. Use smaller sections of hair.
- **Insufficient Heat:** Verify the correct heat setting is selected for your hair type. Ensure the device has had sufficient time to heat up.
- **Frizziness:** Ensure hair is not overly dry before styling. Use the cool shot feature to set the style. Consider using anti-frizz styling products.

SPECIFICATIONS

Feature	Detail
Product Dimensions	24.25 x 2.5 x 2.5 inches; 1.46 Pounds
Item Model Number	76650
Department	womens
UPC	883349002689
Manufacturer	T3 Micro
ASIN	B09BNM42FK
Country of Origin	China
Brand	T3

Color	White/Rose Gold
Material	Nylon
Wattage	900 watts
Power Source	Corded Electric
GTIN	883349002689

WARRANTY & SUPPORT

The T3 AireBrush Duo is manufactured by T3 Micro (Model: 76650). For detailed warranty information and customer support, please refer to the official user guide provided with your product or visit the manufacturer's website.

You can also access the [Official User Guide \(PDF\)](#) for comprehensive instructions and support.