

T3 76556

T3 SinglePass Curl Professional Curling Iron 1 ¼ inch Graphite User Manual

Model: 76556 | Brand: T3

INTRODUCTION

This manual provides comprehensive instructions for the safe and effective use of your T3 SinglePass Curl Professional Curling Iron. Designed with Digital T3 SinglePass technology and a custom blend ceramic surface, this curling iron is engineered to create shiny, long-lasting, polished curls with ease.



Image: The T3 SinglePass Curl Professional Curling Iron, 1 1/4 inch barrel, in Graphite color.

IMPORTANT SAFETY INFORMATION

Please read all instructions before using this appliance. Keep away from water. Do not use while bathing. Do not place or store appliance where it can fall or be pulled into a tub or sink. Do not place in or drop into water or other liquid. If appliance falls into water, unplug it immediately. Do not reach into the water. Always unplug this appliance immediately after using.

- Do not use near water.
- Always unplug after use.
- Keep out of reach of children.
- Do not wrap the cord around the appliance.
- Allow to cool completely before storing.

PRODUCT FEATURES

- **Digital T3 SinglePass Technology:** Ensures even, consistent heat for fast, one-pass styling and lasting results.
- **Custom Blend Ceramic Surface:** Provides a smooth glide and minimizes heat exposure for shiny, polished curls.
- **Adjustable Heat Settings:** Five precise heat settings (260°F - 410°F) to match various hair types and textures.
- **Long Barrel Design:** Ideal for all hair lengths, making it easier to style longer strands.
- **Lightweight and Ergonomic:** Designed for comfortable and effortless styling.



Image: Diagram illustrating the Ceramic Heater Technology for minimized heat exposure and lasting curls.



T3 SINGLEPASS CURL 1/2"
3/8" Professional Curling Iron
Creates tight, bouncy curls or enhances natural texture.



T3 SINGLEPASS CURL 3/4"
3/4" Professional Curling Iron
Creates delicate, defined curls or enhances natural texture.



T3 SINGLEPASS CURL 1"
1" Professional Curling Iron
Creates classic, polished curls and waves.



T3 SINGLEPASS CURL 1 1/4"
1 1/4" Professional Curling Iron
Creates full, glamorous curls and waves.



T3 SINGLEPASS CURL 1 1/2"
1 1/2" Professional Curling Iron
Creates big, voluminous curls and waves.

Image: A woman holding the T3 curling iron, demonstrating its light and ergonomic design for easy styling.

SETUP

1. Ensure the curling iron is clean and free from debris.
2. Place the curling iron on a heat-resistant surface.
3. Plug the appliance into a suitable electrical outlet.



Image: The T3 curling iron with its power cord, ready for connection.



Image: The T3 curling iron resting on its integrated stand, ensuring safe placement during use.

OPERATING INSTRUCTIONS

1. Power On and Heat Selection

1. Press and hold the power button until the lights illuminate.
2. Twist the dial at the base of the handle to select your desired heat setting. The lights will indicate the chosen level.
3. Allow the iron to heat up. The lights will stop blinking when the selected temperature is reached.

Ceramic Heater Technology

for minimized heat exposure, but perfect,
lasting curls.



Image: A close-up view of the T3 curling iron's SmartTwist Dial with five precise heat settings, indicating options for fine, medium, and coarse hair textures.

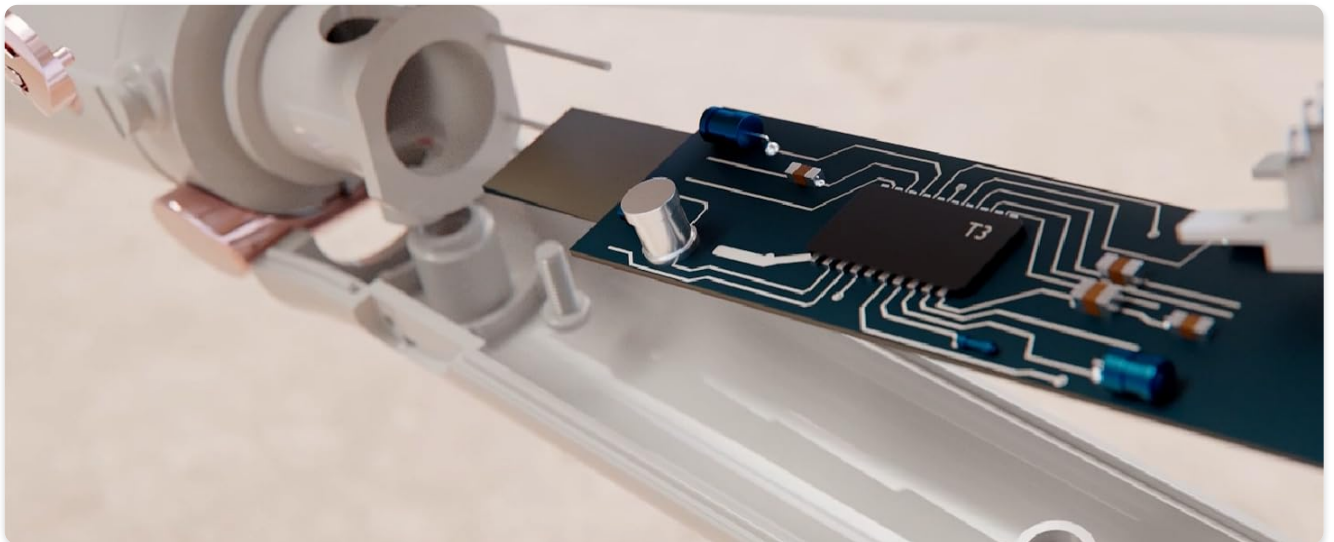


Image: A visual guide demonstrating the five precise heat settings suitable for various hair types and textures.

2. Curling Technique

1. Ensure hair is dry and detangled.
2. Take a 1-2 inch section of hair.
3. Secure the ends of the hair section underneath the clamp, halfway between the root and tip.
4. Slowly close and open the iron, twisting it back toward the scalp to feed hair into the iron until reaching the ends.
5. Hold for a few seconds, then release the clamp and gently slide the iron out.
6. Allow the curl to cool completely before touching or styling to set the shape.

Light & ergonomic
design for effortless, easy styling.



Image: A woman using the T3 curling iron to create a curl, showing the hair wrapped around the barrel.

Full and glamorous
curls that last.



Image: A full view of a woman demonstrating the curling process with the T3 iron.

TOUR T3 SINGLEPASS CURL



Image: Example of full and glamorous curls achieved with the curling iron, designed for lasting results.



Image: Before and after comparison showing blonde hair transformed into polished curls using the T3 SinglePass Curl.

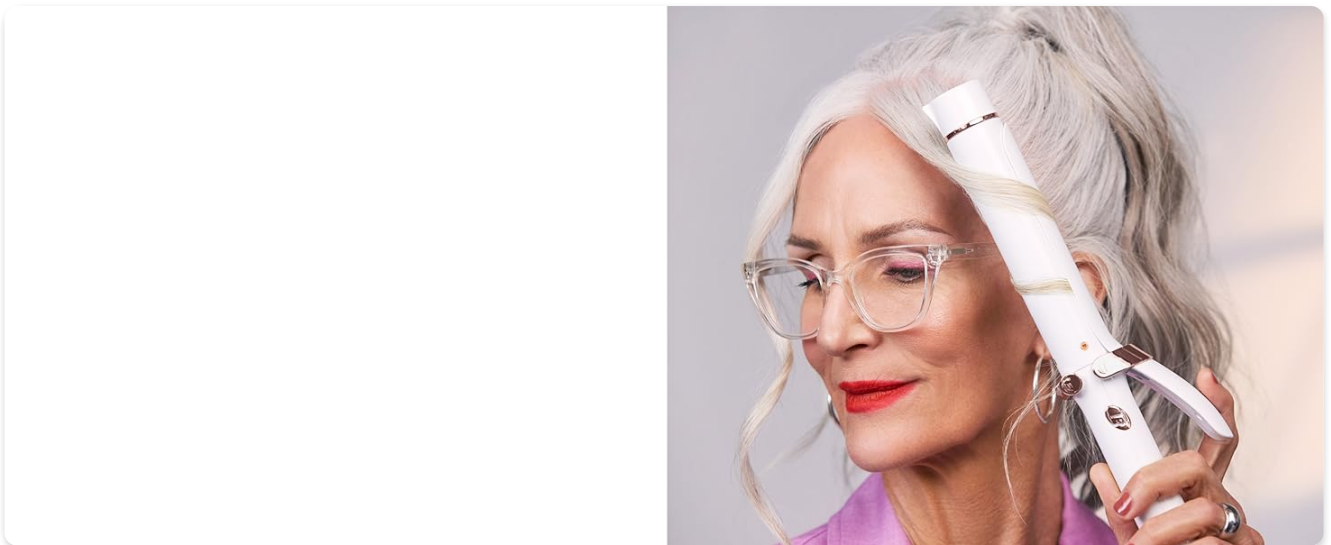


Image: Before and after comparison showing dark hair transformed into polished curls using the T3 SinglePass Curl.

3. Power Off

After use, press and hold the power button until the lights turn off. Unplug the appliance from the electrical outlet and allow it to cool completely before storing.

Your browser does not support the video tag.

Video: Official T3 Micro demonstration of the T3 SinglePass Curl 1 1/4" Professional Curling Iron, showcasing its features and ease of use.

MAINTENANCE

- Ensure the appliance is unplugged and completely cool before cleaning.
- Wipe the barrel and handle with a soft, damp cloth. Do not use abrasive cleaners or solvents.
- Do not immerse the appliance in water.
- Store in a dry place, away from moisture and direct sunlight.

TROUBLESHOOTING

Problem	Possible Cause	Solution
Appliance does not turn on.	Not properly plugged in or power button not activated.	Ensure the appliance is securely plugged into a working outlet. Press and hold the power button until lights illuminate.
Hair is not curling effectively.	Incorrect heat setting for hair type, hair not fully dry, or insufficient hold time.	Adjust to a higher heat setting (if suitable for your hair type). Ensure hair is completely dry. Increase hold time slightly.
Hair snags or pulls.	Hair is tangled or not properly sectioned.	Ensure hair is thoroughly detangled before styling. Work with smaller, manageable sections.

SPECIFICATIONS

Brand: T3

Model Number: 76556

UPC: 883349002528

Barrel Size: 1 ¼ inch

Color: Graphite

Material: Ceramic

Product Dimensions: 13.25 x 1.6 x 2.5 inches

Item Weight: 14.2 ounces

Heat Settings: 5 adjustable settings (260°F - 410°F)

WARRANTY AND SUPPORT

For warranty information, product registration, or technical support, please refer to the official T3 Micro website or contact their customer service. Keep your purchase receipt for warranty claims.

Protection plans are available for purchase separately. Refer to product listing for details on 2-Year, 3-Year, and Complete Protect plans.

