

HTC HTC-Emo

HTC True Wireless Earbuds Plus User Manual

Model: HTC-Emo | Brand: HTC

INTRODUCTION AND OVERVIEW

The HTC True Wireless Earbuds Plus are designed to provide a superior audio experience with advanced features for daily use. These earbuds incorporate Active Noise Cancellation (ANC) and Environmental Noise Cancellation (ENC) for crystal-clear sound and calls. With Bluetooth 5.0 and Enhanced Data Rate (EDR), they offer stable audio transmission and low power consumption. The IPX5 water resistance ensures durability against sweat and light rain, making them suitable for various activities.

Enjoy up to 6 hours of listening on a single charge, with a total playback time of up to 24 hours using the included charging case. The earbuds feature intuitive touch controls for easy management of audio and calls, and are widely compatible with iOS, Android, and Windows devices.



Figure 1: HTC True Wireless Earbuds Plus and Charging Case. The earbuds are white, with the HTC logo visible on each. The oval-shaped charging case is also white, featuring three indicator lights on the front.

WHAT'S IN THE BOX

Upon opening your HTC True Wireless Earbuds Plus package, you should find the following items:

- HTC True Wireless Earbuds Plus (Left and Right)
- Charging Case
- USB Charging Cable
- Multiple Sizes of Ear Tips (Small, Medium, Large)

SUPERIOR SOUND SYSTEM

Engineered for an unrivaled audio experience for the sole purpose of superior sound quality.



Figure 2: Contents of the HTC True Wireless Earbuds Plus package. The image displays the earbuds, their charging case, a USB charging cable, and three pairs of ear tips in different sizes, all neatly arranged next to the product box.

SETUP

1. Charging the Earbuds and Case

Before first use, it is recommended to fully charge the earbuds and the charging case. Place the earbuds into their

respective slots in the charging case. Connect the USB charging cable to the Type-C port on the charging case and plug the other end into a compatible USB power source.

The indicator lights on the charging case will show the charging status. Once fully charged, the lights will indicate a full battery. A full charge provides up to 6 hours of listening time for the earbuds, with the charging case extending total playback to 24 hours.

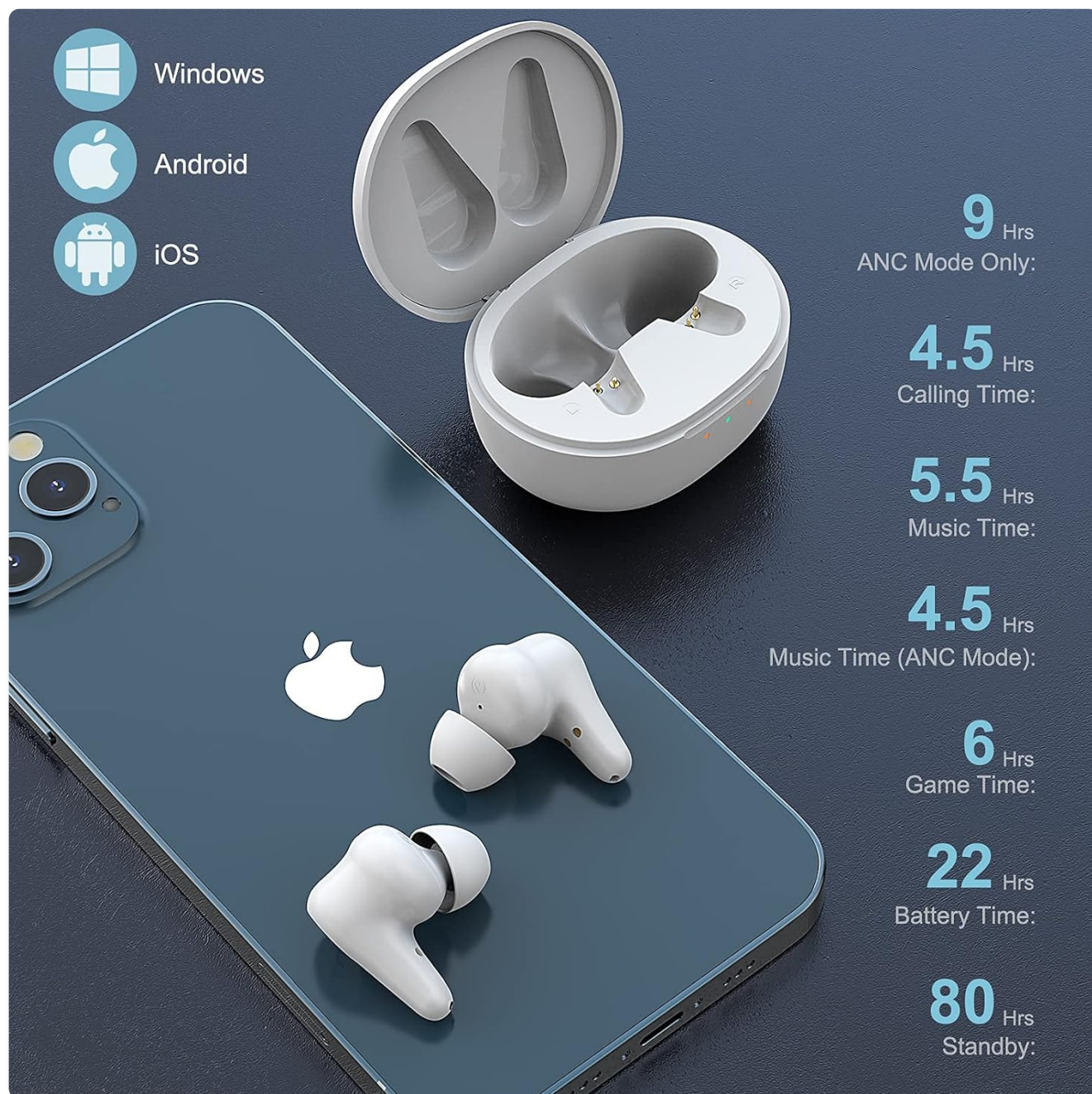
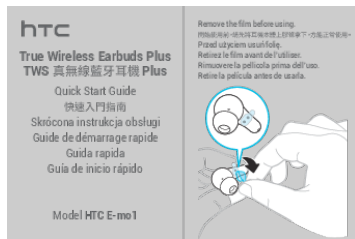


Figure 3: Overview of HTC Earbuds battery life. The image shows the earbuds and case next to a smartphone, detailing various battery durations: 9 hours ANC mode only, 4.5 hours calling time, 5.5 hours music time, 4.5 hours music time (ANC mode), 6 hours game time, 22 hours battery time with case, and 80 hours standby.

2. Bluetooth Pairing

To pair your HTC True Wireless Earbuds Plus with your device:

1. Ensure the earbuds are in the charging case and the case lid is open.
2. On your device (smartphone, tablet, laptop), go to the Bluetooth settings.
3. Search for new devices. The earbuds should appear as Documents - HTC – HTC-Emo



[\[pdf\]](#) Quick Start Guide Guide Warranty

Quick start guide HTC True Wireless Earbuds Plus Guide Downloads SUPPORT UK TWS

E mo1 QSG d14 htc Web materials |||

True Wireless Earbuds Plus TWS Plus Quick Start Guide Skrcona instrukcja obsługi Guide de dmarrage rapide Guida rapida Gua de inicio rpido Remove the film before using. Przed uyciem usu foli. Retirez le film avant de l'utiliser. Rimuovere la pellicola prima dell'uso. Retire la pelcula antes de u...

lang:en score:35 filesize: 967.21 K page_count: 19 document date: 2021-10-06