

AZDOME M300S

AZDOME M300S 4K Dash Cam User Manual

Model: M300S

1. PRODUCT OVERVIEW

The AZDOME M300S is a high-performance 4K dash camera system designed to provide comprehensive recording for your vehicle. It features front and rear camera recording capabilities, built-in 5G WiFi for seamless connectivity, integrated GPS for tracking, and convenient voice control. This manual provides detailed instructions for installation, operation, and maintenance to ensure optimal performance of your device.



Image: The AZDOME M300S 4K Dash Cam, showcasing its compact design, the included 64GB SD card, and a smartphone displaying the live view and GPS tracking via the companion app.

2. PACKAGE CONTENTS

Please verify that all items are present in your package:

- AZDOME M300S Dash Cam (Front Unit)
- Rear Camera
- Power Cable (Car Charger)
- 64GB Micro SD Card
- User Manual
- Adhesive Mount
- Wiring Tools

3. SETUP AND INSTALLATION

3.1 Inserting the Micro SD Card

Before first use, insert the provided 64GB Micro SD card into the dash cam's card slot. Ensure the card is inserted correctly until it clicks into place. It is recommended to format the SD card within the dash cam settings upon first use and monthly thereafter for optimal performance.



Image: Close-up view of the AZDOME M300S dash cam showing the slot for the 64GB Micro SD card, indicating proper insertion.

3.2 Mounting the Dash Cam

1. Clean the windshield area where the dash cam will be mounted.
2. Attach the adhesive mount to the dash cam.
3. Peel off the protective film from the adhesive mount and firmly press it onto the chosen spot on your windshield, ideally behind the rearview mirror for an unobstructed view.

3.3 Connecting Power

Connect the provided car charger to your vehicle's 12V power outlet (cigarette lighter socket) and plug the other end into the dash cam's power input. The dash cam will automatically power on and begin recording when the vehicle's ignition is turned on.

3.4 Rear Camera Installation

Connect the rear camera cable to the main dash cam unit. Route the cable neatly along the vehicle's interior trim to the rear windshield. Mount the rear camera on the rear windshield using its adhesive mount, ensuring a clear view of the road behind.

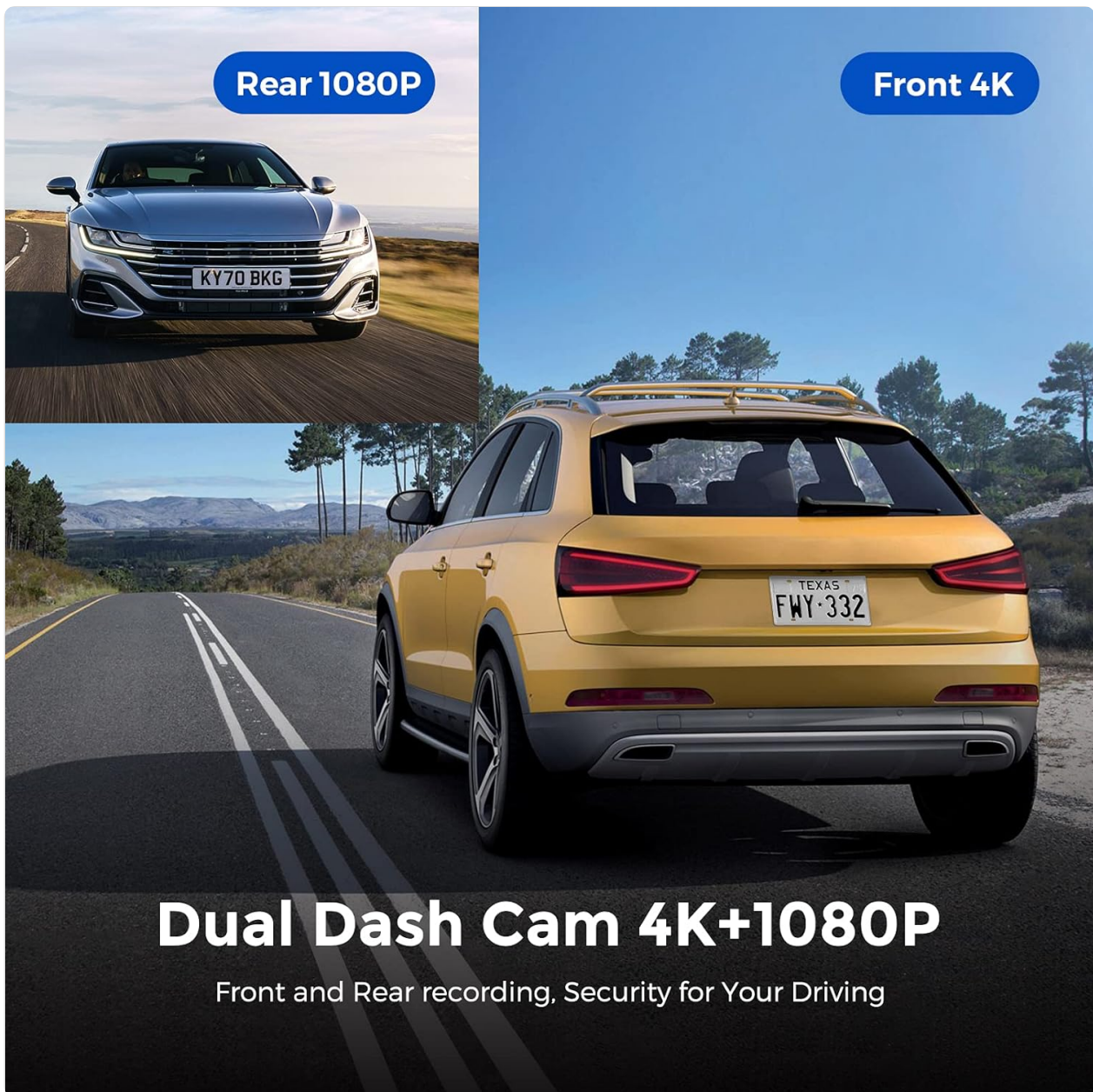


Image: Illustration of the dual dash cam setup, showing the front camera capturing 4K footage and the rear camera capturing 1080P footage, providing comprehensive coverage.

3.5 App Connection (WiFi)

The AZDOME M300S features built-in 5G WiFi for easy access to recordings and settings via the AZDOME app on your smartphone.

1. Download the "AZDOME" app from the App Store (iOS) or Google Play Store (Android).
2. On your smartphone, go to WiFi settings and connect to the dash cam's WiFi network (e.g., "M300S_XXXXXX"). The default password is **12345678**.
3. Open the AZDOME app. For iOS users, ensure "Wireless Data" is set to WLAN and mobile data is turned off for the app.
4. Select "Check Real-time Video" to view live footage, access recorded files, and adjust settings.

M300S APP WiFi Connect Guide

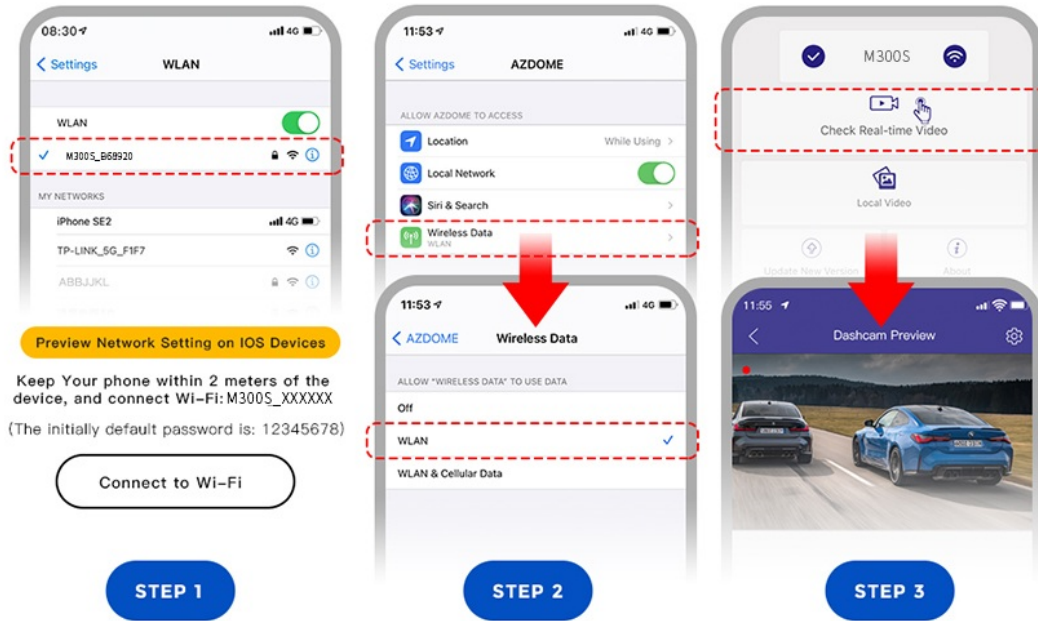


Image: A three-step guide illustrating how to connect the AZDOME M300S dash cam to a smartphone via WiFi using the AZDOME app, showing WiFi settings and app interface.

4. OPERATING INSTRUCTIONS

4.1 Automatic Recording

Once connected to power, the dash cam will automatically power on and begin continuous loop recording when your vehicle starts. It will automatically power off when the vehicle is turned off.

4.2 Voice Control

The M300S supports voice commands for hands-free operation. Currently, only English commands are supported. Common commands include:

- "Take a picture"
- "Turn on WiFi"
- "Turn off WiFi"
- "Start recording"
- "Stop recording"

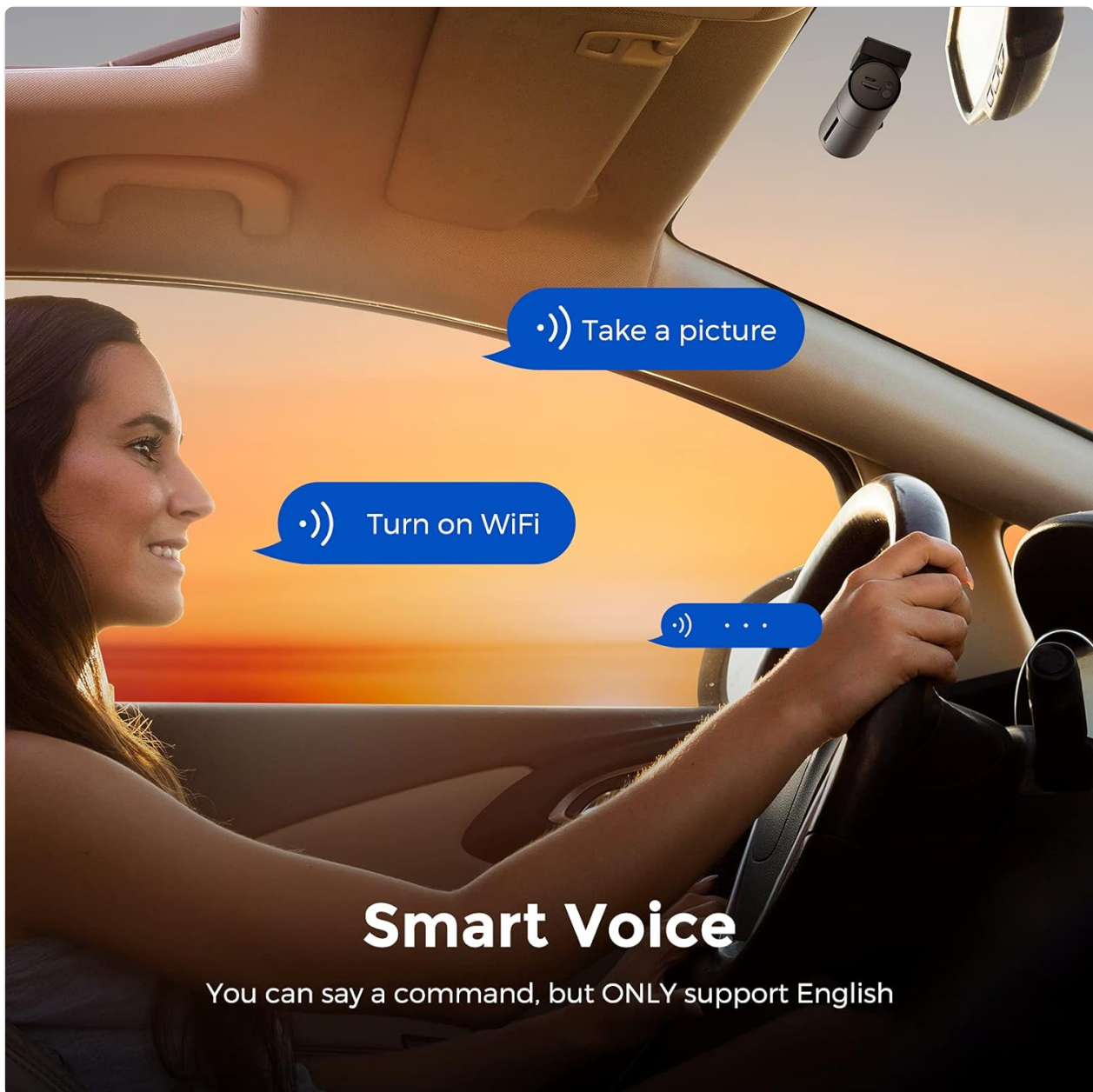


Image: A driver interacting with the AZDOME dash cam using voice commands, illustrating the hands-free operation feature.

4.3 Built-in GPS Tracking

The integrated GPS module records your driving route, speed, and location data. This information can be viewed and analyzed using the AZDOME GPS Player software on your computer (available for Windows and Mac). This feature provides valuable evidence in case of an incident.

Built-in GPS Tracker

Keep track of every journey and playback on "AZDOME" GPS player



AZDOME Player Available for



+



Image: A laptop screen showing the AZDOME GPS Player interface, displaying recorded video footage alongside a map with the tracked driving route and speed data.

4.4 G-Sensor and Emergency Recording

The built-in G-Sensor detects sudden impacts or collisions. When triggered, it automatically locks the current video segment, preventing it from being overwritten by loop recording. This ensures critical footage is preserved.

4.5 Parking Monitor

The Parking Monitor feature provides surveillance when your vehicle is parked. If an impact is detected while parked, the dash cam will automatically activate and record a short video. For 24-hour parking monitoring, the dash cam must be connected to a continuous power source via a hardwire kit (sold separately).

4.6 Loop Recording

The dash cam records video in continuous loops. When the SD card is full, the oldest unlocked video files will be automatically overwritten to make space for new recordings. Locked emergency videos are protected from being overwritten.

4.7 Night Vision and WDR

Equipped with advanced Night Vision and Wide Dynamic Range (WDR) technology, the M300S captures clear and detailed video footage even in low-light conditions or challenging lighting environments, such as tunnels or bright glare.



Image: A demonstration of the dash cam's night vision, highlighting its ability to capture clear details like license plates in dark conditions.

5. MAINTENANCE

5.1 SD Card Formatting

To maintain optimal recording performance and prevent data corruption, it is recommended to reformat the Micro SD card monthly using the dash cam's settings. This clears all data and prepares the card for continued use.

5.2 Cleaning the Lenses

Regularly clean the front and rear camera lenses with a soft, lint-free cloth to ensure clear video quality. Avoid using abrasive materials or chemical cleaners that could damage the lens coating.

6. TROUBLESHOOTING

This section addresses common issues you might encounter with your AZDOME M300S dash cam.

Issue	Possible Cause / Solution
Cannot connect to WiFi / App	Ensure your phone's mobile data is turned off when connecting to the dash cam's WiFi. Reinstall the app if necessary. Ensure you are within 2 meters of the device.
Dash cam not turning on / recording	Check power connection. Ensure the car charger is properly plugged into both the vehicle's outlet and the dash cam. The dash cam requires continuous external power to operate (it has a super capacitor for time memory, not a large battery).

Issue	Possible Cause / Solution
SD card error / Recording stops	Format the SD card within the dash cam settings. Ensure you are using a Class 10 or U3 above Micro SD card. Replace the SD card if the issue persists.
Parking Monitor drains car battery	The Parking Monitor feature requires a hardwire kit (sold separately) for continuous power. If your vehicle is parked for extended periods without driving, the hardwire kit may draw power. Consider disconnecting the dash cam or the hardwire kit if not driving for several days.
Voice commands not working	Ensure you are speaking clearly and loudly. Only English commands are supported. Check for firmware updates that might improve voice recognition.

7. SPECIFICATIONS

Feature	Detail
Model Name	M300S
Product Dimensions	8.66 x 4.8 x 2.52 inches
Item Weight	1.52 pounds
Video Capture Resolution	2160p (4K UHD)
Connectivity Technologies	Wi-Fi (5G), USB
Special Features	G-Sensor, Parking Monitor, Night Vision, Built-in 5G WiFi, Built-In GPS, Voice Control
Included Components	User Manual, Memory Card (64GB)
Mounting Type	Adhesive Mount
Battery Type	Super Capacitor (for time memory)

8. WARRANTY AND SUPPORT






AZDOME provides a 12-month warranty for the M300S dash cam. You may be eligible to extend this warranty to 18 months by registering your product. AZDOME also offers firmware updates, PDF user manuals, and camera accessories. For reliable performance, it is recommended to use SanDisk brand Class 10 or U3 Micro SD cards.

For technical support or inquiries, please contact AZDOME customer service. They offer 7*24 hours technical support.

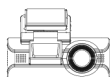
Visit the official AZDOME store for more information and support:[AZDOME Official Store](#)

© 2023 AZDOME. All rights reserved.

Related Documents - M300S

	<p>AZDOME PG17 Pro 4K+2.5K Mirror Dash Cam User Manual</p> <p>An introduction and user manual for the AZDOME PG17 Pro mirror dash cam, detailing its features, installation, specifications, and operation. Learn how to use your 4K+2.5K dash cam for optimal performance.</p>
	<p>AZDOME M63 Dash Cam Owner's Manual</p> <p>Comprehensive owner's manual for the AZDOME M63 dash cam, covering installation, features, settings, troubleshooting, and firmware updates. Learn how to set up and use your smart driving companion.</p>
	<p>AZDOME M01 Pro Dash Cam: Rear Camera Playback Instructions</p> <p>Instructions for accessing rear camera video playback on the AZDOME M01 Pro dash cam. Learn how to long press to view rear camera footage. Model: AZD240603-7312.</p>
	<p>AZDOME M550 Pro User Manual - 3-Channel Dash Cam Installation & Operation Guide</p> <p>Comprehensive user manual for the AZDOME M550 Pro 3-channel dash cam, covering installation, operation, specifications, and troubleshooting. Learn how to set up and use your M550 Pro dashcam for optimal driving safety and recording.</p>
	<p>AZDOME M01 Max 2 Channel Dash Cam User Manual</p> <p>Comprehensive user manual for the AZDOME M01 Max 2 Channel Dash Cam, detailing specifications, installation, features, and button functions. Includes setup guide and customer service information for optimal vehicle safety.</p>

User Manual
M550 Pro



AZDOME
www.azdome.com
Enjoy Your Smart Driving

©2019 AZDOME

[AZDOME M550 Pro 4K Dash Cam User Manual and Installation Guide](#)

Comprehensive user manual for the AZDOME M550 Pro 4K Dash Cam, covering installation, operation, specifications, and troubleshooting. Learn how to use your M550 Pro dashcam for smart driving.