

Manuals+

[Q & A](#) | [Deep Search](#) | [Upload](#)

manuals.plus /

- › [Ideal](#) /
- › [Ideal Paddington Bear - The Big Clean-up Board Game Instruction Manual](#)

Ideal 577 11033

Ideal Paddington Bear - The Big Clean-up Board Game

INSTRUCTION MANUAL

Model: 577 11033 | Brand: Ideal



Image: Front view of the game box, featuring Paddington Bear and game components.

Introduction

Welcome to The Big Clean-up Game! Paddington Bear has left a trail of marmalade, and it's up to you to help him clean it up. This board game is designed for 2 to 4 players, aged 4 and above, encouraging turn-taking, collaborative play, and simple problem-solving.

The objective of the game is to be the first player to collect all the marmalade pieces required to complete the image on your bread board.

Game Components

Before starting, ensure all the following components are present in your game box:

- 1 Game Board
- 1 Pressmatic Dice Popper
- 4 Character Playing Pieces
- 4 Player Game Boards (toast slices)
- 24 Marmalade Pieces (6 for each player)



Image: All game components, including the board, dice popper, character pieces, toast boards, and marmalade pieces, arranged on a surface.

Setup Instructions

1. Place the game board in the center of the playing area.
2. Each player chooses a character playing piece and places it on the "Start" space on the game board.
3. Each player takes one toast slice game board and six marmalade pieces. Place your six marmalade pieces next to your toast board.
4. Place the Pressmatic Dice Popper within easy reach of all players.
5. The youngest player starts the game. Play proceeds clockwise.

How to Play

The game involves moving around the board, collecting marmalade pieces, and completing your toast board.

Player Turn:

1. On your turn, press the Pressmatic Dice Popper to roll the dice.
2. Move your character playing piece clockwise around the board the number of spaces indicated by the dice.
3. **Landing on a Dice Image Space:** If you land on a space that has a dice image, you get to pop the dice again.
 - If the number rolled on this second pop matches a number on one of your marmalade pieces, you can take that marmalade piece and place it onto the corresponding space on your toast board.
 - If the number does not match any of your remaining marmalade pieces, or if you have already collected that piece, your turn ends.
4. **Landing on Other Spaces:** If you land on a space without a dice image, your turn ends.

Winning the Game:

The first player to successfully collect all six marmalade pieces and place them onto their toast board wins The Big Clean-up Game!



Image: A close-up of the game board during play, showing character pieces, the dice popper, and toast boards with some marmalade pieces collected.

Maintenance

- Keep all game components clean and dry. Wipe with a soft, dry cloth if necessary.
- Store the game in its original box in a cool, dry place to prevent damage to the board and pieces.
- Avoid exposing the game to direct sunlight or extreme temperatures.

Troubleshooting

If you encounter any issues while playing The Big Clean-up Game, consider the following:

- **Unclear Rules:** Re-read the "How to Play" section carefully. Ensure all players understand the movement and marmalade collection rules. The game is designed to be straightforward for young players.
- **Missing Components:** If any game pieces are missing upon opening the box, please contact the manufacturer's customer support for assistance.
- **Dice Popper Malfunction:** Ensure the dice popper is pressed firmly and released quickly for optimal dice roll. If it consistently fails to roll the dice, contact customer support.

Specifications

Product Dimensions	3.94 x 3.94 x 3.94 inches
Item Weight	15.9 ounces
Model Number	577 11033
ASIN	B09BD9B44Z

Recommended Age	4+ Years (as per product packaging)
Language	English
Manufacturer	abgee (Ideal)



Image: Back view of the game box, showing game details, components list, and manufacturer information.

Safety Information

- Keep away from naked flame.
- This game contains small parts which may present a choking hazard for children under 3 years. Adult supervision is recommended for all young players.

Warranty and Support

For warranty information, product support, or to report missing components, please contact the manufacturer directly.

- **Manufacturer:** abgee (Ideal)
- **Email:** customerservices@johnadams.co.uk
- **Website:** www.idealboardgames.com



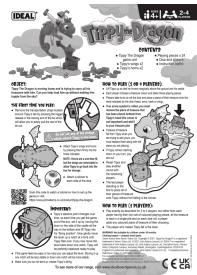
[Gassy Gus Board Game: Instructions and Gameplay](#)

Learn how to play Gassy Gus, the fun board game from IDEAL. Includes setup, rules, gameplay, and battery safety information.



[Soggy Moggy: Official Game Instructions and How to Play Guide](#)

Learn how to set up and play the fun Soggy Moggy board game by IDEAL. Includes game contents, rules, caring tips, and battery safety information for this exciting children's water game.



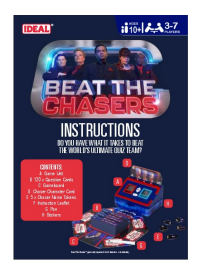
[Tippy the Dragon Game: Instructions and How to Play](#)

Learn how to set up and play Tippy the Dragon, a fun game for 2-4 players. This guide includes object, first-time setup, how to play for 3-4 players, and how to play for 2 players. Discover the game's components and important tips for balanced play.



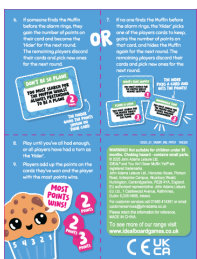
[D-Koi Board Game: How to Play and Rules](#)

Official rules and instructions for the IDEAL D-Koi board game. Learn how to play this fun family game of bluffing and quick thinking.



[Beat The Chasers Board Game Instructions](#)

Official instructions for the Beat The Chasers board game, detailing setup, gameplay, scoring, and battery safety. Learn how to play and beat the Chasers!



[You Ain't Seen Muffin Yet! Board Game Instructions & Rules | IDEAL](#)

Learn how to play You Ain't Seen Muffin Yet!, the fun hide 'n' seek board game by IDEAL. Includes setup, gameplay rules, and timer settings for family fun.