



Manuals.plus /

› DAJDAH /

› DAJDAH RP-AP088-F1 Replacement Filter User Manual for RENPHO Air Purifiers

DAJDAH RP-AP088-F1

DAJDAH RP-AP088-F1 Replacement Filter User Manual

Compatible with RENPHO RP-AP088B and RP-AP088W Air Purifiers

Brand: DAJDAH | Model: RP-AP088-F1

1. INTRODUCTION

The DAJDAH RP-AP088-F1 is a high-efficiency True HEPA H13 replacement filter designed to maintain optimal air quality in your home. This filter is specifically engineered to be compatible with RENPHO RP-AP088B and RP-AP088W Air Purifiers, providing a seamless fit and performance comparable to the original filters.

This manual provides essential information on the filter's features, installation, maintenance, and specifications to ensure you get the best performance from your air purification system.

2. PRODUCT FEATURES

The RP-AP088-F1 filter incorporates a comprehensive 5-stage filtration system to capture a wide range of airborne particles and odors:

- **Ultra-Fine Pre-Filter:** Captures larger particles such as dust, lint, fibers, and pet hair, extending the life of subsequent filters.
- **Intercept Coating:** An additional layer designed to enhance particle capture.
- **H13 True HEPA Filter:** Effectively filters 99.97% of airborne particles as small as 0.3 microns, including pollen, dust mites, pet dander, and other common allergens.
- **Customized Activated Carbon Filter:** Specifically designed for pet allergy households, this layer uses modified activated carbon to effectively absorb various unfavorable odors and fumes, including ammonia (NH₃) from pet odors, volatile organic compounds (VOCs), tobacco smoke, and cooking smells.
- **Net Filter:** Provides structural support and additional filtration.

This multi-layer design ensures thorough purification, creating a healthier indoor environment, especially beneficial for individuals with allergies, babies, the elderly, and pet owners.

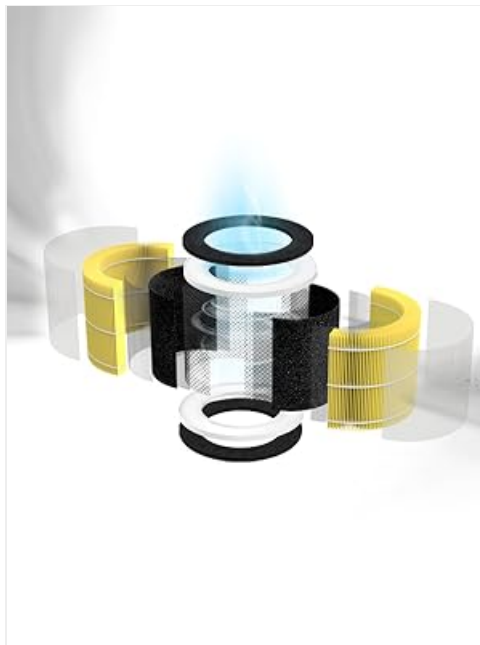


Figure 2.1: Illustration of the 5-stage deep hyperfine purification system.



Figure 2.2: Different filter versions and their targeted applications, including pet dander and odors.

3. INSTALLATION AND SETUP

Follow these steps to replace the filter in your RENPHO Air Purifier:

1. **Unplug the Air Purifier:** Always ensure the device is unplugged from the power outlet before performing any maintenance.
2. **Access the Filter Compartment:** Gently turn the air purifier upside down. Locate the base cover.
3. **Remove the Base Cover:** Turn the base cover counter-clockwise from the 'LOCK' position to the 'OPEN' position and lift it off.
4. **Remove the Old Filter:** Carefully pull out the used filter from the air purifier.
5. **Prepare the New Filter:** Remove the new DAJDAH RP-AP088-F1 filter from its plastic packaging.
6. **Insert the New Filter:** Place the new filter into the air purifier, ensuring it sits securely in the

compartment. The filter is designed for easy insertion, with no specific top or bottom orientation required.

7. **Reattach the Base Cover:** Align the base cover with the air purifier and turn it clockwise from the 'OPEN' position to the 'LOCK' position until it clicks into place.
8. **Plug In and Reset:** Plug the air purifier back into the power outlet.



Figure 3.1: Step-by-step guide for filter replacement.

Installation Video Guide

Your browser does not support the video tag.

Video 3.1: Detailed instructions on how to replace the RP-AP088-F1 filter in a RENPHO air purifier, including removal and installation steps.

Your browser does not support the video tag.

Video 3.2: A quick guide to replacing the filter for RENPHO RP-AP088 Series air purifiers.

4. OPERATING (FILTER RESET)

After replacing the filter, it is crucial to reset the filter lifetime indicator on your RENPHO Air Purifier. This ensures accurate tracking of the new filter's lifespan and proper operation of the device.

To reset the filter indicator, press and hold the "FILTER" button on the control panel for approximately 3

seconds until the indicator light turns off or resets.



5. MAINTENANCE

For optimal performance and to ensure continuous clean air, it is recommended to replace the DAJDAH RP-AP088-F1 filter every 6 months. This timeframe may vary depending on air quality, usage frequency, and environmental factors.

Regular replacement prevents the accumulation of pollutants in the filter, which can reduce the air purifier's efficiency and potentially re-release trapped particles into the air.

6. TROUBLESHOOTING

If you encounter any issues after replacing your filter, consider the following:

- **Filter Indicator Light Remains On:** Ensure you have correctly reset the filter indicator by pressing and holding the "FILTER" button for 3 seconds after installation.
- **Reduced Airflow or Odors:** Verify that the new filter's plastic packaging has been completely removed. Check that the filter is seated correctly and the base cover is securely locked. If the issue persists, the filter might be saturated prematurely due to extremely poor air quality, or it may be time for another replacement.

- **Unusual Noises:** Ensure the filter is properly installed and not obstructing any moving parts. Check that the base cover is fully secured.

If these steps do not resolve the issue, please refer to the Warranty and Support section for assistance.

7. SPECIFICATIONS

Brand	DAJDAH
Model Number	RP-AP088-F1
Material	True HEPA H13
Product Dimensions	7.6"L x 7.6"W x 6.2"Th (19.3 cm L x 19.3 cm W x 15.7 cm H)
MERV Rating	13
Compatible Devices	RENPHO Air Purifier RP-AP088B, RENPHO Air Purifier RP-AP088W
Number of Items	2 (as per product listing)
Air Filter Construction	Pleated



Figure 7.1: Filter dimensions for compatibility verification.

8. WARRANTY AND SUPPORT

Please note that this DAJDAH RP-AP088-F1 replacement filter is not an OEM (Original Equipment Manufacturer) product from RENPHO and is therefore not covered under any RENPHO manufacturer's warranty. The use of RENPHO brand names and logos is solely for demonstrating compatibility.

For any questions or concerns regarding your DAJDAH RP-AP088-F1 filter, please contact DAJDAH customer service. We are committed to providing 7x24 hour service to assist you.