



Manuals.plus /

› Kircuit /

› Kircuit USB Cable Instruction Manual for Indena G-807 Subwoofer

## Kircuit USB Cable for Indena G-807

# Kircuit USB Cable Instruction Manual

For Indena G-807 G807 Subwoofer Portable Stereo Wireless Bluetooth Powered Mini Sound Bar Soundbar Speaker Audio System

## 1. INTRODUCTION

---

This manual provides essential instructions for the proper setup, operation, and maintenance of your Kircuit USB Cable. Please read this manual thoroughly before using the product to ensure safe and efficient operation. Keep this manual for future reference.

## 2. PRODUCT OVERVIEW

---

The Kircuit USB Cable is a high-quality replacement data sync and charging cord designed for compatibility with various devices, including the Indena G-807 G807 Subwoofer Portable Stereo Wireless Bluetooth Powered Mini Sound Bar Soundbar Speaker Audio System. It facilitates data transfer between compatible devices and provides power for charging.



Image 2.1: Kircuit USB Cable. This cable is designed for reliable data synchronization and power delivery.

### 3. FEATURES AND SAFETY

---

This Kircuit USB Cable is manufactured with quality materials and tested to ensure reliable performance. It incorporates design elements focused on durability and user safety.

- **High-Quality Construction:** Made with durable materials and a thick insulation layer to protect against wear and tear.
- **Abrasion-Resistant Outer Sheathing:** Designed to prevent damage from external factors.
- **Temperature Resistance:** The cable can withstand high temperatures without melting or degrading, crucial for consistent current loads.
- **Secure Connectors:** Plugs are well-made to provide a stable connection and handle electrical loads without overheating.

## Built Safety Protections

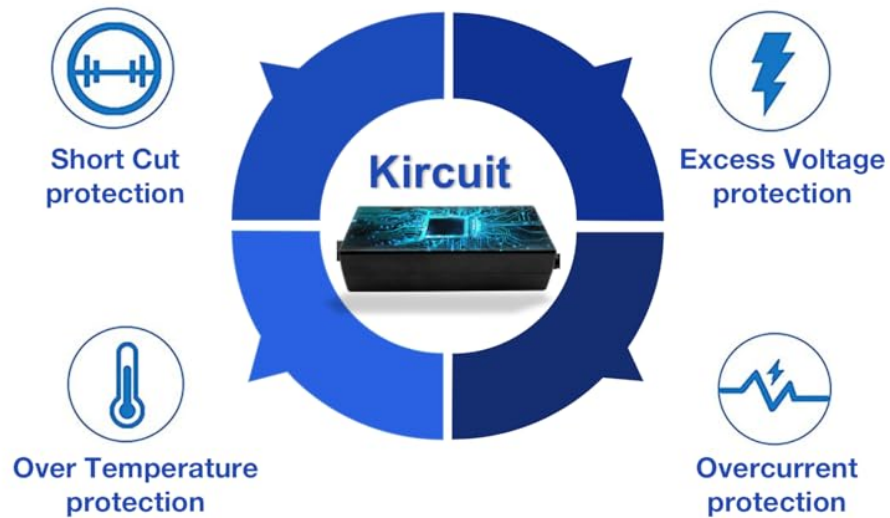


Image 3.1: Built-in Safety Protections. The cable's design considers protection against common electrical issues.

## Durable design

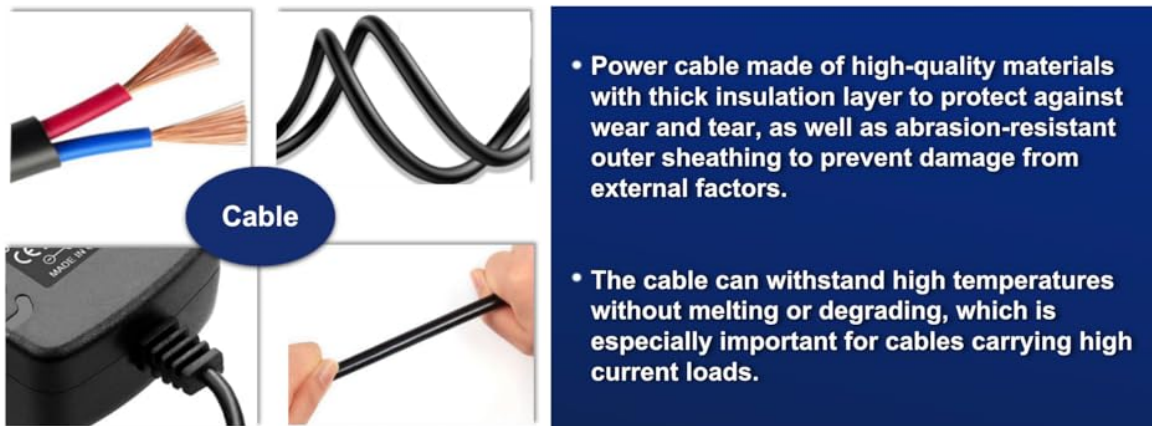


Image 3.2: Durable Cable Design. High-quality materials ensure longevity and resistance to damage.

- The plugs on the power cable also well-made and designed to provide a secure and stable connection.
- The plugs can handle high electrical loads without overheating or causing a fire hazard.

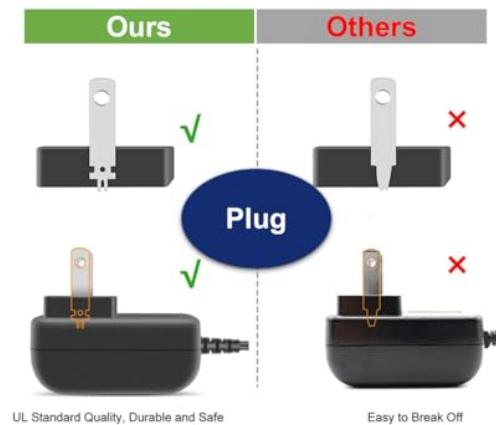


Image 3.3: Plug Quality Comparison. Kircuit plugs are designed for secure and stable connections, adhering to quality standards.

## 4. SETUP AND CONNECTION

Follow these steps to connect your Kircuit USB Cable to your devices:

1. **Identify Ports:** Locate the appropriate USB port on your Indena G-807 Subwoofer (or other compatible device) and the USB port on your computer, laptop, or power adapter.
2. **Connect to Device:** Insert the smaller connector end of the Kircuit USB Cable into the corresponding port on your Indena G-807 Subwoofer. Ensure it is fully seated.
3. **Connect to Power/Data Source:** Insert the standard USB-A connector end of the cable into a free USB port on your computer, laptop, or a compatible USB wall charger/power adapter.
4. **Verify Connection:** For charging, confirm that your device indicates it is receiving power. For data transfer, ensure your computer recognizes the connected device.

## 5. OPERATION

Once connected, the Kircuit USB Cable facilitates two primary functions:

### 5.1. Data Synchronization

- When connected to a computer, the cable allows for the transfer of data between your computer and the compatible device (e.g., updating firmware, transferring audio files if supported by the device).
- Ensure your device is in the correct mode for data transfer (refer to your device's manual for specific instructions).

### 5.2. Charging

- Connect the cable to a USB power source (e.g., computer USB port, USB wall adapter) to charge your compatible device.

- Charging times may vary depending on the power source and the device's battery capacity.

## 6. CARE AND MAINTENANCE

---

Proper care extends the life of your USB cable:

- **Storage:** Store the cable in a cool, dry place away from direct sunlight and extreme temperatures. Avoid tightly coiling or bending the cable at sharp angles.
- **Cleaning:** Use a soft, dry cloth to clean the cable and connectors. Do not use liquid cleaners or solvents.
- **Handling:** Always grasp the plug, not the cable, when connecting or disconnecting. Avoid pulling or tugging on the cable forcefully.
- **Inspection:** Periodically inspect the cable for any signs of damage, such as frayed insulation, exposed wires, or bent connectors. Discontinue use if damage is observed.

## 7. TROUBLESHOOTING

---

If you encounter issues with your Kircuit USB Cable, consider the following:

- **Device Not Charging:**
  - Ensure both ends of the cable are securely connected.
  - Try a different USB port or power adapter.
  - Verify that the power source is functional.
  - Check if the device itself has a charging issue (try its original cable if available).
- **Device Not Recognized for Data Transfer:**
  - Ensure the cable is fully connected to both the computer and the device.
  - Restart your computer and the connected device.
  - Check your device's settings to ensure it is in data transfer mode.
  - Try a different USB port on your computer.
  - Ensure necessary drivers are installed on your computer for the connected device.
- **Intermittent Connection:**
  - Inspect the cable and connectors for any visible damage.
  - Ensure ports on both devices are clean and free of debris.
  - Avoid bending or stressing the cable near the connectors during use.

## 8. SPECIFICATIONS

---

- **Brand:** Kircuit
- **Model:** USB Cable for Indena G-807 (Compatible with PA-65W devices)
- **Connector Type:** USB (Male-to-Male)
- **Connectivity Technology:** USB
- **Compatible Devices:** Personal Computer, Indena G-807 G807 Subwoofer Portable Stereo Wireless Bluetooth Powered Mini Sound Bar Soundbar Speaker Audio System, and other compatible devices.
- **Color:** Black

- **Item Shape:** Round (cable cross-section)
- **Manufacturer:** Shenzhen Waweis Technology Co., Ltd
- **ASIN:** B09BC25WW4

## 9. SUPPORT

---

For further assistance or inquiries regarding your Kircuit USB Cable, please refer to the seller's support channels or visit the Kircuit official website for contact information.