

Manuals+

[Q & A](#) | [Deep Search](#) | [Upload](#)

[manuals.plus](#) /

› [VJOYCAR](#) /

› [Wireless Car Alarm System User Manual](#)

VJOYCAR 2-Way LCD Pager Remote Control DIY Install System

Wireless Car Alarm System User Manual

Brand: VJOYCAR

Model: 2-Way LCD Pager Remote Control DIY Install System

INTRODUCTION

This manual provides comprehensive instructions for the installation, operation, and maintenance of your VJOYCAR Wireless Car Alarm System. This universal vehicle anti-theft security system features a 2-way LCD pager remote control, a siren horn, and integrated shock, vibration, window, door, and trunk open alarm capabilities. Designed for DIY installation, it offers advanced security without complex wiring.

PACKAGE CONTENTS

Verify that all components are present in your package:

- Car Alarm Siren with Motion Sensor
- Two-Way Remote Key (LCD Pager)
- One-Way Remote Key
- Car Adaptor Air Sensor
- High Frequency Antenna
- Power Cables (Red/Black) with Fuse

Package List



car alarm with motion sensor



two way remote key

one way remote key



car adaptor air sensor



high frequency antenna

Figure 1: Included components of the VJOYCAR Wireless Car Alarm System.

SETUP AND INSTALLATION

The VJOYCAR Wireless Car Alarm System is designed for quick and easy DIY installation, typically taking about 5 minutes. No cutting of original car cables is required, preserving your vehicle's circuit integrity.

Siren Installation

1. Connect the red cable of the siren to the car battery's positive (+) terminal.
2. Connect the black cable of the siren to the car battery's negative (-) terminal.
3. Connect the high frequency antenna to the designated connector on the siren.
4. Securely fix the siren in a suitable location, such as near the wiper, ensuring it is stable and protected.

Easy Installation

No installation DIY model, no damage to original car circuit
One second to connect red and black cable to car + and -



Figure 2: Simplified diagram of the siren's power connection to the car battery.

Air Pressure Sensor Setup

1. Locate the on/off button on the car adaptor air sensor and turn it on. The LED light will flash, indicating it is active.
2. Plug the car adaptor air sensor into your car's cigarette lighter port. The red light will flash, confirming it is working.
3. The air sensor can be removed and hidden anywhere in the car after it is fully charged (lasts for approximately 5 days on a full charge).

Air Sensor

Plug the car adaptor air sensor into the Cigarette Lighter
If full charged, It can be taken off and be hidden anywhere in car.
(last for 5 days once full charge)



Figure 3: The car adaptor air sensor, designed for easy plug-and-play operation.

Installation Video Guide

Your browser does not support the video tag.

Video 1: Official VJOYCART installation guide demonstrating the connection of the siren and antenna to the car battery.

OPERATING INSTRUCTIONS

Arming and Disarming the System

Use the 2-way LCD pager remote control to arm or disarm the alarm system. When armed, the system monitors for unauthorized entry or significant vibrations.

Your browser does not support the video tag.

Video 2: Demonstration of arming and disarming the alarm system using the remote control.

2-Way Pager and Long Distance Monitoring

The system features a 2-way LCD pager remote control that receives notifications from the alarm siren. The RF high-

frequency antenna ensures a communication range of up to 1000 meters (in open air conditions).



2-Ways 1000 Meters Alarm

The remote control and the alarm siren is connected by wireless, the distance is about 1000 meters (Air distance without building). 2 ways remotel control can remind you that your car vibration alarm/door or truck open alarm.



Figure 4: The 2-way pager remote control provides real-time alerts over long distances.

Sensor Functionality

The system incorporates multiple sensors to detect various threats:

- **Air Pressure Sensor:** Detects illegal opening of car doors, windows, or the trunk. The siren will alarm, and a notification will be sent to the LCD remote control.
- **Vibration/Motion Sensor:** Detects car vibration or motion. The siren will alarm, and a notification will be sent to the LCD remote control.

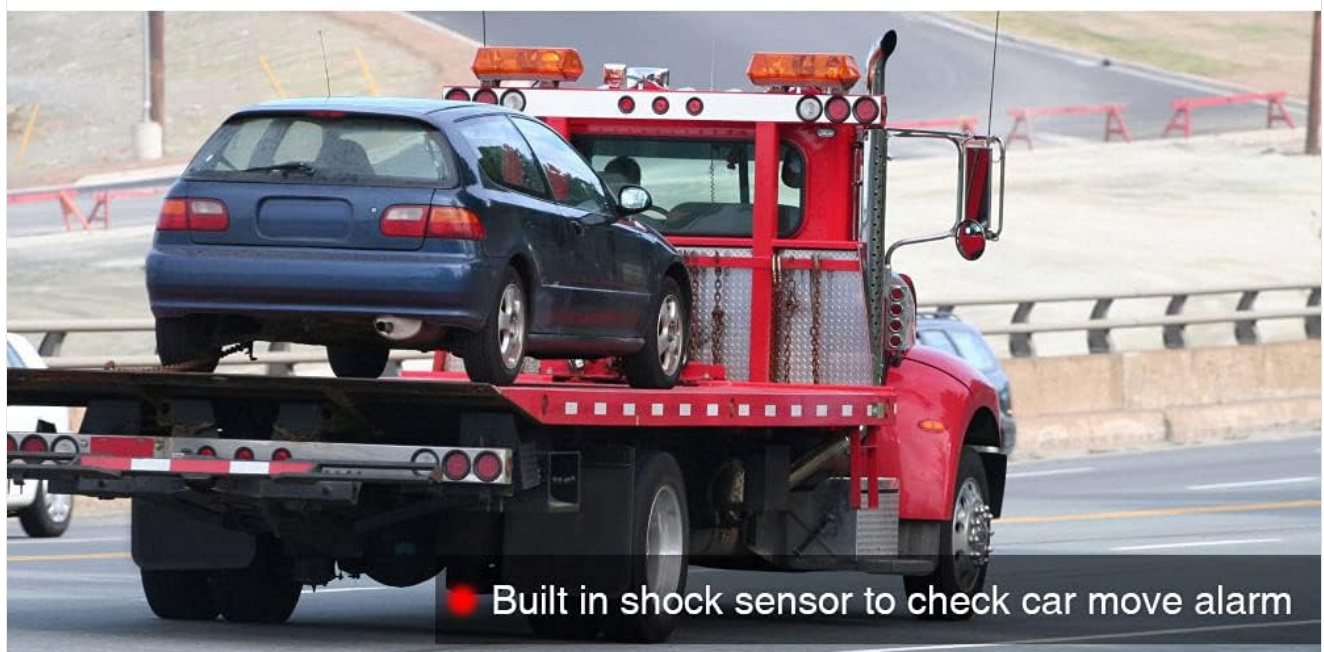


Figure 5: Visual representation of air sensor detecting door/trunk opening and shock sensor detecting car movement.

Your browser does not support the video tag.

Video 3: Demonstration of the alarm triggering when a car door is opened.

Your browser does not support the video tag.

Video 4: Demonstration of the alarm triggering when the car trunk is opened.

Find Car Function

With just one click on your remote, you can activate a function to help you locate your car in a large parking area.

Find Car

Just one click to find your car in the car park



Figure 6: The 'Find Car' feature assists in locating your vehicle.

Adjusting Vibration Sensitivity

The system offers 8 levels of vibration sensitivity, from low to high. You can adjust this setting to suit your environment and prevent false alarms.

8 Level of vibration sensitivity

There are tot 8 level of vibration sensivivity,
and 1-8 means the low to high sensitive. Even at leval,
if you think it's still too sensitive, you can turn off the vibration sensor.
When detect car door/window/trunk open illegally,
the siren will aarm and 2-way LCD remote control will notice you also.



Figure 7: Adjusting the vibration sensitivity of the alarm system.

Your browser does not support the video tag.

Video 5: Guide on how to adjust the siren's sensitivity using the remote control.

Trigger Modes

The alarm system supports four different trigger modes:

- **Mode 1 (Sound Once):** Allows vibration trigger (default setting).
- **Mode 2 (Sound Twice):** Allows low voltage trigger.
- **Mode 3 (Sound Three Times):** Allows both vibration trigger and low voltage trigger.
- **Mode 4 (Sound Four Times):** Forbids both vibration and low voltage triggers (effectively mutes the siren).

4 Kinds of Trigger Mode

Mode 1(sound once): allow vibration trigger(default)

Mode 2(sound twice): allow low voltage trigger

Mode 3(sound three times): allow vibration trigger and low voltage trigger.

Mode 4(sound four times): forbid vibration and low voltage trigger



Figure 8: Overview of the four available trigger modes for the alarm system.

MAINTENANCE

To ensure the longevity and optimal performance of your VJOYCAR Wireless Car Alarm System, follow these general maintenance guidelines:

- Keep the siren and sensors clean and free from excessive dirt or debris.
- Regularly check the connections to the car battery to ensure they are secure.
- Monitor the battery life of the air pressure sensor and recharge as needed.
- Avoid exposing the remote controls and siren to extreme temperatures or direct water immersion.
- If the system is not functioning correctly, refer to the troubleshooting section before attempting any repairs.

TROUBLESHOOTING

If you encounter issues with your VJOYCAR Wireless Car Alarm System, please consult the following common troubleshooting steps:

Problem	Possible Cause / Solution
Siren does not sound or stops working.	<p>Check Power Supply: Ensure the siren is perfectly installed and both power cables (red and black) have a secure power supply from the car battery.</p> <p>Remote Control Setting: Verify that the 2-way remote control is not set to "auto disarm" mode. In this mode, if the remote is close to the car, the siren may not sound even if the car is shaken, as it disarms automatically.</p> <p>Mute Mode: Check if the remote control is in "mute" mode (often activated by pressing a specific button, e.g., '#'). In mute mode, the siren will not sound, but the alarm will still notify the 2-way remote control.</p> <p>Activation Mode: Confirm that the vibration working mode is activated and on for both 1-way and 2-way remote controls.</p> <p>Contact Support: If the issue persists, contact VJOYCAR customer support for further assistance or a potential replacement siren.</p>
False alarms or excessive sensitivity.	<p>Adjust Sensitivity: The system has 8 levels of vibration sensitivity. Adjust it to a lower level if you are experiencing too many false alarms. Refer to the "Adjusting Vibration Sensitivity" section.</p> <p>Trigger Mode: Consider changing the trigger mode to one that is less sensitive to minor disturbances, such as Mode 4 which forbids vibration triggers.</p>
Remote control not responding.	<p>Check Battery: Ensure the remote control's battery is not depleted. Replace if necessary.</p> <p>Range: Verify you are within the 1000-meter operating range. Obstacles like buildings can reduce effective range.</p>

For any complex issues or if troubleshooting steps do not resolve the problem, please do not hesitate to contact VJOYCAR customer support. They can provide the latest user manual or specific assistance.

PRODUCT SPECIFICATIONS

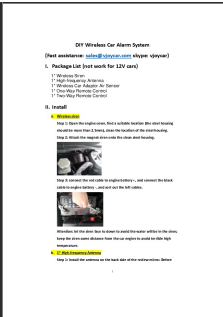
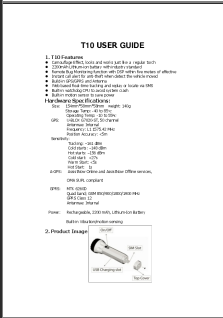
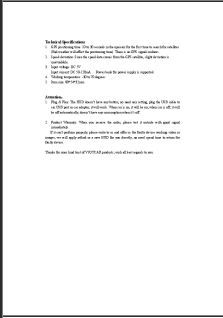
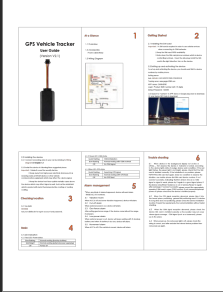
Feature	Detail
Brand	VJOYCAR
Item Weight	1.63 pounds
Package Dimensions	7.83 x 6.3 x 3.39 inches
Wireless Remote	Yes
Compatible Devices	Cars (12-15V power input)
Maximum Range	1000 Meters (RF high frequency antenna)
Noise Level	125 dB
Sensors	Built-in shock/vibration sensor, built-in air pressure sensor
Installation Type	DIY (Do-It-Yourself)


WARRANTY AND SUPPORT

For warranty information, technical support, or to obtain the latest version of this user manual, please contact VJOYCAR customer service through their official channels. Your satisfaction is important, and they are available to assist with any questions or concerns regarding your product.

You can also refer to the official [User Manual \(PDF\)](#) for additional details.

Related Documents - 2-Way LCD Pager Remote Control DIY Install System

	<p>VJOYCAR X6 Wireless Car Alarm System: Installation and User Guide</p> <p>Detailed installation and usage guide for the VJOYCAR X6 Wireless Car Alarm System. Covers package contents, step-by-step installation of siren, antenna, and air sensor, and comprehensive instructions for operating the one-way and two-way remote controls, including trigger settings and sensitivity adjustments.</p>
	<p>T10 User Guide: Features, Specifications, and Operation</p> <p>Comprehensive user guide for the T10 GPS tracking device. Learn about its features, hardware specifications, installation, SMS commands for tracking, remote listening, alerts, and power management.</p>
	<p>VJOYCAR GPS HUD Technical Specifications and User Guide</p> <p>Detailed technical specifications, usage instructions, and warranty information for the VJOYCAR GPS Head-Up Display (HUD) for cars and trucks. Learn about its features, power requirements, operating conditions, and warranty policy.</p>
	<p>GPS Vehicle Tracker User Guide - VJOYCAR</p> <p>Comprehensive user guide for the VJOYCAR GPS Vehicle Tracker (Version V2.1), covering installation, setup, operation, alarm management, and troubleshooting.</p>

<div>Head Up Display</div> <div>User Manual</div> <div><p>Product images and descriptions only for reference purposes. We please note the actual product.</p><p>Introduction</p><p>Thank you for purchasing the VJOYCAR W02 5.5-inch OBDII Head Up Display (HUD). This product is a high-tech product that can help you drive safely and comfortably. It is designed to project driving information onto the windshield, so you can keep your eyes on the road and avoid distractions. The product is easy to install and use, and it can help you avoid accidents and improve your driving performance. Please read the user manual carefully to learn how to use the product correctly. The product is not a toy and should be used responsibly. We are not responsible for any damage or loss caused by the use of the product. Please use the product safely and responsibly.</p></div>	<div>VJOYCAR W02 5.5" Head Up Display (HUD) User Manual - Installation, Settings, and Operation</div> <div>Comprehensive user manual for the VJOYCAR W02 5.5-inch OBDII Head Up Display (HUD). This guide covers installation, main features, detailed settings, common operation procedures, troubleshooting common problems, and technical specifications for safe and convenient driving.</div>
<div>GSM/GPRS/GPS Tracker</div> <div>Quick Installation Guide</div> <div></div> <div>Car/Motorcycle/Scooter GPS Tracking Device</div>	<div>GSM/GPRS/GPS Tracker Quick Installation Guide</div> <div>A quick installation guide for the GSM/GPRS/GPS Tracker, a device for car, motorcycle, and scooter tracking. Includes features, specifications, installation steps, device light descriptions, wiring connections, and SMS commands.</div>