

PATPET Wireless IP65 Dog Doorbell

User Manual for Wireless Dog Doorbell

Model: Wireless IP65 Dog Doorbell

INTRODUCTION

This user manual provides detailed instructions for the setup, operation, and maintenance of your new Wireless Dog Doorbell. This device is designed to assist in potty training your dog by providing a clear signal when they need to go outside. Please read this manual thoroughly before using the product to ensure proper function and safety.

PRODUCT FEATURES

- **Easy to Trigger:** Features a large and sensitive touch surface, suitable for dogs of any size, including puppies.
- **No Wall Damage:** Designed with a mount base that allows for battery replacement without removing the base from the wall.
- **Customizable Tones & Volume:** Offers 58 selectable tones and 4 adjustable volume levels, including a silent mode.
- **Extended Range:** Provides an operating range of up to 152 feet (approximately 46 meters) in open areas, ensuring you don't miss a signal.
- **Memory Function:** Automatically saves your last selected tone and volume settings, eliminating the need for re-configuration after power cycles.
- **IP65 Waterproof:** The touch button is rated IP65 waterproof, making it suitable for outdoor use.



This diagram illustrates the effective range of the doorbell system and highlights its key features, including 500ft range, 58 chimes, and 0-85dB volume range.

4 Selectable Modes



Light on+Music



Light Flashes+Music



Music Only



Light Flashes Only

The doorbell offers four selectable modes: Light on + Music, Light Flashes + Music, Music Only, and Light Flashes Only, allowing customization for different environments, such as silent mode for undisturbed rest.



Memory Function

Setting will not change
after restart

The memory function ensures that your preferred settings are retained even after the device is powered off or restarted.

PACKAGE CONTENTS

Please check the package contents upon unboxing:

- 1 x Wireless Dog Doorbell Receiver
- 1 x Wireless Dog Doorbell Button (Transmitter)
- Mounting Hardware (screws, anchors, adhesive tape)
- User Manual



The main components of the wireless dog doorbell system: the receiver (left) and the touch button (right).

SETUP INSTRUCTIONS

1. Installing the Button (Transmitter)

1. **Choose a Location:** Select a suitable location for the button, typically near a door where your dog can easily reach it with their paw or nose. Ensure the surface is clean and dry.
2. **Mounting with Adhesive Tape:**
 - Peel off one side of the provided 3M adhesive tape.
 - Attach it to the back of the doorbell button.
 - Peel off the other side and firmly press the button onto the desired surface for at least 30 seconds.
3. **Mounting with Screws (Optional):** For a more secure installation, use the provided screws and anchors.
 - Mark the positions for the screw holes on the wall.
 - Drill pilot holes if necessary.
 - Secure the mounting base of the button to the wall using the screws.

- Attach the button to the base.

(1) Hold the door bell and unscrew it counterclockwise.



(2) Align the buckle with the card slot and rotate clockwise to reset.



NO Damage to the wall or the door

This image demonstrates the process of opening the doorbell button for mounting or battery access, ensuring no damage to the wall.

2. Setting up the Receiver

1. **Power On:** Plug the receiver into a standard wall outlet in a central location within your home, ensuring it's within range of the button.
2. **Pairing (if necessary):** The units are usually pre-paired. If not, or if you add more buttons/receivers:
 - Press and hold the volume button on the receiver for 5 seconds until it beeps.
 - Immediately press the doorbell button. The receiver will chime, indicating successful pairing.

OPERATING INSTRUCTIONS

1. Adjusting Volume and Tone

- **Volume Adjustment:** Press the volume button on the receiver to cycle through 4 volume levels (including silent mode).
- **Tone Selection:** Press the music/chime button on the receiver to cycle through the 58 available tones.

2. Potty Training Your Dog

Consistency is key for successful potty training with the doorbell. Here's a basic guide:

1. **Introduce the Bell:** Before taking your dog outside for a potty break, guide their paw or nose to touch the doorbell button. As they touch it, say a command like "Potty outside!" or "Bell!" and immediately open the door and go outside.
2. **Reward:** Once your dog successfully eliminates outside, praise them enthusiastically and offer a treat. This positive reinforcement helps them associate ringing the bell with going outside and receiving a reward.
3. **Repeat Consistently:** Repeat this process every time you take your dog out. Over time, your dog will learn to associate touching the bell with going outside to relieve themselves.
4. **Respond Promptly:** When your dog rings the bell, respond immediately. If you delay, they may not connect the bell with the desired action.
5. **Patience:** Training takes time and patience. Some dogs learn faster than others. Do not get discouraged if it takes a few days or weeks.

Just touch lightly Wide contact



The large, sensitive touch surface allows dogs to easily activate the doorbell with a light touch of their nose or paw.

MAINTENANCE

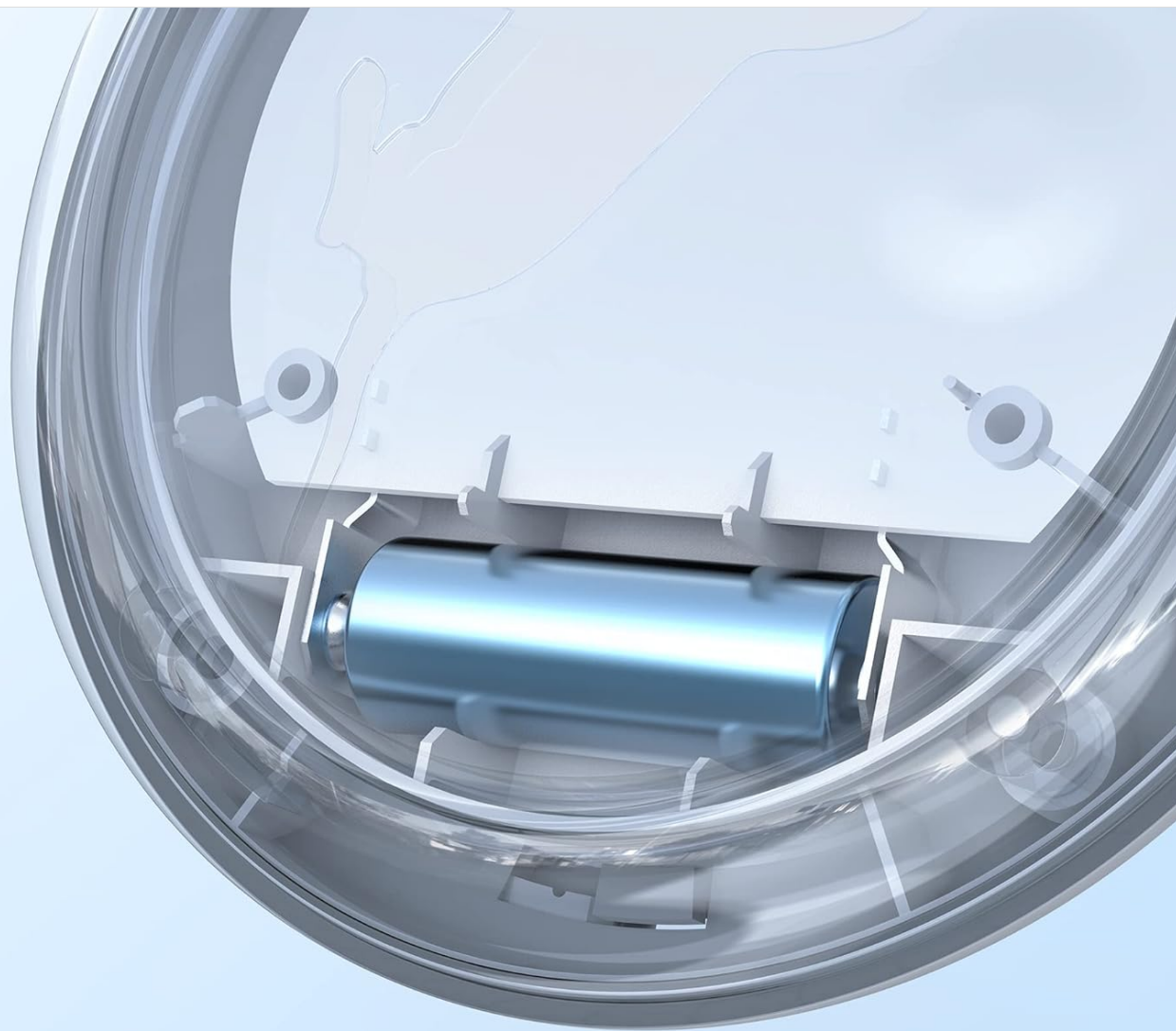
1. Cleaning

Wipe the doorbell button and receiver with a soft, damp cloth. Do not use harsh chemicals or abrasive cleaners.

2. Battery Replacement (Button)

The doorbell button is powered by a CR2032 coin cell battery (not included, or pre-installed depending on model). The battery life is typically 6-12 months. When the button stops working or the signal weakens, it's time to replace the battery.

1. Hold the doorbell button and unscrew its base counterclockwise to open.
2. Carefully remove the old battery.
3. Insert a new CR2032 battery with the positive (+) side facing up.
4. Align the buckle with the card slot and rotate clockwise to close and secure the base.



Battery Life

6 month - 12 month

The doorbell button uses a standard coin cell battery, providing 6 to 12 months of battery life.

TROUBLESHOOTING

Problem	Possible Cause	Solution
Doorbell does not ring.	Receiver unplugged or no power. Button battery is dead. Units are out of range. Units are not paired.	Ensure receiver is plugged into a working outlet. Replace the button battery. Move receiver closer to the button. Re-pair the button and receiver (refer to Setup Instructions).
Short operating range.	Obstructions (thick walls, metal objects). Interference from other devices.	Relocate receiver or button to minimize obstructions. Move the doorbell away from other electronic devices.

Problem	Possible Cause	Solution
Doorbell rings randomly.	Interference. Button is being accidentally pressed.	Relocate the receiver or button. Ensure the button is mounted securely and not being triggered by vibrations or other objects.

SPECIFICATIONS

Feature	Detail
Model	Wireless IP65 Dog Doorbell
Brand	PATPET
Pet Type	Dog
Color	White
Operating Range	Up to 152 feet (46 meters) in open area
Tones	58 selectable chimes
Volume Levels	4 levels (0-85dB)
Button Waterproof Rating	IP65
Button Battery Type	CR2032 Coin Cell (not included/pre-installed)
Button Battery Life	6-12 months (approx.)
Receiver Power	AC Plug-in
Item Weight	209 grams
Package Dimensions	10.59 x 10.39 x 7.9 cm

SAFETY INFORMATION

- Do not expose the receiver to water or high humidity. The button is IP65 rated, but the receiver is not.
- Keep batteries out of reach of children and pets. If swallowed, seek immediate medical attention.
- Do not attempt to disassemble or repair the device yourself. Contact customer support for assistance.
- Dispose of old batteries properly according to local regulations.

WARRANTY AND SUPPORT

For warranty information or technical support, please refer to the contact details provided on the product packaging or visit the official PATPET website. Keep your purchase receipt for warranty claims.

Official Website: www.patpet.com

