

## KLEIN TOOLS NCVT1P

# Instruction Manual

## KLEIN TOOLS NCVT1P NON-CONTACT VOLTAGE TESTER

Model: NCVT1P | Brand: KLEIN TOOLS

### 1. SAFETY INFORMATION

---

**WARNING: Always read and understand all safety instructions before using this product.**

This Non-Contact Voltage Tester is designed for detecting AC voltage. Always assume live circuits until verified otherwise. Follow all local and national safety codes.

**Safety Rating:** CAT IV 1000V. This rating indicates protection against high-energy transients in low-voltage installations, such as utility service entrance, outside and service drop from pole to building, and meter runs.

**Proposition 65 Warning: This product may expose you to chemicals known to the State of California to cause cancer and birth defects or other reproductive harm. For more information, go to [www.P65Warnings.ca.gov](http://www.P65Warnings.ca.gov).**

### 2. PRODUCT OVERVIEW

---

The Klein Tools NCVT1P is a non-contact voltage tester designed for quick and reliable detection of AC voltage in various electrical components. It features audible and visual indicators for voltage presence, an auto power-off function to conserve battery life, and a durable, compact design for portability.

#### Key Features:

- Non-contact detection of AC voltage in cables, cords, circuit breakers, lighting fixtures, switches, non-tamper-resistant outlets, and wires.
- Bright LED illuminates green to indicate tester is operational and flashes red with an audible alert when voltage is detected.
- Broad application with a 50 to 1000V AC power detection range.
- Auto power-off function to conserve batteries.
- Lightweight and durable compact design with a convenient clip for secure pocket storage.
- 6.6-Foot (2 m) drop protection.
- Trusted safe with a safety rating of CAT IV 1000V.



Figure 1: Klein Tools NCVT1P Non-Contact Voltage Tester.

### 3. WHAT'S IN THE BOX

---

- 1 x Klein Tools NCVT1P Non-Contact Voltage Tester
- 2 x AAA 1.5 Volt Batteries (pre-installed or included separately)
- Instruction Manual (this document)

### 4. SETUP

---

#### 4.1 Battery Installation

The NCVT1P requires two AAA 1.5 Volt batteries. These are typically included. To install or replace batteries:

1. Twist the end cap counter-clockwise to remove it.
2. Insert two AAA 1.5 Volt batteries, ensuring correct polarity (+/-).
3. Replace the end cap by twisting clockwise until secure.

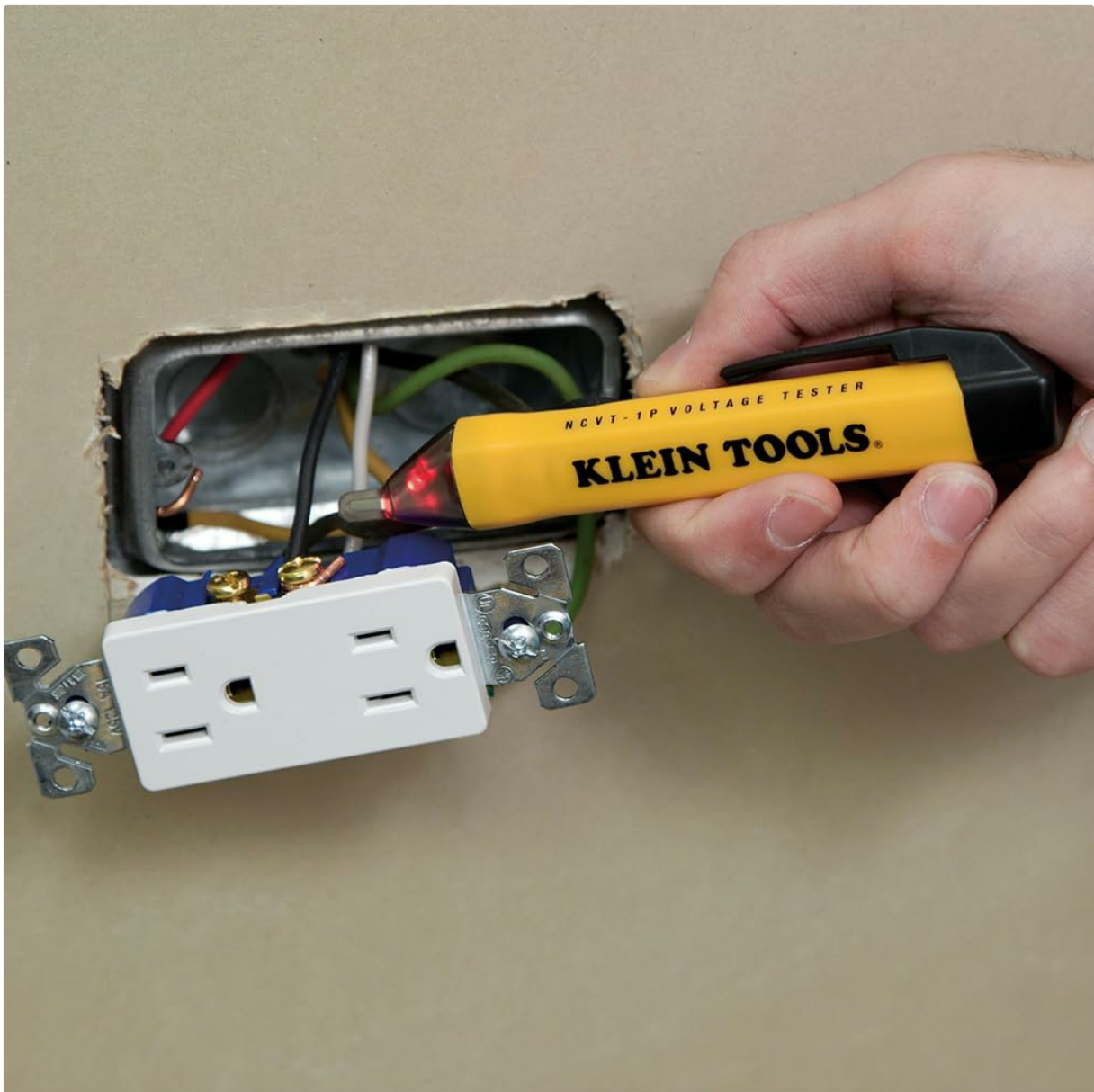


Figure 2: Battery compartment access by twisting the end cap.

## 5. OPERATING INSTRUCTIONS

---

### 5.1 Powering On/Off

Press the power button located on the side of the tester. A bright green LED will illuminate at the tip, indicating the tester is powered on and ready for use. To turn off the tester, press the power button again. The tester also features an auto power-off function to conserve battery life if left inactive.

## EASY START



### Step 1:

- Push on/off button
- Green LED indicates tester is not detecting voltage



### Step 2:

- Test a known live system
- Red LED and audible tone indicates voltage is detected



Figure 3: Green LED indicates the tester is operational.

## 5.2 Testing for AC Voltage

Before each use, always test the NCVT1P on a known live circuit to confirm proper operation.

1. Ensure the tester is powered on (green LED illuminated).
2. Place the tip of the tester near or into the electrical component you wish to test (e.g., outlet slot, insulated wire, circuit breaker).
3. If AC voltage is detected, the LED at the tip will flash red, and an audible beeping tone will sound. The frequency of the beeps and flashes may increase with higher voltage or closer proximity to the voltage source.
4. If no voltage is detected, the green LED will remain steady, and no audible tone will be emitted.



Figure 4: Testing a live outlet. Red LED and audible tone indicate voltage.

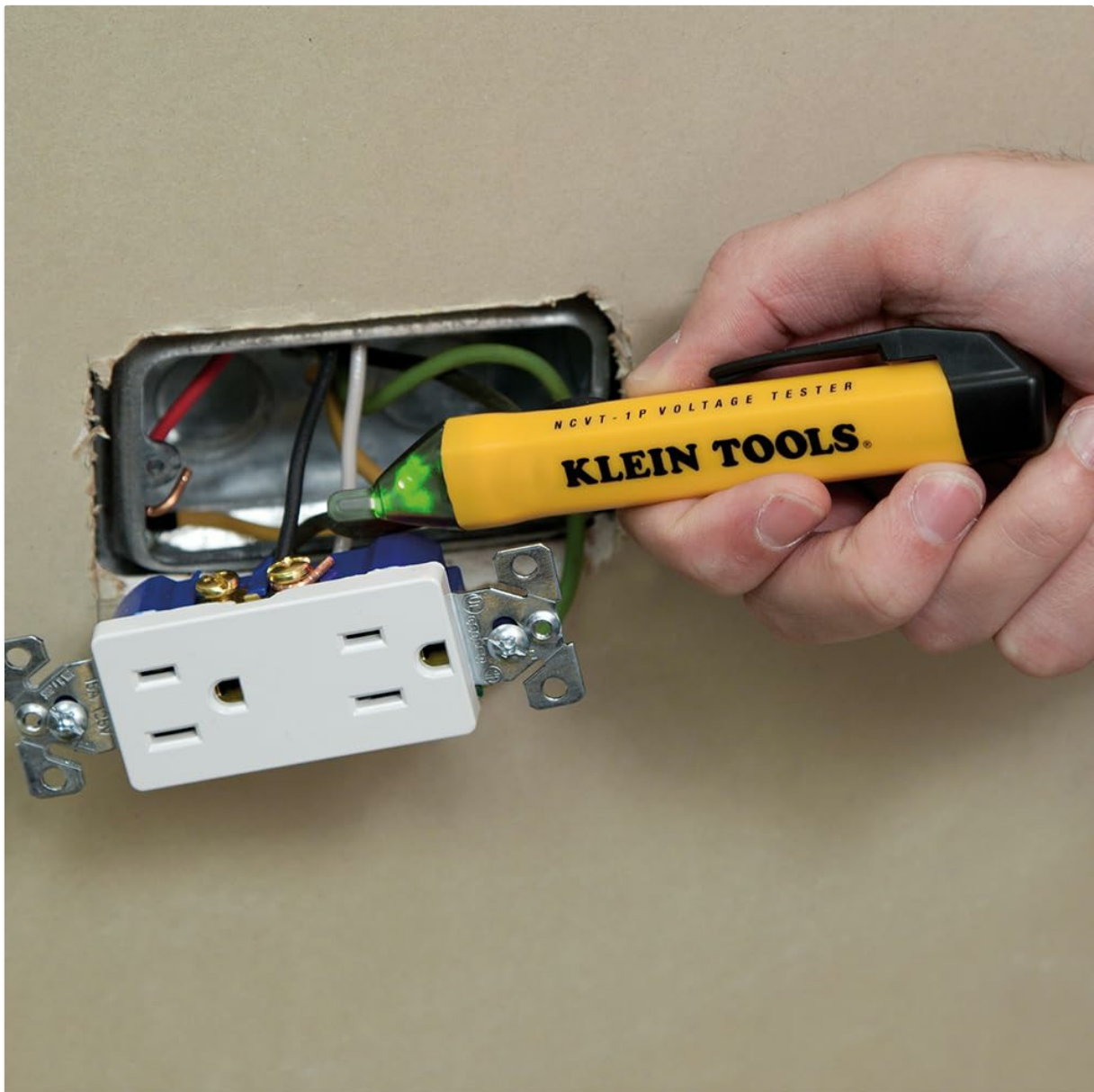


Figure 5: The tester can detect voltage through insulated wires.

## 6. MAINTENANCE

---

### 6.1 Cleaning

Wipe the tester with a dry, lint-free cloth. Do not use abrasive cleaners or solvents.

### 6.2 Battery Replacement

Refer to Section 4.1 for instructions on replacing the batteries. Replace batteries when the green LED becomes dim or the tester does not respond as expected.

## 7. TROUBLESHOOTING

---

- **Tester does not power on or green LED is dim:** Check battery installation and replace with fresh AAA batteries if necessary.
- **No voltage detected on a known live circuit:** Ensure the tester is powered on. Re-test on a different known live circuit. If the issue persists, replace batteries or contact support.
- **False positives (red LED/beeping without voltage):** Ensure the tester is not near strong electromagnetic fields or other sources of interference. Move away from such sources and re-test.

## 8. SPECIFICATIONS

---

Feature	Specification
Model Number	NCVT1P
Voltage Detection Range	50 to 1000V AC
Power Source	2 x AAA 1.5 Volt Batteries
Dimensions	5.5 x 0.72 x 1 inches
Item Weight	0.8 ounces (0.05 Pounds)
Drop Protection	6.6 Feet (2 m)
Safety Rating	CAT IV 1000V

## 9. WARRANTY AND SUPPORT

---

For warranty information or technical support, please visit the official Klein Tools website or refer to the contact information provided with your product packaging. You can also find additional resources and a downloadable PDF of the Instructions for Use at the following link: [Klein Tools NCVT1P User Guide \(PDF\)](#).