

Panasonic EH-NA9F

Panasonic Nanocare Hair Dryer EH-NA9F-RP Instruction Manual

Model: EH-NA9F-RP

1. INTRODUCTION

Thank you for purchasing the Panasonic Nanocare Hair Dryer EH-NA9F-RP. This advanced hair dryer incorporates Nanoe and Mineral technology to provide enhanced hair care, leaving your hair smooth and beautiful. Designed for convenience, it also features overseas compatibility, allowing you to maintain your hair care routine wherever you travel.



Image: The Panasonic Nanocare Hair Dryer EH-NA9F-RP in Rouge Pink.

2. SAFETY PRECAUTIONS

To ensure safe operation and prevent damage to the product or injury to yourself and others, please read all instructions carefully before use. Keep this manual for future reference.

- Do not use the appliance near water (e.g., in a bathroom or near a sink).
- Always unplug the hair dryer after use.
- Do not block the air inlet or outlet during operation.
- If the power cord is damaged, it must be replaced by the manufacturer, its service agent, or similarly qualified persons to avoid a hazard.
- Keep out of reach of children.
- Do not use if the appliance is damaged.

3. PARTS IDENTIFICATION

Familiarize yourself with the components of your hair dryer:

- **Main Unit:** The body of the hair dryer.
- **Air Outlet:** Where the air exits.
- **Air Inlet:** Where air is drawn in (located at the back).
- **Handle:** For gripping the dryer.
- **Power Switch:** Controls power and airflow settings.
- **Mode Button:** Selects different hair care modes.
- **Voltage Selector Switch:** For switching between domestic and international voltage.
- **Set Nozzle:** An attachment for concentrated airflow.
- **Power Cord:** For connecting to an electrical outlet.
- **C-2 Plug Adapter:** Included for international use.



Image: Close-up view of the Panasonic Nanocare Hair Dryer, highlighting its design.

4. SETUP

1. **Attach the Set Nozzle:** Align the set nozzle with the air outlet and push it firmly until it clicks into place.
2. **Select Voltage (for overseas use):** If using the dryer outside of Japan, locate the voltage selector switch on the handle. Use a coin or a flat-head tool to slide the switch to the appropriate voltage (AC120/240V). For domestic use in Japan, ensure it is set to AC100/200V.
3. **Connect to Power:** Plug the power cord into a suitable electrical outlet. If traveling internationally, use the provided C-2 plug adapter if necessary.

国内でも海外でも

AC100/200V時は1.1m³分
(1000W、風量:TURBO時)

AC120/240V時は1.2m³分
(1400W、風量:TURBO時)



パワフルな風量で、国内でも海外でもスピーディーに乾燥。

※ 室温30°Cの時

1台で5つのモード

温風・冷風を交互に自動発生するモードをはじめ、地肌から、毛先、肌までケアできる5つのモードを搭載

温冷リズム
モード



毛先集中ケア
モード



インテリジェント
温風モード



温風の
熱さを
低減

スカルプモード



スキンケアモード



約60°C*1

Image: This diagram illustrates the hair dryer's compatibility with both domestic (Japan) and international voltages, showing the different air volumes at AC100/200V and AC120/240V.

5. OPERATING INSTRUCTIONS

The EH-NA9F-RP offers various modes and features for optimal hair care.

Power On/Off and Airflow Settings

- Slide the power switch to turn the dryer ON or OFF.
- Select desired airflow strength (e.g., TURBO, DRY, SET).

Mode Selection

Press the mode button to cycle through the following hair care modes:

- **Hot/Cold Rhythm Mode:** Alternates between hot and cold air to help seal the hair cuticles, promoting shine and reducing frizz.
- **Hair Tip Care Mode:** Focuses on the ends of the hair to prevent dryness and split ends.
- **Intelligent Hot Air Mode:** Automatically adjusts the hot air temperature to prevent overheating and maintain a comfortable drying experience.
- **Scalp Mode:** Provides gentle, approximately 60°C warm air to dry the scalp comfortably.
- **Skin Care Mode:** Delivers Nanoe ions to the face, helping to maintain skin moisture.

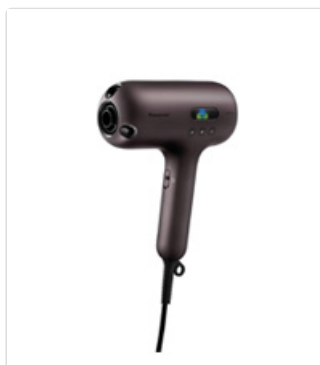



Image: This image displays the five distinct operating modes: Hot/Cold Rhythm, Hair Tip Care, Intelligent Hot Air, Scalp, and Skin Care modes.

Drying Techniques and Benefits

The Nanoe & Mineral technology helps to:


- **Provide Moisture:** Fine Nanoe particles penetrate hair, balancing moisture and suppressing frizz.
- **Reduce Friction Damage:** By tightening hair cuticles, the dryer helps reduce friction damage from brushing, leading to fewer split ends.
- **Offer UV Care:** The Nanoe and Mineral ions help protect hair from UV damage.

つややかでまとまりのある美しい髪へ




微細な「ナノイー」が髪に水分を与え、髪の水分バランスを整えることでうねり抑制。つややかでスタイリングのしやすい髪へ導きます。

イオンなし (水分が蒸発) **マイナスイオン** (髪表面に付着) **「ナノイー」** (髪に浸透)



パサツきの原因に さらさらな髪へ 髪に水分を与えしっかりとまとまる髪へ

くせの伸び率 (処理前を1.0とする)



技術	くせの伸び率
イオンなし	1.4
マイナスイオン	1.45
「ナノイー」	1.65

【モデル試験方法】毛束をブラシでとかしながら5秒間ドライヤーをあてた時の処理前後の毛束幅の変化率
●パナソニック(株)調べ ●効果には個人差があります

Image: A woman demonstrating smooth, beautiful hair, showcasing the benefits of Nanoe & Mineral technology.

ブラッシングなどによる摩擦ダメージから、髪を守る



「ナノイー」&ミネラル(※1)
搭載ドライヤーを使用した場合、キューティクルの密着性が高まり、ブラッシングなどの摩擦ダメージを抑制。使い続けることで、指通りの良い髪へ。

実際の毛先画像で比較 (毛髪の拡大写真)

「ナノイー」&ミネラル※1

傷みがなく美しい毛先



イオンなし

毛先がささくれ傷んで枝毛に



【モデル試験方法】毛束を洗浄、ドライヤーにて乾燥した後(約1分30秒)、約1,000回くして髪をとかし加速試験。イオン搭載なしドライヤーと「ナノイー」&ミネラル(※1)搭載ドライヤーを使用した場合の毛先の状態の例
●パナソニック(株)調べ ●効果には個人差があります

枝毛発生率の差



技術	枝毛発生率 (%)
イオンなし	30.7
「ナノイー」&ミネラル※1	3.0

【モデル試験方法】毛束を洗浄、ドライヤーにて乾燥した後(約1分30秒)、約1,000回くして髪をとかし加速試験。
●パナソニック(株)調べ ●効果には個人差があります

※1 ミネラルとは、亜鉛電極を含む放電ユニットから発生されるミネラルマイナスイオンです。

Image: A woman shielding her face from the sun, representing the UV care effect provided by the hair dryer. For fast drying, utilize the strong and weak airflow feature. The quick-dry nozzle creates a balanced airflow that quickly loosens hair strands, allowing for efficient drying.

強弱差のあるバランスのよい風で、毛束をほぐして素早く乾かす

01 風の強弱差

強弱差のある風でぬれた毛束をほぐし、風にあたる表面積を増やします。



Point 速乾ノズル
強弱差のある風で、素早く毛束をほぐす

髪の毛同士がほぐれると水滴が現れます

02 風圧

勢いのある風で水滴を吹き飛ばします。



ほぐし切った髪の毛には水滴が残ります

03 風温・風量

残った水膜を適した風温で効果的に蒸発させ、風を全体にムラなく届けます。



全体にムラなく風を届けます

Image: This diagram illustrates the fast drying mechanism, showing how the strong and weak airflow from the nozzle quickly separates hair strands for efficient drying.

6. MAINTENANCE

Regular cleaning ensures optimal performance and extends the life of your hair dryer.

- **Cleaning the Air Inlet:** Periodically check the air inlet at the back of the dryer for dust and lint. Use a soft brush or a dry cloth to gently remove any accumulated debris. Ensure the dryer is unplugged before cleaning.
- **Cleaning the Air Outlet:** Wipe the air outlet with a dry cloth to remove any dust.
- **General Cleaning:** Wipe the main unit with a soft, dry cloth. Do not use abrasive cleaners or solvents.
- **Storage:** Store the hair dryer in a dry place, away from direct sunlight and high temperatures.

7. TROUBLESHOOTING

If you encounter any issues with your hair dryer, refer to the following common problems and solutions:

- **No Power:**
 - Check if the power cord is securely plugged into the outlet.
 - Ensure the power switch is in the 'ON' position.
 - Verify that the electrical outlet is functioning by testing it with another appliance.
- **Weak Airflow:**
 - Check the air inlet for any blockages (dust, lint, hair). Clean as described in the Maintenance section.
 - Ensure the air outlet is not obstructed.
- **Unusual Noise or Smell:**
 - Immediately turn off and unplug the dryer.
 - Inspect for any visible damage or foreign objects.
 - If the issue persists, discontinue use and contact customer support.

If the problem is not listed or persists after attempting these solutions, please contact Panasonic customer support.

8. SPECIFICATIONS

Feature	Detail
Brand	Panasonic
Model Number	EH-NA9F-RP
Color	Rouge Pink
Power Source	Corded Electric

Feature	Detail
Wattage	1400W
Special Feature	Nano Care (Nanoe & Mineral)
Hair Type Compatibility	Damaged, Dry
Number of Speeds	2
Voltage	AC100/200V, AC120/240V (Switchable)
Recommended Use	Drying
Item Dimensions (D x W x H)	9.1 x 22.2 x 22.7 cm
Body Weight (excluding set nozzle)	Approx. 620g
Cord Length	Approx. 1.7m
Included Components	Set Nozzle, C-2 Plug Adapter

9. WARRANTY AND SUPPORT

Your Panasonic Nanocare Hair Dryer EH-NA9F-RP comes with a manufacturer's warranty. Please refer to the warranty card included in the product packaging for specific terms and conditions, including the warranty period and coverage details.

For technical support, service, or inquiries regarding your product, please contact Panasonic customer service. Contact information can typically be found on the Panasonic official website or in the product packaging.