

## AGPTEK HA0305-MXFBA

# AGPTEK HA0305-MXFBA 4-in-1 LED Moving Head Stage Light Instruction Manual

## 1. INTRODUCTION

This manual provides detailed instructions for the AGPTEK HA0305-MXFBA 4-in-1 LED Moving Head Stage Light. This device is designed to create dynamic lighting effects for various events, including parties, concerts, stages, clubs, bars, and weddings. It combines multiple lighting technologies to offer a versatile and engaging visual experience.



Figure 1: AGPTEK 4-in-1 LED Moving Head Stage Light

## 2. SAFETY INSTRUCTIONS

- Read all instructions carefully before operating the device.
- Keep this manual for future reference.
- Ensure the power supply matches the voltage requirements specified on the device.
- Do not expose the device to rain or moisture to prevent fire or electric shock.
- Avoid direct eye exposure to the light source.
- Ensure proper ventilation around the unit to prevent overheating.
- Do not attempt to repair the device yourself. Refer all servicing to qualified personnel.
- Mount the device securely to prevent accidental falls.

## 3. PRODUCT FEATURES

The AGPTEK HA0305-MXFBA offers a range of features for dynamic lighting:

- **RGBW 4-in-1 Full Color:** Equipped with red, green, blue, and blue-green LEDs, providing color jumping, gradual color change, and strobe effects.
- **Multiple Control Modes:** Supports Sound Activated, DMX 512, Master-Slave, and Automatic operation.
- **DMX 512 Compatibility:** Allows for precise control over color gradients, color jumps, and strobe effects, with adjustable speed.
- **Quick Dual Sweeper Effect:** Smooth stepper motors enable a tilt range from 60 to 150 degrees. Each side features 4 independent LED indicators, combining with RGBW LED columns for unique variations and oscillating lighting effects.
- **Professional Stage Lighting:** Eight bright RGBW LEDs allow for free switching and combination of red, green, blue, and blue-green colors, creating unexpected and vibrant visual effects.



Figure 2: RGBW Color Effects



Figure 3: Quick Dual Sweeper Effect

#### 4. PRODUCT OVERVIEW AND COMPONENTS

Familiarize yourself with the device's components and control interface.





Figure 4: Front Panel Controls (Menu, Up, Down, Enter, Digital Display, MIC)

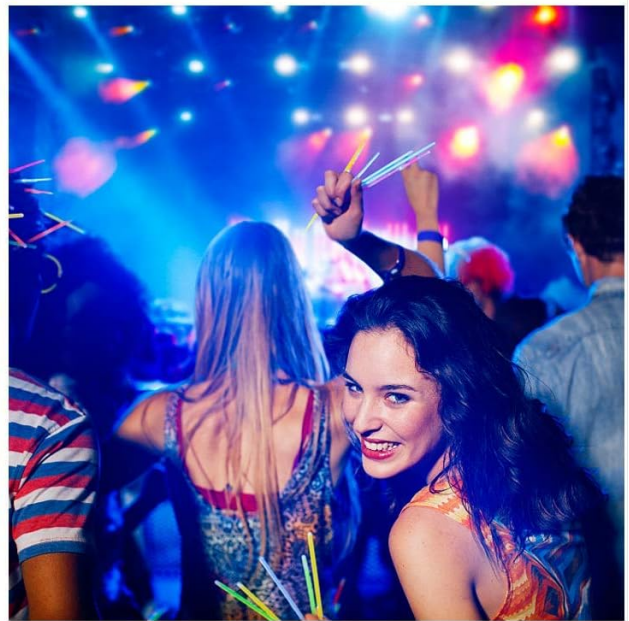


Figure 5: Rear Panel Connections (DMX In, DMX Out, Power In)





Figure 6: Product Dimensions

## 5. SETUP

1. **Unpacking:** Carefully remove the device from its packaging and inspect for any damage.
2. **Placement:** Position the light on a stable surface or mount it securely using appropriate hardware. Ensure adequate space for ventilation.
3. **Power Connection:** Connect the power cable to the 'POWER IN' port on the rear panel and then to a suitable power outlet.
4. **DMX Connection (Optional):** If using DMX control, connect a DMX cable from your DMX controller to the 'DMX IN' port. For multiple units, daisy-chain them using 'DMX OUT' to the next unit's 'DMX IN'.

## 6. OPERATING MODES

The light offers four primary operating modes:

- **Sound Activated Mode:** The light reacts to ambient sound or music, changing patterns and colors in sync with the beat. Use the built-in microphone for detection.
- **DMX 512 Control Mode:** Allows for professional control over individual light parameters using a DMX controller. Refer to the DMX section for more details.

- **Master-Slave Mode:** Connect multiple units, and one unit acts as the master, controlling all other slave units to synchronize effects.
- **Automatic Operation Mode:** The light cycles through pre-programmed patterns and color combinations automatically.

Use the 'MENU', 'UP', 'DOWN', and 'ENTER' buttons on the front panel to navigate and select operating modes.

## 7. DMX CONTROL

For advanced control, connect the light to a DMX 512 controller. This mode allows for precise manipulation of various lighting parameters, including:

- Color selection and mixing (RGBW)
- Strobe speed and intensity
- Movement (tilt angle and speed for the dual sweeper effect)
- Pattern selection (for laser and disco ball effects)

Consult your DMX controller's manual for specific channel assignments and programming instructions. The light supports smooth dimming from 0-100% and various strobe effects via DMX.



Figure 7: DMX512 Control Setup

## 8. MAINTENANCE

- **Cleaning:** Regularly clean the lenses and exterior with a soft, dry cloth to maintain optimal light output and prevent dust buildup.
- **Storage:** When not in use, store the device in a cool, dry place, away from direct sunlight and extreme temperatures.
- **Inspection:** Periodically check all cables and connections for wear or damage.

## 9. TROUBLESHOOTING



Problem	Possible Cause	Solution
No power	Power cable disconnected; no power from outlet	Check power cable connection; test outlet with another device
Light not responding to sound	Sound Activated mode not selected; microphone obstructed; sound level too low	Select Sound Activated mode; ensure microphone is clear; increase music volume
DMX control not working	Incorrect DMX cable connection; wrong DMX address; DMX controller issue	Verify DMX cable connections; set correct DMX address on light and controller; check DMX controller functionality
Lights appear dim or distorted	Lenses are dirty; unit overheating; internal fault	Clean lenses; ensure proper ventilation; contact support if problem persists

## 10. SPECIFICATIONS

Feature	Detail
Brand	AGPtek
Manufacturer Part Number	HA0305-MXFBA
Assembled Unit Height	4.72 inches
Assembled Unit Length	11 inches
Assembled Unit Width	5.9 inches
Color	Red, Green, Blue, Blue-Green
Material	Plastic, Metal, and Glass
Finish Type	Glossy
Number of Lights	8
Power Source	Corded Electric
Switch Installation Type	Rack Mount
Batteries Required	No
Bulb Type	Light Emitting Diode (LED)
Bulb Features	Color changing and mixing
Product Dimensions	27.94 x 14.99 x 11.99 cm; 1.69 kg

## 11. OFFICIAL PRODUCT VIDEOS

Explore the dynamic lighting effects and features of the AGPTEK HA0305-MXFBA with these official product videos:

Video 1: DJ Stage Lighting Effects. This video demonstrates

various colorful light beams and patterns suitable for DJ setups and stage performances.

---

Video 2: DJ Lights with Stand, Disco Ball Party Light. Showcases the light's effects, including disco ball patterns, and its use with a stand.

---

Video 3: Lighting Demonstration. A general demonstration of the light's various modes and color combinations.

---

Video 4: 150W RGBW LED Moving Head Light. Highlights the powerful RGBW LED moving head capabilities and beam effects.

---

Video 5: Laser Party Light. Focuses on the laser effects, showcasing various patterns and colors projected onto surfaces.

---

Video 6: 6-Arm Moving Head Light DWT-B91. Demonstrates the movement and light output of a similar 6-arm moving head light, providing context for the HA0305-MXFBA's capabilities.

## 12. WARRANTY AND SUPPORT

For warranty information or technical support, please refer to the contact details provided with your purchase or visit the official AGPTEK website. Keep your proof of purchase for warranty claims.