

Manuals.plus /

› ATOTO /

› ATOTO F7 XE 10.1-Inch Double Din Car Stereo User Manual - Wireless CarPlay & Android Auto Navigation System (Model F7G211XE)

## ATOTO F7G211XE

# ATOTO F7 XE 10.1-Inch Double Din Car Stereo User Manual

Model: F7G211XE | Brand: ATOTO

## 1. INTRODUCTION

This manual provides detailed instructions for the installation, operation, and maintenance of your ATOTO F7 XE 10.1-inch Double Din Car Stereo. Please read this manual thoroughly before using the product to ensure proper functionality and safety. The ATOTO F7 XE is an advanced in-dash navigation system designed to enhance your driving experience with its QLED display, wireless smartphone integration, and comprehensive audio features.



Image: ATOTO F7 XE Car Stereo showcasing its main features including Wireless CarPlay and Android Auto.

## 2. SAFETY INFORMATION

For your safety and the safety of others, observe the following precautions:

- Do not operate the device in a manner that distracts you from driving. Always prioritize road safety.
- Adjust volume to a level that allows you to hear outside traffic and emergency vehicles.
- Avoid prolonged exposure to direct sunlight or extreme temperatures, as this may damage the device.
- Ensure all wiring is correctly connected to prevent electrical hazards or damage to the vehicle's electrical system.
- Consult a professional for installation if you are unsure about any steps.

### 3. PACKAGE CONTENTS

Verify that all items are present in the package:

- Car Stereo (ATOTO F7 XE Head Unit)
- External Microphone
- Double Brackets
- Power Cable

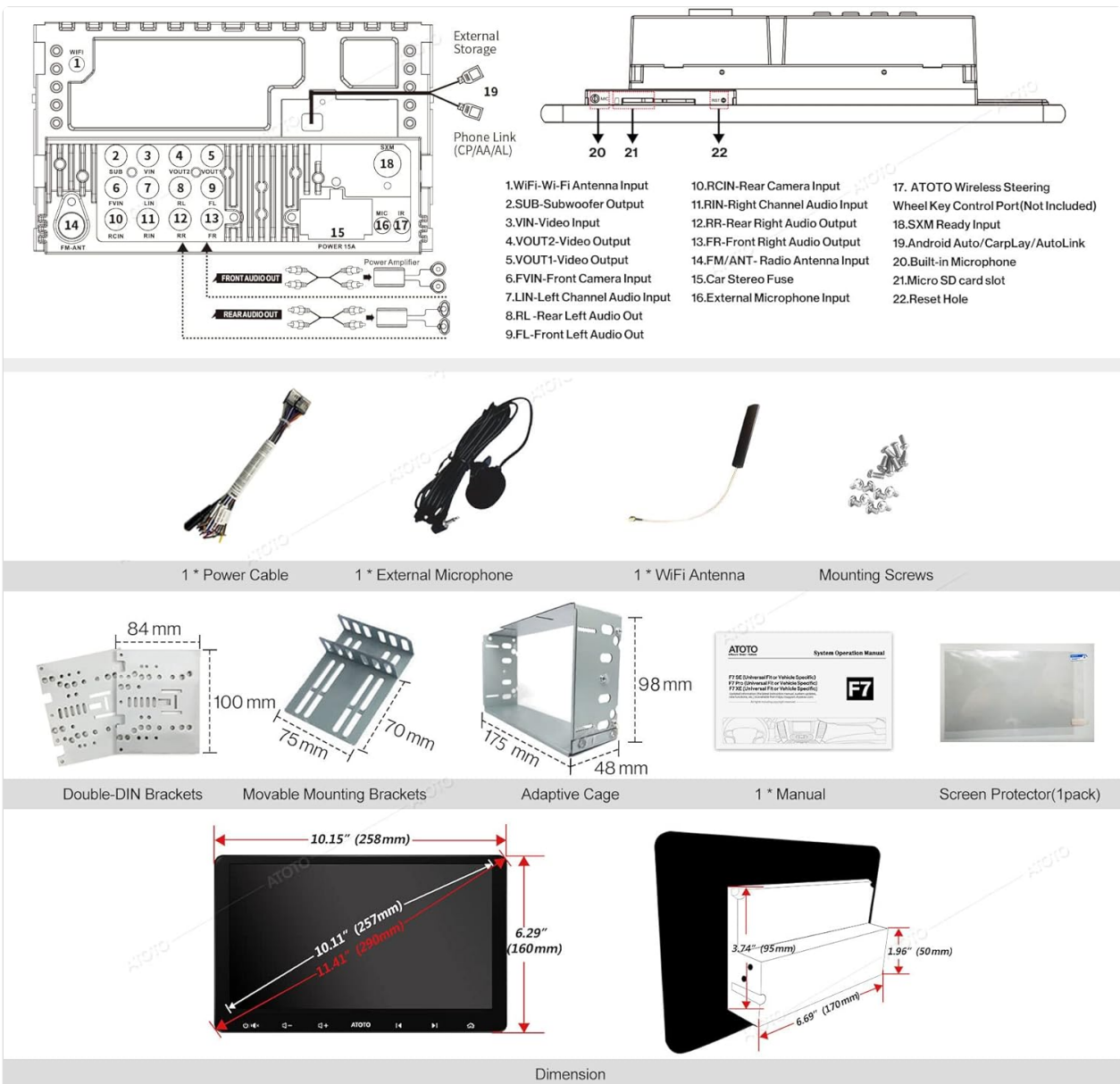


Image: Detailed view of the ATOTO F7 XE package contents, including the head unit, external microphone, double brackets, and power cable, alongside a wiring diagram and dimensions.

## 4. INSTALLATION

---

The ATOTO F7 XE is a universal double DIN head unit. Installation may require additional vehicle-specific accessories (e.g., dash frame kit, wiring harness, radio antenna adapter, CANBUS data interface) not included in the package. It is recommended to consult a professional installer if you are unfamiliar with car audio system installation.

### 4.1 Wiring Diagram

Refer to the included wiring diagram for proper connections. Ensure all connections are secure before powering on the device.

### 4.2 Mounting

Use the provided double brackets for secure installation into your vehicle's double DIN opening. On some vehicles, the 10.1-inch display may partially obstruct air vents or buttons. Verify compatibility with your vehicle's dashboard layout.

## 5. KEY FEATURES & FUNCTIONS

---

### 5.1 Display

The F7 XE features a Full HD 10.1-inch 1280x720 QLED display with a 178° full-viewing angle and 600cd/m<sup>2</sup> brightness, offering clear visibility even in bright daylight. It utilizes a 5-touch capacitive touchscreen for smooth operation.

# 10.1-Inch 1280\*720 Display Screen

Great visibility even in broad daylight

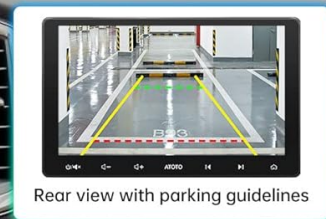


Video Output

178° Viewing Angle

## HD Rear-View Camera Input With Live Rear-View (LRV)

LRV: check traffic behind at all times



Rear view with parking guidelines

Image: The ATOTO F7 XE's 10.1-inch 1280x720 QLED display, highlighting its wide viewing angle, video output capabilities, and HD Rear-View Camera input with Live Rear-View (LRV) functionality.

## 5.2 Wireless CarPlay & Android Auto

Enjoy seamless integration with your smartphone. The F7 XE supports both wireless and wired CarPlay (for iPhone 5 or later with iOS 7.1+) and Android Auto (for phones running Android 6.0 or higher). This allows access to navigation, music, messages, and calls directly from the car stereo display. The unit also supports quick charging (max. 1.5 A) for your phone when connected via wired CarPlay/Android Auto.

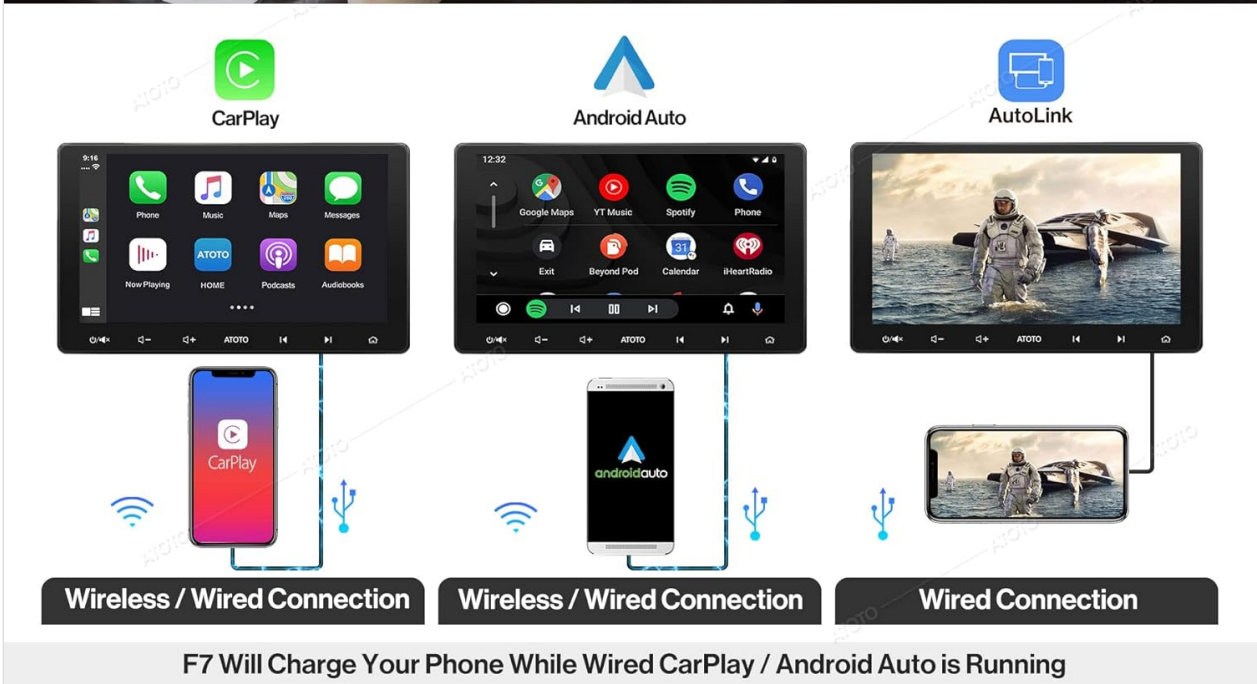


Image: Visual representation of wireless and wired connections for CarPlay and Android Auto, along with MirrorLink via AutoLink, demonstrating phone charging while connected.

### 5.3 MirrorLink (AutoLink)

For applications not supported by CarPlay or Android Auto, MirrorLink (via the AutoLink app) allows you to display your phone's screen on the F7 XE. Note that certain video streaming services may not support MirrorLink.

### 5.4 Audio Features

The F7 XE includes a built-in pre-amplifier with a maximum output of 4\*49W and RMS 4\*29W. It features a 10-band EQ with 7 presets, allowing for sound customization. Separate Subwoofer Out (0.8v) is also available.

### 5.5 Connectivity

The unit supports Bluetooth 5.0 for hands-free calls and music streaming. It includes two USB interfaces (one for phone connection, one for external storage up to 2TB SSD) and one Micro SD slot (up to 512GB) for media playback. Both SD and SSD must be in FAT32 or NTFS format.

### 5.6 Camera Inputs

The F7 XE supports 720P HD rearview camera input. The Live Rear-View (LRV) feature, when used with the

ATOTO AC-HD02LR rear-view camera (sold separately), provides a real-time rear view even when moving forward.

## 5.7 Steering Wheel Control

The F7 XE supports OEM steering wheel control functions. It is also compatible with the ATOTO AC-44F5 wireless IR remote (sold separately) for convenient control.



Image: Illustration of how to retain OEM steering wheel control functions and the optional ATOTO wireless steering wheel control (AC-44F5) with its various buttons and their corresponding actions.

## 5.8 SiriusXM Compatibility

The F7G211XE is compatible with SiriusXM. A Connect Vehicle Tuner and subscription are required (sold separately).

# 6. OPERATING INSTRUCTIONS

## 6.1 Basic Operation

The touchscreen interface allows for intuitive control. Use the physical buttons on the unit for quick access to

essential functions like volume, power, and mode selection.

## 6.2 CarPlay / Android Auto Usage

To use wireless CarPlay/Android Auto, ensure Bluetooth and Wi-Fi are enabled on your phone and the F7 XE. For wired connection, use the original USB cable that came with your phone and connect it to the 'Phone Link' USB port. Once connected, your phone's compatible apps will appear on the F7 XE display.

## 6.3 MirrorLink Usage

Install the 'AutoLink' app on your F7 XE. Connect your smartphone via USB to enable screen mirroring. Follow the on-screen prompts to establish the connection.

## 6.4 Audio Settings

Access the audio settings menu to adjust the 10-band equalizer, select from 7 preset sound profiles, and configure subwoofer output levels.

## 6.5 Bluetooth Pairing

Navigate to the Bluetooth settings on the F7 XE. Enable Bluetooth on your smartphone and search for available devices. Select 'ATOTO F7 XE' from the list and confirm the pairing code. Once paired, you can make hands-free calls and stream audio.

## 6.6 Camera Display

When a compatible rearview camera is connected, the display will automatically switch to the rear view when the vehicle is in reverse. The Live Rear-View (LRV) function can be activated through the camera app on the head unit.

# 7. MAINTENANCE

---

Regular maintenance ensures optimal performance and longevity of your ATOTO F7 XE.

- Keep the screen clean using a soft, lint-free cloth. Avoid abrasive cleaners.
- Ensure all cables are securely connected and free from damage.
- Perform system updates regularly to benefit from new features and performance improvements.

## 7.1 System Updates (OTA)

The F7 XE supports Over-The-Air (OTA) updates. Connect the unit to a Wi-Fi hotspot or use USB tethering to check for and install the latest firmware versions. Regular updates improve system stability and add new functionalities.

# 8. TROUBLESHOOTING

---

If you encounter issues with your ATOTO F7 XE, try the following basic troubleshooting steps:

- **No Power:** Check all power connections and the vehicle's fuse box.
- **No Sound:** Verify speaker connections, volume levels, and audio settings (EQ, balance).
- **CarPlay/Android Auto Not Connecting:** Ensure your phone's software is up to date. Try using a different, original USB cable. Restart both the phone and the head unit.
- **Touchscreen Unresponsive:** Perform a system reset using the RST button (if available) or power cycle the unit.

- **Poor Radio Reception:** Check the antenna connection and ensure it is properly grounded.

For more complex issues, refer to the ATOTO support website or contact customer service.

## 9. SPECIFICATIONS

Feature	Specification
Model	F7G211XE
Display Size	10.1 Inches
Display Resolution	1280 x 720 (QLED)
Operating System	Linux 4.9.217
CarPlay/Android Auto	Wireless & Wired
Bluetooth Version	5.0
Amplifier Output	Max. 4*49W, RMS 4*29W
Equalizer	10-Band EQ with 7 Presets
USB/SD Storage	Up to 2TB (USB), Up to 512GB (Micro SD)
Rear-view Camera Input	720P HD (AC-HD02LR required for LRV)
Product Dimensions	11.4 x 4.3 x 9.6 inches
Item Weight	4.16 pounds

## 10. WARRANTY AND SUPPORT

ATOTO provides professional customer support to assist with any questions regarding installation, operation, or other aspects of your ATOTO F7 XE product. For support, please visit the official ATOTO website or contact their customer service team directly.