

ZACO W450

ZACO W450 Robot Floor Cleaner User Manual

Model: W450

1. INTRODUCTION

The ZACO W450 is an intelligent robot floor cleaner designed exclusively for hard floors. It features distinct clean and dirty water tanks, ensuring that clean water is always used for mopping and dirty water is efficiently separated, preventing streaks and residue. Equipped with a powerful 2900 mAh Li-Ion battery, the W450 offers extended cleaning sessions of up to 80 minutes, covering areas up to 60 m² on various hard floor types.

Its precise 360° PanoView camera navigation with gyroscope ensures systematic and accurate cleaning paths, effectively removing dust, pet hair, and even stubborn dirt. Fall protection and obstacle sensors safeguard furniture and prevent the robot from entering carpeted areas. The W450 utilizes a 4-stage hybrid cleaning system for thorough results.

Control is convenient via the remote control, the ZACOHHome app, or smart home systems like Alexa and Google Home. The app allows for customization of water flow, movement speed, and roller speed to suit different floor types (e.g., parquet or tiles). Cleaning progress can be monitored in real-time and reviewed in the cleaning history.



Figure 1.1: The ZACO W450 Robot Floor Cleaner shown with its accompanying smartphone application interface, demonstrating its smart capabilities.

2. PACKAGE CONTENTS

Please check the package contents upon unboxing to ensure all items are present and in good condition:

- ZACO W450 Robot Floor Cleaner
- Charging Station
- Adapter Cable
- Remote Control
- Cleaning Tool
- 1x Additional Mop Roller

3. PRODUCT FEATURES

- **4-Stage Hybrid Cleaning System:** The W450 first humidifies the floor with clean water, then cleans with a

microfiber roller, vacuums dirty water into a separate tank, and finally extracts remaining water for faster drying.

Hybrides 4-Stufen-Reinigungssystem



Figure 3.1: Visual representation of the ZACO W450's 4-stage cleaning process: 1. Water spray, 2. Microfiber roller cleaning, 3. Dirty water suction, 4. Simultaneous drying.

- **Separate Water Tanks:** Features an 850 ml clean water tank and a 900 ml dirty water tank, ensuring hygienic cleaning without cross-contamination and preventing streaks.

Separate WASSERTANKS

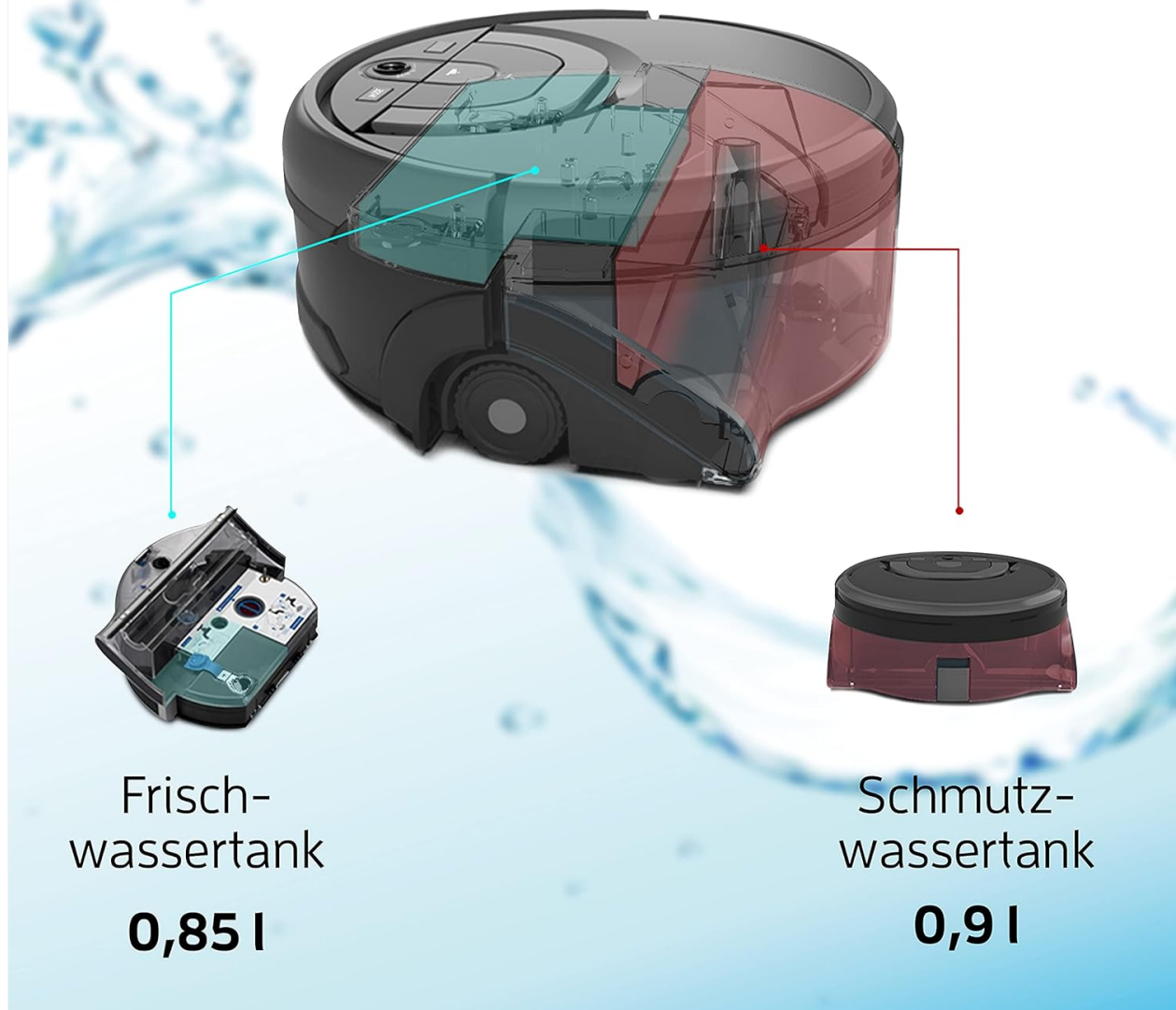


Figure 3.2: Illustration of the ZACO W450's dual water tank system, highlighting the clean water tank (0.85L) and dirty water tank (0.9L) for efficient separation.

- **High Endurance:** Up to 80 minutes of runtime, covering up to 60 m² on a single charge, allowing for efficient cleaning of multiple rooms.
- **Smart Navigation:** Utilizes 360° PanoView camera navigation with gyroscope for precise, systematic cleaning paths and smart mapping.

360° KAMERA-NAVIGATION



Figure 3.3: Depiction of the robot's 360-degree camera navigation system, which maps the cleaning area for systematic coverage.

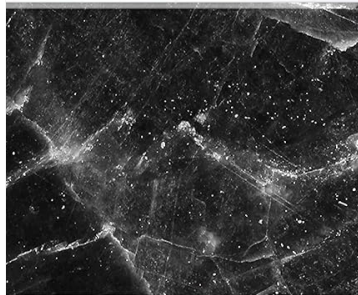
- **App Control & Smart Home Compatibility:** Control the robot via the ZACOHme app, remote control, or voice commands through Amazon Alexa and Google Home. The app allows adjustment of water flow, movement speed, and roller speed.

Effiziente Reinigung durch App-Einstellungen



Wasserausstoß

HOLZ



Wasserausstoß

MARMOR



Wasserausstoß

BETON

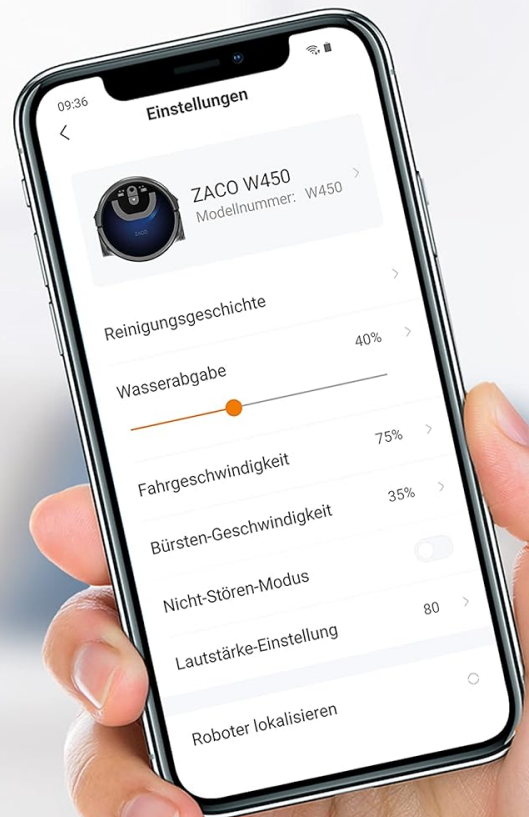


Figure 3.4: The ZACOHme app interface displaying adjustable settings for water output based on floor type (wood, marble, concrete), optimizing cleaning efficiency.

- **Safety Features:** Equipped with anti-fall and anti-collision sensors to protect furniture and prevent falls down stairs.
- **Low Noise Level:** Operates at a quiet 65 dB.

4. SETUP GUIDE

4.1 Unpacking and Placement

1. Carefully remove the ZACO W450 and all accessories from the packaging.
2. Choose a suitable location for the charging station. Ensure it is placed against a wall, on a hard, level surface, with at least 1 meter (3 feet) of clear space on both sides and 2 meters (6 feet) in front. Avoid areas with direct sunlight or strong light sources that might interfere with navigation.
3. Connect the adapter cable to the charging station and plug it into a power outlet. Ensure the power indicator on the charging station lights up.

4.2 Initial Charging

Before first use, fully charge the robot. Place the ZACO W450 onto the charging station, ensuring the charging contacts align. The robot will indicate its charging status. A full charge typically takes approximately 4-5 hours.

4.3 Filling Water Tanks

The ZACO W450 uses separate tanks for clean and dirty water. Always fill the clean water tank before starting a cleaning cycle.

1. Press the release button to detach the water tank module from the robot.
2. Locate the clean water tank (usually indicated by a blue or clear cap). Open the cap and fill with clean tap water. You may add a small amount of non-foaming, robot-safe floor cleaning solution if desired. Do not exceed the MAX fill line.
3. Close the clean water tank cap securely.
4. Reinsert the water tank module firmly into the robot until it clicks into place.



Figure 4.1: A user filling the clean water tank of the ZACO W450, demonstrating the ease of access for maintenance.

4.4 Connecting to the ZACOHme App

1. Download the "ZACOHme" app from your smartphone's app store (available on iOS and Android).
2. Open the app and create an account or log in.
3. Follow the in-app instructions to add your ZACO W450. This typically involves putting the robot into pairing mode (refer to the robot's quick start guide for specific button presses) and connecting it to your home Wi-Fi network.
4. Once connected, you can access advanced features, cleaning history, and customize settings via the app.

5. OPERATING INSTRUCTIONS

5.1 Starting a Cleaning Cycle

- **Using the Robot Button:** Press the "Clean" button on top of the robot once to start a cleaning cycle. Press again to pause.
- **Using the Remote Control:** Use the "Start/Pause" button on the remote control to begin or pause cleaning.
- **Using the ZACOHme App:** Open the app, select your W450, and tap the "Start Cleaning" button. You can also schedule cleaning times and select specific cleaning modes.
- **Voice Control (Alexa/Google Home):** Once integrated, use voice commands such as "Alexa, tell ZACO to start cleaning" or "Hey Google, ask ZACO to clean the floor."



Figure 5.1: Demonstrating the multiple control options for the ZACO W450, including a physical remote control and the ZACOHHome smartphone application.

5.2 Cleaning Modes

The ZACO W450 offers various cleaning modes to suit different needs:

- **Auto Mode:** The robot intelligently navigates and cleans the entire accessible area.
- **Spot Mode:** For concentrated cleaning of a specific dirty area. The robot will clean in a spiral pattern.
- **Edge Mode:** The robot cleans along walls and furniture edges.
- **Room-by-Room Navigation:** The robot maps out rooms and cleans them systematically.

You can select these modes via the remote control or the ZACOHHome app.

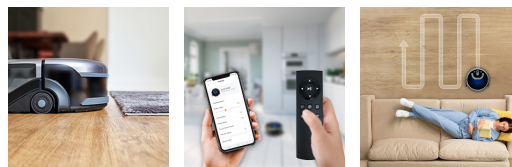


Figure 5.2: Icons representing various cleaning modes: Auto, Spot, and Edge cleaning.

5.3 Pausing and Returning to Charging Station

To pause cleaning, press the "Clean" button on the robot or the "Start/Pause" button on the remote/app. To send the robot back to its charging station, press the "Home" button on the remote control or select the "Recharge" option in the app.

6. MAINTENANCE

Regular maintenance ensures optimal performance and extends the lifespan of your ZACO W450.

6.1 Emptying and Cleaning Dirty Water Tank

The dirty water tank should be emptied after each cleaning cycle.

1. Press the release button to detach the water tank module from the robot.
2. Locate the dirty water tank (usually indicated by a red or opaque cap). Open the cap and pour out the dirty water.
3. Rinse the dirty water tank thoroughly with clean water to remove any residue.
4. Allow the tank to air dry completely before reinserting it into the robot.

6.2 Cleaning the Microfiber Roller

The microfiber roller should be cleaned regularly, especially if you notice reduced cleaning performance.

1. Remove the water tank module.

- 2. Carefully remove the microfiber roller from its compartment.
- 3. Rinse the roller under running water until it is clean. Use the provided cleaning tool to remove any tangled hair or debris.
- 4. Allow the roller to air dry completely before reattaching it to the robot.

6.3 Cleaning Sensors and Charging Contacts

Wipe the robot's sensors and charging contacts with a clean, dry cloth periodically to ensure proper function.

7. TROUBLESHOOTING

Problem	Possible Cause	Solution
Robot does not start or respond.	Low battery; Power switch off; Robot stuck.	Charge the robot fully; Ensure power switch is ON; Clear any obstructions.
Poor cleaning performance / Streaks.	Dirty water tank full; Clean water tank empty; Microfiber roller dirty; Incorrect water flow setting.	Empty and clean dirty water tank; Fill clean water tank; Clean microfiber roller; Adjust water flow in app.
Robot cannot find charging station.	Charging station obstructed or unplugged; Robot too far from station.	Ensure charging station is clear and plugged in; Manually place robot closer to station.
App connection issues.	Incorrect Wi-Fi password; Robot not in pairing mode; Router issues.	Verify Wi-Fi password; Re-enter pairing mode; Restart router and robot.
Robot avoids certain areas or falls.	Sensors are dirty; Obstacles present; Carpeted area detected.	Clean all sensors; Remove obstacles; The robot is designed to avoid carpets.

8. SPECIFICATIONS

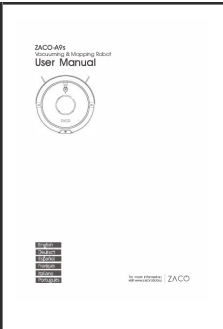
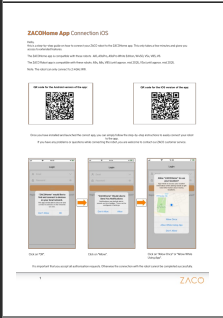
Brand	ZACO
Model Number	W450
Color	Midnight Blue
Dimensions (L x W x H)	29.2 x 29.2 x 11.5 cm (11.5 x 11.5 x 4.5 inches)
Item Weight	3.4 Kilograms (7.5 lbs)
Power	29 Watts
Voltage	14 Volts
Noise Level	65 dB





Battery Life (Autonomy)	Up to 90 minutes (1 hour 30 minutes)
Clean Water Tank Capacity	850 ml
Dirty Water Tank Capacity	900 ml
Surface Recommendation	Hard Floor
Controller Type	App Control, Remote Control, Voice Control (Alexa, Google Home)
Special Features	Motorized brush roller, Anti-fall, Edge cleaning, Multi-layer air filtration, Wet/dry, Wireless, Room-by-room navigation, Programmable, Smart mapping, Anti-collision, Obstacle avoidance, Logical navigation, Washable filter, Bagless

9. WARRANTY AND SUPPORT

The ZACO W450 comes with a manufacturer's warranty. Please refer to your purchase documentation for specific warranty terms and conditions. Spare parts availability is stated as 2 years from the date of purchase. For technical support, troubleshooting assistance, or to inquire about spare parts, please contact ZACO customer service through their official website or the contact information provided in your product packaging. You can find more information and support resources on the official ZACO website www.zacorobot.com

Related Documents - W450

	<p>ZACO-A9s Robot Vacuum & Mop User Manual</p> <p>Learn how to set up, operate, and maintain your ZACO-A9s robot vacuum and mopping cleaner with this comprehensive user manual. Includes safety instructions, product components, troubleshooting, and more.</p>
	<p>ZACOHme App Connection Guide for iOS Robots</p> <p>Step-by-step guide to connect your ZACO robot vacuum cleaner to the ZACOHme app using an iOS device. Learn how to set up your account, connect to Wi-Fi, and pair your robot for smart cleaning.</p>

<p>ZACO</p> <p>User Manual Robotic vacuum cleaner Model A4s</p>  <p><small>www.zaco.dk</small></p>	<p>ZACO A4s Robotic Vacuum Cleaner User Manual</p> <p>ZACO A4s Robotic Vacuum Cleaner User Manual: Get detailed instructions on setup, operation, maintenance, and troubleshooting for your ZACO A4s automated cleaning device.</p>
<p>ZACO V80 Robotic vacuum cleaner User Manual</p>  <p><small>www.zaco.dk</small></p>	<p>ZACO V80 Robotic Vacuum Cleaner User Manual</p> <p>Comprehensive user manual for the ZACO V80 robotic vacuum cleaner, detailing setup, operation, maintenance, and troubleshooting. Learn how to get the best performance from your robot.</p>
<p>ZACO-V5s Pro Robotic vacuum cleaner User Manual</p>  <p><small>www.zaco.dk</small></p>	<p>ZACO-V5s Pro Robotstøvsuger Brugervejledning: Din Guide til Intelligent Rengøring</p> <p>Opdag den intelligente rengøring med ZACO-V5s Pro robotstøvsugeren. Denne brugervejledning giver detaljerede instruktioner om opsætning, brug, vedligeholdelse og fejlfinding for optimal ydeevne.</p>
<p>ZACO</p> <p>User Manual Robotic vacuum cleaner Model V5x</p>  <p><small>www.zaco.dk</small></p>	<p>ZACO V5x Robotic Vacuum Cleaner User Manual</p> <p>Comprehensive user manual for the ZACO V5x robotic vacuum cleaner, covering setup, operation, maintenance, troubleshooting, and product specifications.</p>