



Manuals.plus /

› Rserteng /

› Rserteng IPC-5200C Plus 8K IP Camera Tester with Cable Tracer User Manual

## Rserteng IPC-5200C Plus

# Rserteng IPC-5200C Plus 8K IP Camera Tester with Cable Tracer User Manual

Model: IPC-5200C Plus

## 1. INTRODUCTION

The Rserteng IPC-5200C Plus is a versatile 8K IP Camera Tester designed for professional CCTV installation and maintenance. This device integrates multiple testing functions, including support for various camera types (IP, AHD, CVI, TVI, SDI, CVBS), network cable testing, PoE power output, and video display capabilities. Its 5.4-inch IPS touch screen and Android operating system provide an intuitive interface for efficient field work.

## 2. KEY FEATURES

- **Max 8K 32MP IP Camera Testing:** Supports H.265/H.264 IP cameras up to 8K 32MP, 12MP, and 4K resolutions. Includes powerful network tools for parameter detection and setup.
- **Coaxial CCTV Camera Testing:** Supports TVI / AHD / CVI / SDI cameras up to 8MP (3840x2160P), with UTC PTZ control and OSD menu access. Features "Auto HD" app for automatic camera type recognition. Also supports CVBS analog cameras.
- **Professional Testing Tools:** Built-in specialized tools for Hikvision (HIK) and Dahua (DH) cameras, enabling batch settings. Compatible with most existing cameras via Ovif and other brand-specific tools.
- **Multi-function Tester:** Equipped with a 5.4-inch 1920x1080P touch screen for genuine resolution display. Includes a media player, built-in WiFi with hotspot creation, VGA & HD Input, LED lamp, calculators, snapshot, video record & playback. Runs on Android, allowing for additional app installations.
- **Power over Ethernet (PoE) Support:** Supports PoE IEEE802.3af/at 48V with a maximum power output of 25.5W.
- **Cable Testing:** Features UTP cable test, POE power output, and RJ45 TDR cable test. Includes a cable tracer.
- **Long Battery Life:** Powered by a 7.4V/3350mAh lithium-ion battery, providing up to 6 hours of operation after 3-4 hours of charging.

## 3. PACKAGE CONTENTS

The Rsteng IPC-5200C Plus package includes the following items:

- CCTV Tester (IPC-5200C Plus) x 1
- Packing Box x 1
- Cable Tracer (WT255) x 1
- Power Adapter (US 12V/1A charger) x 1
- Audio Test Cable x 1
- Power Output Cable x 1
- Wrist Strap x 1
- BNC Video Cable x 1
- BNC to Alligator Clip Cable x 1
- RJ45 to BNC Port x 1
- RS485 Cable x 1

## Package included



Image: All components included in the Rsteng IPC-5200C Plus package, neatly arranged.



Image: Detailed view of the IPC-5200C Plus package listing, showing the main unit and accessories.

---

## **4. SETUP**

### **4.1 Charging the Device**

Before initial use, fully charge the IPC-5200C Plus. Connect the provided power adapter to the DC12V/3A power input port on the tester and plug it into a power outlet. The device typically takes 3-4 hours to fully charge, providing up to 6 hours of operation.

### **4.2 Powering On/Off**

Press and hold the power button located on the top left side of the device to power on or power off the tester.

### **4.3 Interface Overview**

Familiarize yourself with the various ports and controls on the device:

# Application

## 8K IPC-5200C Plus

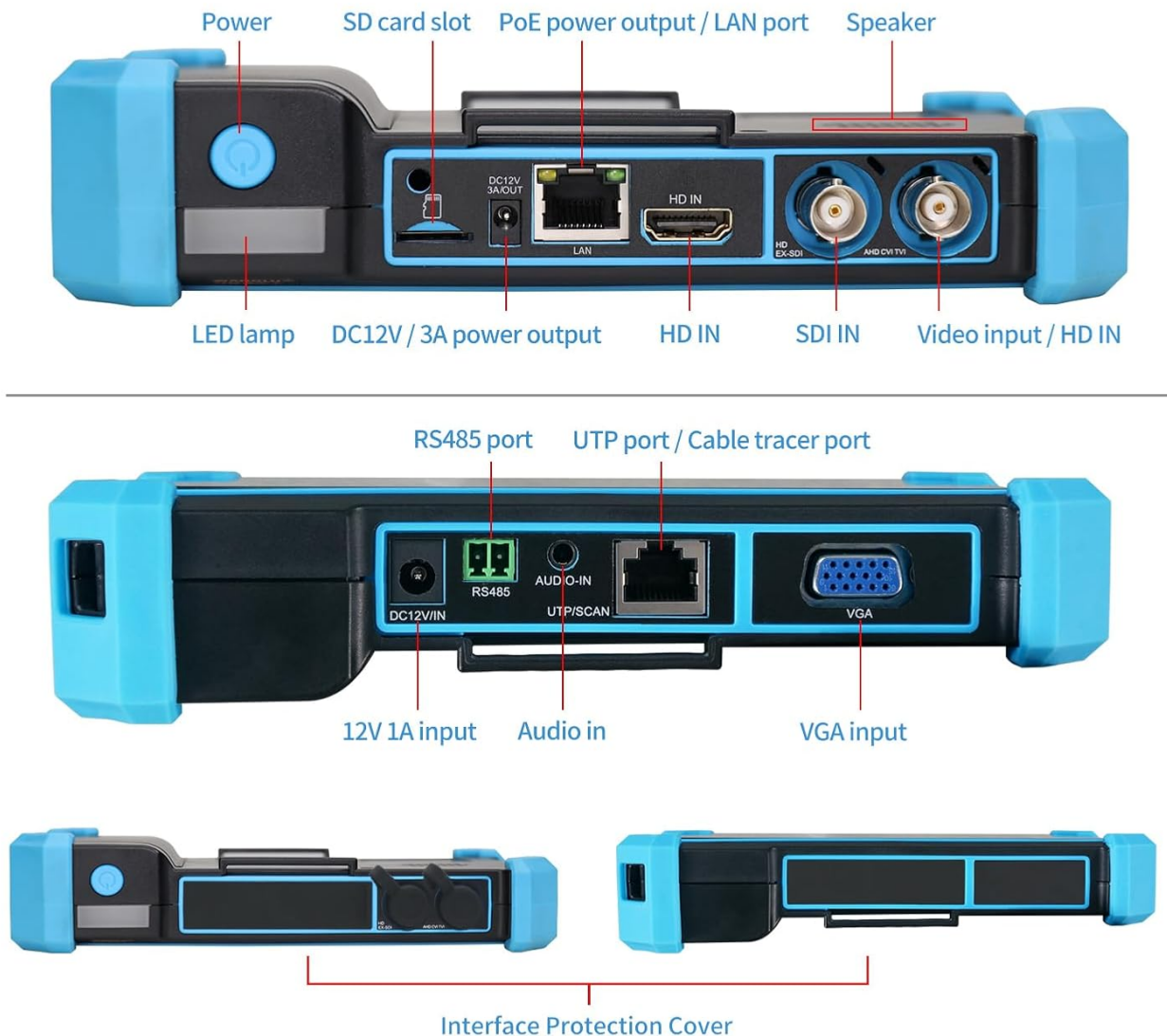


Image: Detailed diagram showing the top and bottom ports of the IPC-5200C Plus, including Power, SD card slot, PoE power output/LAN port, Speaker, LED lamp, DC12V/3A power output, HD IN, SDI IN, Video input/HD IN, RS485 port, UTP port/Cable tracer port, 12V 1A input, Audio in, and VGA input.



Image: Close-up view of the application ports, highlighting the DC/12V/3A power output, LAN/PoE port, HD IN, SDI IN, Video IN, RS485, Audio IN, UTP/SCAN, and VGA ports.

## 5. OPERATING INSTRUCTIONS

### 5.1 IP Camera Test

The IPC-5200C Plus supports testing of IP cameras up to 8K 32MP resolution. This includes IP Discovery, Quick IP Test, RTSP play,

and client APK support.

- **IP Discovery:** Automatically scans the entire network segment to find IP addresses of connected devices. It can also auto-modify the tester's IP to match the network segment of the scanned cameras.
- **ONVIF Test:** Supports testing all ONVIF-compatible cameras. The tester can auto-login to the camera and display the camera image.
- **HIK/DH Test Tools:** Dedicated tools for Hikvision and Dahua cameras allow for quick batch settings, including modifying usernames, passwords, and IP parameters.



## IPC Camera Settings

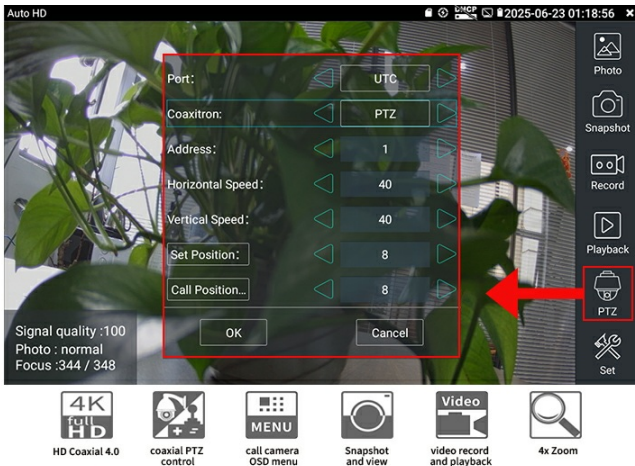
For camera, tester can auto login camera and display camera image.

A series of camera settings such as PTZ control, IP camera video settings, image setting, identification, time set, maintenance, camera user set, network setting, etc.

Support create testing report.



Image: Screenshot of the IPC Camera Settings interface, showing options for auto-login, image display, PTZ control, image settings, and network settings.



## Coaxial PTZ Control & OSD Menu

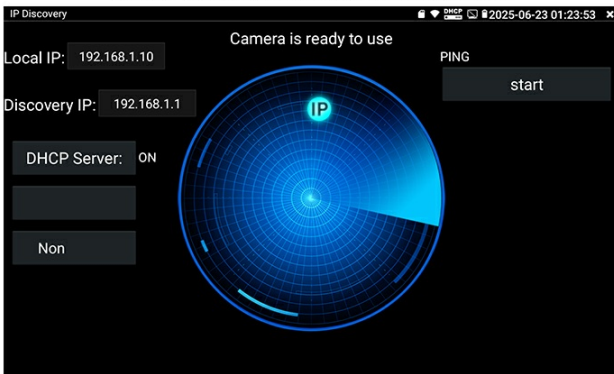
Auto recognize HD coax camera type and resolution, 4x zoom, video record & playback, coaxial PTZ control & call OSD menu.



Image: Overview of IP Camera Test features, including 8K 32MP IP PoE Camera Test, IP Discovery, Quick IP Test, RTSP play, and Client APK support.

## IP Discovery

Auto-scan the whole network segment IP address, tester can auto-modify the tester's IP to the same network segment with the scanned.



## Fast IP Conflict Scan

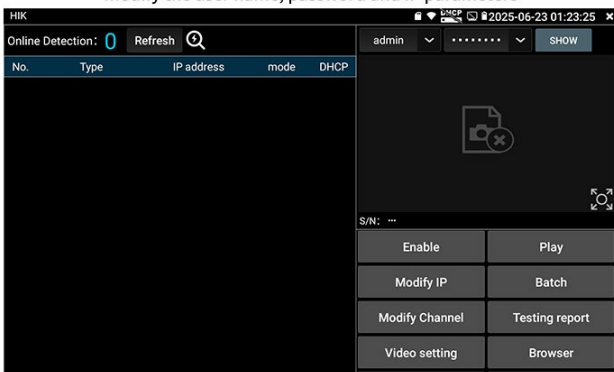
Quickly find the IP address of the IP camera or other device connected to the Tester, supporting scanning MAC address, camera manufacturer, and IP conflicts.



Image: Screenshots demonstrating IP Discovery (auto-scanning network segment IP addresses) and Fast IP Conflict Scan (quickly finding IP addresses and supporting MAC address, camera manufacturer, and IP conflict resolution).

## HIK Test Tool

Pressing just one key to activate hik camera, Image test, can modify the user name, password and IP parameters



## DH Test Tool

DH camera test, modify the user name, password and IP parameters. Support activate and modify IP in batches

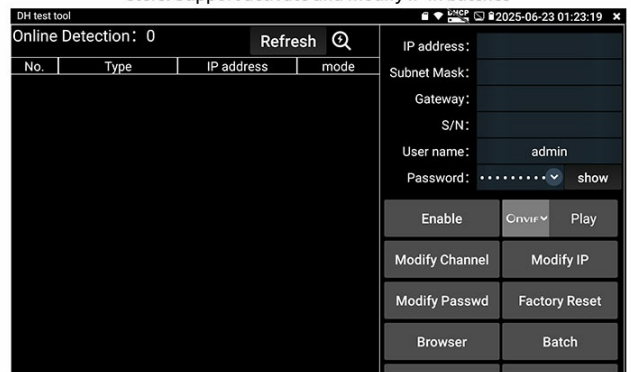


Image: Screenshots of the HIK Test Tool (one-key activation, image test, modify username/password/IP) and DH Test Tool (batch activation/modification of cameras).

Your browser does not support the video tag.

Video: Demonstration of IPC-5200C Plus IP Discovery and Rapid ONVIF Camera Test. This video shows how to connect an IP camera, use the IP Discovery function to find the camera on the network, and then access its video feed through the ONVIF test feature, including basic controls.

## 5.2 Coaxial CCTV Camera Test

The tester supports various coaxial camera types, including TVI, AHD, CVI, SDI, and CVBS, with resolutions up to 8MP.

- **Auto HD:** The built-in "Auto HD" app automatically recognizes the camera type (AHD/TVI/CVI/SDI) and displays the video feed.
- **PTZ Control & OSD Menu:** Supports UTC PTZ control and allows access to the camera's OSD menu for configuration.

## Auto HD & CVBS



TVI
CVI
AHD
SDI
CVBS

Auto recognize HD coaxial camera type and max 4K 8MP 3840 x 2160P resolution CVBS NTSC/PAL(Auto adapt)



HD Coaxial 4.0



coaxial PTZ control



call camera OSD menu



Snapshot and view



video record and playback



4x Zoom

### Resolution comparison table:

HD coaxial camera type/ Resolution	720P	1080P	3MP	4MP	5MP	6MP	4K(8MP)
CVI 4.0	1280 x 720P 25/30/50/60 FPS	1920 x 1080P 25/30 FPS	—	2560 x 1440P 25/30 FPS	2592 x 1944P 20FPS	2880 x 1920P 20FPS	3840 x 2160P 12.5/15 FPS
TVI 5.0	1280 x 720P 25/30/50/60 FPS	1920 x 1080P 25/30 FPS	2048 x 1536P 18/25/30 FPS	2688x1520P 15FPS 2560 x 1440P 15/25/30 FPS	2592 x 1944P 12.5/20FPS	—	3840 x 2160P 12.5/15 FPS
AHD 4.0	1280 x 720P 25/30/50/60 FPS	1920 x 1080P 25/30 FPS	2048 x 1536P 18/25/30 FPS	2560 x 1440P 15/25/30 FPS	2592 x 1944P 12.5/20FPS	—	3840 x 2160P 15 FPS

SDI type/Resolution	720P	1080P	1080i	4K(8MP)
HD-SDI	1280x720P 25/30/50/60 FPS	1920x1080P 25/30/50/60 FPS	1920x1080i 50/60 FPS	—
EX-SDI	1280x720P 25/30/50/60 FPS	1920x1080P 25/30/50/60 FPS	1920x1080i 50/60 FPS	3840x2160P 20/30 FPS

Image: Screenshot of the Auto HD interface, showing automatic recognition of coaxial camera types and resolution, along with a resolution comparison table for CVI, TVI, AHD, and SDI formats.



Image: Diagram illustrating the Auto HD app's ability to recognize HD coaxial camera types and resolutions (8MP TVI/AHD/CVI/SDI) and CVBS NTSC/PAL auto-adaptation.

## Auto HD & Coaxial Camera Test

Auto HD app, auto recognize HD coax camera type and resolution, 8MP TVI/AHD/CVI/SDI test, 3840 x 2160P 15 FPS  
CVBS camera test, NTSC/PAL (Auto adapt).

Resolution comparison table:

HD coaxial camera type/Resolution	720P	1080P	3MP	4MP	5MP	6MP	4K(8MP)
CVI 4.0	1280 x 720P 25/30/50/60 FPS	1920 x 1080P 25/30 FPS	—	2560 x 1440P 25/30 FPS	2592 x 1944P 20FPS	2880 x 1920P 20FPS	3840 x 2160P 12.5/15 FPS
TVI 5.0	1280 x 720P 25/30/50/60 FPS	1920 x 1080P 25/30 FPS	2048 x 1536P 18/25/30 FPS	2688x1520P 15FPS 2560 x 1440P 15/25/30 FPS	2592 x 1944P 12.5/20FPS	—	3840 x 2160P 12.5/15 FPS
AHD 4.0	1280 x 720P 25/30/50/60 FPS	1920 x 1080P 25/30 FPS	2048 x 1536P 18/25/30 FPS	2560 x 1440P 15/25/30 FPS	2592 x 1944P 12.5/20FPS	—	3840 x 2160P 15 FPS

SDI type/Resolution	720P	1080P	1080i	4K(8MP)
HD-SDI	1280x720P 25/30/50/60 FPS	1920x1080P 25/30/50/60 FPS	1920x1080i 50/60 FPS	—
EX-SDI	1280x720P 25/30/50/60 FPS	1920x1080P 25/30/50/60 FPS	1920x1080i 50/60 FPS	3840x2160P 20/30 FPS

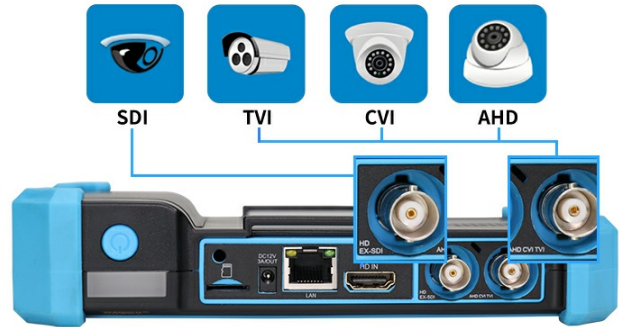


Image: Screenshot showing the Coaxial PTZ Control and OSD Menu interface, allowing for camera movement, snapshot, video recording, and playback.

Your browser does not support the video tag.

Video: Demonstration of IPC-5200C Plus Coaxial Camera Test (NTSC/PAL). This video illustrates how to connect a coaxial camera to the tester, automatically detect its signal, and access the PTZ control and OSD menu for adjustments.

### 5.3 Cable Testing

The IPC-5200C Plus offers comprehensive cable testing functionalities.

- **Digital Cable Tracer (WT255):** Locate network cables, BNC cables, and telephone cables quickly and accurately, rejecting noise and false signals. Supports network cable test, host/test box fault location, short circuit test, and PD power test.
- **RJ45 Cable Tester:** Tests speed, continuity, arrangement order, and fault location of network cables. Displays UTP cable connection status on screen.
- **RJ45 TDR Cable Test:** Tests cable pair status, length, attenuation, reflectivity, impedance, and skew. Measurement range up to 180m (590ft).

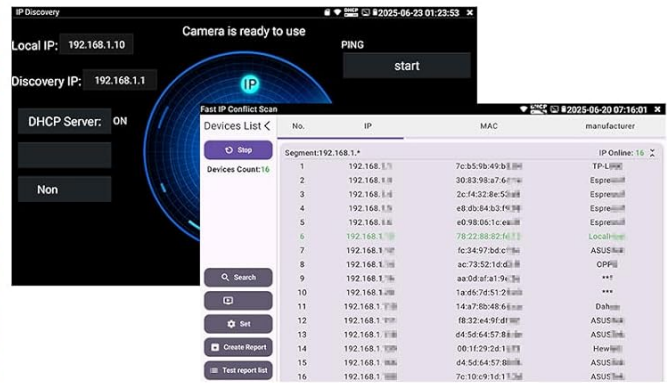
## POE 48V/ DC12V/3A POWER OUTPUT

Power output for PoE camera, and detect camera power at the same time



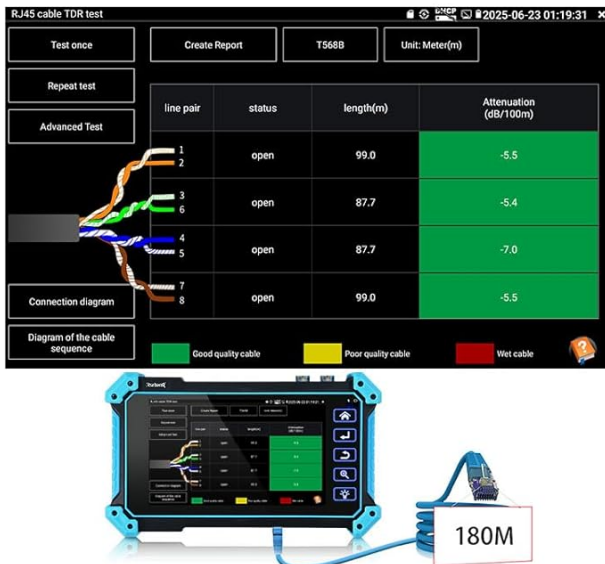
## IP Discovery & Fast IP Conflict Scan

Auto-scan the whole network segment IP address, tester can auto-modify the tester's IP to the same network segment with the scanned. Supporting scanning MAC address, camera manufacturer, and IP conflicts.



## RJ45 TDR Cable Tester

Test cable pair status, length, attenuation, reflectivity, impedance, skew etc. measurement range 180m (590ft)



## UTP Cable Tester

Test UTP cable connection status and display on the screen. Can detect the near-end, mid-end and far-end fault point of RJ45 cable connector

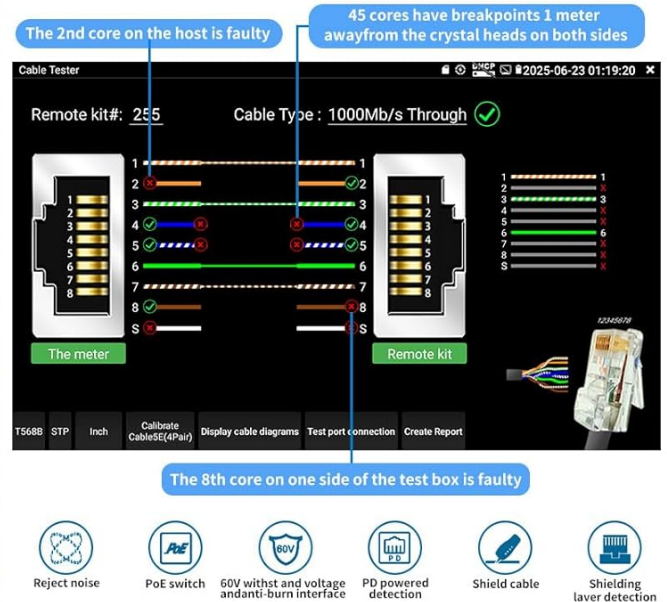


Image: Overview of cable testing features, including PoE 48V/DC12V/3A power output, IP Discovery & Fast IP Conflict Scan, RJ45 TDR Cable Tester, and UTP Cable Tester.

## WIFI Analyzer

## WIFI Hotspot

Built-in wireless network WIFI function, 2.4GHz Display image from the wireless camera, create WIFI hotspot The screen of the tester can be projected onto the Android cell phone in the same hotspot. Professional WIFI analyzer, support view wifi information, test wifi strength, analyze channel occupancy and channel level, etc.



Image: Visual representation of the IPC-5200C Plus as a multifunction network cable tester, highlighting UTP Cable Test, RJ45 TDR Cable Test, and Digital Cable Tracer functions.

## Network Tools

Professional network testing tools IP scan, Trace route, Link monitor, Link statistics, DHCP server, Port flashing, Ping test, LLDP etc, which can quickly and efficiently conduct network testing.

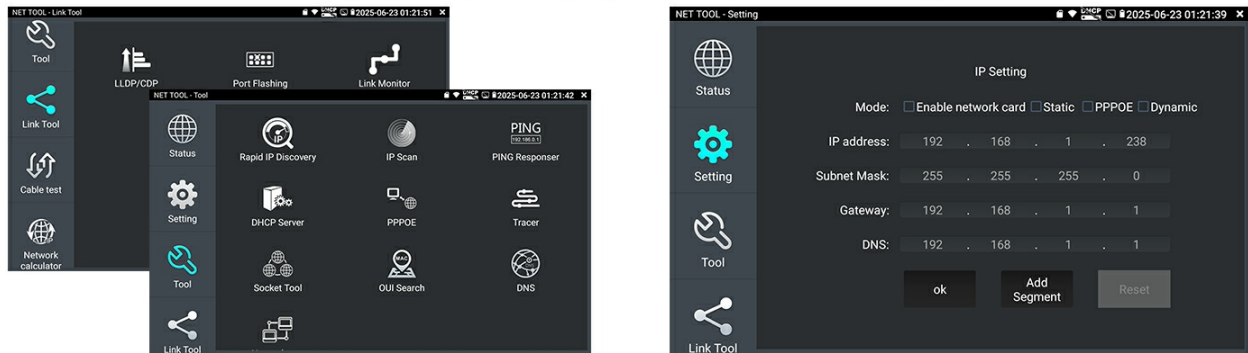


Image: Screenshots showing the Digital Cable Tracer WT255 in action, identifying cable faults and providing details on BNC, network, and telephone cable tracing. Includes electroscopie voltage range and frequency information.

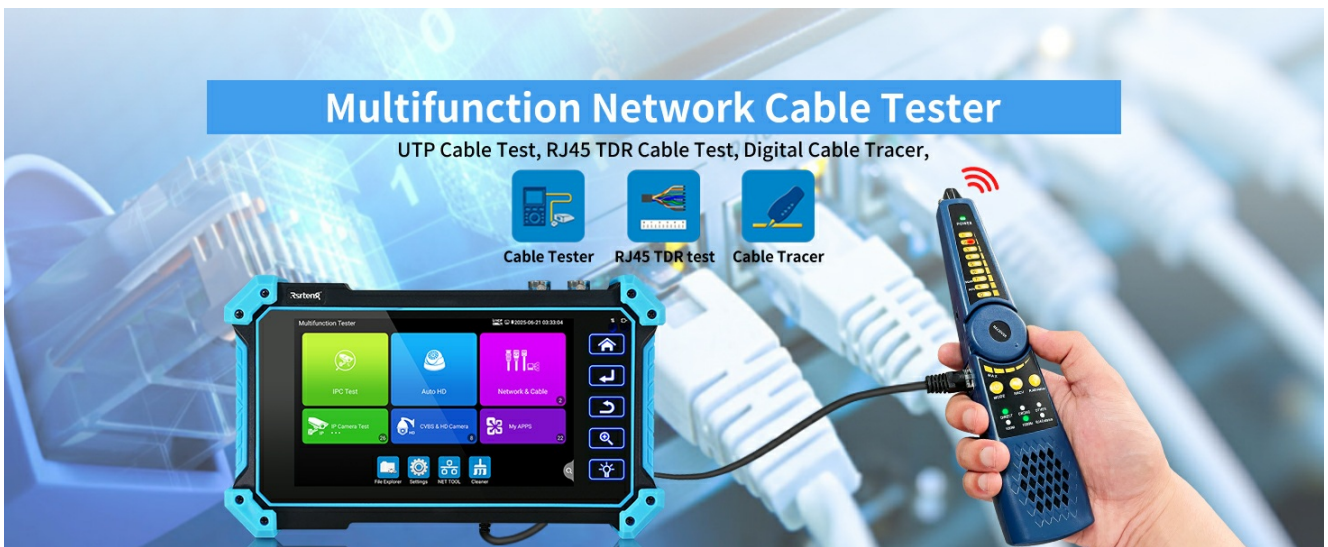


Image: Screenshots demonstrating the RJ45 Cable Tester (displaying cable sequence and status) and RJ45 TDR Cable Test (showing cable pair status, length, attenuation, and reflectivity).

Your browser does not support the video tag.

Video: Demonstration of Cable Tracer WT255 AC Voltage Detector. This video shows how to use the cable tracer to identify network cables, test for voltage presence, and interpret the indicator lights for cable sequence and type.

Your browser does not support the video tag.

Video: Demonstration of UTP cable test, RJ45 TDR cable test, and saving test reports. This video guides through performing UTP cable tests, RJ45 TDR tests to check cable status, length, and attenuation, and how to generate and save test reports.

### 5.4 PoE Power Output

The tester can provide PoE power (IEEE802.3af/at, 48V, max 25.5W) to power cameras directly, simplifying on-site testing without external power sources.

The 2nd core on the host is faulty

45 cores have breakpoints 1 meter away from the crystal heads on both sides

The 8th core on one side of the test box is faulty

### Digital Cable Tracer WT255

Cable tracer and UTP cable test app in the same interface, quickly search BNC cable, network cable and telephone cable from the mess cables, also can search shield cable.

Support network cable test, host/test box fault location, short circuit test, PD power test.

Electroscope: Voltage range:AC12 to 1000V, Frequency:50/60Hz, Alarm type:Sounds and light double alarms, Level:CAT.III 1000V / CAT.IV 600V;CE.

Image: Screenshot showing the PoE Power Output interface, indicating the PoE/DC power output status and power consumption.

### 5.5 HDMI & VGA Input

The IPC-5200C Plus can function as a display monitor for devices with HDMI or VGA output, supporting resolutions up to 4K 3840x2160@30fps (HDMI) and 1920x1080@60fps (VGA). It supports display, record, screenshot, and playback of incoming images.

**Note:** The tester cannot reverse control signal output devices; it is only used as a monitor.

#### HD input

max 4K 3840x2160 30fps tester will act as a display

#### VGA input

tester will act as a display max 1920x1080 60fps

#### HD & VGA input

HD and VGA input functions allow you to use the tester as a monitor. Support display, record, screenshot, and playback incoming images. **Note: The tester cannot reverse control signal output devices, it is only used as a monitor.**

## Digital Cable Tracer

Can search network cable, BNC cable and shielded cable, decisively rejects noise and false signals. Locate cables quickly and easily. Cable tracer and cable sequence test app in the same interface, can improve work efficiency.

UTP/Scan port

PoE switch supply power's pin: 1236. 4578

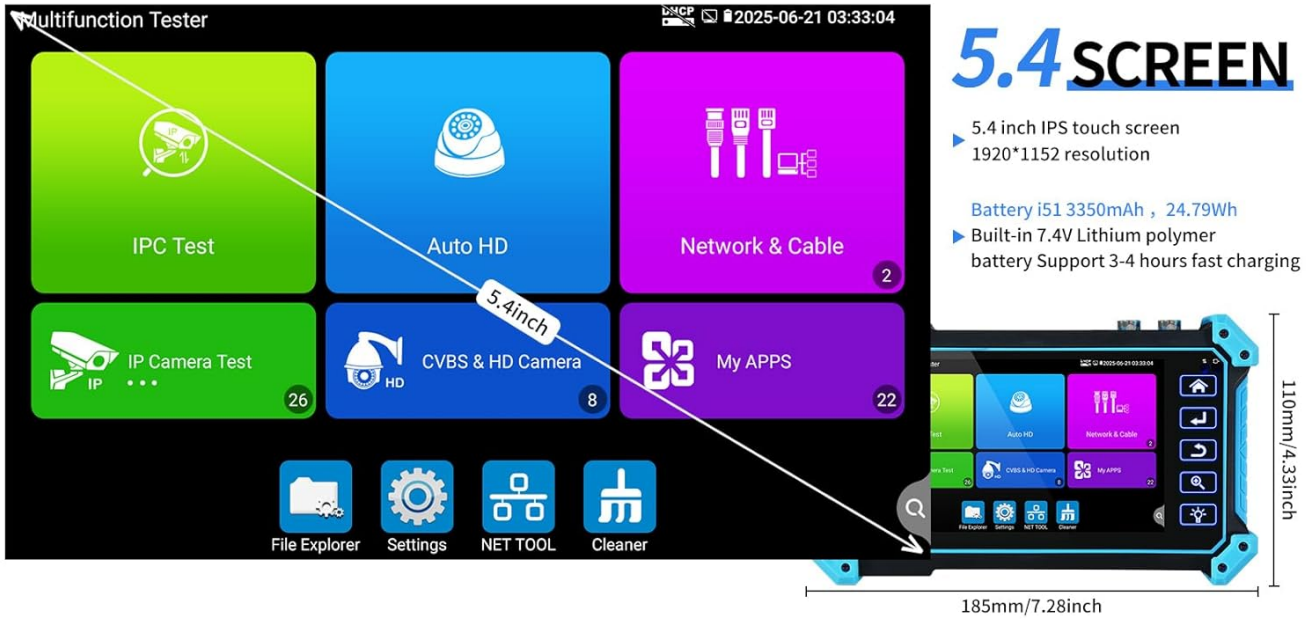
PoE and PSE switch powered test, judge PoE power whether is normal, and hrough power by Pin "1236" or "4578" or both

Image: Diagram illustrating the use of HD (HDMI) and VGA inputs, showing the tester connected to an NVR as a display monitor.

## 5.6 Network Tools

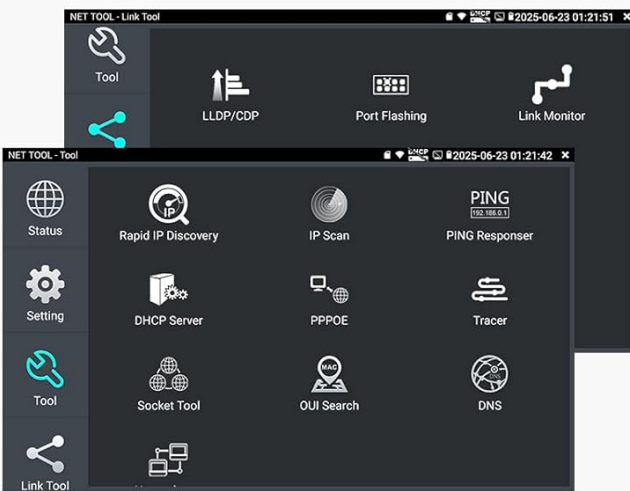
The device includes professional network testing tools for efficient network diagnostics:

- IP Scan
- Trace Route
- Link Monitor
- DHCP Server
- Port Flashing
- Ping Test
- LLDP
- And more...



### Network Tools

Professional network testing tools IP scan, Trace route, Link monitor, Link statistics, DHCP server, Port flashing, Ping test, LLDP etc, which can quickly and efficiently conduct network testing.



### Built-in Wifi, Wifi Analyzer

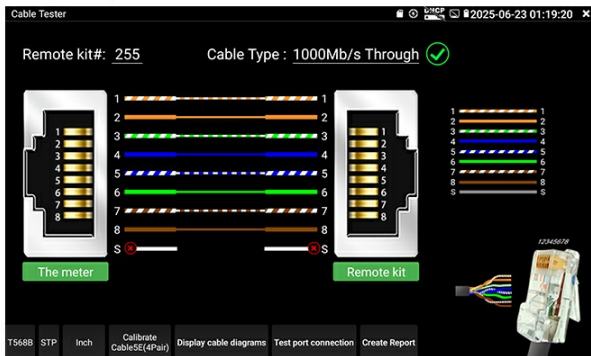
Auto-scan the whole network segment IP address, tester can auto-modify the tester's IP to the same network segment with the scanned.



Image: Screenshot of the Network Tools interface, displaying various diagnostic utilities like Link Tool, Cable Test, Network Calculator, Status, Rapid IP Discovery, IP Scan, Ping Responder, DHCP Server, PPPOE, Tracer, Socket Tool, OUI Search, and DNS.

## RJ45 Cable Tester

Cable tester and quickly test the speed, continuity, arrangement order, fault location of network cables. Test UTP cable connection status, speed, continuity, arrangement order, fault location status and display on the screen.



## RJ45 TDR Cable Test

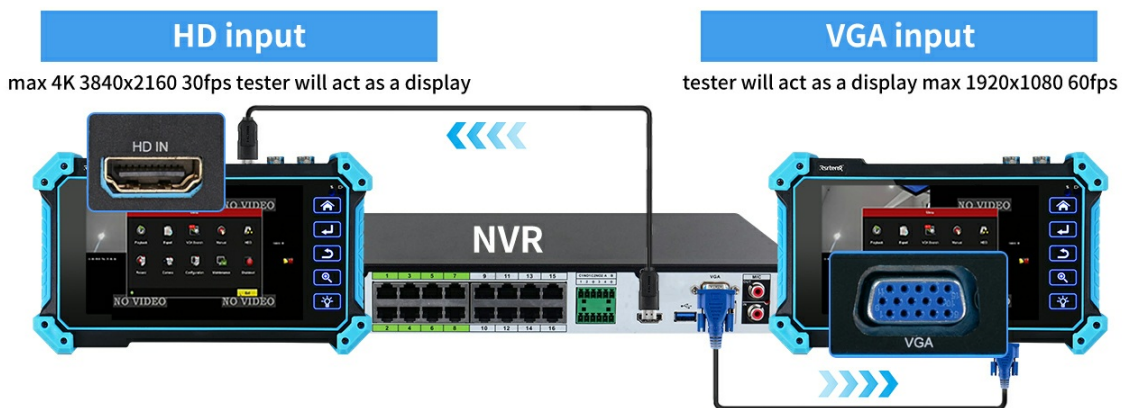
Test cable pair status, length, attenuation, reflectivity, impedance, skew etc. measurement range 180m(590ft)



Image: Screenshots of the Network Tools interface, showing various network testing functions such as IP scan, trace route, link monitor, DHCP server, port flashing, and ping test.

## 5.7 WiFi Analyzer & Hotspot

The built-in WiFi function allows the tester to create a WiFi hotspot, enabling the display of camera images from wireless cameras. The professional WiFi Analyzer provides detailed information on WiFi occupancy, signal strength, and channel level analysis.



HD and VGA input functions allow you to use the tester as a monitor. Support display, record, screenshot, and playback incoming images. **Note: The tester cannot reverse control signal output devices, it is only used as a monitor.**

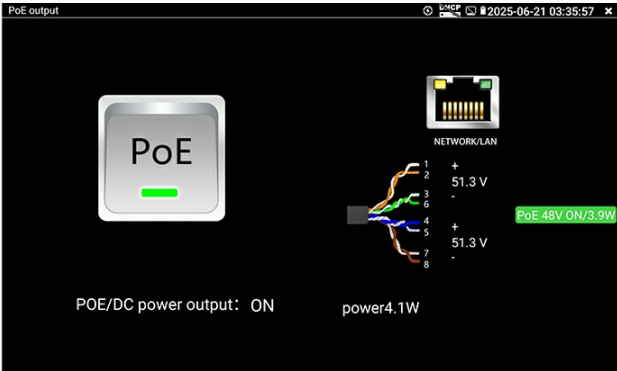
Image: Screenshots demonstrating the WiFi Analyzer (displaying signal strength charts and channel levels) and WiFi Hotspot (for connecting wireless cameras and projecting the tester's screen to an Android phone).

## 6. MAINTENANCE

- **Cleaning:** Use a soft, dry cloth to clean the device. Avoid using abrasive cleaners or solvents.
- **Storage:** Store the tester in a cool, dry place away from direct sunlight and extreme temperatures.
- **Battery Care:** To prolong battery life, avoid fully discharging the battery frequently. Charge the device regularly, even if not in use for extended periods.
- **Software Updates:** The Android operating system allows for application updates. Connect to the internet to check for and install the latest software versions for optimal performance.

## PoE Power Output

Power output for camera, and detect camera power at the same time



## Electronic Manual

Built-in electronic manual, it can help you become more proficient in Tester operation

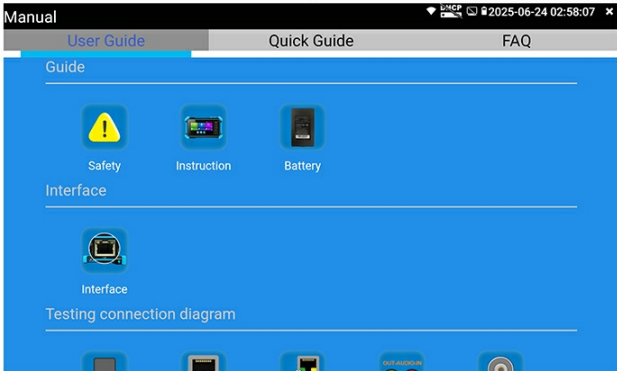


Image: Screenshots showing the Application Update interface (Local Update, Online Update, App Management) and Multi-language selection options.

## 7. TROUBLESHOOTING

If you encounter issues with your IPC-5200C Plus, consider the following common solutions:

- **Device Not Powering On:** Ensure the battery is charged. Connect the power adapter and try again.
- **No Camera Image:** Verify all cables are securely connected. Check camera power supply (if using PoE, ensure the camera supports it). For IP cameras, confirm network connectivity and correct IP settings. For coaxial cameras, ensure the correct signal type is selected or use "Auto HD".
- **Cable Test Errors:** Re-check cable connections. Ensure the remote unit is properly connected for cable tests. Refer to the on-screen diagrams for correct wiring sequences.
- **Slow Performance:** Close unnecessary applications running in the background. Perform a system cleanup if available.
- **Network Connectivity Issues:** Use the built-in network tools (Ping, IP Scan) to diagnose network problems. Check WiFi settings if using a wireless connection.

For further assistance, please refer to the electronic manual built into the device or contact Rsrting customer support.



Image: Screenshot of the Electronic Manual interface, providing user guides, quick guides, and FAQs for Tester operation.

## 8. SPECIFICATIONS

Feature	Detail
Display	5.4 inch IPS touch screen, 1920x1152 resolution
Operating System	Android 11.0
IP Camera Test	Max 8K 32MP H.265/H.264, IP Discovery, Quick ONVIF, RTSP, Client APK
Coaxial Camera Test	Max 8MP TVI/AHD/CVI/SDI, CVBS (NTSC/PAL auto adapt), UTC PTZ control, OSD menu
HDMI Input	Max 4K 3840x2160 30fps
VGA Input	Max 1920x1080 60fps
PoE Power Output	IEEE802.3af/at 48V, max 25.5W
DC12V/3A Power Output	Provides power supply for cameras
Digital Cable Tracer	Search BNC, network, telephone cables, PD power test
UTP Cable Test	Cable connection status, fault location (near-end, mid-end, far-end)
RJ45 TDR Cable Test	Cable pair status, length, attenuation, reflectivity, impedance, skew (max 180m)
Battery	7.4V/3350mAh Lithium-ion, 24.79Wh, 3-4 hours charging for 6 hours operation
Dimensions	185x110x41mm (7.28x4.33x1.61 inches)
Weight	0.43kg (0.95lbs)

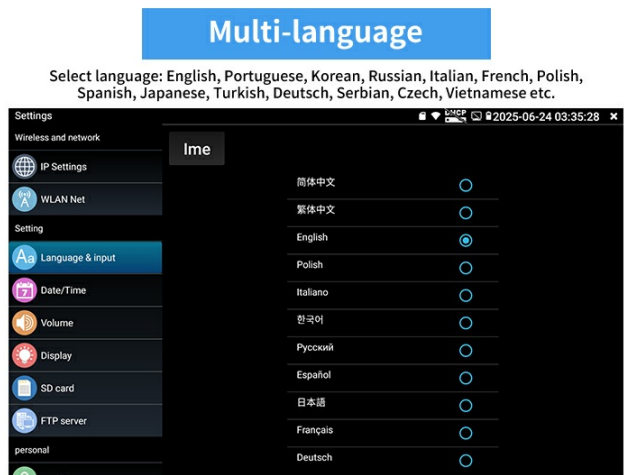
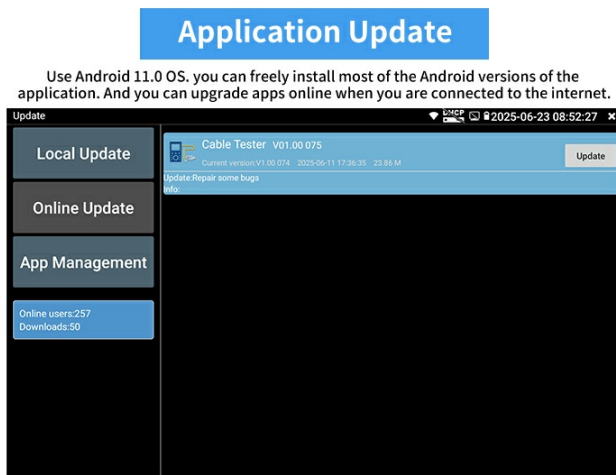


Image: Comprehensive table detailing the product parameters and specifications of the IPC-5200C Plus.



## Application Port

Support DC /12V.3A power output, provide power supply for the camera, so that the camera test more convenient, you can test the camera anywhere, anytime.

Universal RS485 interface Easily use it to control cameras and other devices with RS485 interface.

Single gigabit ethernet ports (10/100/1000Mbps) allowing network quality to be seen at a glance and satisfying network testing at different speeds.

1 channel audio signal input, test whether sound normal, 1 channel audio signal, to connect headphone.

Image: Diagram showing the dimensions (length, width, thickness) and net weight of the IPC-5200C Plus.

### Product parameter :

Display	5.4 inch touch screen, 1920x1152 resolution		8MP TVI camera test, 3840x2160P 12.5/15fps, UTC control / call OSD menu
Operating System	Android 11.0		8MP CVI camera test, 3840x2160P 12.5/15fps, UTC control / call OSD menu
CVBS	1 channel BNC input, NTSC/PAL (Auto adapt)		8MP AHD camera test, 3840x2160P 15fps, UTC control / call OSD menu
	PTZ control, RS485 control, Baud 600-115200bps, compatible with more than 30 protocols such as PELCO-D/P, Samsung, Panasonic etc		8MP EX-SDI, HD-SDI, 3G-SDI, UTC control / call OSD menu
Network test & IP camera test	IP Discovery/Rapid /PC test /RTSP play /Client APK		Auto HD app, auto recognize HD coax camera type and resolution, support snapshot, video record& playback, coaxial PTZ & call OSD menu
	Support camera test. Main stream supports up to 4K 30fps resolution		HD input 1-ch HD input, support 4K_3840×2160P 30fps / 1920×1080P_7280×720P 25/30/50/60fps / 1920×1080i 50/60fps / 720×480P_720×576P_800×600P_1024×768P_1280×1024P 60fps
	Rapid	Auto view the video, create testing report	VGA input 1-ch VGA input, support 2048×1152P / 1920×1200P / 1920×1080P / 1792×1344P / 1680×1050P / 1600×1200/900P / 1440×900P / 1360×768P / 1280×1024/960/800/768/720P / 1152×870P / 1024×768P / 800×600P / 600×480P, 60fps
	For Hikvision test tool	Support batch activate for Hik cameras and modify IP address, modify password etc. Self-defined modify channel name, can quickly change video, open wide dynamic mode. Factory restore, etc.	Zoom Image 4x zoom, to enlarge image, Screen snapshot, record, save, view and record and play back
Tester Play	For Non-test tool	Support more brands proprietary Protocol Camera such as AXIS, for ACTI, for Dh, for Hik, for Samsung, for Tiandi Albert, for Keda, for Honeywell, for Aipu Wharton, for Funiteda, for Forvision, for WEISKY, etc.	DC12V/3A power output DC12V/3A power output, supply temporarily power for the camera
	Network test tool	IP scan, Trace route, Link monitor, DHCP server, Port flashing, Ping test etc.	PoE power output 48V PoE power output, max power 25.5W
Wi-Fi	Built-in WiFi, speeds 150Mbps, display wireless camera image		Digital Cable tracer Search BNC cable, network cable and telephone cable from the mess cables. Cable search and UTP cable can test at the same time
Audio test	1 channel audio signal input, test whether sound normal. Built-in speaker		UTP cable test Test UTP cable connection status and display on the screen. Can detect the near-end, mid-end and far-end fault point of the network cable crystal head.
Power management	Display DC 12V input & output voltage and power in real time Display POE output voltage and power in real time		RJ45 TDR cable test Test cable pair status, length, attenuation, reflectivity, impedance, skew, can create test report. measurement range 180M.
Data monitor	Captures and display the command data from RS485 controlling device, also possible to send hex codes		Battery Built-in 7.4V Lithium polymer battery, 3350mAh
Power supply	DC 12V/1A		Rechargeable After charging 3-4 hours, normal working time about 6 hours
Auto off	1-30 (mins)		Operation language OSD menu language: English, Chinese, Korean, Russian, Italian, French, Polish, Spanish, Japanese, Deutsch, Turkish, Serbian, Portuguese, Czech, Vietnamese etc
Working Humidity	30%-90%		Working Temperature -10°C---+50°C (14°F---122°F)
			Dimension/Weight 185x110 x 41mm / 0.43kg (7.28x4.33x1.61inch / 0.95lbs)

Image: Detailed information about the IPC-5200C Plus battery (i51), including capacity (3350mAh, 24.79Wh), type (built-in 7.4V Lithium polymer), and fast charging support.

## 9. WARRANTY AND SUPPORT

Rsteng is committed to providing high-quality products and customer satisfaction. For any technical support, warranty claims, or service inquiries, please contact the seller or refer to the official Rsteng website for detailed support information. We have a professional technical team available for consultation to ensure all your questions are addressed.