

## POLONO PL60

# POLONO PL60 Thermal Label Printer User Manual

Model: PL60 | Brand: POLONO

## INTRODUCTION

---

This manual provides comprehensive instructions for the setup, operation, and maintenance of your POLONO PL60 Thermal Label Printer. Please read this guide thoroughly before using the printer to ensure optimal performance and longevity.

## PACKAGE CONTENTS

---

Verify that all items listed below are included in your package:

- 1 Grey POLONO PL60 Thermal Label Printer
- 1 Power Cord
- 1 USB Cable
- 1 U Disk (containing printer driver, installation guide, setup guide, and user manual)
- 1 Quick Start Guide
- 10pcs 4"x6" Labels (sample)

# Package Includes

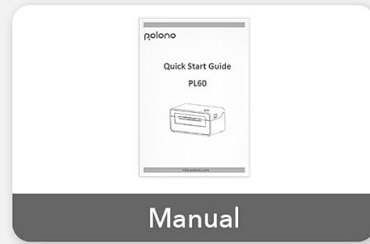


Image: All components included in the POLONO PL60 printer package, including the printer, cables, U disk, quick start guide, and sample labels.

## SETUP INSTRUCTIONS

- 1. Connect Power and USB Cable:** Connect the power cord to the printer and a power outlet. Connect the USB cable from the printer to your computer (Windows or Mac).

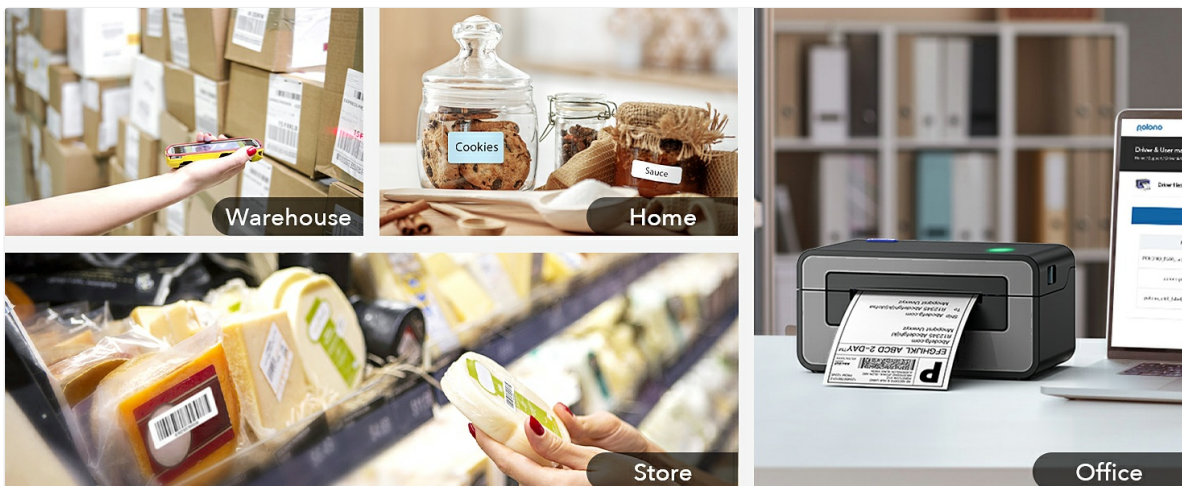


Image: Step 1 of setup, showing the power and USB cables being connected to the printer.

2. **Install Driver:** Insert the included U Disk into your computer. Install the printer driver. Alternatively, download the latest driver from the official POLONO website. The printer is compatible with Windows and Mac operating systems. *Note: This printer does not support Bluetooth or Chromebook.*



Image: The POLONO PL60 printer connected to a laptop, indicating compatibility with Mac and Windows systems.

3. **Load Labels:** Open the printer cover. Place the thermal labels into the label compartment, ensuring the print side faces up. Adjust the label guides to fit the label width snugly. Close the cover.



Image: Step 3 of setup, demonstrating how to load labels into the printer's compartment.

4. **Automatic Label Alignment:** After loading labels and closing the cover, press the feed button on the printer. The printer will automatically detect the label size and align the labels for printing.



Image: The POLONO PL60 printer with labels loaded, showing the automatic label detection feature.

## OPERATING INSTRUCTIONS

### Printing Labels

The POLONO PL60 printer uses advanced thermal direct technology, eliminating the need for ink or toner. It supports label widths from 1.57 inches (40 mm) to 4.65 inches (118 mm).

- **Prepare Your Document:** Ensure your label design or shipping label is correctly formatted for a 4x6 inch label (or other supported sizes).
- **Select Printer:** In your computer's print dialog, select "POLONO PL60" as your printer.
- **Print Settings:** Adjust print settings as needed. For optimal print quality, you may need to adjust the print density/darkness and speed in the printer preferences. Slower speeds generally result in better print quality.
- **Initiate Print:** Click "Print" to send the label to the printer. The printer can achieve speeds of 150mm/s, printing approximately 72 labels per minute.

# High Efficiency & Quality

4"x6" **72** pcs/min

**150** mm/s

**203** DPI



Image: The POLONO PL60 printer printing a label, highlighting its high efficiency and print quality.

## Adjusting Print Darkness and Speed (Windows Example)

To customize print quality, follow these steps:

1. Go to your computer's **Settings > Printers & Scanners**.
2. Select the **POLONO Label Printer** and click **Manage**.
3. Go to **Printer Preferences**.
4. In the **Advanced Setting** window, click on **Speed** and select **Customize Print Speed**. Adjust the slider to a slower speed for better print quality.
5. Similarly, adjust **Darkness** settings to achieve desired label contrast.

Your browser does not support the video tag.

Video: Instructions on how to adjust the print darkness settings for the POLONO PL60 printer.

## Supported Label Sizes

The printer supports various label sizes, including:

- 4"x6"
- 3"x2"

- 3"x1"
- 2"x1"
- 2-5/16" x 4"
- 2.25"x1.25"
- 2-inch round labels



Image: Visual representation of different label sizes that the POLONO PL60 printer can automatically detect and print.

## MAINTENANCE

The POLONO PL60 is a thermal direct printer, meaning it does not require ink cartridges or toner. This simplifies maintenance significantly.

- **Cleaning the Print Head:** Periodically clean the print head with an alcohol wipe to ensure clear print quality. Refer to the detailed user manual on the U Disk for specific cleaning instructions.
- **General Cleaning:** Keep the printer free from dust and debris. Use a soft, dry cloth to wipe the exterior.

## TROUBLESHOOTING

## Common Issues and Solutions

### Printer Not Responding / Not Printing:

- Ensure the power cord and USB cable are securely connected.
- Verify the printer is turned on (indicated by the LED light).
- Check if the correct printer driver is installed and updated.
- For Mac users experiencing issues, try uninstalling the driver, deleting the printer from your computer settings, then reinstalling the driver from the provided U Disk and re-adding the printer.

### Faded or Poor Print Quality:

- Adjust the print darkness setting in your printer preferences (refer to "Adjusting Print Darkness and Speed" section).
- Ensure you are using high-quality thermal labels.
- Clean the print head as described in the Maintenance section.

### Labels Not Feeding Correctly / "Out of Labels" Error:

- Ensure labels are loaded correctly with the print side up.
- Adjust the label guides to fit the label width.
- Press the feed button to allow the printer to automatically detect and align the labels.

## SPECIFICATIONS

Feature	Detail
Brand	POLONO
Model Name	PL60
Connectivity Technology	USB
Printing Technology	Thermal
Color	Grey
Printer Output	Monochrome
Max Print Speed (Monochrome)	150mm/s (72 labels/minute)
Item Weight	1.9 Kilograms
Product Dimensions (D x W x H)	11.5" x 6" x 6"
Resolution	203 x 203 DPI
Maximum Media Size	4 x 6 inch
Supported Paper Sizes	4"x6", 3"x2", 3"x1", 2"x1", 2.25"x1.25", 2-5/16" x 4", 2" Circle Inches
Compatible Devices	Laptops, Mac, PC, Windows

## WARRANTY AND SUPPORT

The POLONO PL60 Thermal Label Printer comes with a **1-year manufacturer's limited warranty**.

For further assistance, detailed user manuals, and driver downloads, please refer to the included U Disk or visit the official POLONO website.

You can also access the [User Guide \(PDF\)](#) for additional information.