

SpyShop B25

SpyShop 4K WiFi IP Camera Module with Wireless Earpiece (Model B25) User Manual

Model: B25

1. INTRODUCTION

This manual provides detailed instructions for the setup, operation, and maintenance of your SpyShop 4K WiFi IP Camera Module with Wireless Earpiece, Model B25. Please read this manual thoroughly before using the product to ensure proper functionality and safety.

2. PACKAGE CONTENTS

Verify that all items listed below are included in your package:

- 1 x Camera Module
- 1 x USB Charging Cable
- 1 x Wireless Earpiece
- 1 x Battery (Type 337)
- 1 x Set of Button Lens Covers



Standard package

User manual

Lens Cover

Wireless Micro Ear Device

Battery 337

USB cable

Camera



Image: Standard Package Contents

3. PRODUCT OVERVIEW

The SpyShop B25 is a compact 4K WiFi IP camera module designed for discreet surveillance and two-way communication. It features a flexible lens, motion detection capabilities, and an external battery for extended operation. The included wireless earpiece facilitates real-time audio communication.



Product view



Image: Product View of Camera Module

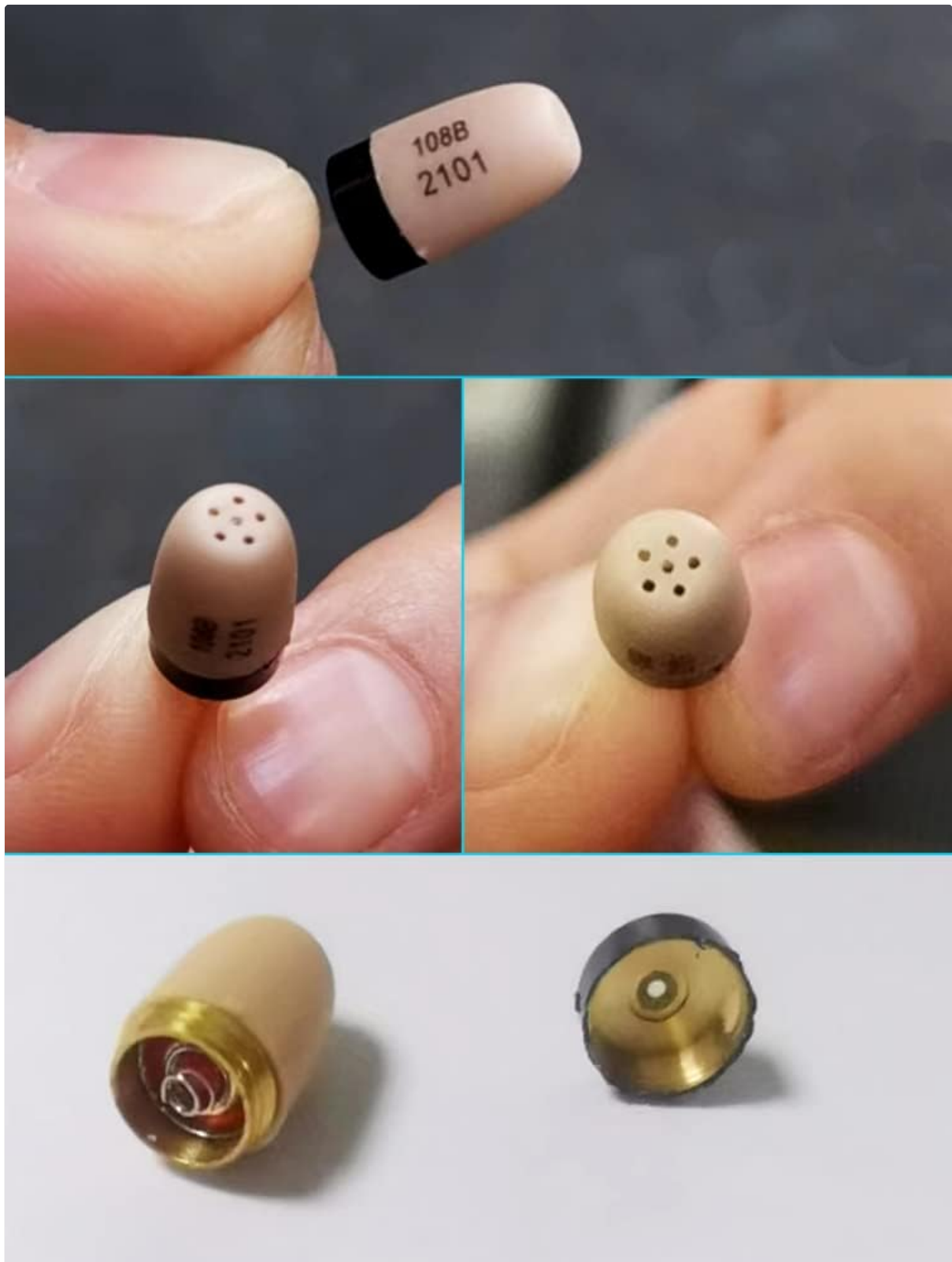


Image: Wireless Earpiece Components

4. SETUP

4.1 Earpiece Setup

1. Carefully insert the provided Type 337 battery into the wireless earpiece. The earpiece will automatically power on once the battery is correctly inserted.

4.2 Camera Placement and Concealment

The camera module is designed for discreet placement. Button lens covers are included for further

concealment. If using button covers, a small amount of glue or double-sided tape may be required to secure them. Be aware that using glue might fix the lens position, preventing focus adjustment. For optimal concealment and ease of operation, it is recommended to use medical skin-colored tape to secure the camera module to your hand. Alternatively, wearing a watch over the camera can also effectively hide the lens.

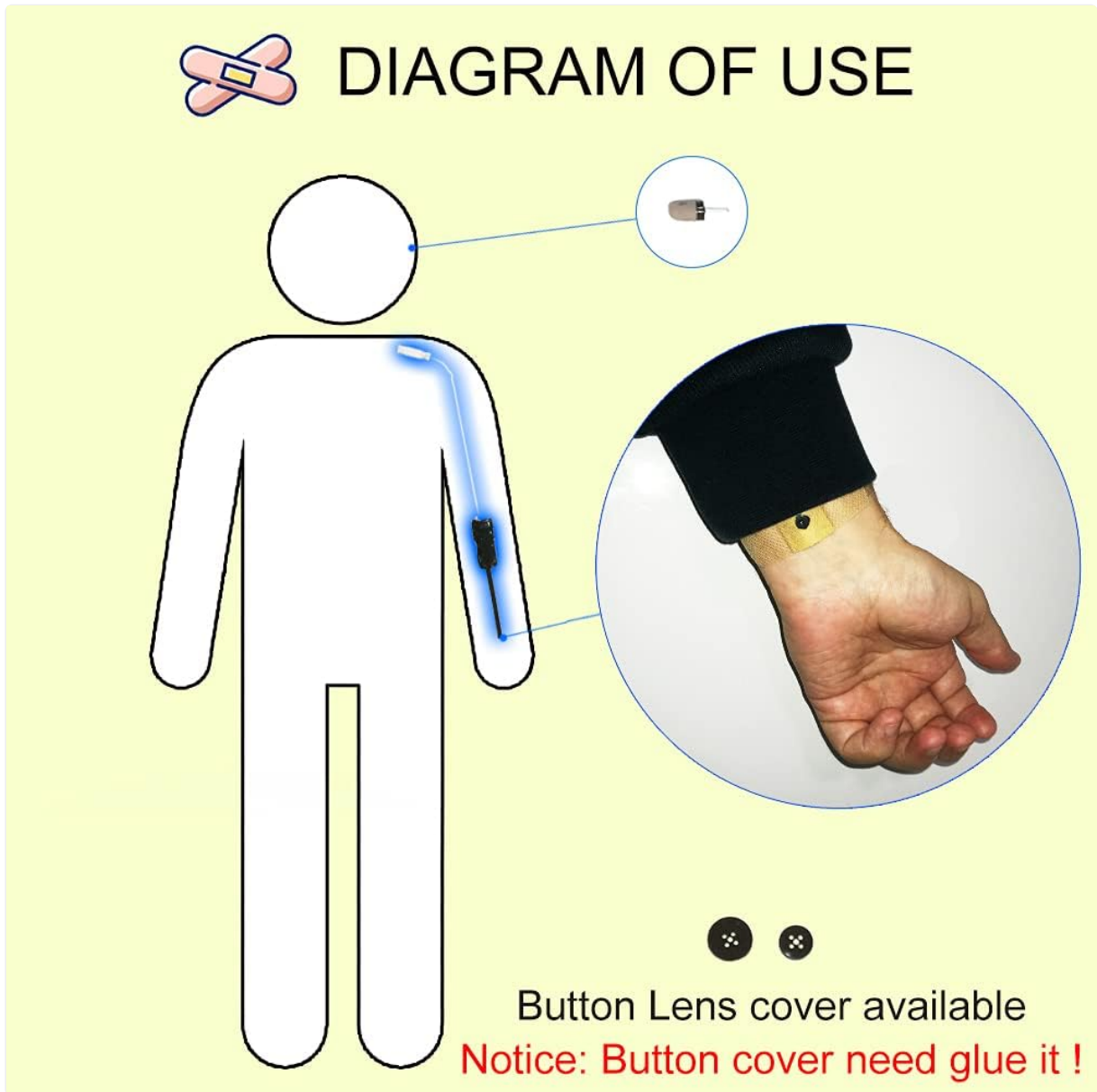


Image: Diagram of Camera Use and Lens Cover



We suggest use
medical tape to
fix it on hand.

Also can use watch.
That will cover
camera good
enough.



Image: Concealing Camera with Tape or Watch

4.3 App Installation

Download and install the 'HDCameraPro' application on your smartphone or tablet. This app is available for both iOS and Android devices.

5. OPERATING INSTRUCTIONS

5.1 Connecting to WiFi

The camera module supports WiFi connectivity for both local AP mode (within 6 meters of the camera) and P2P worldwide access. Follow the in-app instructions to connect your camera to your device's WiFi network or a 4G data hotspot.

5.2 Viewing Live Feed and Recording

Open the 'HDCameraPro' app on your smartphone. Once connected, you will be able to view the live video feed from the camera. The app allows you to record video or take photos directly to your phone. You can also insert a Micro SD card (up to 128 GB, not included) into the camera module for direct recording.

5.3 Two-Way Communication

The system supports two-way communication through the app and the wireless earpiece. To speak, simply

click the microphone (PTT) icon on the phone screen within the app. Your voice will be transmitted to the wireless earpiece.

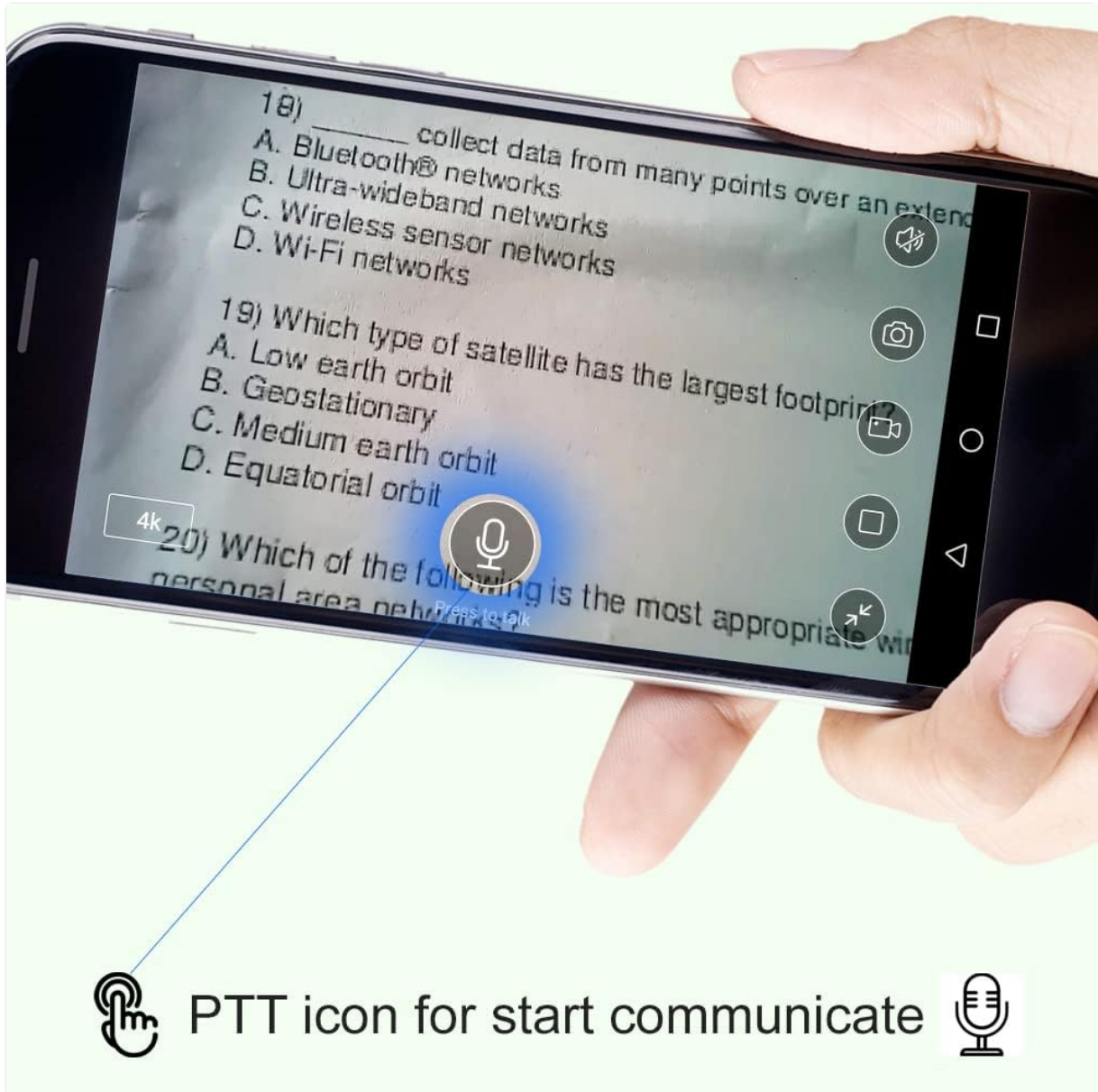
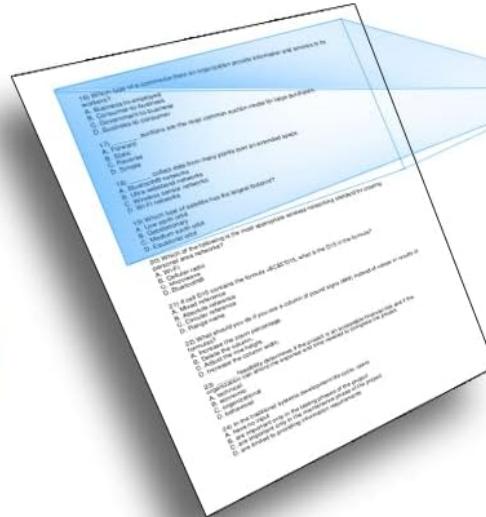


Image: PTT Icon for Communication

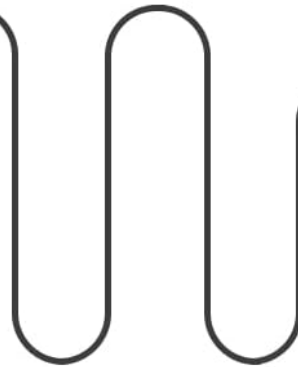


Two Way communication

WATCH VIDEO ON PHONE



Wireless
Micro
Ear Device



Exam Ready

Show and Listen (student)
Watch and Talk (friend)

Image: Two-Way Communication Diagram

Wireless transmit to the Ear device

Student with camera can listen friend speaking

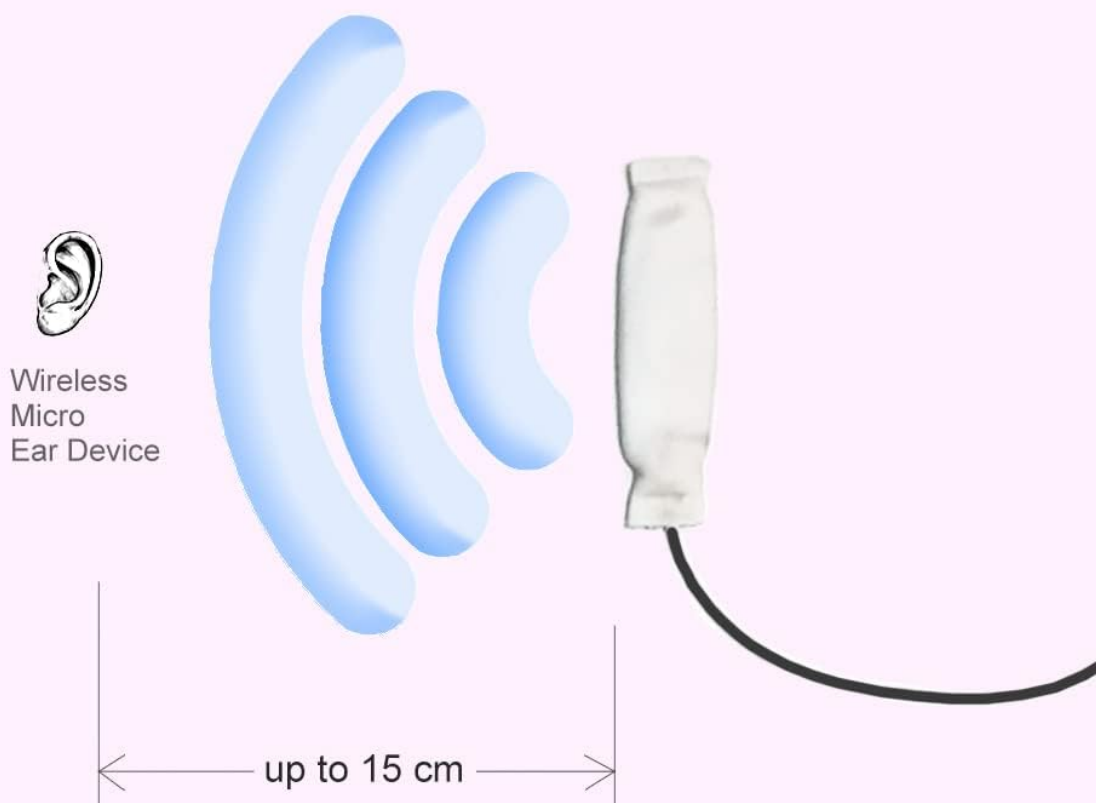


Image: Wireless Transmission to Earpiece Diagram

5.4 Focus Adjustment

The camera lens is initially focused for short distances. If the video appears unclear at your desired distance, gently rotate the lens clockwise by about half a turn until the image becomes clear.

5.5 Charging the Camera Module

Connect the camera module to a common USB charger (5V 1A or 2A) using the provided USB charging cable. The built-in 1300 mA Li-ion battery provides up to 5 hours of working time.

6. MAINTENANCE

To ensure the longevity and optimal performance of your device, follow these maintenance guidelines:

- Keep the camera module and earpiece clean and free from dust and moisture. Use a soft, dry cloth for cleaning.
- Store the device in a cool, dry place when not in use.
- Avoid exposing the device to extreme temperatures or direct sunlight.
- Ensure the battery is charged regularly, even if the device is not in frequent use, to maintain battery health.

7. TROUBLESHOOTING

Q: The video feed is unclear or blurry.

A: The camera lens is focused for short distances by default. Rotate the lens clockwise by about half a turn until the video becomes clear at your desired distance.

Q: What type of charger should I use?

A: Use a common USB charger with an output of 5V 1A or 2A.

Q: How do I attach the button covers to the lens?

A: Use a small amount of double-sided tape or glue. Be cautious, as glue may permanently fix the lens position and prevent focus adjustments.

Q: How do I power on the earpiece?

A: Insert the Type 337 battery into the earpiece. It will automatically activate.

8. SPECIFICATIONS

| | |
|------------------------------|----------------------------------------------|
| Video Resolution | 4K / 1080p / 720p |
| View Angle | 90 degrees |
| Battery | Rechargeable 1300 mA Li-ion |
| Battery Working Time | Up to 5 hours |
| Charging Input | USB 5V 1A or 2A |
| Memory Support | Micro SD card up to 128 GB (not included) |
| Connectivity | WiFi (Local AP mode up to 6m, P2P worldwide) |
| App Name | HDCameraPro |
| Camera Body Size | 8 x 4 cm |
| Lens Size | 12 x 0.8 cm |
| Induction Coil Length | 32 cm |
| Earpiece Battery | Type 337 |

9. OFFICIAL PRODUCT VIDEO

Your browser does not support the video tag.

Video: This video demonstrates the WiFi IP Camera with wireless earpiece and its two-way communication functionality, showing the camera, earpiece, and app interface in use.

10. IMPORTANT SAFETY INFORMATION

Please observe the following safety precautions:

- Do not attempt to disassemble or modify the device. This may void the warranty and cause damage.
- Keep the device away from water, fire, and high temperatures.
- Use only the specified charging voltage (5V) and current (1A or 2A).

- Keep out of reach of children.
- Dispose of batteries and electronic components responsibly according to local regulations.

11. WARRANTY AND SUPPORT

For warranty information and technical support, please refer to the seller's policies or contact the manufacturer directly. A digital user manual (PDF download link) is typically provided with the product for additional details.