

LENSGO TC7

LENSGO Portable Teleprompter TC7 User Manual

Model: TC7

1. INTRODUCTION

The LENS GO TC7 Portable Teleprompter is designed to assist content creators, educators, and presenters by displaying scrolling text directly in front of the camera lens. This allows for direct eye contact with the audience while reading a script, enhancing professionalism and reducing the need for memorization. The TC7 features high-definition beam splitter glass for clear text reflection and excellent light transmission, ensuring no compromise on image quality.

Its foldable design makes it highly portable, and it supports a wide range of devices including smartphones, tablets (up to 7.9 inches), and DSLR cameras. The teleprompter also includes multiple cold shoe mounts for attaching accessories like microphones and LED fill lights, providing a comprehensive solution for various recording scenarios.



Image 1.1: LENS GO TC7 Portable Teleprompter with included accessories.

2. WHAT'S IN THE BOX

Please verify that all components are present upon unboxing:

- Teleprompter (x1)
- Phone Clip (x1)
- Screws (x1)
- Remote Control (x1)
- Camera Adapter Rings (x9)
- Mobile Phone Shading Rings (x4)
- Instruction Manual (x1)
- Packing Box (x1)

WHAT'S IN THE BOX?



● TC7 TELEPROMPTER



Packing box x 1



Teleprompter x 1



Phone clip x 1



remote control x 1



Camera adapter ring
x 9



Mobile phone shading ring
x 4



Manual x 1



Twisted screws x 1

Image 2.1: All components included in the LENS GO TC7 package.

3. SETUP

3.1. Unfolding and Mounting

The TC7 teleprompter is designed for quick setup. It can be unfolded in approximately one second for immediate use. The base features a 1/4-inch screw hole for mounting onto various tripods, light stands, or desktop tripods.

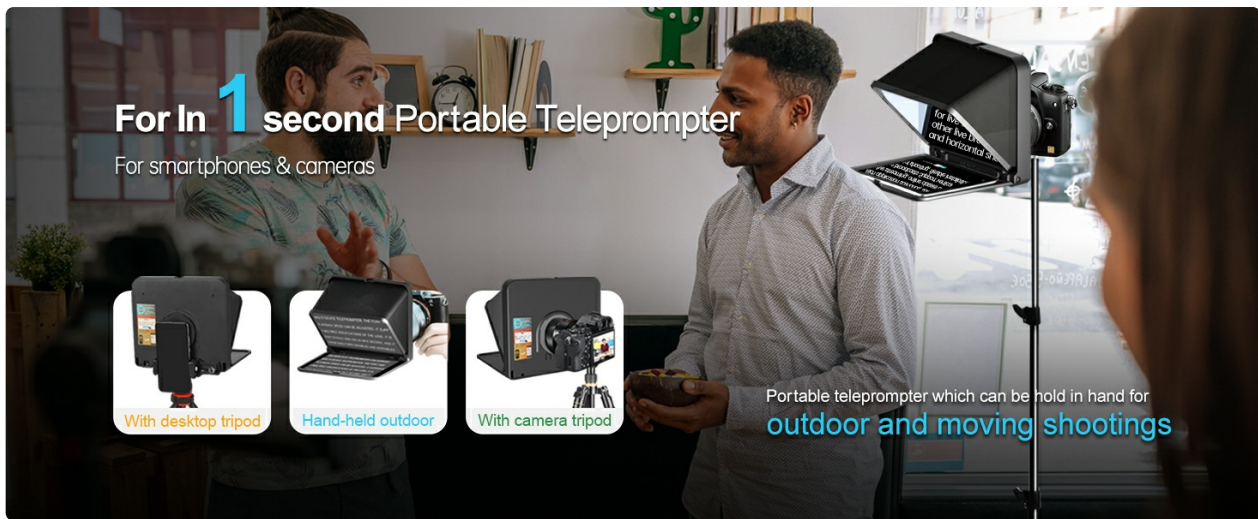


Image 3.1: Various mounting configurations for the teleprompter.

3.2. Camera Installation

1. Attach the appropriate lens adapter ring to your camera lens.
2. Screw the camera with the attached lens ring onto the teleprompter.
3. Place your tablet or smartphone onto the adhesive tape area for prompting.
4. Secure the teleprompter to a tripod for stable photography or videography.
5. To remove, take off the camera using a rotating method.
6. Slide the lens ring down to fully remove it.



Image 3.2: Camera installation steps.

3.3. Smartphone/Tablet Installation

The teleprompter supports both vertical and horizontal placement for smartphones and tablets (up to 7.9 inches).

Vertical Placement (Left Shooting)

1. Choose the fitted lens adapter ring and mobile phone shading ring.
2. Install the mobile phone shading ring into the teleprompter.
3. Screw in the phone holder to the teleprompter.
4. Find a suitable telephone lens hood to attach.
5. Clamp the phone in the phone holder.
6. Place the tablet/phone onto the adhesive tape for prompting.

Phone Vertical placement for left shooting

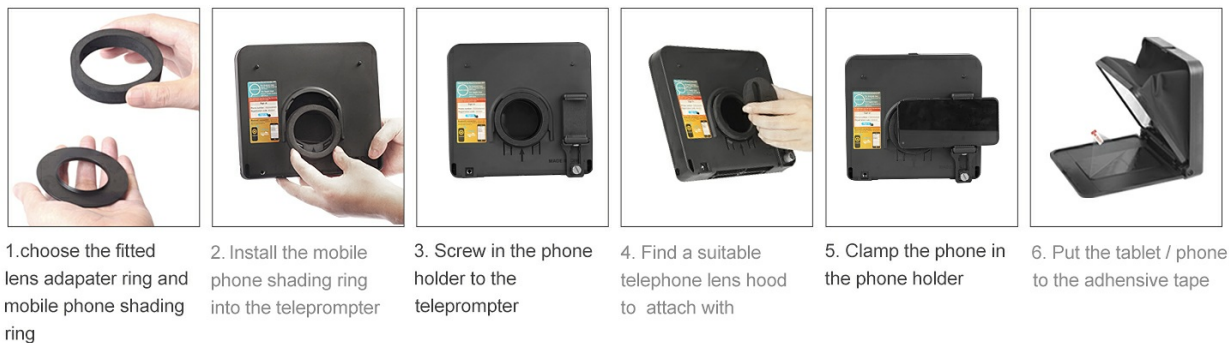


Image 3.3: Vertical smartphone setup.

Horizontal Placement (Right Shooting)

1. Choose the fitted lens adapter ring and mobile phone shading ring.
2. Install the mobile phone shading ring into the teleprompter.
3. Screw in the phone holder to the teleprompter.
4. Find a suitable telephone lens hood to attach.
5. Clamp the phone in the phone holder.
6. Place the tablet/phone onto the adhesive tape for prompting.

Phone horizontal placement for right shooting



Image 3.4: Horizontal smartphone setup.

3.4. App Installation

To use the teleprompter, download the free 'TCQI' application on your smartphone or tablet. This app is compatible with both iOS and Android systems.

- For iOS devices: Search for "TCQI" in the App Store.
- For Android devices: Search for "TCQI" in the Google Play Store, or download the APK directly from the official LENS GO website: [TCQI Android APK](#).

Ensure the app is updated to the latest version for optimal performance.

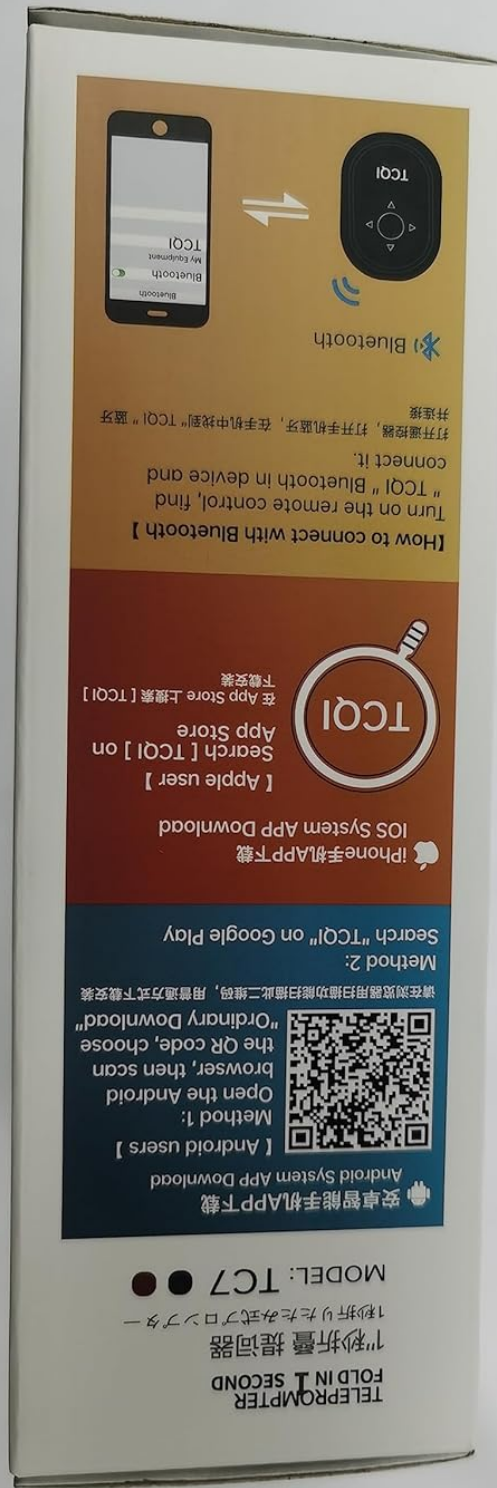


Image 3.5: App download instructions on product packaging.

4. OPERATING INSTRUCTIONS

4.1. Using the TCQI App

The TCQI app allows you to manage and display your scripts on the teleprompter. It offers several methods for adding content:

1. **Direct Input:** Type your script directly into the app or copy and paste text from another source.
2. **Text Document Upload:** Create your script in TXT format, save it to your mobile device, and then upload it through the app's interface.
3. **Image Display:** The app can display images, but this method is not recommended as text size cannot be adjusted, potentially affecting readability.

The app provides options to adjust font size, play speed, margins, line spacing, font color, and background color. You can also mirror the content for proper display on the teleprompter glass.

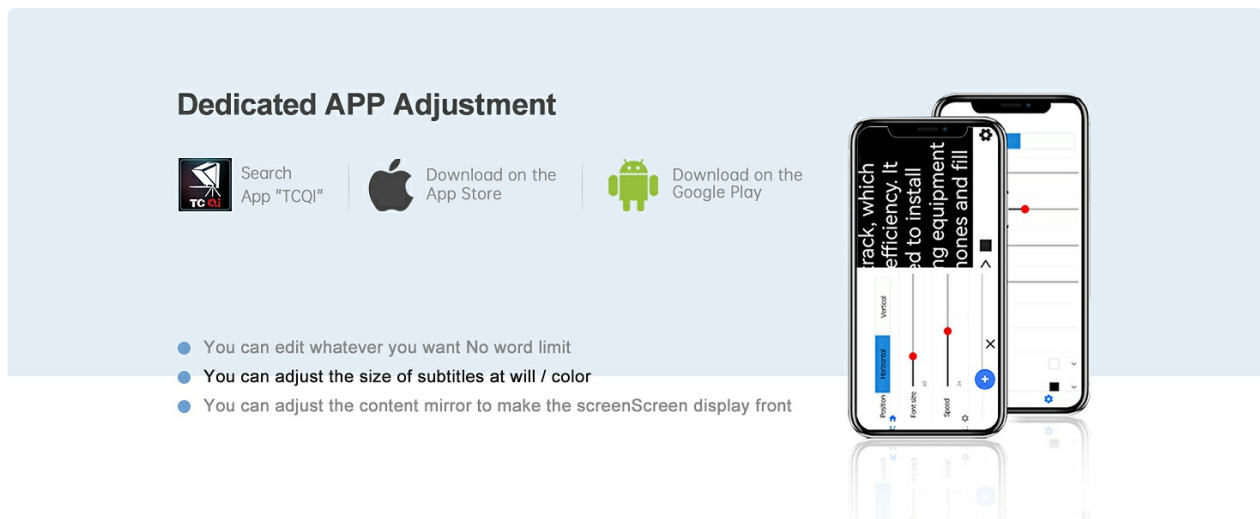


Image 4.1: TCQI App interface for script adjustment.

4.2. Remote Control Functionality

The included remote control connects via Bluetooth to your smartphone or tablet and allows for convenient operation of the TCQI app. With the remote, you can:

- Start and pause script scrolling.
- Increase or decrease scrolling speed.
- Turn pages (scroll up/down).
- Adjust font and background colors (within the app).

Remote control



Search App"TCQI"



Download on the
App Store



Download on the
Google Play



Bluetooth TCQI



Image 4.2: Remote control for app operation.

5. COMPATIBILITY

The LENS GO TC7 Teleprompter is designed for broad compatibility with various devices:

- **Smartphones:** Compatible with all models of smartphones.
- **Tablets:** Supports tablets up to 7.9 inches. Tablets larger than 7.9 inches are not compatible.
- **DSLR Cameras:** Compatible with most DSLR cameras, including Sony models. It comes with 8 camera lens adapter rings (49-82mm) to fit various lens sizes.
- **Operating Systems:** The TCQI app is compatible with both iOS and Android systems.

Compatibility:

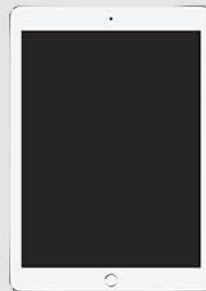
Compatible with any phone or tablet up to 7.9-inch

Nano double faced
adhesive tape

It is strong Adhesive and
water-proof, still works after
it is dry



✓ All models of mobile phones



✓ Tablet 7.9"



✗ Larger than 7.9"

Image 5.1: Device compatibility overview.

6. MAINTENANCE

To ensure the longevity and optimal performance of your LENS GO TC7 Teleprompter, follow these maintenance guidelines:

- **Cleaning the Glass:** Use a soft, lint-free microfiber cloth specifically designed for optics to clean the beam splitter glass. If necessary, use a small amount of lens cleaning solution. Avoid abrasive materials or harsh chemicals that could damage the special coating.
- **General Cleaning:** Wipe the exterior of the teleprompter with a soft, dry cloth. Do not use excessive moisture.
- **Storage:** When not in use, fold the teleprompter to its compact size and store it in a dry, dust-free environment, preferably in its original packing box or a protective case. Avoid extreme temperatures and direct sunlight.
- **Handling:** Handle the teleprompter with care to prevent drops or impacts, especially to the glass component.

7. TROUBLESHOOTING

If you encounter issues with your LENS GO TC7 Teleprompter, refer to the following common problems and solutions:

Problem	Possible Cause	Solution
Text is blurry or unclear on the glass.	Dirty glass; incorrect app settings.	Clean the beam splitter glass with a microfiber cloth. Ensure the app's font size and contrast settings are optimized.
Remote control not connecting or functioning.	Bluetooth not enabled; remote battery low; app not open.	Ensure Bluetooth is enabled on your device. Check remote battery. Confirm the TCQI app is open and active. Re-pair the remote if necessary.
Vignetting (dark corners) in camera footage.	Lens too wide; teleprompter not positioned correctly.	Ensure your camera lens is not wider than 17mm. Adjust the camera's position within the teleprompter to avoid obstruction.
App crashes or closes unexpectedly.	Outdated app version; software conflict.	Update the TCQI app to the latest version. Restart your mobile device. If issues persist, reinstall the app.
Tablet larger than 7.9 inches does not fit.	Product design limitation.	The TC7 is designed for tablets up to 7.9 inches. Larger tablets are not compatible with this model.

8. SPECIFICATIONS

- **Product Dimensions:** 8.27 x 7.87 x 1.89 inches
- **Item Weight:** 15.9 ounces
- **Model Number:** TC7-Black
- **Brand:** LENS GO
- **Focal Length Description:** 17 millimeters (minimum supported)
- **Lens Type:** Standard, Wide Angle
- **Compatible Mountings:** Sony (and other DSLR cameras with included adapter rings)
- **Camera Lens Adapter Rings:** Standard 49-82mm lens adapter rings included.
- **Tablet/Smartphone Compatibility:** Up to 7.9 inches.



Size Description

8.5-inch portable teleprompter



Easy to fold



Portable to carrying

Image 8.1: Product dimensions.

9. WARRANTY AND SUPPORT

LENSGO is committed to providing quality products and customer satisfaction. For support and warranty information, please refer to the following:

- **Quick Reply:** Customer inquiries are typically responded to within 24 hours.
- **Return Policy:** Enjoy a 60-day worry-free return period.
- **Replacement:** Replacements are available within 12 months of purchase.
- **Technical Support:** Lifetime after-sales consultation and technical support are provided.

For further assistance or to explore other LENS GO products, please visit the official LENS GO Store [LENS GO Store on Amazon](#).





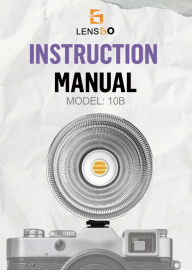
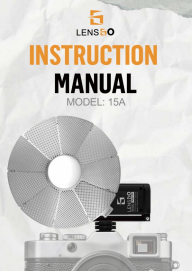

Image 9.1: LENS GO Customer Support Overview.

Related Documents - TC7



[Instrukcja Obsługi Generators Dymu Lensgo Smoke B](#)

Kompleksowa instrukcja obsługi generatora dymu Lensgo Smoke B, zawierająca kluczowe informacje dotyczące bezpieczeństwa, prawidłowego użytkowania i konserwacji urządzenia.

	<p>LENSGO Smoke S MINI Hand Held Fog Machine - Product Information and Safety Warnings</p> <p>Detailed information about the LENS GO Smoke S MINI Hand Held Fog Machine, including manufacturer details, EC representative, and important safety warnings for operation and use.</p>
	<p>LENSGO 348C Wireless Microphone System User Manual</p> <p>Comprehensive user manual for the LENS GO 348C 2.4G wireless microphone system, covering setup, operation, features, troubleshooting, and technical specifications for transmitters and receivers.</p>
	<p>LENSGO 10B Retro Light Instruction Manual</p> <p>Instruction manual for the LENS GO 10B Retro Light, detailing its features, operation, specifications, and safety precautions. Learn how to use this COB 5W camera light for photography.</p>
	<p>LENSGO 15A COB LED Light: Instruction Manual & Specifications</p> <p>Comprehensive instruction manual for the LENS GO 15A COB LED light. Learn about setup, operation, features, specifications, and safety precautions for this portable photography lighting solution.</p>
	<p>LensGo 40SHB COB LED Light User Manual</p> <p>User manual for the LensGo 40SHB COB LED light, detailing its features, specifications, operation, and maintenance. This portable light offers adjustable color temperature (2700K-7000K) and brightness (0%-100%), suitable for both camera and mobile phone use.</p>