

IKRA KSE 2400-40

IKRA KSE 2400-40 Electric Chainsaw

User Instruction Manual

1. IMPORTANT SAFETY INFORMATION

Before operating the IKRA KSE 2400-40 electric chainsaw, it is crucial to read and understand all safety warnings, instructions, illustrations, and specifications provided in this manual. Failure to follow all instructions listed below may result in electric shock, fire, and/or serious injury. Keep all warnings and instructions for future reference.

- Always wear appropriate personal protective equipment (PPE), including safety glasses, hearing protection, gloves, and sturdy footwear.
- Ensure the work area is clear of obstacles, bystanders, and pets.
- Do not operate the chainsaw in wet conditions or in the presence of flammable liquids or gases.
- Always hold the chainsaw firmly with both hands during operation.
- Disconnect the chainsaw from the power supply before performing any maintenance, cleaning, or when not in use.

2. PRODUCT OVERVIEW

The IKRA KSE 2400-40 is a powerful and efficient electric chainsaw designed for various wood cutting tasks. Manufactured in Europe, it features a robust 2400 Watt motor and an Oregon anti-vibration chain for optimal performance.



Image: The IKRA KSE 2400-40 electric chainsaw, shown with its guide bar and chain, alongside two additional replacement chains. The power cord and plug are visible, indicating its electric nature.

Key Features:

- **High Performance:** 2400 Watt motor with a chain speed of 12 m/s.
- **Oregon Quality:** Equipped with an Oregon anti-vibration chain and sprocket nose bar, providing a 40 cm cutting length. Includes two replacement chains.
- **User Comfort:** Ergonomic handle with 'Soft Grip' for comfortable handling, reinforced professional metal gears for durability, and high torque for efficient cutting with minimal effort.
- **Easy Handling:** Tool-free chain mounting and tensioning system.
- **Automatic Lubrication:** Features automatic chain lubrication with a visible oil level indicator to ensure consistent oiling.

3. SETUP AND ASSEMBLY

The IKRA KSE 2400-40 chainsaw is designed for straightforward assembly. Follow these steps to prepare your chainsaw for use:

3.1 Unpacking

Carefully remove all components from the packaging. Verify that all parts listed in the 'Components Included' section of this manual are present and undamaged. Retain packaging materials for potential future storage or transport.

3.2 Bar and Chain Installation

1. Ensure the chainsaw is unplugged from the power source.
2. Locate the chain cover and loosen the retaining knob. The tool-free design allows for easy removal.
3. Carefully place the chain around the sprocket and guide bar, ensuring the cutting edges are facing the correct direction (refer to the chain direction arrow on the chainsaw body).
4. Align the guide bar with the mounting studs and slide it into position.
5. Replace the chain cover and hand-tighten the retaining knob.
6. Adjust the chain tension using the integrated tensioning dial. The chain should be snug but still able to be pulled freely around the guide bar by hand. Ensure there is no excessive slack.

3.3 Chain Lubrication

The chainsaw features an automatic chain lubrication system. Before first use and periodically during operation, ensure the oil reservoir is filled with appropriate chain oil.



Image: A close-up view of the IKRA KSE 2400-40 electric chainsaw, highlighting the transparent oil level indicator window on the side of the unit. This allows users to easily monitor the chain oil level.

1. Locate the oil filler cap on the top of the chainsaw body.
2. Unscrew the cap and fill the reservoir with high-quality chain and bar oil. Do not overfill.
3. Replace the cap securely.
4. Regularly check the oil level using the transparent oil level indicator window during operation. Refill as needed.

4. OPERATING INSTRUCTIONS

Proper operation of the IKRA KSE 2400-40 chainsaw ensures safety and efficiency. Always prioritize safety and follow these guidelines:

4.1 Pre-Operation Checks

- Verify that the chain is properly tensioned and lubricated.
- Inspect the power cord for any damage or cuts.
- Ensure all handles and guards are securely in place.
- Confirm the work area is clear and stable.

4.2 Starting and Stopping

1. Connect the chainsaw to a suitable power outlet (230 Volts).
2. To start, firmly grasp the front and rear handles. Depress the safety lock-off button (if present) and then squeeze the trigger switch.
3. To stop, release the trigger switch. The chain will stop immediately.

4.3 Cutting Techniques

The ergonomic design and soft grip handle facilitate both vertical and horizontal cutting. Always maintain a stable stance and control of the chainsaw.



Image: A person wearing protective gloves and clothing is operating the IKRA KSE 2400-40 electric chainsaw to cut through a large log, demonstrating the tool's cutting action and the resulting sawdust.

- **Felling:** For felling small trees, plan your escape route and make appropriate cuts (notch and felling cut).
- **Limbing:** Remove branches from a felled tree. Work from the base towards the top, cutting smaller branches first.

- **Bucking:** Cut a felled log into smaller sections. Ensure the log is stable and supported to prevent pinching the bar.
- Avoid cutting into the ground, as this will dull the chain quickly.

5. MAINTENANCE

Regular maintenance ensures the longevity and safe operation of your IKRA KSE 2400-40 chainsaw. Always disconnect the power before performing any maintenance.

5.1 Chain Sharpening

A sharp chain is essential for efficient and safe cutting. When the chain starts to produce fine sawdust instead of chips, or requires excessive force to cut, it needs sharpening. Refer to a specialized guide or professional service for proper chain sharpening techniques.

5.2 Guide Bar Maintenance

Periodically clean the guide bar groove to remove sawdust and debris. Flip the guide bar regularly to ensure even wear on both sides.

5.3 Cleaning the Chainsaw

After each use, clean the chainsaw body, guide bar, and chain. Use a brush or compressed air to remove sawdust and wood chips. Do not use water or solvents that could damage electrical components.

5.4 Storage

Store the chainsaw in a dry, secure location, out of reach of children. Ensure the chain is lubricated before storage to prevent rust. Use the chain guard to cover the bar and chain.

6. TROUBLESHOOTING

This section addresses common issues you might encounter with your IKRA KSE 2400-40 chainsaw.

Problem	Possible Cause	Solution
Chainsaw does not start.	No power supply; safety switch not engaged; damaged cord.	Check power connection; ensure safety switch is pressed before trigger; inspect and replace damaged cord.
Chain does not move.	Chain brake engaged; chain too tight; debris in sprocket area.	Disengage chain brake; adjust chain tension; clean sprocket area.
Poor cutting performance.	Dull chain; incorrect chain tension; insufficient lubrication.	Sharpen or replace chain; adjust chain tension; refill oil reservoir.
Excessive smoke or burning smell.	Motor overload; insufficient chain lubrication.	Reduce cutting pressure; ensure oil reservoir is full and automatic lubrication is working. Discontinue use if problem persists and seek professional service.

7. SPECIFICATIONS

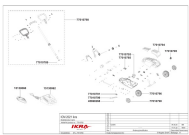

Specification	Value
Model Number	23514120-AZ2
Power	2400 Watts
Voltage	230 Volts
Chain Speed	12 m/s
Guide Bar Length	40 cm (400 mm)
Weight	4.9 Kilograms
Dimensions (L x W x H)	81 x 26 x 22 cm
Noise Level	104 dB
Components Included	1x Chainsaw, 1x User Manual, 2x Replacement Anti-Vibration Chains

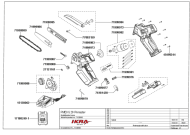
8. WARRANTY AND SUPPORT

The IKRA KSE 2400-40 electric chainsaw comes with a **3-year manufacturer's warranty**, ensuring quality and reliability. This warranty covers defects in materials and workmanship under normal use. For warranty claims, technical support, or spare parts inquiries, please contact IKRA customer service through their official website or the retailer where the product was purchased. Please have your model number (KSE 2400-40) and proof of purchase ready when contacting support.

© 2025 IKRA. All rights reserved.

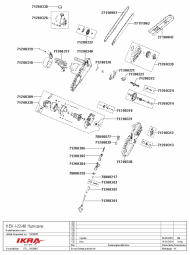
Related Documents - KSE 2400-40

	<p>IKRA ICM 2021 ikra Parts List and Exploded View Diagram</p> <p>Detailed exploded view diagram and parts list for the IKRA ICM 2021 ikra garden tool, including part numbers, product information, and revision history.</p>
	<p>IKRA PMAFS 40 Cordless Brush Cutter - User Manual and Safety Guide</p> <p>Comprehensive user manual for the IKRA PMAFS 40 cordless brush cutter, detailing technical specifications, safety instructions, assembly, operation, maintenance, disposal, and warranty information. Includes guidance on safe usage and product care.</p>



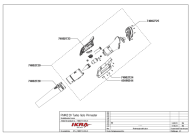
[IKRA PMEKS 20 Primaster Exploded View Diagram and Parts List](#)

Detailed exploded view diagram and parts list for the IKRA PMEKS 20 Primaster garden tool. Includes all part numbers and essential document information for maintenance and repair.



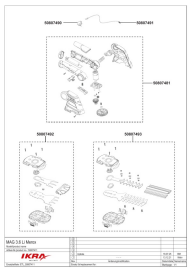
[IKRA HEK-I-22/40 Hurricane Chainsaw Parts Diagram](#)

Exploded view parts diagram and list for the IKRA HEK-I-22/40 Hurricane chainsaw, including part numbers and revision history.



[IKRA PMAB 20 Turbo Solo Primaster Parts List and Diagram](#)

Detailed parts list and exploded view diagram for the IKRA PMAB 20 Turbo Solo Primaster, including part numbers, product information, and revision history.



[IKRA MAG 3.6 Li Merox Hedge Trimmer Parts List & Diagrams \(Model 50807411\)](#)

Detailed exploded view diagrams and parts list for the IKRA MAG 3.6 Li Merox hedge trimmer, model number 50807411. Identify and order replacement parts for your IKRA garden tool.