

Manuals+

[Q & A](#) | [Deep Search](#) | [Upload](#)

[manuals.plus](#) /

› [Tangkula](#) /

› [Tangkula 7 Piece Patio Furniture Set Instruction Manual](#)

Tangkula patio-conversation-sets-70659

Tangkula 7 Piece Patio Furniture Set Instruction Manual

Model: patio-conversation-sets-70659

INTRODUCTION

Welcome to your new Tangkula 7 Piece Patio Furniture Set. This manual provides detailed instructions for assembly, operation, maintenance, and troubleshooting to ensure optimal use and longevity of your outdoor furniture. Please read this manual thoroughly before assembly and use.



A complete view of the Tangkula 7 Piece Patio Furniture Set, featuring a black wicker sectional sofa with black cushions, a coffee table, and decorative pillows, arranged on an outdoor patio with an umbrella and pool in the background.

PRODUCT OVERVIEW

The Tangkula 7 Piece Patio Furniture Set is designed for outdoor use, offering a flexible combination of seating and a coffee table. It includes four armless sofas, two corner sofas, and one coffee table, providing ample space for relaxation and social gatherings.



An overhead view of the Tangkula 7 Piece Patio Furniture Set with bright blue cushions, showcasing its arrangement around a coffee table, set against a poolside background.

SETUP AND ASSEMBLY

This patio sofa set is designed for straightforward assembly with clear instructions and numbered parts. Please ensure you have enough space and all tools required before beginning.

Unpacking

- Carefully unpack all components from the packaging.
- Verify that all parts listed in the packing list are present. The complete set may arrive in 3 separate boxes, which might be delivered on different dates.
- Inspect all parts for any damage. Contact customer support immediately if any parts are missing or damaged.

Assembly Steps

1. Identify the armless sofas, corner sofas, and coffee table components.
2. Follow the provided clear instruction manual for step-by-step assembly.
3. Use the numbered parts to ensure correct connections.
4. Secure sofa sections together using the 10 clips provided to prevent sliding and maintain arrangement.
5. Place the tempered glass top onto the coffee table, ensuring it is fixed by the 5 powerful suckers for stability.



An image illustrating the package delivery, showing the 7-piece patio furniture set with blue cushions and a coffee table on a lawn, with icons indicating that the accessories come in 3 boxes.

OPERATING INSTRUCTIONS

Flexible Combination

The modular design allows for flexible arrangement of the four armless sofas, two corner sofas, and coffee table to suit your outdoor space and specific needs. Experiment with different layouts to create your ideal conversation area.

Comfort Features

The set includes thick seat cushions, backrest cushions, and two pillows for enhanced comfort. The seat cushions feature water-proof and washable covers with built-in smooth zippers for easy removal and cleaning.



**Hand-woven
Wicker**

**Rugged
Steel Structure**

**L-shaped
Aluminum Feet**

A detailed image highlighting the hand-woven wicker, rugged steel structure, and L-shaped aluminum feet of the patio furniture, emphasizing its construction quality.



1

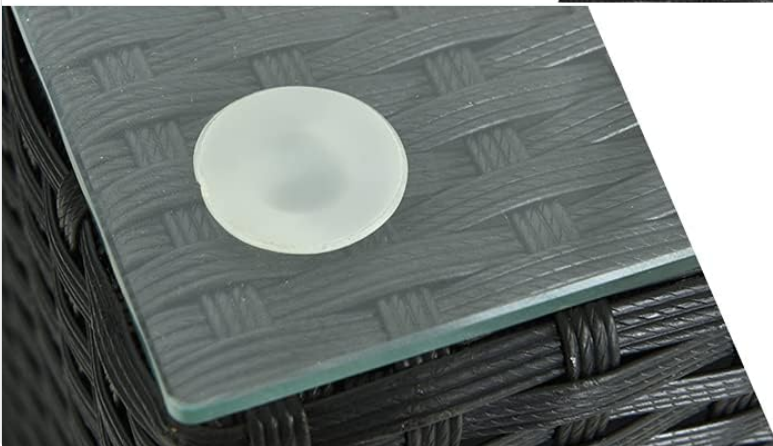
Wide Armrest

Provide plenty of room for your arms

2

Comfortable Experience

Seat cushions, back cushions and pillows are included



3

Tempered Glass Table Top

Fixing by 5 powerful suckers

An image showcasing three key features: a wide armrest for comfort, thick seat and back cushions, and a tempered glass coffee table top secured by suckers.

Official seller video demonstrating the Tangkula 7 Piece Patio Furniture Set in an outdoor setting, highlighting its comfortable cushions, weather-resistant rattan, large coffee table, and spacious design for relaxation and social gatherings.

MAINTENANCE AND CARE

Cleaning

- The PE rattan frame is easy to clean. Wipe with a damp cloth and mild soap. Avoid harsh chemicals that may damage the material.
- The seat cushion covers are washable. Unzip and remove covers for cleaning. Follow care instructions on the label for best results.
- The tempered glass tabletop can be cleaned with standard glass cleaner and a soft cloth.

Protection

- For long-term use and to protect against harsh weather conditions, it is recommended to use a protective cover on the rattan set, especially during rain, snow, or intense sun exposure.
- Store cushions indoors during prolonged periods of non-use or inclement weather to preserve their quality and appearance.



The Tangkula 7 Piece Patio Furniture Set with black cushions and a coffee table, positioned on a wooden deck in an outdoor setting, demonstrating its aesthetic appeal.

TROUBLESHOOTING

Common Issues and Solutions

- **Issue:** Missing or damaged parts upon delivery.
- **Solution:** Immediately contact Tangkula customer support with your order details for assistance. Do not attempt to assemble with missing parts.
- **Issue:** Difficulty with assembly or parts not aligning correctly.

- **Solution:** Double-check the instruction manual and ensure all parts are correctly oriented. Do not overtighten screws until all components are loosely fitted. If issues persist, disassemble and re-examine the steps. Contact customer support if necessary.
- **Issue:** Wicker unraveling or appearing damaged.
- **Solution:** For minor unraveling, a strong, weather-resistant adhesive may temporarily secure it. For significant damage, contact customer support for potential replacement parts or solutions.
- **Issue:** Cushions appear thin or uncomfortable.
- **Solution:** While cushions are designed for comfort, individual preferences vary. Consider adding additional decorative pillows or throw blankets for extra support and comfort.
- **Issue:** Furniture appears low to the ground.
- **Solution:** This is part of the design specification for this model. Ensure the L-shaped aluminum feet are correctly installed and fully seated.

SPECIFICATIONS

Detailed product dimensions and materials for your Tangkula 7 Piece Patio Furniture Set.

Feature	Detail
Rattan Color	Black
Material	PE Wicker, Steel, Sponge, Tempered Glass
Corner Sofa Size	29" x 29" x 24" (L x W x H)
Armless Sofa Size	29" x 25.5" x 24" (L x W x H)
Coffee Table Size	29" x 29" x 12.5" (L x W x H)
Cushion Size	24.5" x 24" x 3" (L x W x H)
Weight Capacity (Corner Sofa)	400 lbs
Weight Capacity (Armless Sofa)	400 lbs
Weight Capacity (Coffee Table)	170 lbs
Item Weight (Total)	137.6 pounds
Overall Product Dimensions	29 x 29 x 24 inches
Assembly Required	Yes

— SPECIFICATIONS —

Rattan Color	Black	Cushion Size	24.5" x 24" x 3" (L x W x H)
Material	PE Rattan, Steel, Tempered Glass, Sponge	Weight Capacity of Corner Sofa	400 lbs
Corner Sofa Size	29" x 29" x 24" (L x W x H)	Weight Capacity of Armless Sofa	400 lbs
Armless Sofa Size	29" x 25.5" x 24" (L x W x H)	Weight Capacity of Coffee Table	170 lbs
Coffee Table Size	29" x 29" x 12.5" (L x W x H)	Note	You'd better put a protective cover on the rattan set for long-term use when it rains.

A graphic displaying the detailed specifications of the Tangkula 7 Piece Patio Furniture Set, including rattan color, materials, dimensions for corner sofa, armless sofa, and coffee table, cushion size, and weight capacities.

WARRANTY AND SUPPORT

For warranty information, product support, or to report missing or damaged parts, please contact Tangkula customer service directly. Refer to your purchase documentation for specific contact details and warranty terms. You can also visit the official Tangkula store on Amazon for more information:[Tangkula Store](#).