

DOUXURY D-7DVR-CA

DOUXURY RV Backup Camera System User Manual

Model: D-7DVR-CA

1. SYSTEM OVERVIEW

The DOUXURY RV Backup Camera System provides enhanced visibility for large vehicles, including RVs, trucks, trailers, semi-trucks, campers, and buses. This system features a 7-inch 1080P quad-split monitor, four AHD cameras, and a built-in DVR for recording. It is designed to assist drivers in maneuvering and parking by eliminating blind spots.

- **Flexible Vehicle Compatibility:** Operates with a 12-24V DC power supply, suitable for a wide range of large vehicles.
- **Built-in DVR Recording Function:** The 7-inch LCD monitor includes DVR functionality, supporting local playback and continuous loop recording.
- **4 Split 1080P Monitor:** Supports quad-view display, allowing simultaneous viewing of up to four camera feeds.
- **IP69 Waterproof Level:** Cameras are designed with excellent sealing technology for reliable operation in various weather conditions, withstanding temperatures from -4°F to 149°F.
- **Wired Installation:** Ensures a stable signal without interference.
- **Night Vision & Wide View Angle:** Equipped with infrared LED lights for clear night vision and a 170-degree wide viewing angle to reduce blind spots.



Figure 1.1: The DOUXURY RV Backup Camera System, including the 7-inch monitor and four AHD cameras.

IP69 WATERPROOF LEVEL IR LED NIGHT VISION



Figure 1.2: The system is compatible with various large vehicles such as RVs, trucks, and buses.

2. PRODUCT COMPONENTS

The following items are included in your DOUXURY RV Backup Camera System package:

- 1 x 7 Inch LCD Monitor
- 2 x Rear & Front View Cameras
- 2 x Side View Cameras
- 2 x 33ft AV Cable
- 1 x 16ft AV Cable
- 1 x Remote Control
- 1 x 32GB TF Card
- 1 x Power Cable
- 1 x User Manual (this document)

 <p>7 Inch LCD Monitor</p>	 <p>Rear view camera x 2</p>	<p>DOUXURY</p>  <p>Side View Camera x 2</p>
 <p>66ft AV Cable</p>	 <p>32g TF Card</p>	 <p>Remote Control</p>
 <p>33ft AV Cable x 2</p>	 <p>16ft AV Cable</p>	 <p>User Manual</p> <p>Power Cable</p>

Figure 2.1: All components included in the product package.

3. INSTALLATION GUIDE

This section provides general guidelines for installing your DOUXURY RV Backup Camera System. Professional installation is recommended for optimal performance and safety.

3.1 Wiring Diagram

The system uses a wired connection for stable signal transmission. Ensure all cables are securely connected as per the diagram below. The power cable supports the entire system, and cameras connect to the monitor via extension cables.

1080P BACKUP CAMERA SYSTEM WITH DVR FOR ALL VEHICLE



Figure 3.1: Detailed wiring connections for the monitor and four cameras. The red wire is for DC 12-24V power supply, black for ground, and colored wires (grey, blue, green) are triggers for CH4, CH3, and CH2 respectively.

3.2 Component Dimensions

Refer to the dimensions below for planning the placement of the monitor and cameras on your vehicle.

HOW TO INSTALL

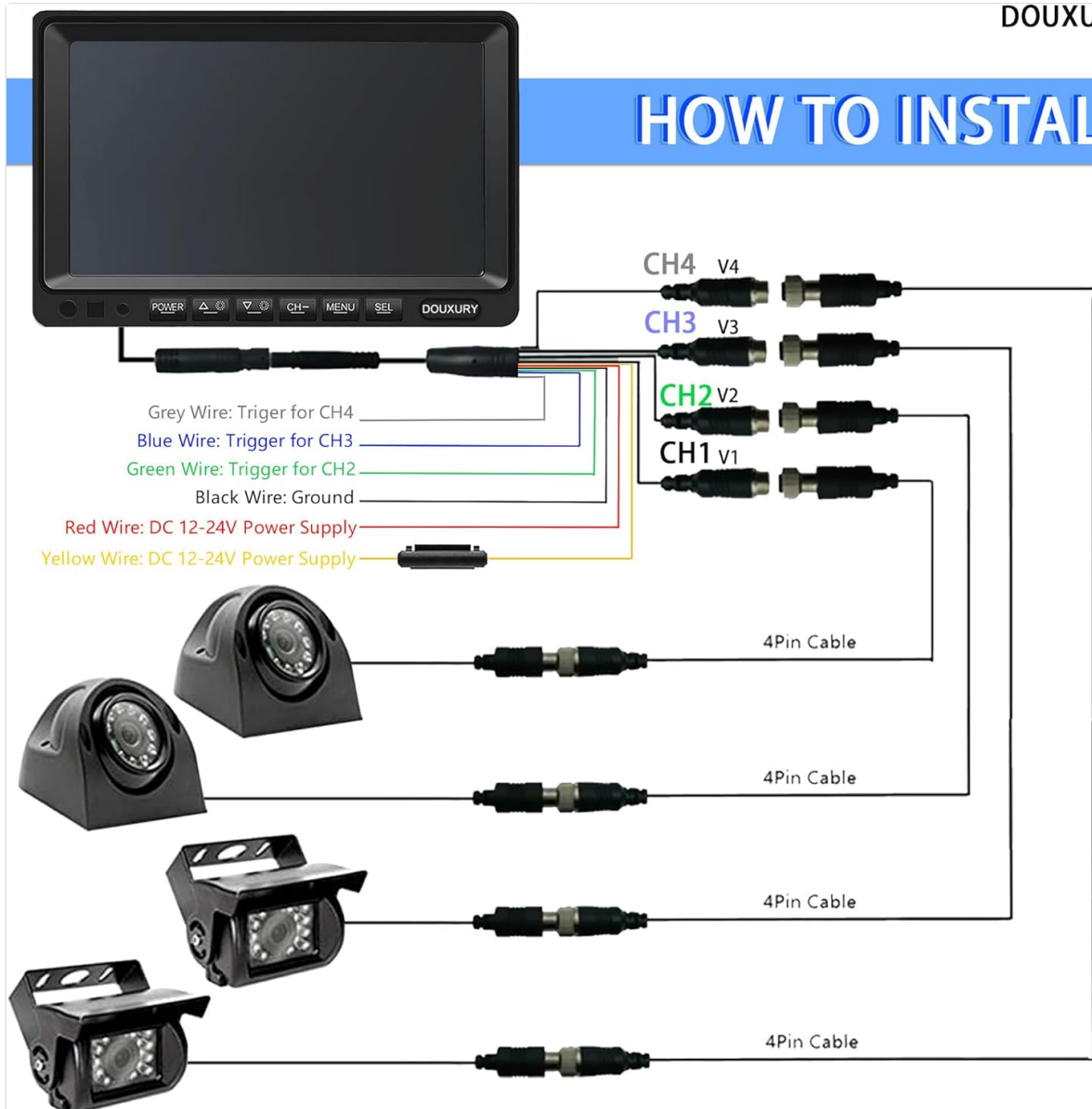


Figure 3.2: Physical dimensions of the 7-inch LCD monitor, rear/front view camera, and side view camera.

3.3 Camera Placement

Strategically position the two rear/front view cameras and two side view cameras to maximize coverage and minimize blind spots. Ensure cameras are securely mounted and cables are routed safely, away from moving parts or heat sources.

7 INCH 1080P 360° SECURITY

DOUXURY



Figure 3.3: Recommended camera placement for front/rear (170° view) and side (130° view) cameras to achieve comprehensive coverage.

4. OPERATING INSTRUCTIONS

This section details how to operate your DOUXURY RV Backup Camera System.

4.1 Monitor Functions

The 7-inch LCD monitor provides various display modes and features:

- **Quad Split Screen:** View feeds from all four cameras simultaneously.
- **Single Camera View:** Switch to a full-screen view of any individual camera.
- **DVR Recording:** The monitor records footage to the inserted TF card.
- **Local Playback:** Review recorded videos directly on the monitor.
- **Loop Recording:** The system automatically overwrites the oldest files when the TF card is full.
- **Image Flip:** Adjust camera image orientation as needed.
- **Parking Assist Lines:** Enable or disable on-screen guidelines for parking assistance.

1080P HD BACKUP CAMERA SYSTEM

Big screen, high pixel - Good visual experience



Figure 4.1: The 7-inch monitor interface highlighting key features such as 4-split screen, video recording, assist lines, and image flip.

4.2 DVR Recording and Playback

The integrated DVR function allows continuous recording of camera feeds. Ensure a TF card is inserted into the monitor. Recorded files can be accessed and played back directly from the monitor's menu.



Figure 4.2: The monitor supports loop recording and allows for local playback of recorded video segments.

4.3 Night Vision

The cameras are equipped with infrared LED lights, providing clear visibility in low-light conditions and at night. The system automatically switches to night vision mode when ambient light is insufficient.

5. MAINTENANCE

Proper maintenance ensures the longevity and optimal performance of your camera system.

5.1 Camera Care

The cameras feature an IP69 waterproof rating, making them resistant to dust and high-pressure water jets. They are designed to withstand extreme temperatures from -4°F to 149°F.

LOOP RECORDING + LOCAL PLAY



Figure 5.1: Cameras are IP69 waterproof and feature IR LED night vision for reliable performance in various conditions.

Regularly clean the camera lenses with a soft, damp cloth to ensure clear image quality. Avoid using abrasive cleaners or solvents.

5.2 Monitor Care

Clean the monitor screen with a soft, lint-free cloth. Do not spray cleaning solutions directly onto the screen. Protect the monitor from direct prolonged sunlight exposure, especially in high-temperature environments.

6. TROUBLESHOOTING

If you encounter issues with your system, refer to the following common troubleshooting steps:

- **No Power to Monitor:** Check all power connections. Ensure the 12-24V DC power supply is correctly connected and functional. Verify the power cable is not damaged.
- **No Camera Signal:** Ensure all camera cables are securely connected to the monitor. Check for any damage to the extension cables. If a specific camera is not displaying, try swapping its connection with a working camera to isolate the issue.
- **Poor Image Quality:** Clean camera lenses. Ensure connections are secure. Verify the monitor settings for brightness and contrast.

- **DVR Not Recording:** Ensure a compatible TF card is properly inserted. Check if the TF card is full; if so, the loop recording function should overwrite old files, but a faulty card might prevent this. Format the TF card via the monitor's menu if issues persist.
- **Intermittent Signal:** While wired systems are generally stable, check for loose connections or damaged cables, especially along the vehicle's exterior.

If these steps do not resolve the issue, please contact customer support for further assistance.


7. SPECIFICATIONS





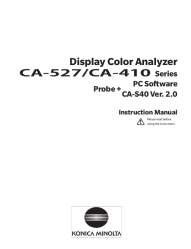
Feature	Specification
Model Number	D-7DVR-CA
Monitor Screen Size	7 Inches
Display Technology	LCD
Video Resolution	1080P (AHD Cameras)
Camera View Angle	170 Degrees (Rear/Front), 130 Degrees (Side)
Waterproof Rating	IP69
Operating Voltage	12-24 Volts DC
Special Features	DVR Recording, Quad Split Display, Night Vision, Parking Assist Lines
Item Weight	2 pounds (System)
Product Dimensions (Monitor)	7"L x 1"W x 5"H

8. WARRANTY AND SUPPORT

DOUXURY provides a 365-day replacement warranty for this product. For warranty claims, technical support, or any questions regarding your RV Backup Camera System, please contact DOUXURY customer service through the platform where you purchased the product or refer to the contact information provided in your product packaging.

Related Documents - D-7DVR-CA

	<p>Starvis Dual Dash Camera 1080P WGV-030-D User Manual</p> <p>Comprehensive user manual for the Starvis Dual Dash Camera 1080P (WGV-030-D) with Super Night Vision. Covers package contents, features, specifications, operating instructions, mobile app connectivity, and FCC compliance.</p>
---	--

	<p>Night Owl 2-Way Audio Recorder User's Manual</p> <p>Comprehensive user manual for the Night Owl 2-Way Audio Recorder, covering initial setup, system configuration, camera installation, and remote access features. Includes detailed instructions for Bluetooth® Wireless Setup and system requirements.</p>
	<p>Night Owl 2-Way Audio Recorder User's Manual - Setup, Configuration, and Operation Guide</p> <p>Comprehensive user manual for Night Owl 2-Way Audio Recorder systems. Covers initial setup, hardware connection, app configuration, camera installation, system settings, playback, and troubleshooting for FTD2, FTD4, and FTD8 series.</p>
	<p>Ashly CA Series Power Amplifiers: High-Efficiency D-MAX Class D Technology</p> <p>Explore the Ashly CA Series of power amplifiers, featuring D-MAX Class D technology, Dynamic Power Factor Correction, and SailFlow cooling for superior efficiency, sound quality, and reliability. Details on models CA-502, CA-1.02, CA-1.52, CA-504, CA-1.04, and CA-1.54.</p>
	<p>DIGITALas D-EyE 4x1 Professional Body-Worn Video Recorder Technical Specifications</p> <p>Detailed technical specifications, features, functionality, operation visualization, and package contents for the DIGITALas D-EyE 4x1 professional body-worn video recorder, designed for law enforcement and security personnel.</p>
	<p>Konica Minolta CA-527/CA-410 Series Display Color Analyzer & CA-S40 Software Instruction Manual</p> <p>This instruction manual provides detailed information on the Konica Minolta CA-527 Display Color Analyzer, CA-410 Series probes, and the CA-S40 PC software for measuring display luminance, chromaticity, and flicker.</p>