

[Manuals.plus](#) /

› [fehrominger](#) /

› fehrominger Portable Airbrush Kit User Manual

fehrominger Airbrush Set

fehrominger Portable Airbrush Kit User Manual

Model: Airbrush Set (B098WT1DGC)

INTRODUCTION

This manual provides comprehensive instructions for the fehrominger Portable Airbrush Kit, a versatile and cordless tool designed for a wide range of applications. This kit is ideal for detailed work in nail art, painting, cake decorating, makeup application, model painting, and various crafts. Please read this manual thoroughly before operating the device to ensure safe and efficient use.

IMPORTANT SAFETY INFORMATION

- Always operate the airbrush in a well-ventilated area to avoid inhaling paint fumes.
- Wear appropriate personal protective equipment, such as safety glasses and gloves, especially when working with paints or chemicals.
- Keep the device away from children and pets.
- Do not immerse the compressor unit in water or any other liquid.
- Ensure the airbrush and compressor are clean and dry before storage.
- Use only recommended and properly diluted liquids with the airbrush.
- Do not block the air outlet during operation.

PACKAGE CONTENTS

Your fehrominger Portable Airbrush Kit includes the following components:

- 1 x Cordless Airbrush Gun
- 1 x Portable Air Compressor
- 3 x Paint Cups (10CC, 20CC, 40CC capacities)
- 5 x Cleaning Brushes
- 1 x USB Charging Cable
- 1 x Dropper



Image: All components of the fehrominger Portable Airbrush Kit, including the main airbrush unit, various paint cups, cleaning tools, and charging accessories.

SETUP GUIDE

1. **Charge the Compressor:** Before first use, fully charge the portable compressor using the provided USB charging cable. Connect it to a compatible USB power source (e.g., power bank, adapter, laptop). The indicator light will show charging status.



Connect the compressor with the airbrush.



Pour the paint/liquid to be sprayed into the cup on the airbrush pen.

Simple to Use



Press the adjustable switch on the machine body to start the compressor. Only air goes out.



Pull the trigger backward slowly and the paint / liquid will be sprayed out.

Image: The airbrush compressor unit being charged using a USB cable, demonstrating compatibility with laptops, wall adapters, and power banks.

2. **Assemble the Airbrush:** Screw the airbrush gun onto the top of the compressor unit until it is securely attached.

High-pressure Airbrush with 3 Gears



Image: A visual guide demonstrating how to connect the airbrush gun to the compressor unit.

3. **Dilute Your Material:** All paints, inks, or liquids must be properly diluted to a milk-like consistency (approximately 0.027 ppm) to ensure smooth flow and prevent clogging. Test with clean water first to check for blockages. For makeup, dilute liquid foundation with a few drops of toner.
4. **Fill the Paint Cup:** Choose one of the provided paint cups (10CC, 20CC, or 40CC) and screw it onto the airbrush gun. Carefully pour your diluted material into the fluid cup.

Adjustable Air Pressures

Easier to operate to get perfect patterns



Image: Illustrates the process of pouring the prepared liquid or paint into the airbrush's fluid cup.

OPERATING INSTRUCTIONS

The fehrominger Airbrush Kit offers precise control for various artistic and practical applications.



Image: Labeled diagram highlighting key parts of the airbrush kit, including the fluid cup, trigger, nozzle, and compressor controls.

1. **Power On and Adjust Air Pressure:** Press the ON/OFF button on the compressor unit to turn it on. Repeatedly press the button to cycle through the three available air pressure settings:
 - **30 PSI:** Highest pressure, suitable for heavier coatings and larger areas.
 - **25 PSI:** Medium pressure, good for general applications.
 - **18 PSI:** Lowest pressure, ideal for fine details and delicate work.



Image: Visual representation of the three adjustable air pressure levels (30 PSI, 25 PSI, 18 PSI) and their effect on the spray output.

- Control Paint Flow:** Once the desired air pressure is set, gently pull the trigger backward to release the paint. The further you pull the trigger, the more paint will be released. This dual-action control allows for precise adjustment of both air and paint flow.
- Application Tips:**
 - Maintain a consistent distance from your working surface.
 - Move the airbrush in smooth, even strokes.
 - For detailed work, use the 0.3mm fluid tip and lower pressure settings.
 - Practice on scrap material before working on your final project.

CLEANING AND MAINTENANCE

Proper cleaning after each use is crucial to prevent clogging and ensure the longevity of your airbrush kit.

- Initial Rinse:** Empty any remaining material from the paint cup. Add airbrush cleaner or clean water to the cup.

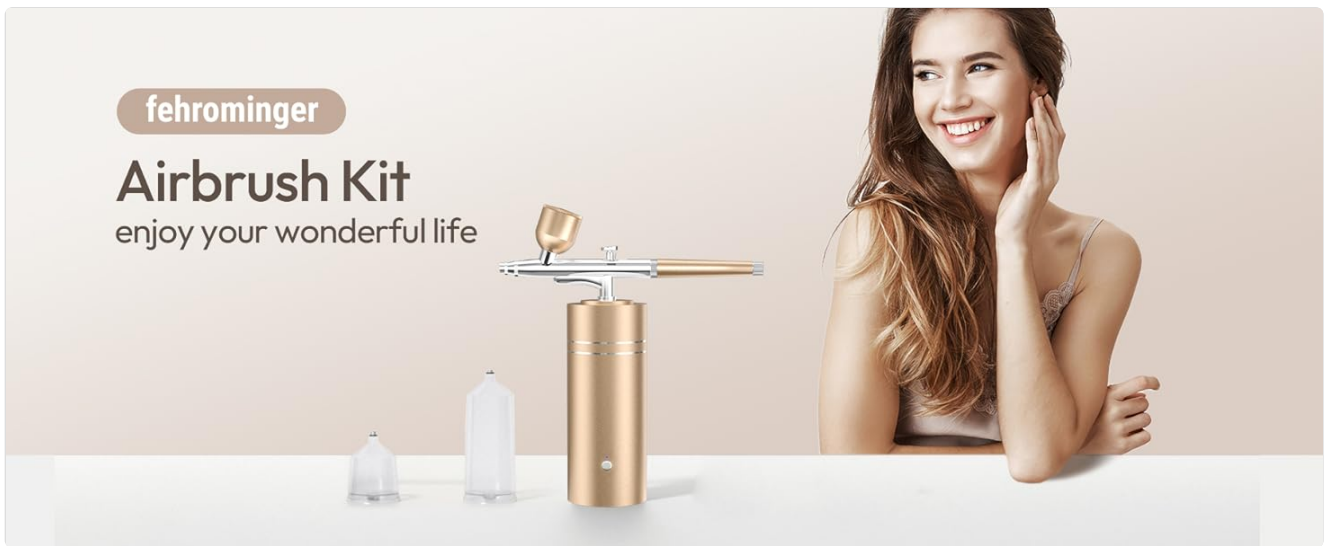


Image: Demonstrates adding cleaning solution or water into the airbrush's fluid cup for initial rinsing.

2. **Back-Flush:** Hold your finger over the nozzle while pulling the trigger back. This will cause air to bubble back into the cup, cleaning the internal passages. Repeat 2-3 times.

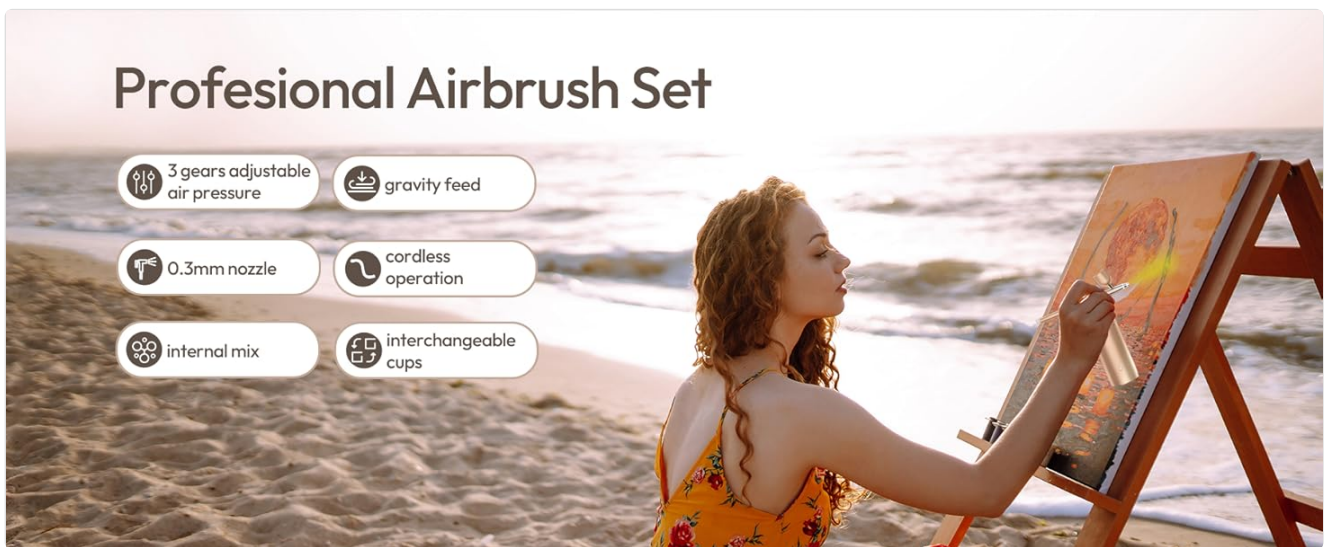


Image: Shows the technique of back-flushing the airbrush by blocking the nozzle and pulling the trigger to clean internal components.

3. **Spray Clean:** Spray the cleaner through the airbrush until it sprays clear. Repeat 2-3 times to ensure the interior is clean.



Image: Illustrates spraying cleaning solution through the airbrush to flush out any remaining paint until the spray is clear.

4. **Disassemble and Deep Clean:** For thorough cleaning, especially after using thicker materials, disassemble the airbrush gun.

- Unscrew and remove the 0.3mm nozzle.

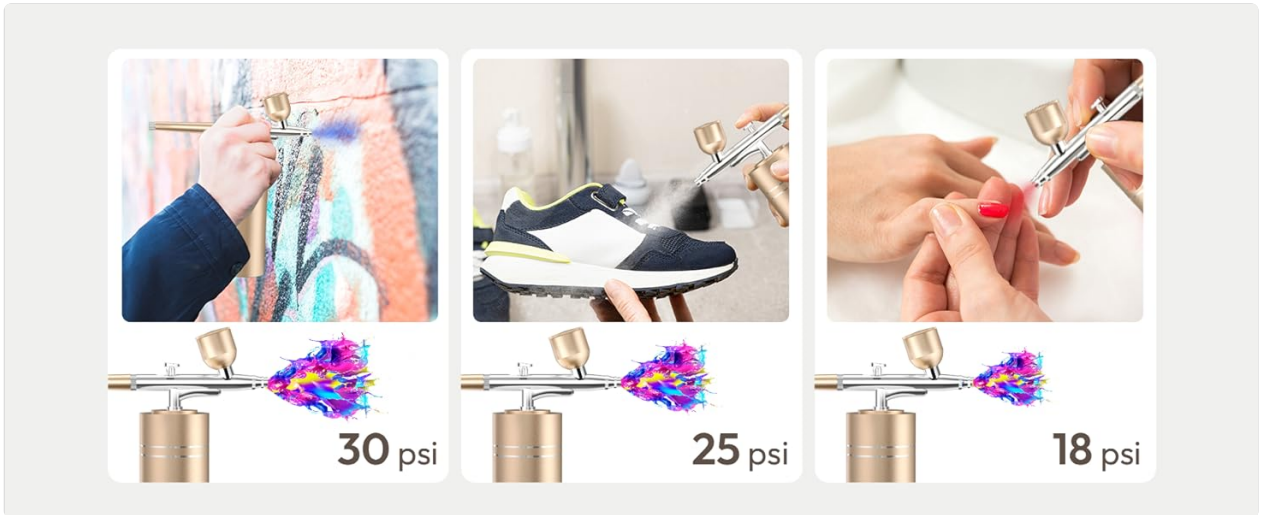


Image: Shows how to carefully unscrew and remove the 0.3mm nozzle for detailed cleaning.

- Disassemble the back parts of the airbrush gun.



Image: Illustrates the process of disassembling the rear section of the airbrush gun for access to the needle.

- Carefully remove the needle and clean it thoroughly using one of the provided cleaning brushes and cleaner.



Image: Shows the careful removal of the airbrush needle and its subsequent cleaning.

- Use the remaining cleaning brushes to clean the paint cup and other internal components.

5. **Reassemble:** Once all parts are clean and dry, carefully reassemble the airbrush gun.

TROUBLESHOOTING

Problem	Possible Cause	Solution
No spray or weak spray	Paint is too thick or clogged. Nozzle or needle is blocked. Low battery on compressor. Airbrush not properly connected.	Dilute paint to proper consistency. Perform thorough cleaning as per Maintenance section. Recharge the compressor. Ensure airbrush is securely screwed onto compressor.
Uneven spray pattern	Partial clog in nozzle. Improper paint dilution. Damaged needle or nozzle.	Clean nozzle and needle thoroughly. Adjust paint dilution. Inspect and replace if necessary.
Paint bubbling in cup	Clog in nozzle. Loose nozzle.	Clean nozzle thoroughly. Tighten nozzle securely.

PRODUCT SPECIFICATIONS

Feature	Detail
Brand	fehrominger
Model Name	Airbrush Set
ASIN	B098WT1DGC
UPC	785382311592
Maximum Operating Pressure	30 PSI (adjustable to 25 PSI, 18 PSI)
Fluid Tip Size	0.3mm
Power Source	Battery Powered (Rechargeable Lithium Ion)
Continuous Working Time	More than 60 minutes (on full charge)
Included Components	Airbrush gun, compressor, 3 paint cups, 5 cleaning brushes, USB charging cable
Item Weight	1.06 pounds (0.48 Kilograms)
Product Dimensions	6.81 x 2.68 x 6.81 inches
Color	Gold

WARRANTY AND SUPPORT

The fehrominger Airbrush Kit comes with a limited warranty. Please refer to the product packaging or the official fehrominger website for detailed warranty terms and conditions.

For technical support, troubleshooting assistance, or inquiries regarding replacement parts, please visit the official fehrominger store on Amazon or contact their customer service directly. You can find more information at the [fehrominger](#)

Store.

© 2024 fehrominger. All rights reserved.