

## Manuals+

[Q & A](#) | [Deep Search](#) | [Upload](#)

[manuals.plus](#) /

- › [DieseRC](#) /
- › [DieseRC Wireless Remote Control Switch User Manual](#)

## DieseRC 2 Boutons

# DieseRC Wireless Remote Control Switch User Manual

Model: 2 Buttons

Brand: DieseRC

## PRODUCT OVERVIEW

The DieseRC AC 110V-240V Wireless Remote Control Switch is a versatile 433Mhz RF 10A 2CH Relay Receiver designed for various applications, including garage doors, electric curtains, motors, and lighting. It offers stable and reliable performance with high reception sensitivity, allowing control within 50 meters distance without obstacles. This product features a high-quality relay capable of over 100,000 operations, ensuring long-lasting and stable use. The blue high-power terminal can withstand a current of 10A, making it suitable for unstable current conditions. The receiver supports a wide voltage range from 85V to 250V AC.



Figure 1: DieseRC Wireless Remote Control Switch components, including the receiver and two remote transmitters.

## SETUP AND WIRING

The receiver contains two independent relays, each with three terminals: Normally Open (NO), Common (COM), and Normally Closed (NC). This allows for flexible control of various devices. The product is designed for easy setup and can be configured for momentary, toggle, or latched operating modes.

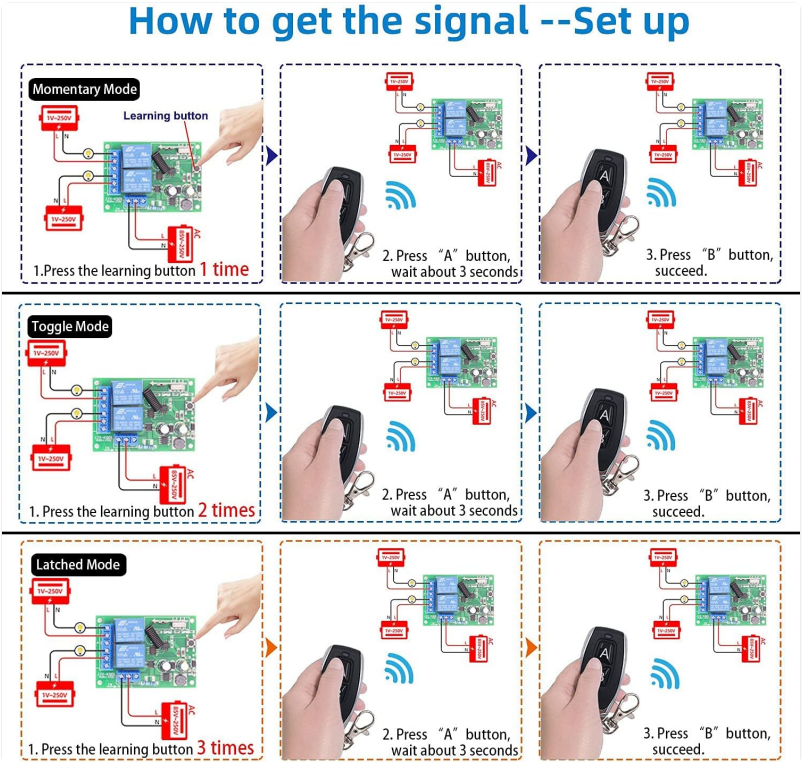


Figure 2: Product Details - Receiver board showing terminal connections and learning button.

## Wiring Diagrams

Below are common wiring configurations for different applications:

## 4 Wiring modes

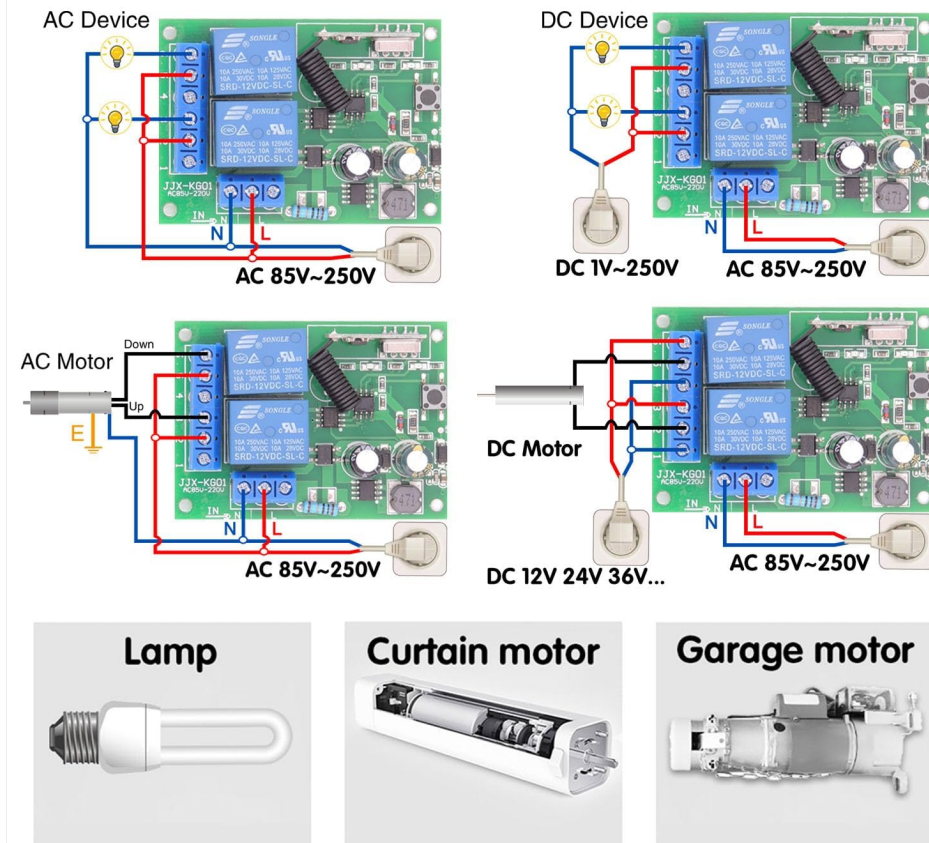


Figure 3: Wiring for AC Motor Control (Forward/Reverse).

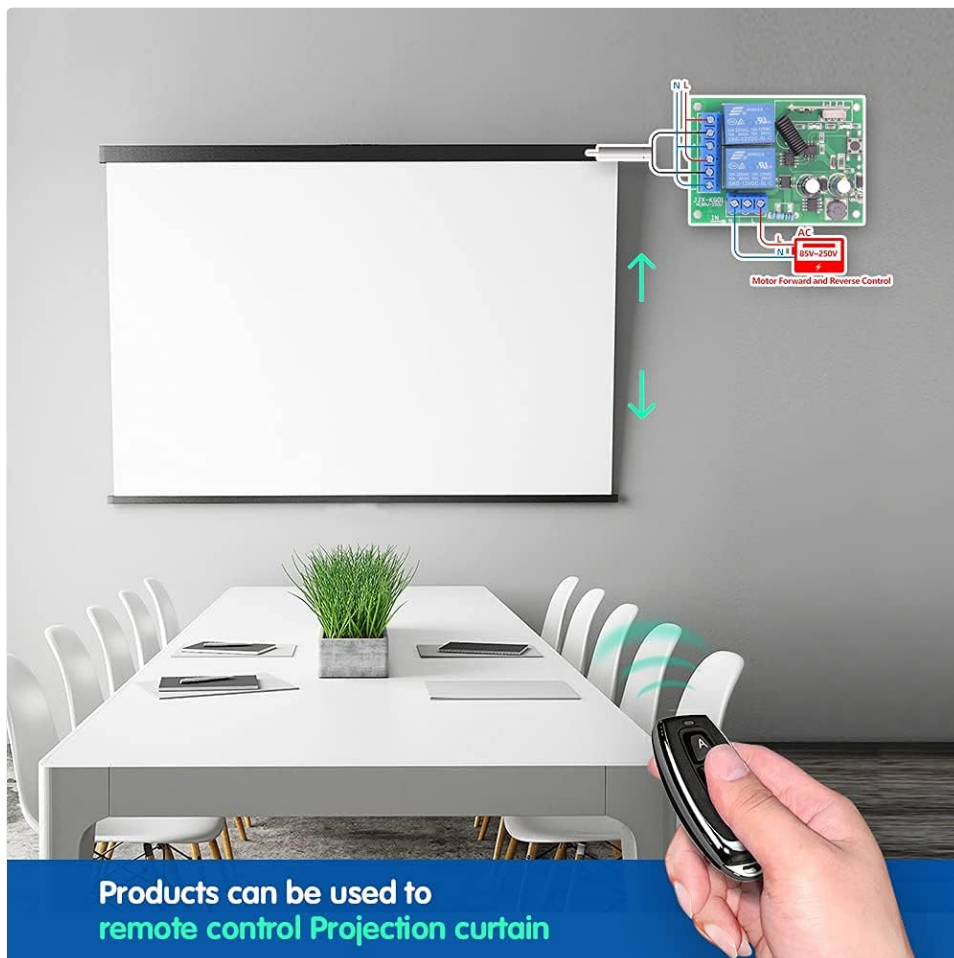


Figure 4: Wiring for DC Motor Control.

## Product Details

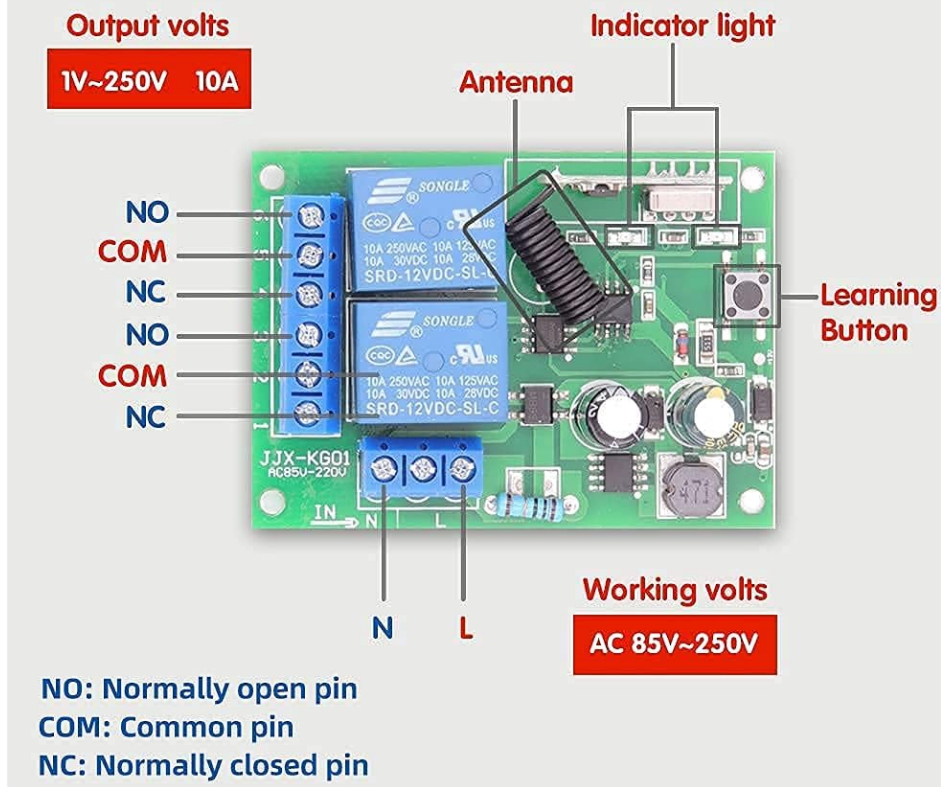


Figure 5: Wiring for Light Control.

## OPERATING MODES

The receiver supports three operating modes: Momentary, Toggle, and Latched. The default mode is Toggle. You can easily switch between modes based on your application needs.





Figure 6: Illustration of Operating Modes.

### Mode Descriptions:

- **Momentary Mode:** The relay remains active only while the remote button is pressed. Releasing the button deactivates the relay. This is ideal for applications requiring a brief pulse, such as garage door openers.
- **Toggle Mode:** Pressing the remote button once activates the relay, and it remains active until the same button is pressed again. This is suitable for on/off control of lights or fans.
- **Latched Mode:** Pressing button 'A' activates Relay 1 and deactivates Relay 2 (if active). Pressing button 'B' activates Relay 2 and deactivates Relay 1. This mode requires a remote control with at least two distinct buttons (A and B) to switch between states.

### PROGRAMMING THE REMOTE CONTROL

The receiver can store up to 20 transmitters. One transmitter can also control multiple receivers. Follow these steps to program your remote control to the desired operating mode:

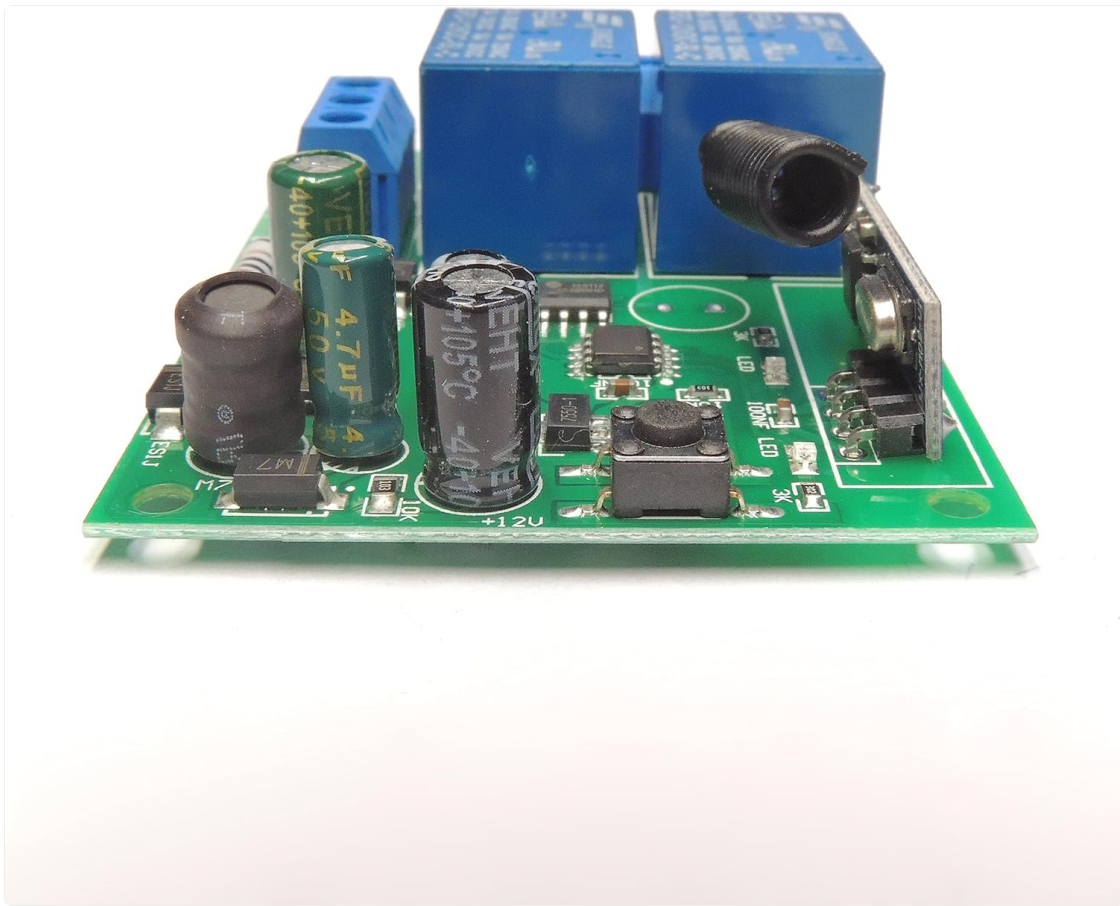


Figure 7: Programming Steps for Different Modes.

### Programming Steps:

#### 1. Select Mode:

- For *Momentary Mode*: Press the learning button on the receiver board **1 time**.
- For *Toggle Mode*: Press the learning button on the receiver board **2 times**.
- For *Latched Mode*: Press the learning button on the receiver board **3 times**.

2. After pressing the learning button the specified number of times, the indicator light on the receiver will blink.
3. Press the desired button (e.g., 'A' or 'B') on your remote control. The indicator light on the receiver will blink rapidly and then turn off, indicating successful pairing.
4. Test the remote control to ensure it operates in the selected mode.

### Resetting the Receiver:

To clear all programmed remote controls from the receiver, press the learning button on the receiver board **8 times**. The indicator light will blink rapidly and then turn off, confirming that all stored remote controls have been cleared.



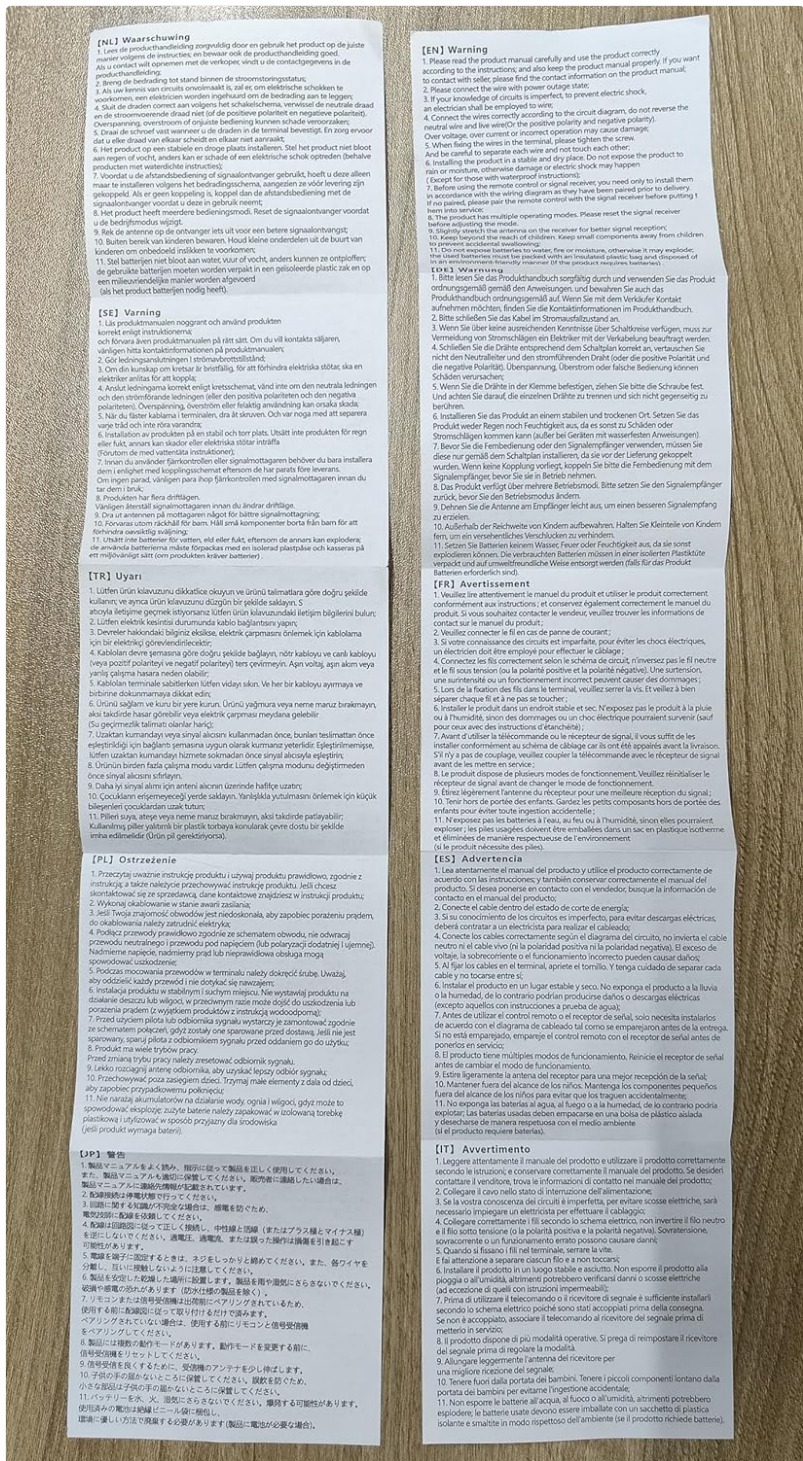


Figure 8: Resetting the Receiver.

## Official Programming Video:

Your browser does not support the video tag.

Video 1: How to program the DieseRC remote control switch. This video demonstrates the programming steps for momentary, toggle, and latched modes, as well as how to reset the receiver.

## APPLICATIONS

The DieseRC Wireless Remote Control Switch is suitable for a wide range of applications in homes, farms, factories, offices, laboratories, and supermarkets. It can remotely operate various devices connected to the relay receiver.

- **Garage Doors:** Control opening and closing of garage doors.
- **Electric Curtains:** Operate electric curtains or blinds.

- **Motors:** Control various types of motors, including those for expansion doors or shutters.
- **Lighting:** Turn lights on and off remotely.
- **Fans and Ventilation Devices:** Remote control for fans and other ventilation systems.
- **Signal Transmission:** Can be used for general signal transmission in DIY projects.



Figure 9: Remote control of a garage door.



Figure 10: Remote control of lighting.





Figure 11: Remote control of a projection screen.

## SPECIFICATIONS

Feature	Detail
Brand	DieseRC
Model Number	2 Boutons
Connector Type	Wireless
Contact Material	Aluminum
Contact Type	Normally Open
Current Rating	10 Amps
Mounting Type	Wall Mount
Operation Mode	Momentary, Toggle, Latched
Wattage	2500 watts
Coil Voltage	85 Volts (AC)
Minimum Switching Voltage	85 Volts
Item Weight	4.9 ounces
Package Dimensions	4.06 x 3.74 x 1.54 inches
Country of Origin	China
Batteries Required	Yes (2 CR2 batteries included)
Battery Cell Type	Lithium Manganese Dioxide

## MAINTENANCE

To ensure optimal performance and longevity of your DieseRC Wireless Remote Control Switch, follow these maintenance guidelines:

- Keep the receiver and remote transmitters clean and free from dust and debris. Use a soft, dry cloth for cleaning.
- Avoid exposing the devices to extreme temperatures, humidity, or direct sunlight.
- Ensure all wiring connections are secure and free from corrosion. Periodically check connections if the device is in a high-vibration environment.
- Replace remote control batteries (2 CR2) when the signal strength weakens or the indicator light on the remote does not illuminate consistently.
- Do not attempt to disassemble or repair the device yourself. Refer to qualified personnel for any repairs.

## TROUBLESHOOTING

If you encounter issues with your DieseRC Wireless Remote Control Switch, consider the following troubleshooting steps:

- **Device not responding to remote:**
  - Check if the receiver is properly powered (85V-250V AC).
  - Ensure the remote control batteries are not depleted. Replace if necessary.
  - Verify that the remote control is paired with the receiver. If not, follow the programming steps in the "Programming the Remote Control" section.
  - Check for strong interference from other RF devices in the vicinity.
  - Ensure the remote is within the effective operating range (up to 50 meters without obstacles). Walls, floors, and doors can reduce range.
- **Incorrect operating mode:**
  - If the device is not operating in the desired momentary, toggle, or latched mode, reset the receiver (press learning button 8 times) and then reprogram the remote control to the correct mode.
- **Intermittent operation:**
  - Check all wiring connections for looseness or corrosion.
  - Ensure the receiver's antenna is not obstructed or damaged.
  - Consider potential sources of electrical noise or interference.

If the problem persists after attempting these steps, please contact customer support.

## WARRANTY AND SUPPORT

DieseRC is committed to providing high-quality products and excellent customer service. For any questions, technical assistance, or warranty claims, please contact us using the information below.

**Manufacturer/Importer:** Huizhou Wenqiao Electronic Technology Co., Ltd.

**Address:** Room 03, 12th Floor, Building T19, East Coast Garden, Fangzhilonghuwan, No. 27, Sanhuan South Road, Huicheng District, Huizhou City, Guangdong Province, China 516001

**Service Email:** [dieseelectronic@163.com](mailto:dieseelectronic@163.com)

For UK customers, the authorized representative is:

**Company name:** YH Consulting Limited

**Address:** C/O YH Consulting Limited Office 147, Centurion House, Staines-upon-Thames, Surrey, TW18 4AX

For EC customers, the authorized representative is:

**Company:** E-CrossStu GmbH

**Address:** Mainzer Landstr. 69, Frankfurt am Main, Hessen, 60329

**E-mail:** [E-CrossStu@web.de](mailto:E-CrossStu@web.de)

Please retain your purchase receipt for warranty purposes.

