

## X-PRO Titan 250cc Dirt Bike

# X-PRO Titan 250cc Dirt Bike Instruction Manual

Model: Titan 250cc

## INTRODUCTION

This manual provides essential information for the safe and efficient operation, assembly, and maintenance of your X-PRO Titan 250cc Dirt Bike. Please read this manual thoroughly before operating the vehicle.

The X-PRO Titan 250cc Dirt Bike features a robust 232.6cc Zongshen engine, known for its reliability and power. It is equipped with an inverted front fork for superior damping and steering precision, optimized for easy handling. Efficient LED headlights provide better visibility with less energy consumption. The exhaust system is designed to reduce noise and safely discharge high-temperature gases.

## SAFETY INFORMATION

### WARNING:

- Improper use of this motorcycle can result in severe injury or death.
- Always use an approved helmet and protective gear.
- Never use on public roads.
- Never use with drugs or alcohol.

This bike is intended for off-road use only. Ensure you are familiar with all local regulations regarding off-road vehicle operation.

## UNPACKING AND INITIAL SETUP

Your X-PRO Titan 250cc Dirt Bike requires some assembly. The following video provides a visual guide for the unpacking and initial setup process. Please note that the Titan 250 version does not come with a dashboard, mirrors, turn signals, or tail light, and this video is provided for general installation reference only.

Your browser does not support the video tag.

Text description: This video demonstrates the unpacking and assembly of the X-Pro Titan 250cc Dirt Bike. It shows how to remove the bike from its shipping crate, cut zip ties, install the handlebars, front wheel, and connect the battery. It also covers attaching the front fender and headlight assembly. Please note that some components shown in the video, such as mirrors or turn signals, may not be included with the Titan 250 version.

## Assembly Steps:

1. **Uncrating:** Carefully remove the outer cardboard box and metal frame. Cut all zip ties securing the bike and its components.
2. **Handlebar Installation:** Attach the handlebar risers to the triple clamp, then secure the handlebars. Ensure all bolts are tightened to specification.
3. **Front Wheel Assembly:** Install the front wheel, ensuring the brake caliper aligns correctly with the disc. Insert the axle and tighten securely.
4. **Front Fender and Headlight:** Attach the front fender and headlight assembly. Connect any necessary wiring.
5. **Battery Connection:** Connect the battery terminals, ensuring correct polarity (red to positive, black to negative).
6. **Final Checks:** Before first use, inspect all bolts and fasteners for tightness. Check tire pressure, brake fluid levels, and chain tension.



Image description: A side view of the X-PRO Titan 250cc Dirt Bike in black and silver, showcasing its design and large wheels.

## OPERATING INSTRUCTIONS

### Starting the Engine:

1. Ensure the fuel tank has sufficient gasoline.
2. Turn the fuel valve to the "ON" position.
3. If the engine is cold, pull the choke lever to the "ON" position.

4. Turn the ignition key to "ON".
5. Press the electric start button or use the kick starter.
6. Once the engine starts, gradually push the choke lever to "OFF" as the engine warms up.

## Gear Shifting:

The X-PRO Titan 250cc Dirt Bike features a 5-speed manual transmission. Familiarize yourself with the gear shift pattern before riding.

- Shift down for lower gears (more torque).
- Shift up for higher gears (more speed).
- Always use the clutch when shifting gears.

## MAINTENANCE

---

Regular maintenance is crucial for the longevity and safe operation of your dirt bike. Perform checks before each ride and adhere to the maintenance schedule.

### Pre-Ride Checks:

- **Tires:** Check tire pressure and condition.
- **Brakes:** Verify brake lever/pedal free play and effectiveness. Check brake fluid levels.
- **Chain:** Inspect chain tension and lubrication.
- **Controls:** Ensure throttle, clutch, and brake levers operate smoothly.
- **Fasteners:** Check all nuts, bolts, and fasteners for tightness.

### Scheduled Maintenance:

- **Oil Change:** Change engine oil after the first 20 hours of operation, then every 50 hours or as recommended by the engine manufacturer.
- **Air Filter:** Clean or replace the air filter regularly, especially when riding in dusty conditions.
- **Spark Plug:** Inspect and clean the spark plug every 100 hours. Replace if necessary.
- **Suspension:** Periodically check the front fork and rear shock for leaks or damage.

## TROUBLESHOOTING

---

This section addresses common issues you might encounter with your dirt bike.

Problem	Possible Cause	Solution
Engine won't start	No fuel, dead battery, fouled spark plug, incorrect choke setting.	Check fuel level, charge/replace battery, clean/replace spark plug, adjust choke.
Loss of power	Clogged air filter, old fuel, spark plug issue, carburetor problem.	Clean air filter, use fresh fuel, inspect spark plug, clean carburetor.
Brakes feel spongy	Air in brake lines, low brake fluid, worn brake pads.	Bleed brake lines, top up brake fluid, replace brake pads.

If you encounter issues not listed here or cannot resolve a problem, please contact XPROUSA customer

support.

## SPECIFICATIONS

---

Feature	Detail
Bike Type	Dirt Bike
Brand	X-PRO
Engine	232.6cc Zongshen Engine
Number of Speeds	5
Color	Black (variant shown)
Suspension Type	Front (Inverted Front Fork)
Dimensions	86.6" x 31.5" x 48"
Brake Style	Disc
Power Source	Gas
Wheel Material	Aluminum
Maximum Weight Recommendation	176 Pounds
Minimum User Height	36 Inches
Assembly Required	Yes

## WHAT'S IN THE BOX

---

- 1x X-PRO Titan 250cc Dirt Bike (partially assembled)
- Assembly hardware and tools (may vary)
- Manufacturer Statement of Origin (MSO) and Bill of Sale (sent separately)

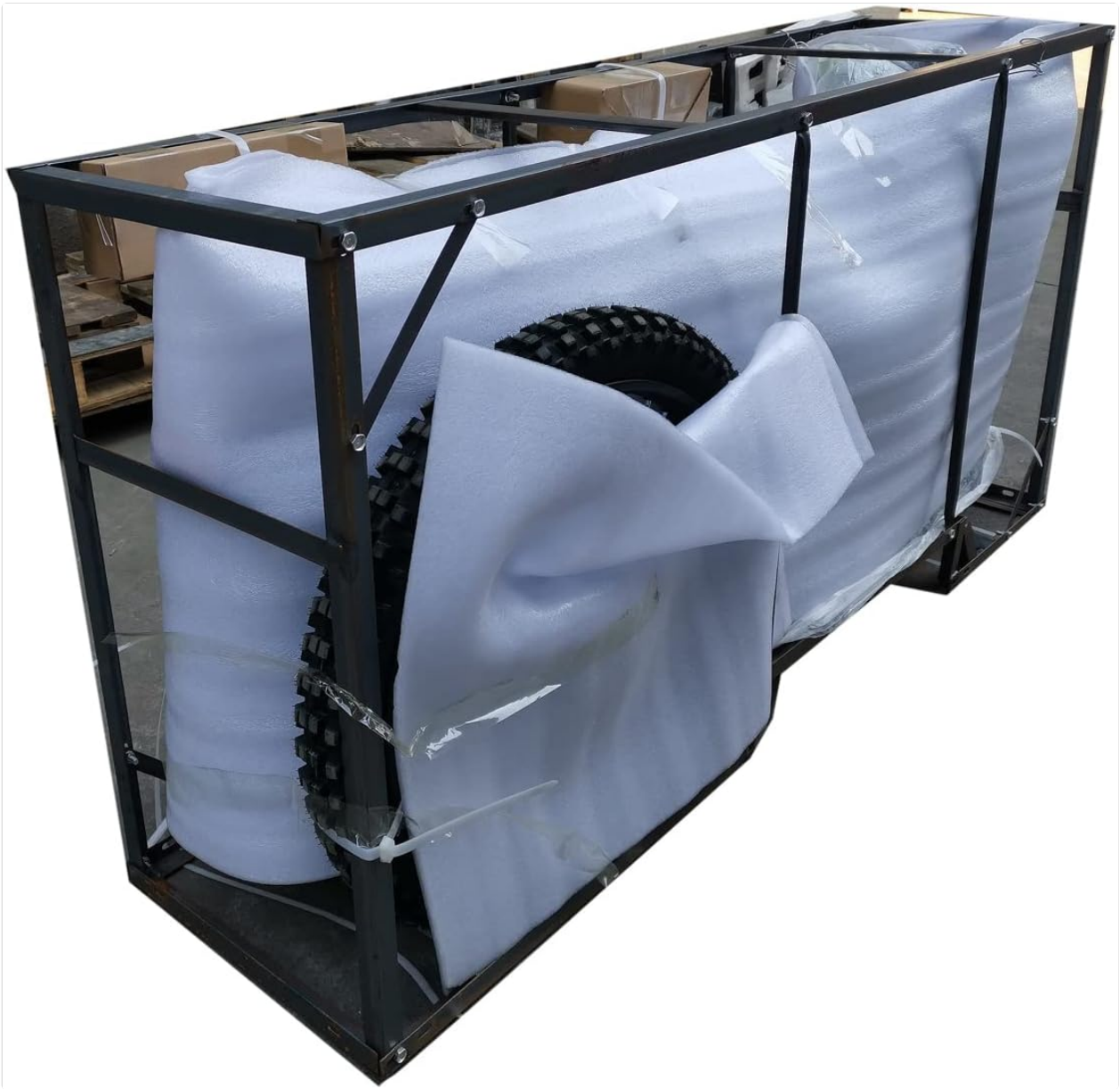


Image description: The X-PRO Titan 250cc Dirt Bike securely packaged within a metal frame and protective wrapping inside its shipping crate.

## **WARRANTY AND SUPPORT**

---

The X-PRO Titan 250cc Dirt Bike comes with a limited warranty. For specific details regarding warranty coverage, please refer to the documentation included with your purchase or contact XPROUSA customer service.

For any questions, technical assistance, or parts inquiries, please contact XPROUSA directly. Their dedicated after-sales team is committed to providing quick response times and strong customer satisfaction.

[Visit the X-PRO Store on Amazon](#)