



Manuals.plus /

› Anbull /

› ANBULL Cordless Fuel Transfer Pump SN-1320 Instruction Manual

Anbull SN-1320

ANBULL Cordless Fuel Transfer Pump

Model: SN-1320 | Brand: Anbull

IMPORTANT SAFETY INFORMATION

Please read this manual carefully before operating the pump. Failure to follow instructions may result in injury or damage.

- This pump is designed for transferring diesel, kerosene, and biodiesel only.
- **DO NOT** use with gasoline, liquefied petroleum gas, alcohol, water, or other highly flammable or corrosive liquids.
- Ensure proper ventilation during operation.
- Keep away from open flames, sparks, and heat sources.
- Wear appropriate personal protective equipment (PPE) such as gloves and eye protection.
- Keep children and unauthorized personnel away from the operating area.

PRODUCT OVERVIEW

The ANBULL Cordless Fuel Transfer Pump is a portable, battery-operated device designed for efficient transfer of diesel, kerosene, and biodiesel. It features a self-priming rotating vane pump and a powerful motor for quick liquid transfer.

High-Power Copper Motor

High-power pumping experts,
high-efficiency pumping

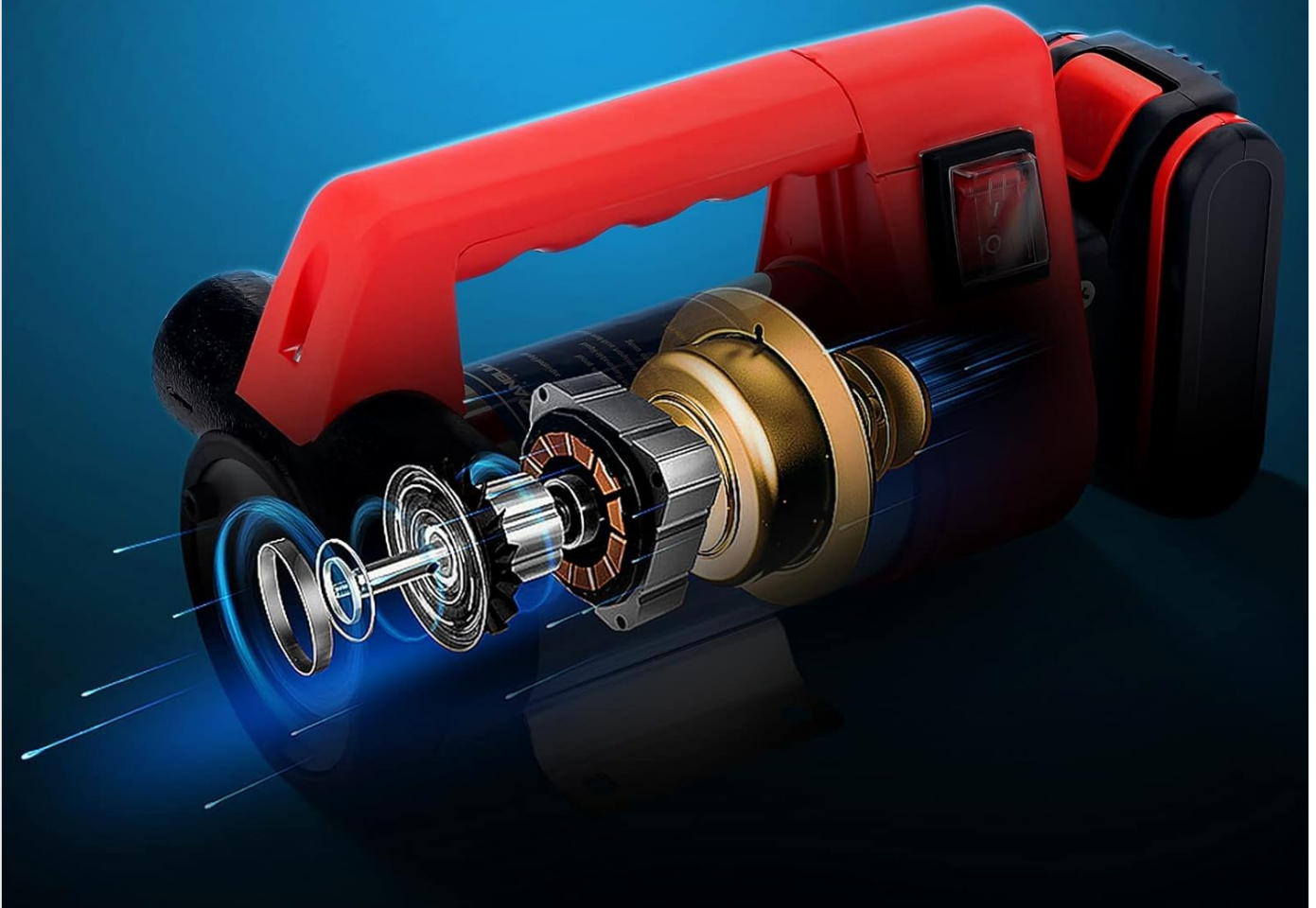


Figure 1: Main unit of the ANBULL Cordless Fuel Transfer Pump. The pump features a red handle and a silver cylindrical body, with a black battery pack attached.

SETUP

1. Charging the Battery

The pump operates on an 18V Lithium-Ion battery. Before first use, ensure the battery is fully charged using the provided charger. The battery power is typically between 30-45% upon shipment and may experience power loss during transit and storage.

2500mah large capacity battery

High-intensity and long-lasting
battery life

Large capacity battery

Accumulator

Good safety and
waterproof performance

Not waterproof and
not available in rainy days

Figure 2: The 2500mAh Lithium-Ion battery pack and its dedicated charger. The battery is black and red, designed to attach to the pump unit.

2. Attaching Hoses and Fittings

The pump comes with 1-inch fittings suitable for standard hoses. Use the provided hose clamps and Teflon tape to ensure secure and leak-free connections.

- Attach the intake hose to the inlet port (indicated by a directional arrow).
- Attach the discharge hose to the outlet port.
- Ensure the strainer is attached to the end of the intake hose to prevent debris from entering the pump.



Power: 360W

Load speed: 3000 RPM

Waterproof level: IP55

No-Load Speed: 4200 RPM

Pump Weight: 8.8Lbs

Inlet Connection Size: 1 inch

Max Lift: 10m (32 feet)

Pump Flow Rate: Up to 45(L/Min) / 12GPM

Compatibility: Diesel, Biodiesel, and Kerosene only (not suitable for gasoline)

Figure 3: Various fittings, hose clamps, and a strainer included with the pump for hose connections.

3. Mounting the Pump

The pump features a mountable base for stable operation. It can be placed on a flat surface or secured using the mounting holes.

Your browser does not support the video tag.

Video 1: A user demonstrates the unboxing and initial setup of the ANBULL Cordless Fuel Transfer Pump, including attaching hoses and preparing for use. This video highlights the pump's portability and ease of assembly.

OPERATING INSTRUCTIONS

1. Fuel Compatibility

This pump is compatible with diesel, biodiesel, and kerosene only. **DO NOT** use with low flammability fuels such as gasoline, liquefied petroleum gas, or alcohol.

2. Transferring Fuel

- Place the intake hose with the strainer into the source container of the liquid.
- Place the discharge hose into the receiving container.
- Ensure all connections are secure and there are no kinks in the hoses.
- Turn on the pump using the ON/OFF switch. The self-priming feature will initiate the flow.
- The 260W 3600rpm motor can transfer fuel up to 45L/12 gallons per minute.
- Monitor the transfer process to prevent overfilling.
- Once transfer is complete, turn off the pump.

Easy to carry

The body is small and easy to carry



Figure 4: The pump's ergonomic handle makes it easy to carry, emphasizing its portable design for various applications.

Your browser does not support the video tag.

Video 2: This video demonstrates the ANBULL Fuel Transfer Pump in action, efficiently transferring fuel from a container into a boat, showcasing its powerful pumping capability.

Wide Application

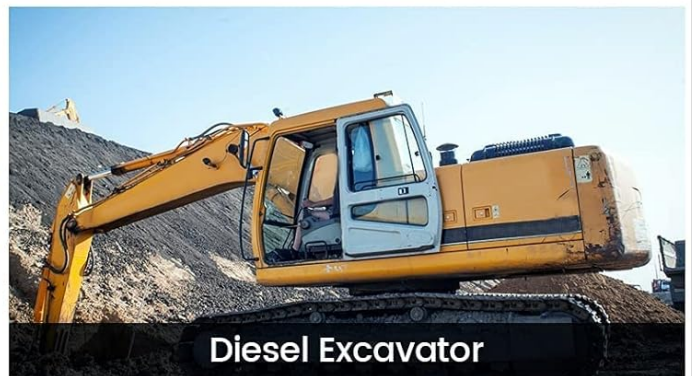


Figure 5: Examples of wide applications for the pump, including agricultural equipment, diesel ships, diesel trucks, diesel excavators, oil drums, and construction machinery.

MAINTENANCE

1. Cleaning and Inspection

- Regularly inspect hoses and fittings for wear, cracks, or leaks. Replace damaged components immediately.
- Clean the intake strainer periodically to ensure unrestricted flow and prevent pump damage.
- Wipe down the pump exterior after each use to remove any fuel residue. The pump has an IP55 waterproof protection rating.
- Ensure the dust cover is in place when not in use to prevent contamination.

PRODUCT DETAILS



■ Dust cover

Prevent dust from entering and contaminating oil



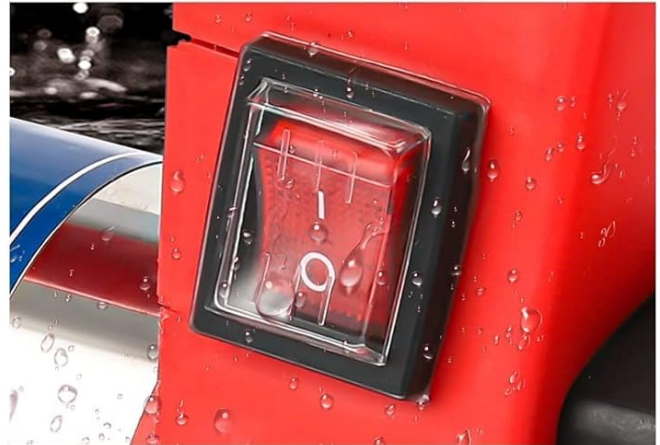
■ Ergonomic handrail

Easy to carry, comfortable to hold



■ Good sole stability

Not easy to fall off not easy to deform



■ Transparent safety cover

Dustproof waterproof anti-electric

Figure 6: Detailed view of the pump's features, including a dust cover for protection, an ergonomic handrail for comfortable use, good sole stability for secure placement, and a transparent safety cover for the switch.

2. Storage

Store the pump in a clean, dry place away from direct sunlight and extreme temperatures. Ensure the battery is removed if storing for extended periods.

TROUBLESHOOTING

Problem	Possible Cause	Solution
Pump does not turn on	Low or uncharged battery; faulty ON/OFF switch; loose battery connection.	Charge the battery fully. Ensure battery is securely connected. Check switch for damage.
Pump runs but does not prime/transfer liquid	Air leak in intake hose/fittings; clogged strainer; liquid level too low for priming; pump used with incompatible liquid.	Check all intake connections for tightness. Clean the strainer. Ensure intake hose is fully submerged. Verify liquid is compatible (diesel, kerosene, biodiesel).
Reduced flow rate	Clogged strainer; kinked hose; low battery charge.	Clean the strainer. Straighten hoses. Recharge battery.
Charger not working	Faulty charger unit.	Contact customer support for a replacement charger.

SPECIFICATIONS

Feature	Detail
Brand	Anbull
Model Number	SN-1320
Power	260W
Motor Speed	3600 rpm
Flow Rate	Up to 45 L/min (12 GPM)
Max Lift	16 ft
Battery	18V 2500mAh Lithium-Ion
Compatibility	Diesel, Biodiesel, Kerosene (Not for gasoline, water, alcohol)
Waterproof Rating	IP55
Item Dimensions (L x W x H)	13.7 x 7.8 x 7.5 inches
Item Weight	8.4 pounds
Material	Alloy Steel, Copper

WARRANTY AND SUPPORT

The ANBULL Cordless Fuel Transfer Pump comes with a **12-month warranty**. For any questions or support during use, please contact ANBULL customer service.

For further assistance, please visit the Anbull Store on Amazon.

