

MT-VIKI MT-HD0808-W

MT-VIKI 4K HDMI Matrix Switch 8x8 User Manual

Model: MT-HD0808-W

[Introduction](#) [Safety](#) [Contents](#) [Overview](#) [Setup](#) [Operating](#) [Specifications](#) [Troubleshooting](#) [Maintenance](#) [Index](#)

1. INTRODUCTION

The MT-VIKI 4K HDMI Matrix Switch 8x8 (Model MT-HD0808-W) is a high-performance professional switching device designed to route up to eight distinct HDMI source signals to any of eight connected HDMI displays. This matrix switch offers flexible control options including front panel buttons, an infrared (IR) remote control, RS232 serial port, LAN port, and a Web-based Graphical User Interface (GUI). It supports resolutions up to 4K@30Hz, 1080P@60Hz, and 3D, along with HDCP decoding and advanced EDID management. The unit is built with a US ADI chip for high bandwidth and synchronous signal switching, making it suitable for various professional audio-visual environments.



Image 1.1: Front view of the MT-VIKI 4K HDMI Matrix Switch 8x8.

2. SAFETY INFORMATION

Please read and follow these safety instructions carefully to ensure safe operation and to prevent damage to the device:

- Do not expose this unit to water, moisture, or excessive humidity.
- Ensure proper ventilation around the unit to prevent overheating.
- Use only the provided power adapter. Using an unauthorized adapter may damage the device and void the

warranty.

- Do not attempt to open or modify the unit. Refer all servicing to qualified personnel.
- Keep the device away from sources of heat, direct sunlight, and strong magnetic fields.
- Disconnect power during lightning storms or when unused for long periods.

3. PACKAGE CONTENTS

Verify that all items are present in the package:

- 1 x MT-VIKI 4K HDMI Matrix Switch 8x8 (Model: MT-HD0808-W)
- 1 x Power Adapter (DC 12V)
- 1 x IR Remote Control
- 2 x Rack Mount Ears with Screws
- 1 x User Manual / CD Driver (containing MatrixController software)



Image 3.1: MT-VIKI HDMI Matrix Switch and its accessories.

4. PRODUCT OVERVIEW

Familiarize yourself with the front and rear panels of the MT-VIKI HDMI Matrix Switch.



Image 4.1: Front and Rear Panel Layout.

4.1 Front Panel

- **LCD Screen:** Displays current input/output status and menu information.
- **Power Indicator:** Illuminates when the device is powered on.
- **IR Receiver:** Receives signals from the IR remote control.
- **Input Buttons (1-8):** Selects the HDMI input source.
- **Output Buttons (1-8):** Selects the HDMI output display.
- **Control Buttons (ALL, EDID, UP, DOWN, ENTER, MENU):** Used for system configuration, EDID management, and navigating menus.

4.2 Rear Panel

- **HDMI Inputs (IN1-IN8):** Connect your HDMI source devices (e.g., Blu-ray player, computer, set-top box).
- **HDMI Outputs (OUT1-OUT8):** Connect your HDMI display devices (e.g., TV, monitor, projector).
- **RS232 In/Out:** Serial port for advanced control via a computer or control system.
- **LAN Port:** Ethernet port for Web GUI control and network-based control.
- **DC 12V Power Port:** Connect the provided power adapter.
- **ON/OFF Switch:** Main power switch for the unit.

5. SETUP

5.1 Physical Connections

Follow these steps to connect your devices to the HDMI Matrix Switch:

1. Ensure all devices (HDMI sources, displays, and the matrix switch) are powered off before making connections.
2. Connect your HDMI source devices (e.g., computer, laptop, decoder, set-top box, DVD player) to the **HDMI Input**

ports (IN1-IN8) on the rear panel of the matrix switch using high-quality HDMI cables.

3. Connect your HDMI display devices (e.g., monitor, TV, projector) to the **HDMI Output ports (OUT1-OUT8)** on the rear panel of the matrix switch using high-quality HDMI cables.
4. For network control, connect an Ethernet cable from your router or network switch to the **LAN Port** on the rear panel.
5. For serial control, connect an RS232 cable from your control system to the **RS232 In** port.
6. Connect the provided **DC 12V Power Adapter** to the power port on the rear panel, then plug the adapter into a power outlet.
7. Turn on the matrix switch using the **ON/OFF switch** on the rear panel, then power on your HDMI sources and displays.



Image 5.1: Connection Diagram for the HDMI Matrix Switch.

5.2 Rack Mounting

The MT-VIKI HDMI Matrix Switch is designed for standard 1U 19-inch cabinet/rack mounting. Attach the included rack mount ears to the sides of the unit using the provided screws, then secure the unit into your equipment rack.

5.3 EDID Management

EDID (Extended Display Identification Data) management ensures optimal compatibility between your HDMI sources and displays. The matrix switch supports automatic EDID identification. If you encounter display issues, you may need to manually adjust EDID settings using the front panel 'EDID' button or the Web GUI. Refer to the detailed instructions in the 'Operating Instructions' section for EDID configuration.

6. OPERATING INSTRUCTIONS

The MT-VIKI HDMI Matrix Switch offers multiple methods for controlling input and output routing.

6.1 Front Panel Control

Use the buttons on the front panel to select inputs and outputs:

- To route a specific input to an output: Press the desired **Input button (1-8)**, then press the desired **Output button (1-8)**. The LCD screen will confirm the routing.
- To route one input to all outputs: Press the desired **Input button (1-8)**, then press the **ALL** button.
- The **EDID** button allows for EDID management. Use **UP/DOWN** to navigate and **ENTER** to confirm.
- The **MENU** button accesses system settings. Use **UP/DOWN** to navigate and **ENTER** to confirm.

HDMI Matrix is best for

Information Center, computer room, video surveillance,
night club, home theater, stock market, bars....



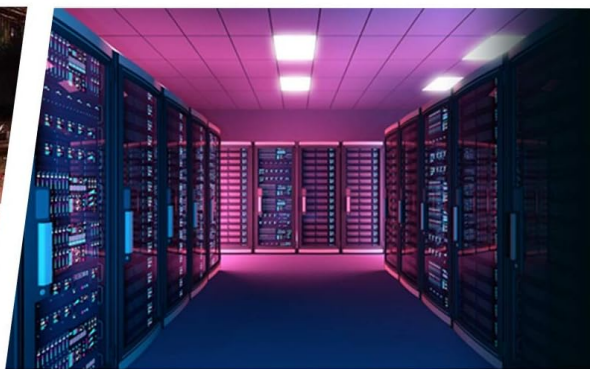
▪ Video Surveillance



▪ Information Center



▪ Bar



▪ Computer Room Management

Image 6.1: Front Panel Control Buttons.

6.2 IR Remote Control

The included IR remote control provides convenient wireless operation:

- Point the remote directly at the IR receiver on the front panel of the matrix switch.
- Use the numbered buttons to select inputs and outputs, similar to the front panel.
- Dedicated buttons for 'ALL', 'EDID', and menu navigation are also available on the remote.

6.3 Web GUI Control

The Web GUI offers a graphical interface for comprehensive control and configuration:

1. Ensure the matrix switch is connected to your network via the LAN port.
2. Install the 'MatrixController' software from the provided CD driver on a computer connected to the same network.
3. Open a web browser and enter the IP address of the matrix switch (refer to the software or device settings for the default IP).

4. The Web GUI will load, allowing you to manage input/output routing, EDID settings, and other system parameters.
5. **Note on Language:** Some users have reported that the Web GUI may default to Chinese upon access. Always ensure the language is set to English. Be cautious with buttons near the language selection, as some users have reported an 'OK' button in this area can trigger a factory reset without confirmation.



Image 6.2: Example of the Web GUI interface.

6.4 RS232 and LAN Port Control

For integration into professional control systems, the matrix switcher can be controlled via RS232 serial commands or network commands through the LAN port. Refer to the detailed command protocol provided in the 'MatrixController' software or contact MT-VIKI support for documentation.

6.5 Switching Configurations

The 8x8 matrix allows for various display configurations:

- **Independent Routing:** Each display can select a standalone input source.
- **Partial Sharing:** A group of displays can share the same input source while others show different content.
- **Full Sharing:** All displays can show the same input source simultaneously.

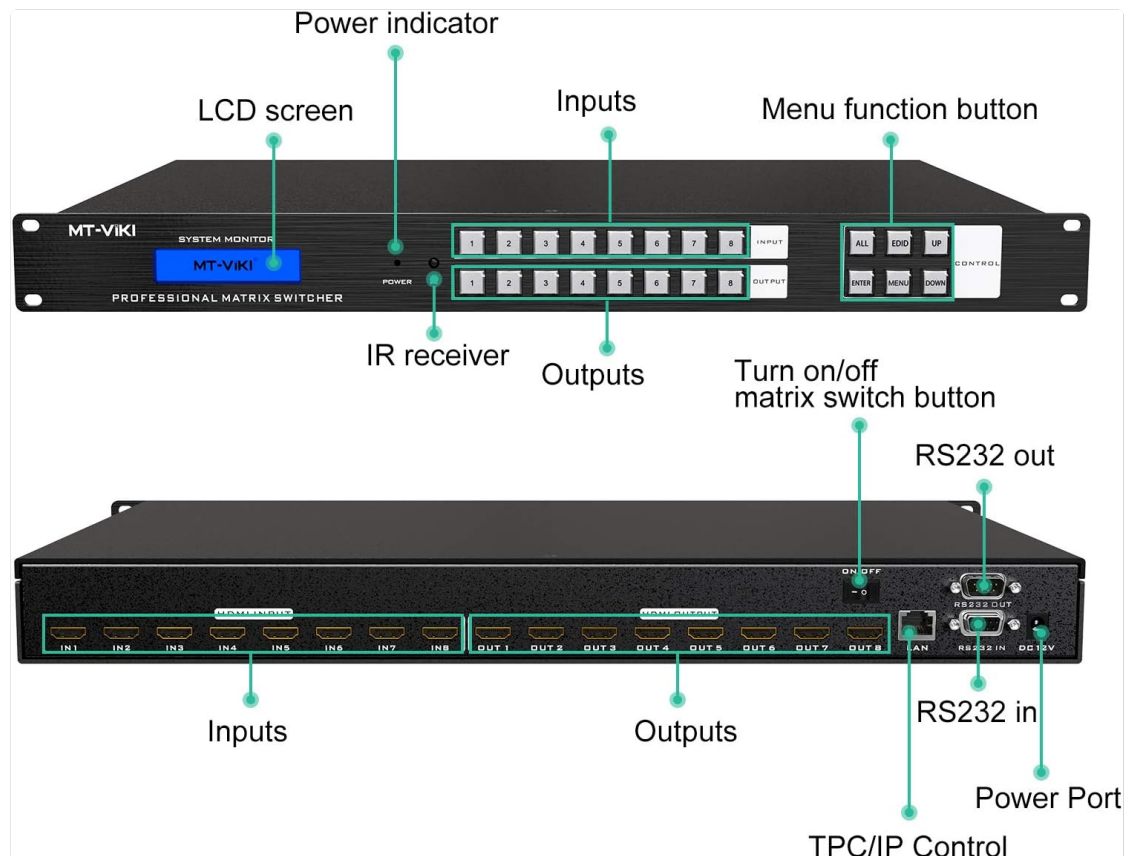


Image 6.3: Examples of various screen configurations.

7. SPECIFICATIONS

Feature	Description
Model Number	MT-HD0808-W
HDMI Inputs	8
HDMI Outputs	8
Max Resolution	4K@30Hz, 1080P@60Hz, 3D
HDCP Support	Yes
Audio Formats	PCM, Dolby AC3, DTS5.1, DTS7.1, DSD
Control Methods	Front Panel Buttons, IR Remote, RS232, LAN (Web GUI)
ESD Protection	8KV
Bandwidth	12.75G (US ADI Chip)
Power Supply	DC 12V
Dimensions	22 x 17.2 x 5.8 inches (Package)
Item Weight	8.88 pounds

8. TROUBLESHOOTING

If you encounter issues with your MT-VIKI HDMI Matrix Switch, refer to the following common problems and solutions:

- **No Signal or Display:**
 - Ensure all HDMI cables are securely connected to both the source and display devices, and to the matrix switch.
 - Verify that the matrix switch and all connected devices are powered on.
 - Check the selected input and output on the matrix switch to ensure correct routing.
 - Try adjusting the EDID settings. Sometimes, a manual EDID configuration can resolve compatibility issues.
 - Test with different HDMI cables or source/display devices to isolate the problem.
- **Control Issues (Remote/Front Panel):**
 - For IR remote control, ensure there are no obstructions between the remote and the IR receiver. Replace remote batteries if necessary.
 - For front panel buttons, ensure they are not stuck and respond to presses.
- **Web GUI Language Resets to Chinese:**
 - This is a known issue for some users. After selecting English (or your preferred language), be extremely cautious with any 'OK' or 'Apply' buttons nearby, as some have been reported to trigger a factory reset. There is currently no firmware update to make the device remember the last language used.
- **Device Power Cycling or Not Powering On:**
 - Ensure the power adapter is correctly connected and functioning.
 - Verify the power outlet is active.
 - If the issue persists, disconnect all HDMI cables and try powering on the unit. If it powers on normally, reconnect cables one by one to identify a potentially faulty cable or device.

9. MAINTENANCE

To ensure the longevity and optimal performance of your MT-VIKI HDMI Matrix Switch, follow these maintenance guidelines:





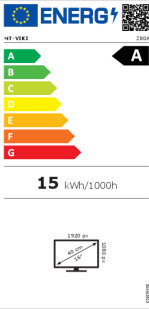

- **Cleaning:** Use a soft, dry cloth to clean the exterior of the unit. Do not use liquid or aerosol cleaners, as they may damage the finish or internal components.

- **Ventilation:** Ensure that the ventilation openings on the unit are not blocked. Proper airflow prevents overheating.
- **Storage:** If storing the unit for an extended period, disconnect it from power and store it in a cool, dry place away from direct sunlight and extreme temperatures.
- **Cable Management:** Periodically check HDMI and power cable connections to ensure they are secure and free from damage.

10. WARRANTY AND SUPPORT

MT-VIKI products are designed for reliability and performance. For warranty information, technical support, or service inquiries, please contact your authorized MT-VIKI dealer or visit the official MT-VIKI website. Please have your product model number (MT-HD0808-W) and purchase details ready when contacting support.

Related Documents - MT-HD0808-W

	<p>MT-HD0112 HDMI Video Wall Controller User Manual</p> <p>User manual for the MT-VIKI MT-HD0112 HDMI Video Wall Controller, detailing its features, connection diagrams, panel layout, product parameters, operations, and maintenance for 1080p@60Hz video wall splicing.</p>
	<p>MT-SW1601 16x1 HDMI Multi-Viewer User Manual</p> <p>User manual for the MT-SW1601 16x1 HDMI Multi-Viewer, detailing product introduction, features, interface, connection diagram, split modes, IR remote instructions, and applications.</p>
	<p>MT-VIKI MT-1708UL-IP / 1716UL-IP KVM Over IP Remote Access Console User Manual</p> <p>Comprehensive user manual for MT-VIKI's MT-1708UL-IP and 1716UL-IP KVM Over IP remote access consoles, detailing installation, configuration, operation, and specifications for rack-mount KVM solutions.</p>
	<p>MT-VIKI Product Brochure</p> <p>Product brochure for MT-VIKI, featuring information on products certified with ISO9001, 3C, CE, FCC, ROHS. Includes details on established ERP and training systems.</p>
	<p>MT-VIKI Z80A Energy Efficiency Label</p> <p>EU Energy Label details for the MT-VIKI Z80A monitor, including its energy efficiency rating (A), annual consumption (15 kWh/1000h), and screen specifications (1920x1080 resolution, 16-inch diagonal).</p>
	<p>MT-HD0112 HDMI Video Wall Controller User Manual</p> <p>User manual for the MT-VIKI MT-HD0112 HDMI Video Wall Controller, detailing its features, connection diagrams, panel layout, product parameters, operations, and maintenance for 1080p@60Hz video wall splicing.</p>