

Manuals+

[Q & A](#) | [Deep Search](#) | [Upload](#)

manuals.plus /

- › [AGM Global Vision](#) /
- › [AGM Global Vision Taipan Thermal Imaging Monocular 15-256 User Manual](#)

AGM Global Vision Taipan TM15-256

AGM Global Vision Taipan Thermal Imaging Monocular 15-256 User Manual

Model: Taipan TM15-256

[Overview](#) [Setup](#) [Operation](#) [Maintenance](#) [Troubleshooting](#) [Specifications](#) [Warranty](#)
[Support](#)

1. PRODUCT OVERVIEW

The AGM Global Vision Taipan Thermal Imaging Monocular 15-256 is a compact and versatile thermal observation device. It is designed for various applications requiring thermal detection and observation, such as outdoor activities, security, and general surveillance. This monocular integrates a high-sensitivity thermal detector with a 720 × 540 LCOS display, providing clear thermal imagery.

Key features include:

- 256×192 resolution, 12 μm, high sensitivity detector
- Adaptive AGC, DDE, 3D DNR image processing
- 720 × 540 LCOS display
- Up to 8 hours continuous running time (Wi-Fi hotspot off)
- "Auto Power Off" and "Sleep" modes for power management
- Wi-Fi hotspot for connectivity
- Type-C interface for charging and data transfer
- IP67 waterproof rating
- 8× Digital Zoom
- Video recording and image capture capabilities



Figure 1: The AGM Global Vision Taipan Thermal Imaging Monocular 15-256. This image displays the overall design of the monocular, highlighting its compact form factor and button layout.

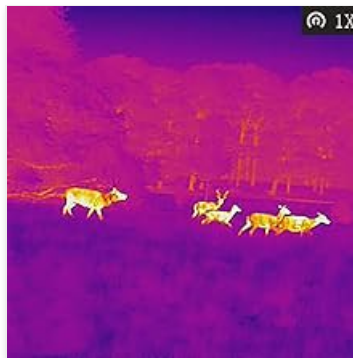


Figure 2: The AGM Taipan Monocular held in a user's hand, demonstrating its compact and portable design.

2. SETUP AND INITIAL USE

2.1 Unboxing and Inspection

Upon receiving your Taipan monocular, carefully open the packaging and inspect the contents. Ensure all components are present and undamaged. Typically, the package includes the monocular, a USB Type-C cable, and a user manual.

2.2 Charging the Battery

The monocular is equipped with a built-in rechargeable Lithium battery. Before first use, fully charge the device.

1. Locate the Type-C port on the monocular.
2. Connect the provided USB Type-C cable to the monocular and to a compatible USB power adapter (not

included) or a computer's USB port.

3. The charging indicator will show the charging status. Allow the device to charge until the indicator shows a full charge.

A full charge provides up to 8 hours of continuous operation with the Wi-Fi hotspot function off.

2.3 Powering On/Off

- To power on: Press and hold the power button (usually marked with a symbol) until the display activates.
- To power off: Press and hold the power button until the device shuts down.
- Sleep Mode: A short press of the power button may activate sleep mode to conserve battery. Press again to wake the device.



Figure 3: Front view of the AGM Taipan Monocular. This image shows the objective lens and the general shape of the device from the front.

RELIABILITY AND SIMPLICITY



Figure 4: Side view of the AGM Taipan Monocular. This image highlights the control buttons and the focus knob on the side of the device.

3. OPERATING INSTRUCTIONS

3.1 Adjusting the Display

The monocular features a 720 × 540 LCOS display. Adjustments for brightness and contrast typically apply to the thermal optic input, not the display's backlight itself. Refer to the on-screen menu for these settings.

3.2 Color Palettes

The Taipan monocular offers multiple color palettes to visualize thermal signatures. These typically include:

- **White Hot:** Hot objects appear white, colder objects appear black.
- **Black Hot:** Hot objects appear black, colder objects appear white.
- **Red Hot:** Hot objects are highlighted in shades of red.
- **Fusion:** Displays a spectrum of colors, often from cool (blue/purple) to hot (yellow/red).

Cycle through these palettes using the designated button on the device to find the most suitable view for your environment and target.

VIDEO RECORDING AND IMAGE CAPTURE

**8 GB
INTERNAL
STORAGE**

AGM Connect App:

- Live Video via WiFi Hotspot
- Recording and Capture
- Remote Control
- Photo Management
- Firmware Update
- Technical Support



Figure 5: Examples of the four color palettes available on the Taipan monocular. Each palette offers a different visual representation of thermal data.

3.3 Digital Zoom

The monocular features an 8× digital zoom function. This allows for closer observation of distant objects. Repeatedly press the zoom button to cycle through available magnification levels (e.g., 1x, 2x, 4x, 8x).



Figure 6: Demonstration of the 8x digital zoom capability. This image shows how the view changes with increasing magnification from 1x to 8x.

3.4 Video Recording and Image Capture

The device supports video recording and still image capture, storing data on its 8 GB internal storage.

- To record video: Press the video recording button (often marked with a camera icon or 'REC'). Press again to stop.
- To capture an image: Press the image capture button (often marked with a camera icon).

3.5 Wi-Fi Hotspot and AGM Connect App

The integrated Wi-Fi hotspot allows connection to a smartphone via the AGM Connect App. This enables live video streaming, remote control, photo management, firmware updates, and access to technical support.

1. Download the "AGM Connect" app from your smartphone's app store (Google Play or Apple App Store).
2. Activate the Wi-Fi hotspot on the monocular (refer to the device's menu for specific instructions).
3. Connect your smartphone to the monocular's Wi-Fi network.
4. Open the AGM Connect app to access features.



Figure 7: The AGM Connect App interface shown alongside the monocular. This illustrates the app's capabilities for live video, recording, and remote control.

4. MAINTENANCE

4.1 Cleaning

- **Lenses:** Use a soft, lint-free cloth specifically designed for optics. Gently wipe the lens surfaces. For stubborn smudges, use a small amount of lens cleaning solution. Avoid abrasive materials or excessive force.
- **Body:** Wipe the monocular's body with a soft, damp cloth. Do not use harsh chemicals or solvents.

4.2 Storage

Store the monocular in a cool, dry place away from direct sunlight and extreme temperatures. Ensure the lens cap is in place to protect the objective lens.

4.3 Water Resistance

The Taipan monocular has an IP67 waterproof rating, meaning it is protected from dust and can withstand immersion in water up to 1 meter for 30 minutes. While robust, avoid unnecessary exposure to water and ensure all port covers are securely closed when in wet conditions.

5. TROUBLESHOOTING

Problem	Possible Cause	Solution
---------	----------------	----------

Problem	Possible Cause	Solution
Device does not power on.	Low or depleted battery.	Charge the device fully using the provided Type-C cable.
Poor image quality or no thermal image.	Lens is dirty or obstructed. Incorrect palette selected. Device needs calibration.	Clean the objective lens. Cycle through color palettes. Perform a manual calibration if available in the menu.
Wi-Fi connection issues.	Wi-Fi hotspot not activated. Incorrect password. App not updated.	Ensure Wi-Fi hotspot is enabled on the monocular. Verify Wi-Fi password. Update the AGM Connect app to the latest version.
Device freezes or becomes unresponsive.	Temporary software glitch.	Perform a soft reset by holding the power button until the device restarts. If issues persist, check for firmware updates via the AGM Connect app.

6. SPECIFICATIONS

Brand	AGM Global Vision
Model Name	Taipan TM15-256
Detector Resolution	256×192, 12 μm
Display Resolution	720 × 540 LCOS
Magnification (Minimum)	1.5x
Magnification (Maximum)	12x (Digital Zoom)
Objective Lens Diameter	60.0 mm
Field Of View	15 Degrees
Color Palettes	White Hot, Black Hot, Red Hot, Fusion
Connectivity	Wi-Fi Hotspot, Type-C Interface
Storage	8 GB Internal
Battery Type	Built-in rechargeable Lithium battery
Operating Time	Up to 8 hours (Wi-Fi hotspot off)
IP Rating	IP67 (Waterproof)
Material	Polycarbonate
Item Weight	16 ounces
Compatible Devices	Smartphone
UPC	810027778406

7. WARRANTY INFORMATION

The AGM Global Vision Taipan Thermal Imaging Monocular 15-256 comes with a **5-Year Limited Warranty**. This warranty covers defects in materials and workmanship under normal use. For detailed terms and conditions, please refer to the official warranty documentation provided with your product or contact AGM Global Vision customer support.

8. SUPPORT AND CONTACT

For further assistance, technical support, or warranty claims, please contact AGM Global Vision directly. You can often find contact information on their official website or within the AGM Connect application.

- **Online Resources:** Visit the official AGM Global Vision website for FAQs, updated manuals, and software downloads.
- **AGM Connect App:** The app provides access to technical support features.