

VITCOCO Y8

VITCOCO Wireless Ear Cleaner Instruction Manual

Model: Y8

Introduction

Safety Information

Troubleshooting

Package Contents

Specifications

Setup

Operation

Warranty & Support

Maintenance

1. INTRODUCTION

Thank you for choosing the VITCOCO Wireless Ear Cleaner. This device is designed to provide a safe and effective way to inspect and clean your ear canal, featuring a high-definition camera and integrated LED lights for clear visualization. It offers a convenient solution for personal ear care and can also be used for inspecting other areas like the nose and skin.



Figure 1: VITCOCO Wireless Ear Cleaner and accessories.

2. SAFETY INFORMATION

- **Consult a Professional:** If you experience ear pain, discharge, hearing loss, or suspect an ear infection, consult a medical professional before using this device.
- **Gentle Use:** Always use the device gently. Avoid inserting it too deeply into the ear canal to prevent injury to the eardrum or ear canal.
- **Child Supervision:** Do not allow children under 10 years old to use this product unsupervised. Adult supervision is required for children and individuals who may not be able to use the device safely.
- **Cleanliness:** Ensure the ear picks and the camera lens are clean before each use to prevent the introduction of bacteria.
- **Temperature:** The device is designed to maintain a constant temperature to prevent discomfort. However, if you feel any excessive heat, discontinue use immediately.
- **Water Exposure:** While the ear pick tip is waterproof, the main body of the device is not. Avoid submerging the main

body in water.

3. PACKAGE CONTENTS

The VITCOCO Wireless Ear Cleaner package includes the following items:

- Otoscope product (main unit)
- Product packaging box
- Connection line (USB charging cable)
- Replaceable ear picks (various types, typically silicone)
- Instruction Manual



Figure 2: Included components of the VITCOCO Ear Cleaner kit.

4. SETUP GUIDE

4.1 Charging the Device

The ear wax removal tool comes with a built-in high-quality rechargeable battery. Before first use, ensure the device is fully charged. A single charge can provide up to 30 days of use.

- Connect the provided USB charging cable to the charging port on the device.
- Plug the other end of the USB cable into a compatible USB power adapter (not included) or a computer USB port.
- The indicator light on the device will show charging status (refer to manual for specific light indications).



Figure 3: Charging the VITCOCO Wireless Ear Cleaner.

4.2 App Download and Connection

This ear wax remover works well with all iPhone, iPad, and Android phones. The product requires a WiFi connection to use.

1. **Step 1: Download the App.** Scan the QR code provided in the manual or on the product packaging to download the "EndscopeTool" software from your device's app store (Google Play for Android, App Store for iPhone). You can also visit <http://download.wuyihang.com/app/download/#/>.
2. **Step 2: Power On.** Click the power button on the product. The LED light will turn on, indicating the device is ready for connection.
3. **Step 3: Connect to WiFi.** Go to your phone's WiFi settings and connect to the WiFi network named "softish-xxxx" (where xxxx is a unique identifier). This is a direct connection to the device, not your home WiFi.
4. **Step 4: Open App and Start.** Open the "EndscopeTool" app. It should automatically detect the connected device. Click the "Start" button to begin using the product and view the live feed from the camera.

4 Steps Connect Using

Product requires a WiFi connection to use

Step 1

Scan the QR code to download the “EndscopeTool” software



Step 2

Click the button to turn on the product, the LED light is turned



Step 3

Connect to WiFi named “softish-XXX”



Step 4

Click the “Start” button to start using the product



Figure 4: App connection steps for the VITCOCO Wireless Ear Cleaner.

4.3 Attaching Ear Picks

The device comes with replaceable ear picks made of soft silicone material. These are designed to be gentle and will not hurt your ear canal when used correctly.

- Select the desired ear pick from the provided accessories.
- Gently push the ear pick onto the tip of the device until it clicks securely into place. Ensure it is firmly attached to prevent it from detaching during use.
- The rotating-mounted ear spoon design ensures stability and safety during use.

360° Gyroscope & Stable Ear Scoops

You can control the product more stably and easily,
carefully observe earwax and clean it

360°
Omnidirectional

1sec
Rotary bayonet

1.5-2mm
Focal lengths

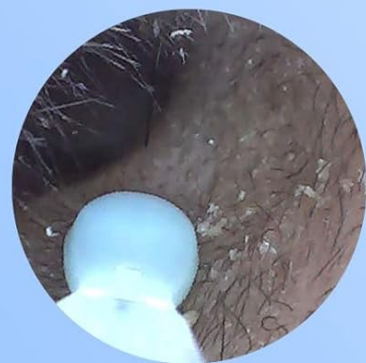
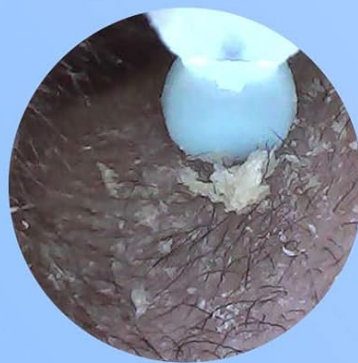


Figure 5: Attaching a silicone ear pick to the device.

5. OPERATING INSTRUCTIONS

5.1 Using the Ear Camera and Light

The device features a 360° wide-angle professional-grade lens and a 1296P FHD Camera, along with 6 built-in LED lights, to provide a clear and illuminated view inside your ear canal.

- Once connected to the app, the live feed from the camera will appear on your phone screen.
- Gently insert the ear pick tip into your ear canal. Observe the image on your phone to guide the device.
- The 6 LED lights will illuminate the canal, allowing you to see clearly even in dark areas.
- You can take pictures or record videos of the ear canal through the app interface.



Figure 6: High-definition camera and LED lighting for optimal viewing.

5.2 Ear Wax Removal

The device is designed to help you remove earwax more easily and safely. The slim stick and soft ear spoon are suitable for both adults and children.

- With the live view on your phone, carefully maneuver the ear pick to gently scoop out visible earwax.
- Avoid pushing earwax deeper into the canal. Use a gentle, sweeping motion to bring wax outwards.
- The built-in system controls the device at a constant temperature (20-25°C at the tip, 30-34°C at the handle) to prevent discomfort.

HD Stabilized Gyro Earwax Remover

It is more convenient to use with APP, which can improve the previous blind digging situation



Figure 7: Safe and effective earwax removal.

Your browser does not support the video tag.

Video 1: Demonstration of ear wax removal using the VITCOCO device.

Your browser does not support the video tag.

Video 2: Overview of the VITCOCO Ear Wax Removal Y8 model.

5.3 Other Applications

Beyond ear cleaning, this endoscope is convenient for daily inspection of the nose, mouth, throat, and other health conditions. It allows you to monitor the health of your family or even pets.



Another Function Endoscope

It can also be used to observe the nose and skin

Figure 8: Versatile use for nose and skin inspection.

6. MAINTENANCE

6.1 Cleaning the Device

The ear pick tip is IP67 waterproof, making it easy to clean. However, the main body of the device is not waterproof.

- After each use, remove the ear pick and rinse it under running water.
- Wipe the camera lens gently with a soft, dry cloth. Ensure the lens is facing down when cleaning to prevent water from entering the main body.
- Do not submerge the main body of the device in water or use harsh chemicals for cleaning.

IP67 Waterproof Level

Easy to clean, and also equipped with a variety of ear scoops that can be replaced



Note : When it is clean , the lens should be facing down

Figure 9: Cleaning the waterproof ear pick tip.

6.2 Replacing Ear Picks

Replace ear picks as needed to maintain hygiene and effectiveness. Extra ear picks are provided in the package.

- Gently pull the used ear pick off the device.
- Attach a new, clean ear pick as described in Section 4.3.

7. TROUBLESHOOTING

| Problem | Possible Cause | Solution |
|--------------------------|----------------|--------------------------|
| Device does not turn on. | Low battery. | Charge the device fully. |

| Problem | Possible Cause | Solution |
|-------------------------------|--|---|
| Cannot connect to WiFi. | Incorrect WiFi network selected; WiFi on device not activated. | Ensure you are connecting to the "softish-xxxx" network. Press the power button on the device to activate its WiFi. |
| Unclear image on app. | Dirty camera lens; insufficient lighting. | Clean the camera lens gently. Ensure the LED lights are on and providing adequate illumination. |
| Ear pick detaches during use. | Ear pick not securely attached. | Ensure the ear pick clicks firmly into place when attaching. |
| Device feels too warm. | Prolonged use; internal malfunction. | Discontinue use immediately. Allow the device to cool down. If problem persists, contact customer support. |

8. SPECIFICATIONS

- **Model Number:** Y8
- **Camera Resolution:** 1296P FHD
- **Lens Diameter:** 3.5mm
- **Field of View (FOV):** 70°-80°
- **Depth of Field (DOF):** 15-30mm
- **Lighting:** 6 LED Lights
- **Waterproof Rating (Tip):** IP67
- **Battery Life:** Up to 30 days on a single charge
- **Connectivity:** High-speed 2.4GHz WiFi
- **Image Transfer Rate:** 20fps
- **Compatibility:** iPhone, iPad, Android Phones
- **Dimensions:** 6.57 x 3.74 x 0.75 inches
- **Weight:** 0.71 ounces
- **Manufacturer:** VITCOCO

1296 FHD Camera

1296P camera & 3.5mm lens with gyroscope to help you better clean your ears



Figure 10: Detailed view of the 1296P FHD Camera components.

High-speed High-tech WiFi

Equipped with a light WiFi
chip high-speed

2.40GHZ
Frequency

20fps
Image Transfer Rate

100%
Connection Success rate

Figure 11: High-speed WiFi chip for clear and stable image transmission.






9. WARRANTY & SUPPORT

VITCOCO is committed to providing high-quality products. For any issues or inquiries regarding your Wireless Ear Cleaner, please contact our customer support team. Please refer to the product packaging or the official VITCOCO store for specific warranty details and contact information.

Legal Disclaimer: Statements regarding dietary supplements have not been evaluated by the FDA and are not intended to diagnose, treat, cure, or prevent any disease or health condition. This product is intended for personal hygiene and inspection purposes only.

Visit the official VITCOCO Store: [VITCOCO Store on Amazon](#)

Related Documents - Y8

| | |
|---|---|
|  | <p>VITCOCO S3 Intelligent Visual Ear Picker User Manual and Guide</p> <p>Comprehensive user manual for the VITCOCO S3 Intelligent Visual Ear Picker (Otoscope). Learn how to set up the Endscope Tool app, connect via Wi-Fi, use the device features, and troubleshoot common issues. Includes product specifications, precautions, and contact information.</p> |
|  | <p>ACRSYNC Wireless CarPlay and Android Auto Adapter User Manual</p> <p>User manual for the ACRSYNC wireless adapter, enabling Apple CarPlay and Android Auto functionality in compatible vehicles. Includes setup instructions, specifications, troubleshooting, and compliance information.</p> |
|  | <p>ACRSYNC Wireless CarPlay and Android Auto Adapter User Manual and Declaration</p> <p>Comprehensive user manual and EU Declaration of Conformity for the ACRSNC wireless CarPlay and Android Auto adapter (Model Y8) by Shenzhen Elebest Technology. Includes setup, troubleshooting, and compatibility information.</p> |
|  | <p>ACRSYNC Wireless CarPlay and Android Auto Adapter User Manual</p> <p>Comprehensive user manual for the ACRSYNC wireless adapter, detailing setup, compatibility, troubleshooting, and specifications for seamless integration of Apple CarPlay and Android Auto into your vehicle.</p> |
|  | <p>ACRSYNC Wireless CarPlay & Android Auto Adapter User Manual and EU Declaration of Conformity</p> <p>This document provides a comprehensive user manual for the ACRSYNC Wireless CarPlay & Android Auto adapter (Model Y8), including setup instructions, compatibility checks, troubleshooting tips, and the official EU Declaration of Conformity from Shenzhen Elebest Technology (HK) Co., LTD.</p> |