

LUXRITE LR23785-16

LUXRITE 4-Inch Square Recessed LED Can Lights User Manual

Model: LR23785-16

INTRODUCTION

This manual provides detailed instructions for the safe installation, operation, and maintenance of your LUXRITE 4-Inch Square Recessed LED Can Lights, Model LR23785-16. These lights feature CCT (Correlated Color Temperature) selection, dimmable functionality, and are suitable for both indoor and outdoor wet locations. Please read this manual thoroughly before installation and retain it for future reference.

SAFETY INFORMATION

- **WARNING:** Risk of electric shock. Disconnect power at the fuse or circuit breaker before installation or servicing.
- Installation must be performed by a qualified electrician in accordance with all national and local electrical codes.
- Do not modify or alter the fixture. Any modifications may void the warranty and create safety hazards.
- Ensure the supply voltage is compatible with the fixture (120V).
- Do not handle the fixture with wet hands or when standing on wet or damp surfaces.
- This product is designed for recessed installation into existing 4-inch can housings.

PACKAGE CONTENTS

Verify that all components are present before beginning installation:

- LUXRITE 4-Inch Square Recessed LED Can Light Fixture
- E26 Base Adapter
- Instruction Manual (this document)

SETUP AND INSTALLATION

Follow these steps for proper installation of your recessed LED lights:

1. **Turn Off Power:** Before starting any electrical work, ensure the power supply to the installation area is

turned off at the circuit breaker or fuse box.

2. **Prepare Existing Housing:** If replacing an old fixture, carefully remove it from the recessed housing. Ensure the housing is clean and free of debris.
3. **Insert E26 Base Adapter:** Screw the provided E26 base adapter into the existing E26 socket within the recessed housing.
4. **Connect Fixture:** Connect the quick-connect plug from the LED fixture to the quick-connect receptacle on the E26 base adapter. Ensure a secure connection.
5. **Select Color Temperature (CCT):** Locate the CCT selection switch on the back of the LED fixture. Before pushing the fixture into the ceiling, select your desired color temperature: 2700K (Warm White), 3000K (Soft White), 3500K (Natural White), 4000K (Cool White), or 5000K (Bright White).
6. **Install Fixture:** Gently push the LED fixture into the recessed housing until the metal tabs securely hold it flush against the ceiling. Ensure no wires are pinched.
7. **Restore Power:** Once the fixture is securely installed, restore power at the circuit breaker.

EASY INSTALLATION

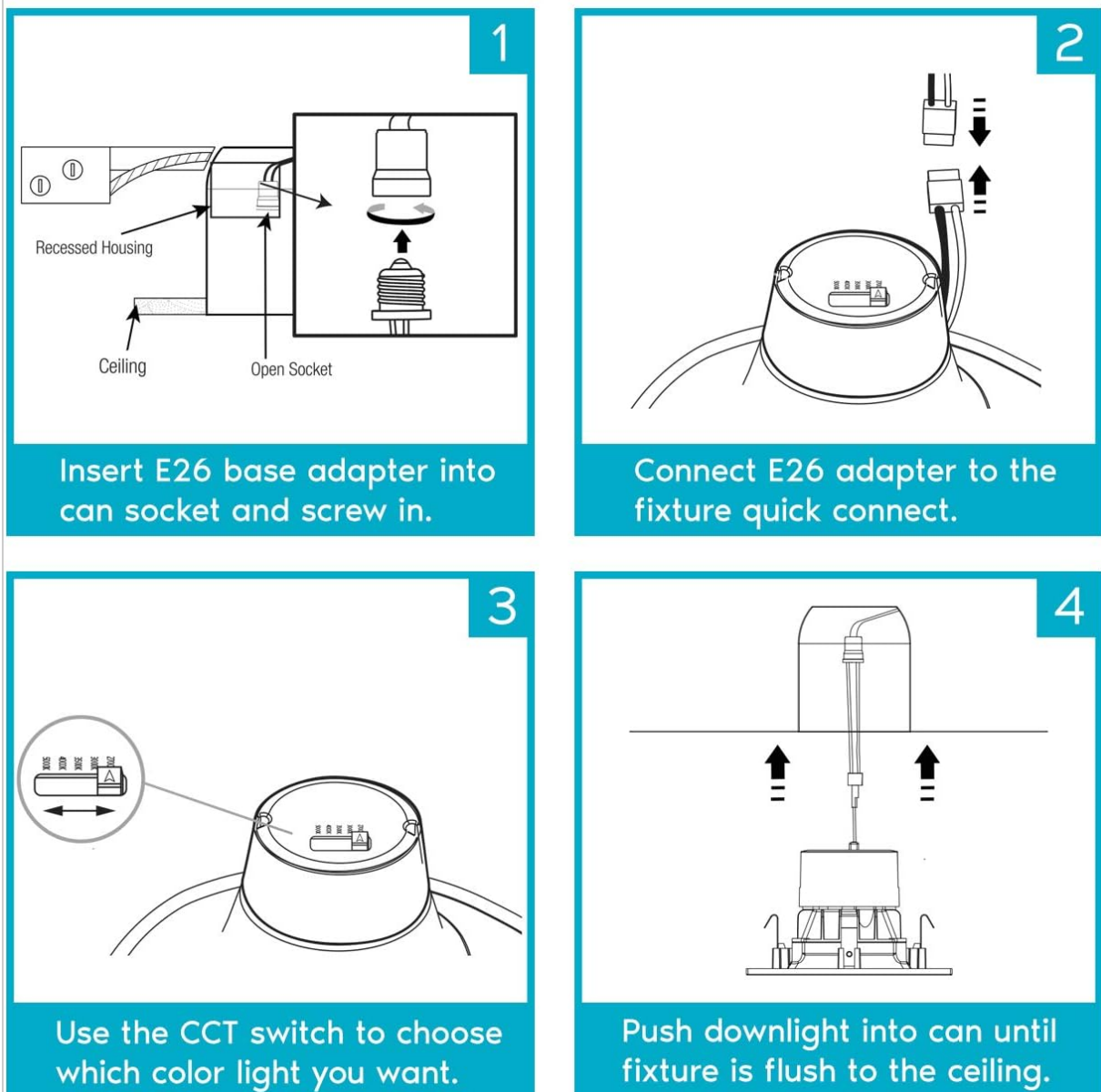


Figure 1: Easy Installation Steps

This diagram illustrates the four-step process for installing the LUXRITE 4-inch square recessed LED light, from connecting the E26 adapter to selecting the color temperature and securing the fixture.



5 Color Options

2700K / 3000K / 3500K / 4000K / 5000K

Decorate your space with the perfect lighting solution that offers 5 color temperatures to choose from.

Figure 2: CCT Selection Switch

A detailed view of the switch located on the back of the fixture, allowing users to select from five different color temperatures before installation.

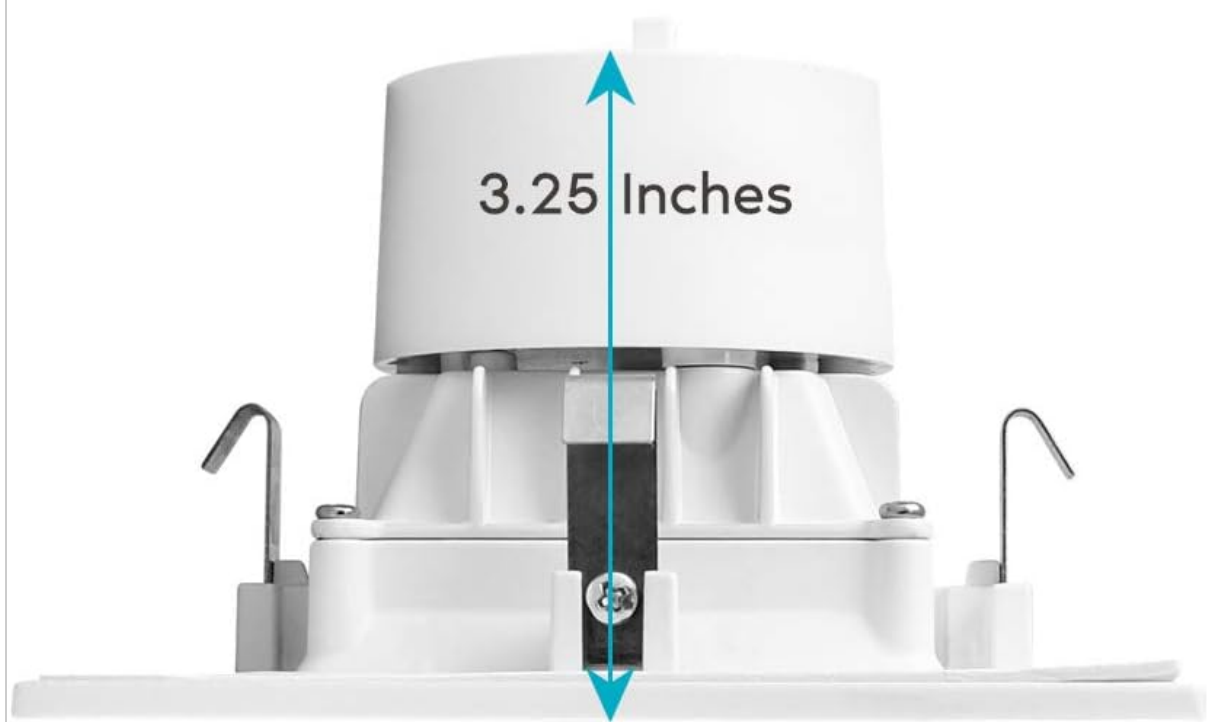
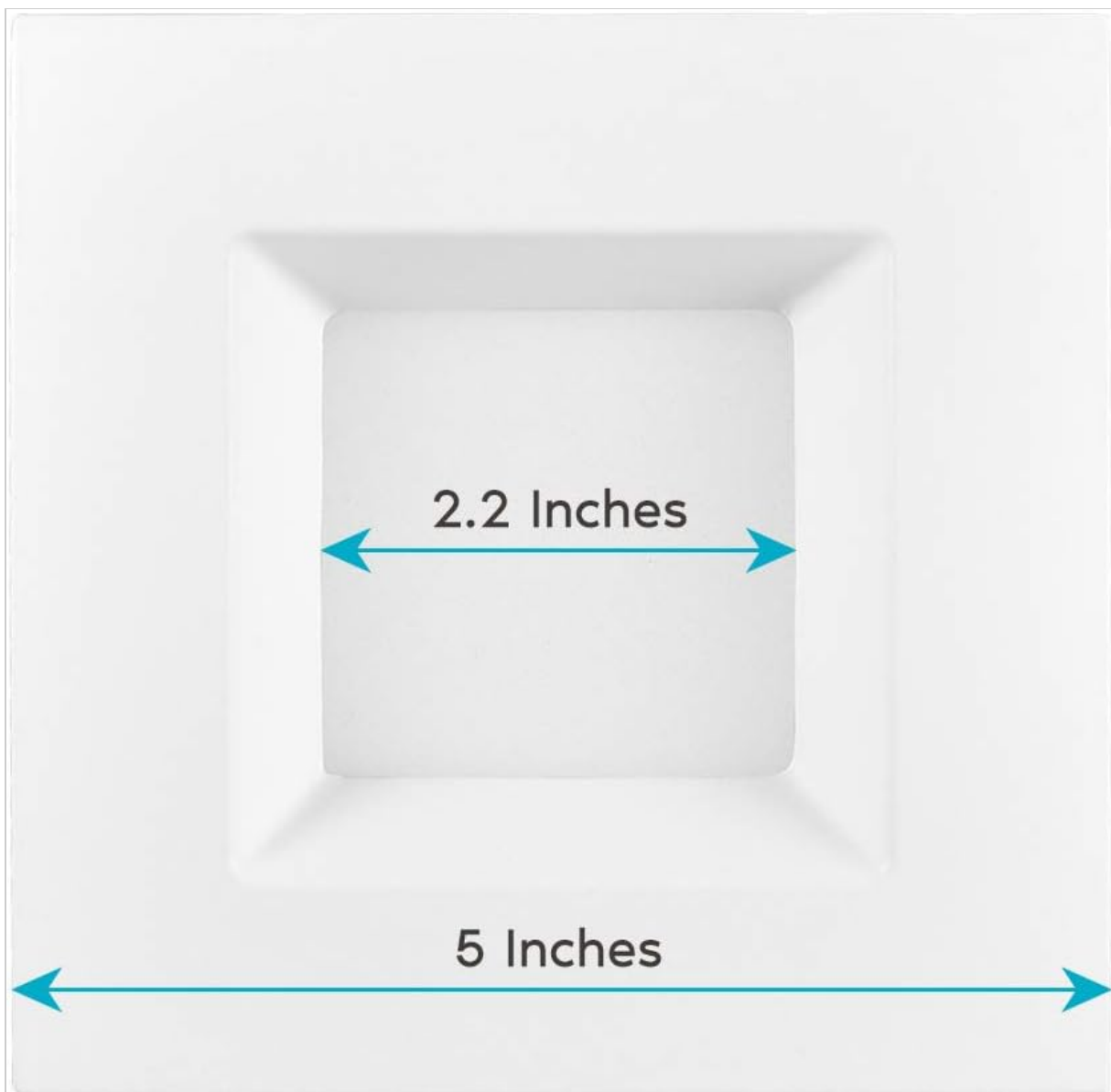


Figure 3: Product Dimensions

This image provides key measurements for the recessed light, indicating a 5-inch square face and a 3.25-inch depth for proper fitment.

Your browser does not support the video tag.

Video 1: LUXRITE Recessed LED Can Light Overview

This video provides a general overview of the LUXRITE recessed LED can light, highlighting its features and benefits, which can be helpful for understanding the product before installation.

OPERATING INSTRUCTIONS

Your LUXRITE recessed LED lights are designed for ease of use and versatility.

Color Temperature Selection (CCT)

The CCT switch on the back of each fixture allows you to choose from five distinct color temperatures:

- **2700K:** Warm White, ideal for cozy and inviting spaces.
- **3000K:** Soft White, a slightly brighter warm tone, suitable for living areas.
- **3500K:** Natural White, a balanced white light, good for general illumination.
- **4000K:** Cool White, a crisp, clean white light, often used in kitchens or offices.
- **5000K:** Bright White (Daylight), a very bright, bluish-white light, excellent for task lighting.

Note: The CCT must be selected before the fixture is fully installed into the ceiling.

Dimming Functionality

These LED lights are fully dimmable, allowing you to adjust the light output from 100% down to 10%. For optimal performance, use with compatible LED dimmers. Refer to the dimmer compatibility list below for recommended models.

AMBIANCE | Choose various colors throughout your home for different atmospheres

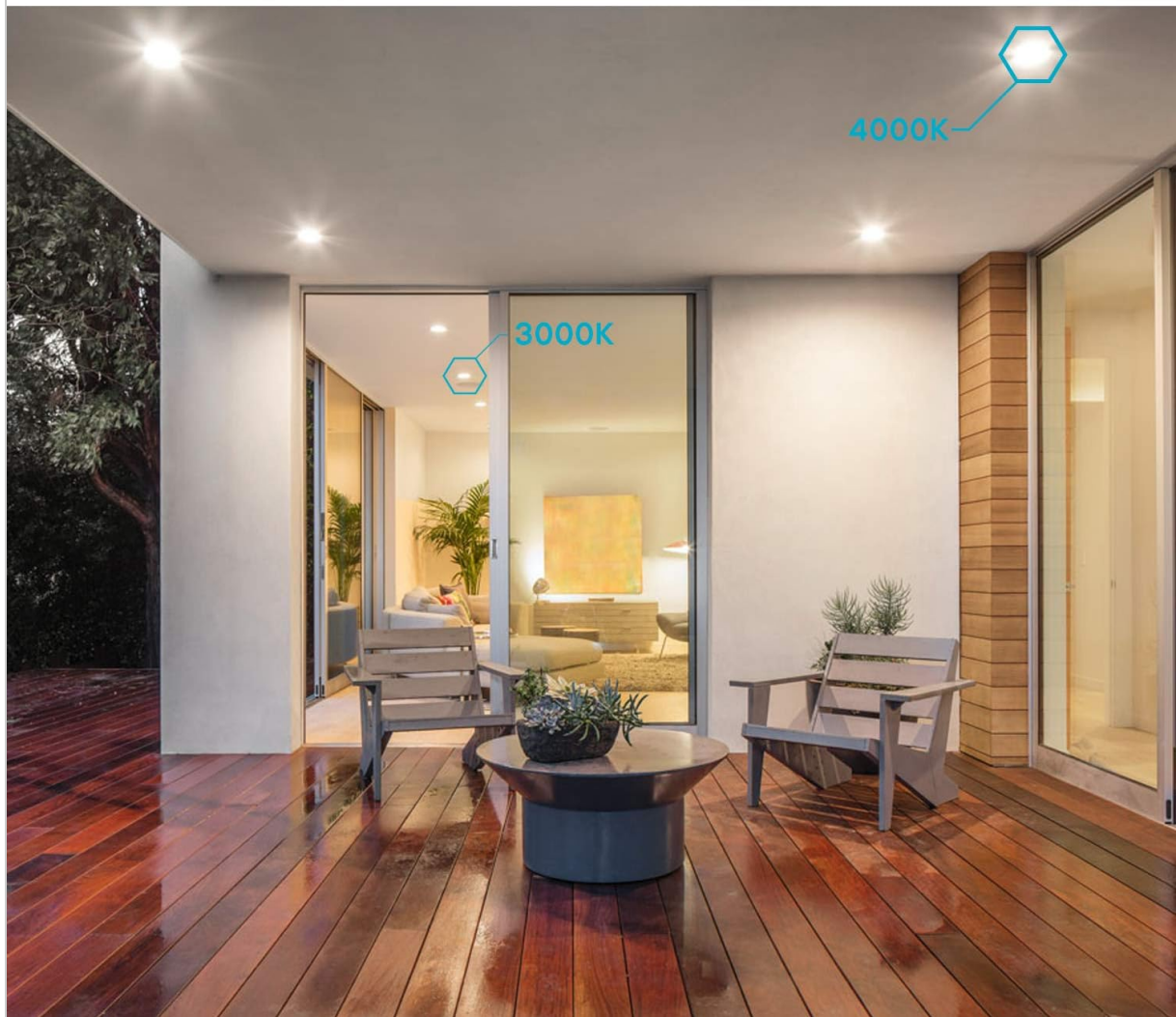


Figure 4: Ambiance with Different CCTs

This image illustrates how different color temperatures (3000K and 4000K) can create varied ambiances in a space, showcasing the versatility of the CCT selectable feature.

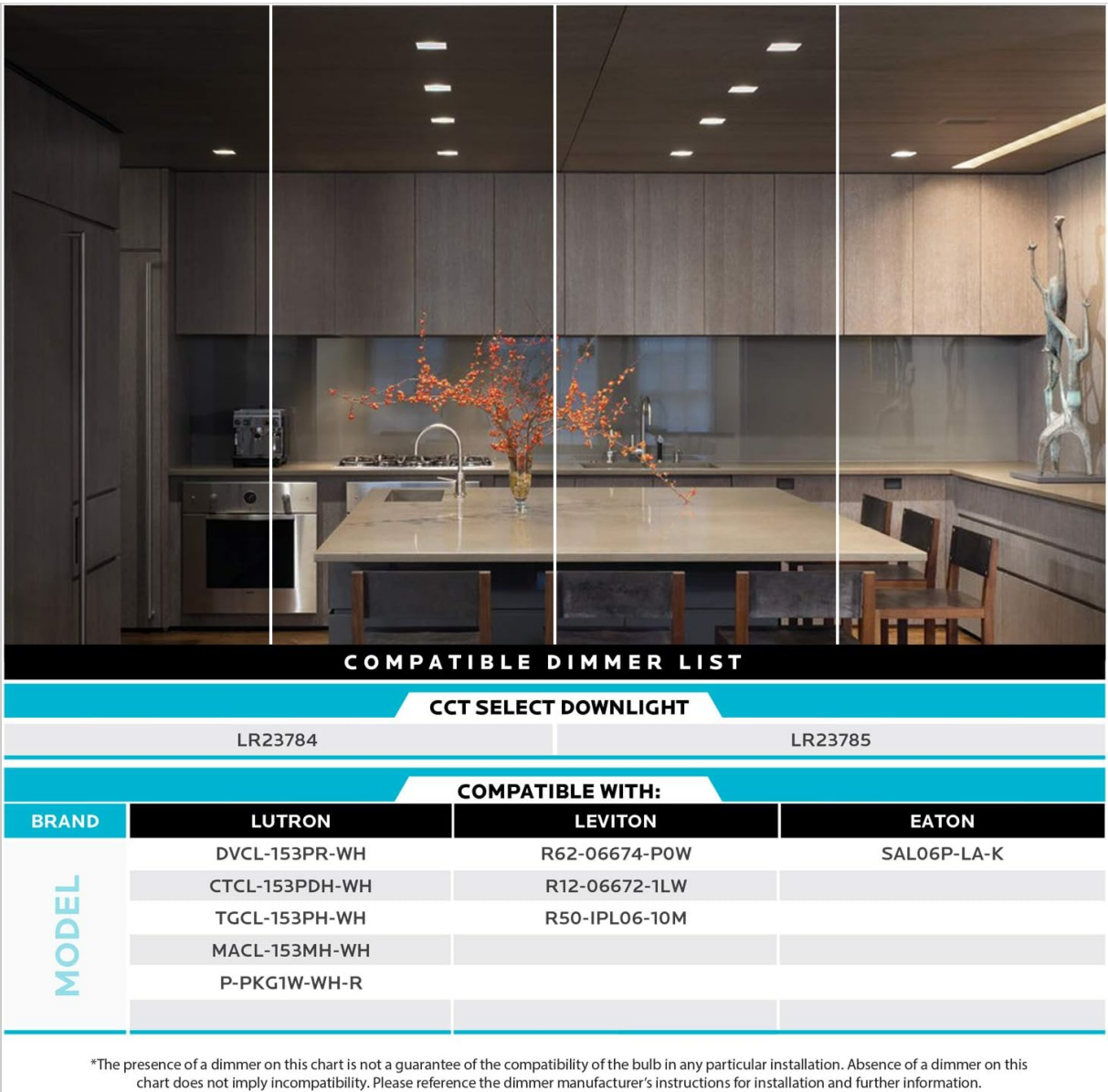


Figure 5: Compatible Dimmer List

A table detailing various dimmer models from leading brands (Lutron, Leviton, Eaton) that are compatible with LUXRITE recessed LED lights, ensuring smooth dimming performance.

MAINTENANCE

The LUXRITE LED recessed lights are designed for long-term, maintenance-free operation.

- **Cleaning:** To clean the fixture, ensure power is off. Use a soft, dry, or slightly damp cloth. Avoid abrasive cleaners, solvents, or harsh chemicals, as these can damage the finish or electrical components.
- **No Bulb Replacement:** As an integrated LED fixture, there are no bulbs to replace. The LEDs are designed to last for the entire lifespan of the product.

TROUBLESHOOTING

If you encounter issues with your LUXRITE recessed LED lights, refer to the following common problems and solutions:

Problem	Possible Cause	Solution
---------	----------------	----------

Problem	Possible Cause	Solution
Light does not turn on.	No power, loose connection, faulty fixture.	Check circuit breaker. Ensure E26 adapter and quick-connect are secure. If problem persists, contact support.
Light flickers or dims inconsistently.	Incompatible dimmer, loose wiring, power fluctuations.	Ensure dimmer is LED compatible (refer to Figure 5). Check wiring connections. Consult an electrician if power fluctuations are suspected.
Incorrect color temperature.	CCT switch set incorrectly.	Carefully remove fixture and adjust the CCT switch on the back to the desired setting (refer to Figure 2).
Light is not flush with ceiling.	Improper installation of metal tabs.	Gently re-adjust the fixture within the housing, ensuring the metal tabs engage properly to hold it flush.

SPECIFICATIONS

Key technical specifications for the LUXRITE 4-Inch Square Recessed LED Can Light:

- **Model:** LR23785-16
- **Size:** 4 Inch Square
- **Wattage:** 11 Watts
- **Brightness:** 750 Lumens
- **Color Temperature (CCT):** Selectable 2700K, 3000K, 3500K, 4000K, 5000K
- **Voltage:** 120 Volts
- **Color Rendering Index (CRI):** 90
- **Average Life:** 50,000 Hours
- **Installation Type:** Flush Mount, Recessed
- **Indoor/Outdoor Usage:** Indoor, Outdoor (Wet Rated)
- **Certifications:** Energy Star, ETL Listed, Wet Location Rated
- **Material:** Metal
- **Product Dimensions:** 5 x 3.25 x 5 inches
- **Item Weight:** 13.62 pounds (for 16-pack)

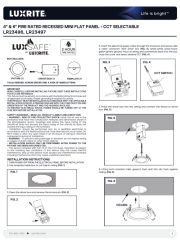


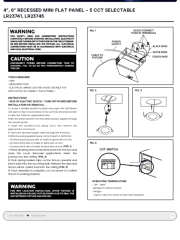
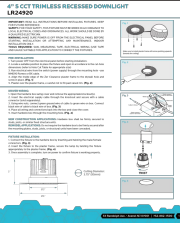
WARRANTY INFORMATION

LUXRITE products are manufactured to high-quality standards and are backed by a manufacturer's warranty. The LED components in this fixture are rated for an average life of 50,000 hours, which translates to approximately 45 years of typical use. For specific warranty terms and conditions, please refer to the documentation included with your purchase or contact LUXRITE customer support.

SUPPORT

If you require further assistance, have questions not covered in this manual, or need to report a problem, please contact LUXRITE customer support. You can typically find contact information on the product packaging or on the official LUXRITE website.

Related Documents - LR23785-16

	<p>Luxrite 4" & 6" Fire Rated Recessed Mini Flat Panel Light - CCT Selectable Installation Guide</p> <p>Installation guide for the Luxrite LR23496 and LR23497 4-inch and 6-inch fire-rated recessed mini flat panel lights. Learn how to safely install your CCT selectable fixture.</p>
	<p>Luxrite LED Lay-In Backlit Flat Panel: 5CCT & Wattage Selectable</p> <p>Explore the Luxrite LED Lay-In Backlit Flat Panel series, featuring 5CCT color temperature and wattage selectability. Available in 1x4', 2x2', and 2x4' sizes, these sensor-ready fixtures offer energy efficiency, dimmability, and are IC rated for damp locations, backed by a 5-year warranty.</p>
	<p>Luxrite 3", 4", & 6" Recessed Mini Flat Panel Trim Installation Guide</p> <p>Comprehensive installation guide for Luxrite's 3, 4, and 6-inch recessed mini flat panel step baffled LED trims with 3 CCT selectable options (LR23738, LR23739, LR23740). Includes safety warnings, tools required, step-by-step instructions, and product specifications.</p>
	<p>Luxrite 4" & 6" Recessed Mini Flat Panel - 5 CCT Selectable Installation Guide</p> <p>Comprehensive installation guide for Luxrite 4-inch and 6-inch Recessed Mini Flat Panel LED lights (LR23741, LR23745). Covers safety warnings, required tools, step-by-step installation procedures, and product specifications including CCT selection and operating conditions.</p>
	<p>Luxrite LR24920 4-Inch 5 CCT Trimless Recessed Downlight Installation Guide</p> <p>Comprehensive installation guide for the Luxrite LR24920 4-inch 5 CCT trimless recessed LED downlight. Provides detailed steps for pre-installation, driver wiring, and fixture mounting, along with safety precautions and dimensions.</p>

